

# Council Tax Guide 2018/19

## Welcome to your Council Tax guide

This brief guide will explain how your Council Tax helps to pay for the services Fareham Borough Council provides across the Borough.

## Fareham's part of the Council Tax increases

Over seven of the last nine years we have been able to freeze Fareham's part of Council Tax by running our services more efficiently and by using careful financial management.

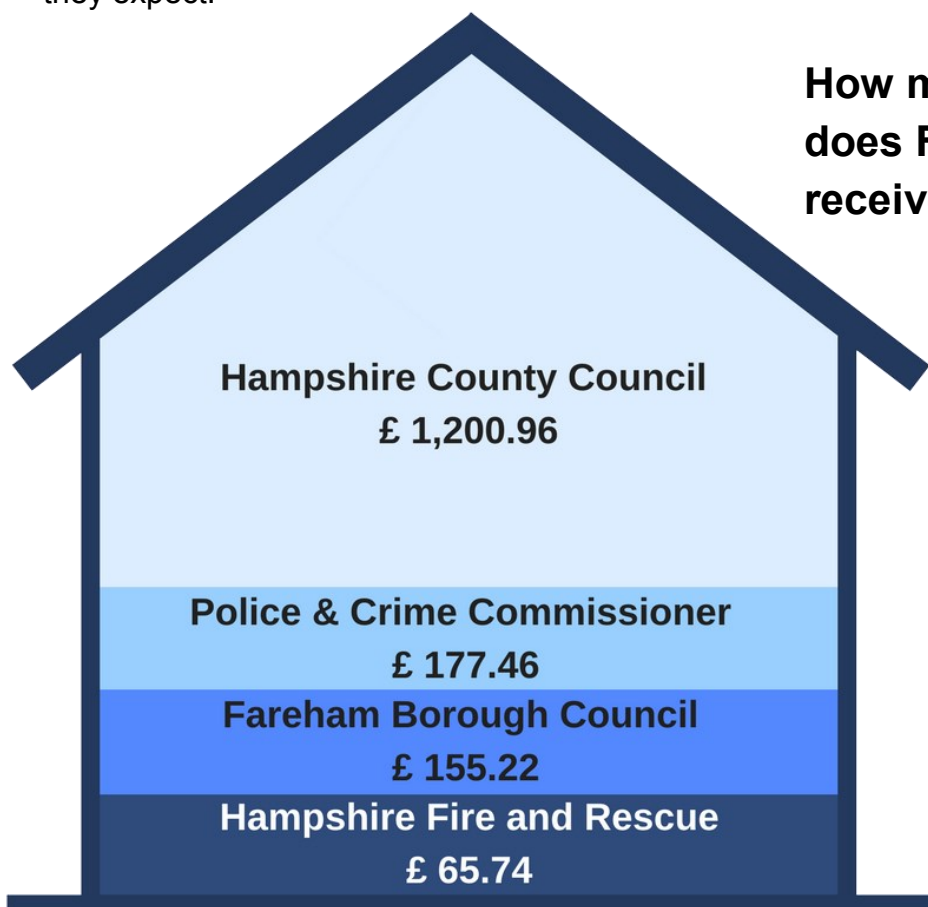
Despite these efficiencies our finances are getting tighter and, this year, our funding has been reduced by another £300,000 which is around 14% of the funding we receive from Central Government. This means that we have to find ways to ensure that we can continue to provide residents with the high level of service they expect.

The Government's expectation is that we increase Council Tax by £5 which is the same increase as last year. Despite this increase we still have one of the lowest rates of Council Tax in the country.

## How much of my Council Tax goes to Fareham Borough Council?

For adult social care authorities, Council Tax bills show two percentage changes: one for the part of the overall change attributable to the adult social care precept and one for the part attributable to general expenditure. Hampshire County Council provides adult social care in Hampshire and this is reflected in an increase of 3% for that part of your bill.

## How much of my Council Tax does Fareham Borough Council receive?



**Council Tax for a Band D property (the mid Band) in 2018/19 will be £1,599.38**

## How do we calculate the Council Tax in Fareham?

We produce a Finance Strategy each year. This helps us make spending, borrowing and investment decisions over the next 5 years.

The Council has £6.1 million revenue reserves (money saved to invest in the future), funds balances of £4.6 million and capital reserves of £11.1 million. These are used to pay for new projects and services, meet any unforeseen costs and to smooth the effect of other financial pressures and changes in Government funding on Council Tax.

However, the Council's funds remain tight this year and are likely to be so for the foreseeable future because of economic pressures and Government cuts.



The table below shows the changes to the Council's budget for 2018/19 and how we calculate your Council Tax.

COUNCIL TAX SUMMARY 2018/19			Amount per Band
2017/18		2018/19	D Property
£'000		£'000	£
8,617	Net Expenditure	8,441	198.12
	Less Income:		
-288	Revenue Support Grant	0	0.00
-90	Use of Collection Fund Balances	25	0.59
-1,800	Retained Business Rates	-1,853	-43.49
-74	Transitional Grant	0	0.00
<b>6,365</b>	<b>Fareham Borough Council Total</b>	<b>6,613</b>	<b>155.22</b>
Add:	Hampshire County Council Precept		1,200.96
	Hampshire Fire and Rescue Authority Precept		65.74
	Police and Crime Commissioner Precept		177.46
	<b>TOTAL</b>		<b>£1,599.38</b>

## Good at collecting Council Tax

Fareham Borough Council maintains excellent collection rates for Council Tax. We collected 99% of the Council Tax due in 2016/17, this compares excellently with other authorities both in Hampshire and nationally.



## Making sure your Council Tax is well spent

Part of your Council Tax funds services provided by Fareham Borough Council such as waste collection and kerbside recycling, street cleaning, housing and community and leisure services.

The table below shows how we spend your money to provide services in Fareham.

REVENUE BUDGET SUMMARY	Budget	Budget	Change between
	2017/18	2018/19	2017/18 & 2018/19
	£	£	£
<b>Service Budgets</b>			
Planning Committee	622,100	565,100	-57,000
Licensing & Regulatory Affairs Committee	481,000	501,500	20,500
<b>Executive - Service Budgets</b>			
- Leisure & Community	2,543,800	2,378,000	-165,800
- Housing	1,024,400	1,082,500	58,100
- Planning & Development	121,600	170,200	48,600
- Policy & Resources	123,900	-908,800	-1,032,700
- Health & Public Protection	2,226,100	2,207,600	-18,500
- Street scene	4,657,800	4,773,300	115,500
<b>Total Service Expenditure</b>	<b>11,800,700</b>	<b>10,769,400</b>	<b>-1,031,300</b>
Other Budgets	-3,184,000	-2,328,900	855,100
<b>NET EXPENDITURE</b>	<b>8,616,700</b>	<b>8,440,500</b>	<b>-176,200</b>

## What is my Council Tax spent on?

The chart below shows you how much of your £155.22 (Band D) is spent on the different services we provide to our residents.

How your £155.22 is spent	
EMPTYING YOUR BINS	24.10
MANAGING GROWTH	14.32
REMOVING LITTER	13.08
CONTROLLING PROPERTY DEVELOPMENT	9.53
AFFORDABLE HOUSING	11.96
GOOD QUALITY GREEN SPACES	9.48
WELL MAINTAINED SPORTS PITCHES	8.55
GIVING LOCAL PEOPLE A VOICE	7.98
MOWING THE GRASS	6.39
ENTERTAINMENT AT FERNEHAM HALL	6.19
PROTECTING YOUR HEALTH	5.84
A POPULAR LEISURE CENTRE	3.36
SUPPORTING THOSE ON LOWER INCOMES	4.50
HELPING YOU FEEL SAFE AND SECURE	4.02
KEEPING YOU INFORMED	4.05
GRANTS	3.87
PUBLIC CONVENIENCES	3.18
LOCAL COMMUNITY FACILITIES	3.24
HELPING WITH TRAFFIC MANAGEMENT	1.45
HOME IMPROVEMENTS	0.50
CONSERVATION	2.51
HELPING WITH BEREAVEMENT ARRANGMENTS	1.30
PROTECTING THE COAST	1.39
CREATING A VIBRANT TOWN CENTRE	0.94
PEST CONTROL	0.84
A LOCAL MUSEUM	0.00
A RANGE OF LOCAL JOB OPPORTUNITIES	0.72
PLANNING FOR EMERGENCIES	0.69
PLAY AREAS	0.67
HELPING YOU TRAVEL AROUND THE BOROUGH	0.57
LICENSING	0.00
HELPING WITH YOUR PROPERTY MOVES	0.00
PLACES TO PARK YOUR CAR	0.00
TOTAL TO BE MET BY FAREHAM COUNCIL TAX PAYERS	£155.22

## **Council Tax Support**

If you have made a claim for Council Tax Support, your Council Tax bill and enclosed Decision Letter will tell how much support you are entitled. Please contact us to find out more about the Council Tax Support scheme and how to apply.

### **Contact us**

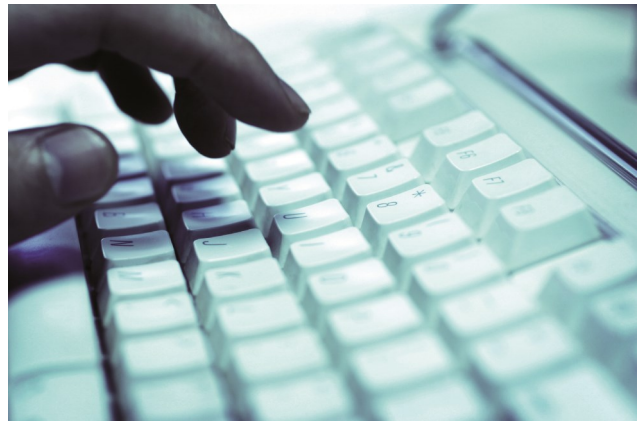
For more information regarding Council Tax please see the back of your Council Tax Bill or visit our website. Alternatively you can contact us at the Civic Offices and we will be happy to help you.

Tel: (01329) 824651

Email: [counciltax@fareham.gov.uk](mailto:counciltax@fareham.gov.uk)

Web: [www.fareham.gov.uk](http://www.fareham.gov.uk)

Civic Offices, Civic Way, Fareham, PO16 7AZ



### **How is the rest of my Council Tax spent?**

Further details on the spending plans of Hampshire County Council, Hampshire Police and Crime Commissioner and Hampshire Fire & Rescue Authority can be found at the following websites:

#### **Hampshire County Council**

[www.hants.gov.uk/counciltax](http://www.hants.gov.uk/counciltax)

<https://www.hants.gov.uk/aboutthecouncil/budgetspendingandperformance>

#### **Hampshire Police and Crime Commissioner**

<https://www.hampshire-pcc.gov.uk/transparency/council-tax>

#### **Hampshire Fire & Rescue Authority**

[www.hantsfire.gov.uk/how-we-are-performing/our-performance/council-tax-information/](http://www.hantsfire.gov.uk/how-we-are-performing/our-performance/council-tax-information/)