

# Council Tax Guide 2019/20

## Welcome to your Council Tax guide

This brief guide will explain how your Council Tax helps to pay for the services Fareham Borough Council provides across the Borough.

## Fareham's part of the Council Tax increases

Over seven of the last ten years we have been able to freeze Fareham's part of Council Tax by running our services more efficiently and by using careful financial management.

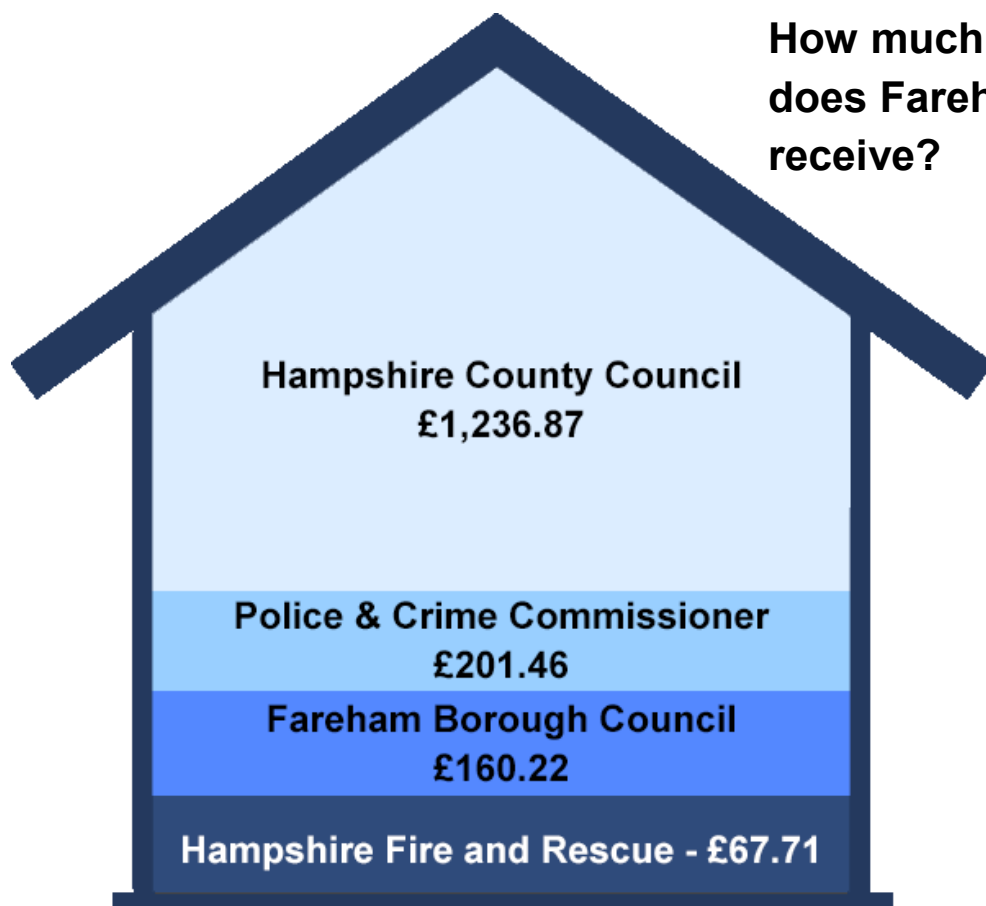
Despite these efficiencies, Central Government have made further reductions to our funding, reducing the New Homes Bonus by £150,000. This means that we have to find ways to ensure that we can continue to provide residents with the high level of service they expect.

The Government's expectation is that we increase Council Tax by £5 which is the same increase as last year. Despite this increase we still have one of the lowest rates of Council Tax in the country.

## How much of my Council Tax goes to Fareham Borough Council?

Only 10% of the Council Tax you pay goes towards services provided by Fareham Borough Council. Fareham's Band D charge of £160.22 is still one of the lowest Council Tax charges in the country.

## How much of my Council Tax does Fareham Borough Council receive?



Council Tax for a Band D property (the mid Band) in 2019/20 will be £1,666.26

## How do we calculate the Council Tax in Fareham?

We produce a Finance Strategy each year. This helps us make spending, borrowing and investment decisions over the next 5 years.

The Council has £6.1 million revenue reserves (money saved to invest in the future), funds balances of £4.4 million and capital reserves of £11.5 million. These are used to pay for new projects and services, meet any unforeseen costs and to smooth the effect of other financial pressures and changes in Government funding on Council Tax.

However, the Council's funds remain tight this year and are likely to be so for the foreseeable future because of economic pressures and Government cuts.



The table below shows the changes to the Council's budget for 2019/20 and how we calculate your Council Tax.

COUNCIL TAX SUMMARY 2019/20		Amount per Band	
2018/19		2019/20	D Property
£'000		£'000	£
8,441	Net Expenditure	8,666	201.96
	Less Income:		
0	Revenue Support Grant	0	0.00
26	Use of Collection Fund Balances	107	2.49
-1,853	Retained Business Rates	-1,898	-44.23
0	Transitional Grant	0	0.00
<b>6,613</b>	<b>Fareham Borough Council Total</b>	<b>6,876</b>	<b>160.22</b>
Add:	Hampshire County Council Precept		1,236.87
	Hampshire Fire and Rescue Authority Precept		67.71
	Police and Crime Commissioner Precept		201.46
	<b>TOTAL</b>		<b>£1,666.26</b>

## Good at collecting Council Tax

Fareham Borough Council maintains excellent collection rates for Council Tax. We collected 99.1% of the Council Tax due in 2017/18, this compares excellently with other authorities both in Hampshire and nationally.



## Making sure your Council Tax is well spent

Part of your Council Tax funds services provided by Fareham Borough Council such as waste collection and kerbside recycling, street cleaning, housing and community and leisure services.

The table below shows how we spend your money to provide services in Fareham.

REVENUE BUDGET SUMMARY	Budget	Budget	Change between
	2018/19	2019/20	2018/19 and 2019/20
	£	£	£
<b>Service Budgets</b>			
Planning Committee	565,100	485,700	-79,400
Licensing & Regulatory Affairs Committee	501,500	516,800	15,300
<b>Executive - Service Budgets</b>			
- Leisure & Community	1,526,300	1,668,800	142,500
- Housing	1,317,900	1,381,300	63,400
- Planning & Development	-46,300	-307,300	-261,000
- Policy & Resources	-1,224,500	-589,300	635,200
- Health & Public Protection	2,398,800	2,332,200	-66,600
- Streetscene	5,730,600	5,814,000	83,400
<b>Total Service Expenditure</b>	<b>10,769,400</b>	<b>11,302,200</b>	<b>532,800</b>
Other Budgets	-2,328,900	-2,635,800	-306,900
<b>NET EXPENDITURE</b>	<b>8,440,500</b>	<b>8,666,400</b>	<b>225,900</b>

## What is my Council Tax spent on?

The chart below shows you how much of your £160.22 (Band D) is spent on the different services we provide to our residents.

How your £160.22 is spent	
EMPTYING YOUR BINS	23.14
GOOD QUALITY GREEN SPACES	17.01
MANAGING GROWTH	15.88
AFFORDABLE HOUSING	13.40
REMOVING LITTER	13.01
CONTROLLING PROPERTY DEVELOPMENT	8.23
GIVING LOCAL PEOPLE A VOICE	6.91
WELL MAINTAINED SPORTS PITCHES	6.69
MOWING THE GRASS	6.31
KEEPING YOU INFORMED	6.00
PROTECTING YOUR HEALTH	5.87
A POPULAR LEISURE CENTRE	5.55
ENTERTAINMENT AT FERNEHAM HALL	5.34
SUPPORTING THOSE ON LOWER INCOMES	4.21
HELPING YOU FEEL SAFE AND SECURE	3.96
GRANTS	3.88
LOCAL COMMUNITY FACILITIES	3.26
PUBLIC CONVENIENCES	3.05
HELPING WITH TRAFFIC MANAGEMENT	1.71
CONSERVATION	2.07
PROTECTING THE COAST	1.36
PEST CONTROL	0.77
PLANNING FOR EMERGENCIES	0.68
PLAY AREAS	0.67
HOME IMPROVEMENTS	0.46
CREATING A VIBRANT TOWN CENTRE	0.48
A RANGE OF LOCAL JOB OPPORTUNITIES	0.32
A LOCAL MUSEUM	0.00
HELPING WITH BEREAVEMENT ARRANGEMENTS	0.00
HELPING YOU TRAVEL AROUND THE BOROUGH	0.00
HELPING WITH YOUR PROPERTY MOVES	0.00
LICENSING	0.00
PLACES TO PARK YOUR CAR	0.00
TOTAL TO BE MET BY FAREHAM COUNCIL TAX PAYERS	£160.22

## **Council Tax Support**

If you have made a claim for Council Tax Support, your Council Tax bill and enclosed Decision Letter will tell how much support you are entitled to. Please contact us to find out more about the Council Tax Support scheme and how to apply.

### **Contact us**

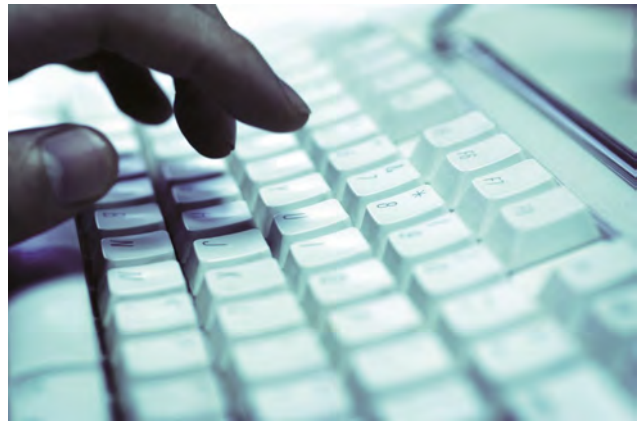
For more information regarding Council Tax please see the back of your Council Tax Bill or visit our website. Alternatively you can contact us at the Civic Offices and we will be happy to help you.

Tel: (01329) 824651

Email: [counciltax@fareham.gov.uk](mailto:counciltax@fareham.gov.uk)

Web: [www.fareham.gov.uk](http://www.fareham.gov.uk)

Civic Offices, Civic Way, Fareham, PO16 7AZ



### **How is the rest of my Council Tax spent?**

Further details on the spending plans of Hampshire County Council, Hampshire Police and Crime Commissioner and Hampshire Fire & Rescue Authority can be found at the following websites:

#### **Hampshire County Council**

For adult social care authorities, Council Tax bills show two percentage changes: one for the part of the overall change attributable to the adult social care precept and one for the part attributable to general expenditure.

<https://www.hants.gov.uk/aboutthecouncil/budgetspendingandperformance/council-tax-calculations>

#### **Hampshire Police and Crime Commissioner**

<https://www.hampshire-pcc.gov.uk/transparency/council-tax>

#### **Hampshire Fire & Rescue Authority**

[www.hantsfire.gov.uk/how-we-are-performing/our-performance/council-tax-information/](http://www.hantsfire.gov.uk/how-we-are-performing/our-performance/council-tax-information/)