

Council Tax Guide 2023/24

Welcome to your Council Tax guide

This brief guide will explain how your Council Tax helps to pay for the services Fareham Borough Council provides across the Borough.

Fareham's Council Tax increase

Following a consultation with residents living in the Fareham Borough, it has become clear that an increase in Council Tax is necessary to ensure that residents continue to receive the same high level of service they have come to expect.

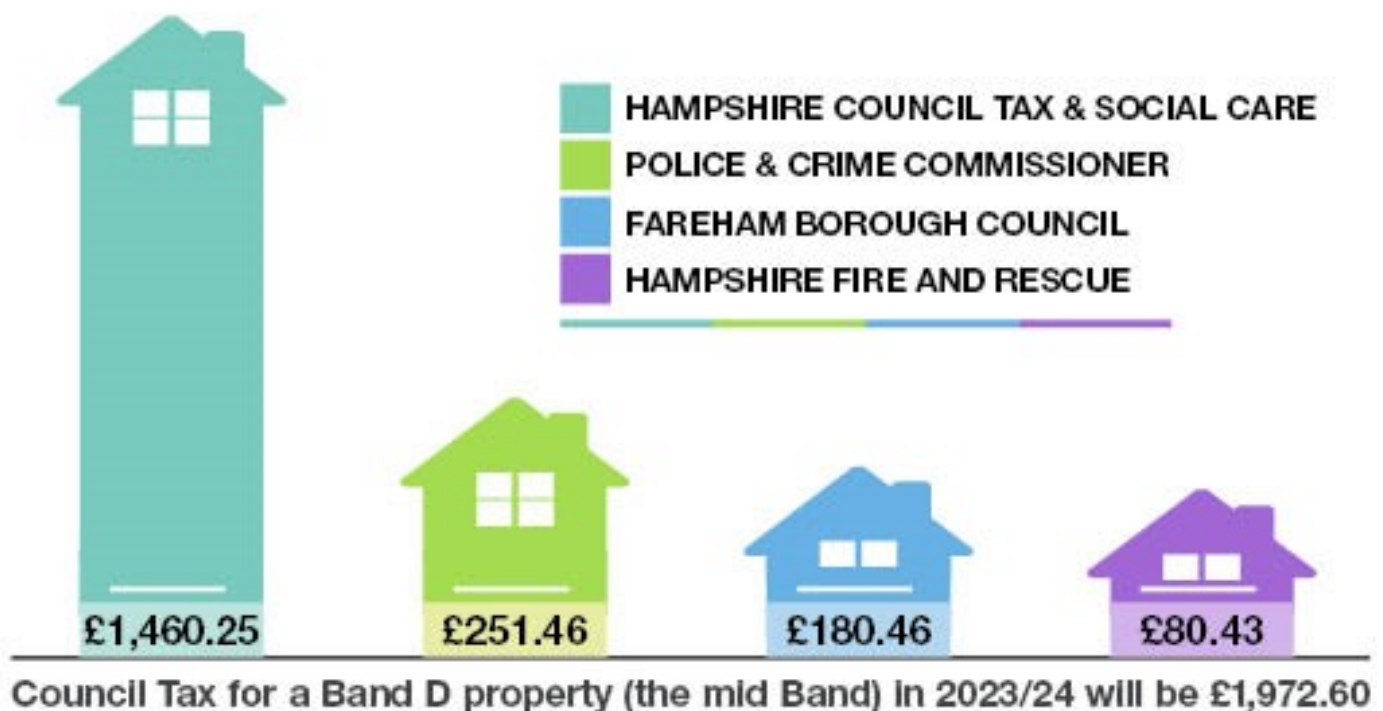
The 2022 Settlement was only for one financial year and once again delayed the details of the Fair Funding Review until at least 2025/26. With the outcome of this review unclear it remains important that the council continues to identify and secure cash-releasing efficiencies in order to maintain the high level of services that are currently provided. This also enables the council to achieve its corporate priority to minimise Council Tax increases.

How much of my Council Tax goes to Fareham Borough Council?

Just over 9% of the Council Tax you pay goes towards the services provided by Fareham Borough Council. Fareham's 2023/24 Band D charge of £180.46 (£175.22 in 2022/23) is an increase of £5.24 or 2.99%. In 2022/23, Fareham had the 2nd lowest Council Tax in Hampshire and the 6th lowest Council Tax across all District Councils in England.

Despite this increase we have one of the lowest Council Taxes in the country; this is achieved by running our services more efficiently and by careful financial management.

How your total Council Tax is made up:



How do we calculate the Council Tax in Fareham?

We produce a Finance Strategy each year. This helps us make spending, borrowing and investment decisions over the next 5 years.

The Council has £7.9 million revenue reserves (money saved to invest in the future), funds balances of £9.4 million and capital reserves of £13.9 million.

These are used to pay for new projects and services, meet any unforeseen costs and to smooth the effect of other financial pressures and changes in Government funding on Council Tax.

However, the Council's funds remain even tighter this year and are likely to be so for the foreseeable future because of economic pressures as a result of Government funding cuts and the cost-of-living crisis.



The table below shows the changes to the Council's budget for 2023/24.

COUNCIL TAX SUMMARY 2023/24			Amount per Band
2022/23		2023/24	D Property
£'000		£'000	£
10,272	Net Expenditure	11,897	269.53
	Less Income:		
-220	Lower Tier Services Grant	-340	-7.70
-84	Use of Collection Fund Balances	-0	0.00
-2,578	Retained Business Rates	-3,592	-81.37
7,391	Fareham Borough Council Total	7,965	180.46
Add:	Hampshire County Council Precept		1,460.25
	Hampshire Fire and Rescue Authority Precept		80.43
	Police and Crime Commissioner Precept		251.46
	TOTAL		£1,972.60

Good at collecting Council Tax

Fareham Borough Council maintains excellent collection rates for Council Tax. We collected 98.4% of the Council Tax due in 2021/22, this compares excellently with other authorities both in Hampshire and nationally.

Making sure your Council Tax is well spent

Part of your Council Tax funds services provided by Fareham Borough Council such as waste collection and kerbside recycling, street cleaning, housing and community and leisure services.



The table below shows how we spend your money to provide services in Fareham.

REVENUE BUDGET SUMMARY 2023/24	Budget	Budget	Change between
	2022/23	2023/24	2022/23 and 2023/24
Service Budgets	£	£	£
Planning Committee	439,500	694,300	254,800
Licensing & Regulatory Affairs Committee	574,400	540,400	-34,000
Executive - Service Budgets			
- Leisure & Community	-17,500	-41,200	-23,700
- Housing	2,083,000	2,270,800	187,800
- Planning & Development	1,636,600	1,999,600	363,000
- Policy & Resources	44,400	222,500	178,100
- Health & Public Protection	615,700	765,800	150,100
- Streetscene	4,944,100	5,160,600	216,500
Accounting Adjustments in Service Portfolios	3,147,200	4,101,900	954,700
Total Service Expenditure	13,467,400	15,714,700	2,247,300
Other Budgets	-2,679,400	-3,817,600	-1,138,200
NET EXPENDITURE	10,788,000	11,897,100	1,109,100

What is my Council Tax spent on?

The chart below shows you how much of your £180.46 (Band D) is spent on the different services we provide to our residents.

How your £180.46 is spent	
EMPTYING YOUR BINS	28.00
AFFORDABLE HOUSING	21.40
GOOD QUALITY GREEN SPACES	20.50
MANAGING GROWTH	17.19
REMOVING LITTER	16.60
CONTROLLING PROPERTY DEVELOPMENT	11.16
KEEPING YOU INFORMED	8.28
GIVING LOCAL PEOPLE A VOICE	7.66
SUPPORTING THOSE ON LOWER INCOMES	6.59
MOWING THE GRASS	6.57
CONSERVATION	6.39
PROTECTING YOUR HEALTH	6.31
GRANTS	3.39
HELPING YOU FEEL SAFE AND SECURE	3.37
PUBLIC CONVENIENCES	3.28
FAREHAM LIVE	2.50
LOCAL COMMUNITY FACILITIES	2.11
WELL MAINTAINED SPORTS PITCHES	1.88
A RANGE OF LOCAL JOB OPPORTUNITIES	1.24
CREATING A VIBRANT TOWN CENTRE	1.11
PROTECTING THE COAST	1.02
PEST CONTROL	0.97
HELPING WITH TRAFFIC MANAGEMENT	0.82
PLANNING FOR EMERGENCIES	0.77
HOME IMPROVEMENTS	0.47
HELPING YOU TRAVEL AROUND THE BOROUGH	0.41
PLAY AREAS	0.29
LICENSING	0.18
LEISURE CENTRES	0.00
HELPING WITH BEREAVEMENT ARRANGMENTS	0.00
PLACES TO PARK YOUR CAR	0.00
HELPING WITH YOUR PROPERTY MOVES	0.00
TOTAL TO BE MET BY FAREHAM COUNCIL TAX PAYERS	180.46

Council Tax Support

If you have made a claim for Council Tax Support, your Council Tax bill and enclosed Decision Letter will tell how much support you are entitled to. Please contact us to find out more about the Council Tax Support scheme and how to apply.

Contact us

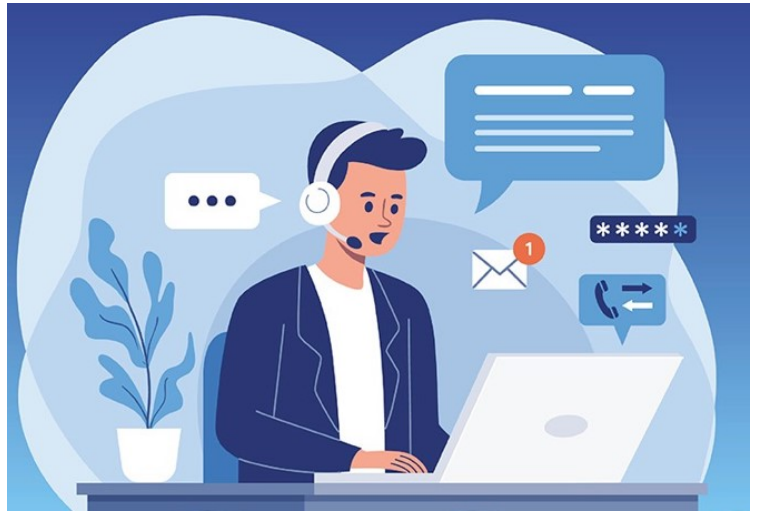
For more information regarding Council Tax please see the back of your Council Tax Bill or visit our website. Alternatively you can contact us at the Civic Offices and we will be happy to help you.

Tel: (01329) 824651

Email: counciltax@fareham.gov.uk

Web: www.fareham.gov.uk

Address: Civic Offices, Civic Way, Fareham,
PO16 7AZ



How is the rest of my Council Tax spent?

Further details on the spending plans of Hampshire County Council, Hampshire Police and Crime Commissioner and Hampshire and Isle of Wight Fire and Rescue Authority can be found at the following websites:

Hampshire County Council

For adult social care authorities, Council Tax bills show two percentage changes: one for the part of the overall change attributable to the adult social care precept and one for the part attributable to general expenditure.

www.hants.gov.uk/counciltax

www.hants.gov.uk/aboutthecouncil/budgetspendingandperformance

Hampshire Police and Crime Commissioner

www.hampshire-pcc.gov.uk/transparency/money/council-tax

Hampshire and Isle of Wight Fire and Rescue Authority

www.hantsfire.gov.uk/about/council-tax