



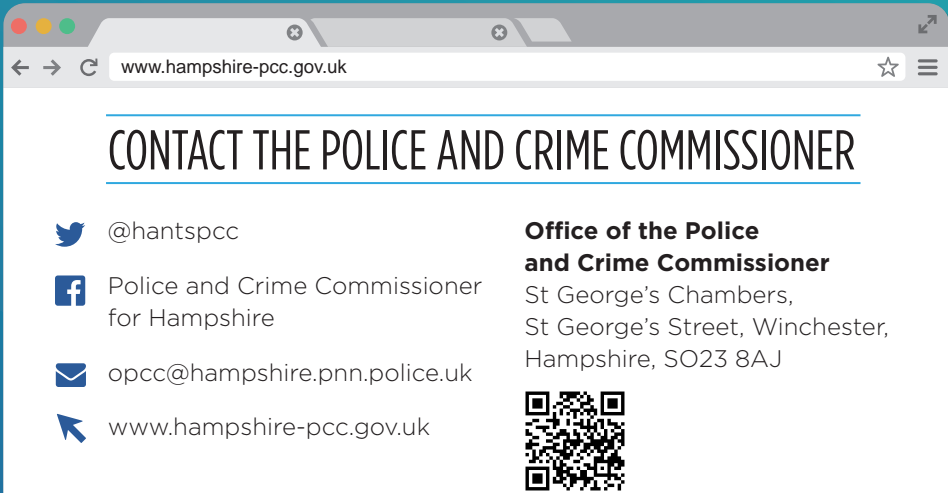
**HAMPSHIRE  
ALERT**

To receive information, crime alerts and witness appeals local to the area in which you live or work register with Hampshire Alerts.  
[www.hampshirealert.co.uk](http://www.hampshirealert.co.uk)

If you are deaf or hard of hearing call please **18001 101** for non-urgent enquiries. In an emergency call **18000**.



Serving  
Hampshire  
Isle of Wight  
Portsmouth  
Southampton



As recommended by the Police and Crime Panel, this leaflet has been supplied to inform you how the Police and Crime Commissioner's budget is spent

# KEEPING YOU AND YOUR FAMILY SAFER



For information on how to help protect yourself, your family, your home and your community visit  
[www.hampshire-pcc.gov.uk/crime-prevention](http://www.hampshire-pcc.gov.uk/crime-prevention)



Police and Crime Commissioners were brought in to make policing more accountable and give people a greater voice on police and crime matters.

As your Police and Crime Commissioner, it is my vision that Hampshire, the Isle of Wight, Portsmouth and Southampton are amongst the safest places to live, work and visit.

To keep us all safer in times of financial constraint is challenging, particularly when facing increasing demand and a shift to more complex and resource intensive work, such as investigating cyber-crime, child sexual exploitation and modern slavery. Hampshire Constabulary is adapting the way it operates in order to meet this changing demand and be more efficient.

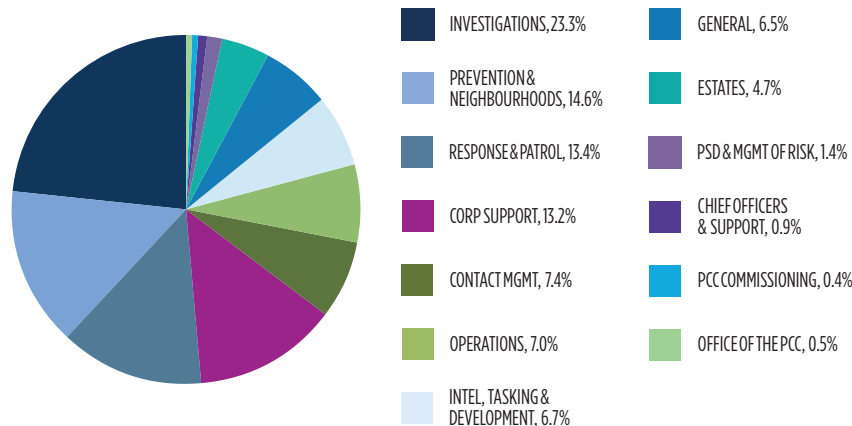
This year I have sought to be transparent about the money that is spent by my office to support the most vulnerable in our communities, reduce offending, and prevent crime, and to be clear about the investments I am making to ensure officers have the right technology and facilities to deliver a policing service that is modern, operationally effective and efficient.

You can sign up for regular updates from me at [www.hampshire-pcc.gov.uk/commissioner/myblog](http://www.hampshire-pcc.gov.uk/commissioner/myblog)

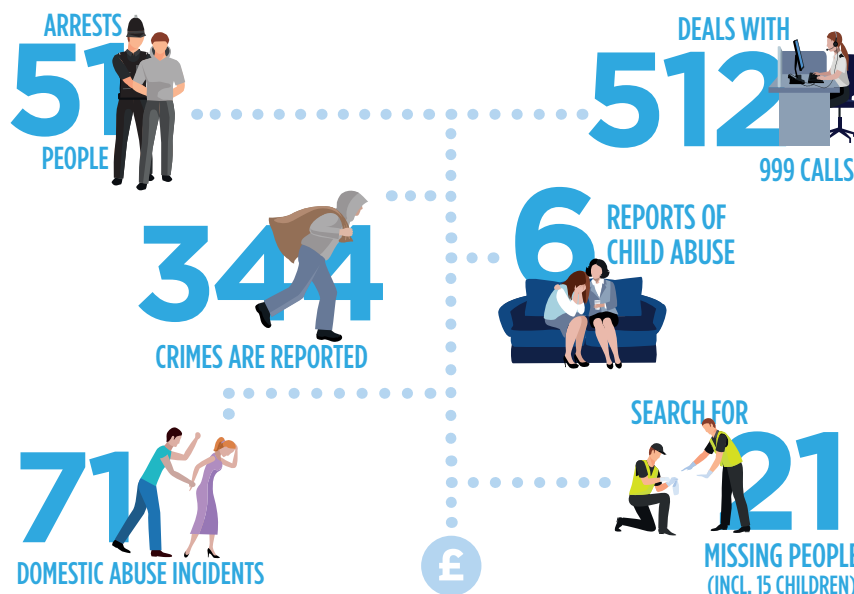
**MICHAEL LANE**  
POLICE AND CRIME  
COMMISSIONER



## WHAT THE MONEY SUPPORTS 2018/19



## DAY IN THE LIFE OF HAMPSHIRE CONSTABULARY



Band	What you will pay this year	Band	What you will pay this year
A	£118.31	E	£216.90
B	£138.02	F	£256.33
C	£157.74	G	£295.77
D	£177.46	H	£354.92

## POLICING

In 2018/19, of the **£315 million** available to me, I will allocate 98.3% to policing. This is made up of two thirds (63%) funding from national government grant and one third (37%) council tax.

The amount of national funding Hampshire Constabulary receives from Government will broadly remain the same, however the costs of providing policing services are rising.

Consultation with residents showed me that our communities are willing to contribute a greater amount to minimise reductions in service that could impact on the ability of the Constabulary to keep us all safer from the greatest threats and risks of harm. The council tax you pay for policing is still one of the lowest in the land.

## BEYOND POLICING

A core part of my job is to support victims, protect the vulnerable, and reduce the demand on policing through interventions that enable people to realise life opportunities and their full potential; helping people avoid triggers that might otherwise lead them into anti-social behaviour or crime.

In 2017/18 I **supported over 70 projects**; from activities for young people, to advocacy support for stalking victims, to projects that work with offenders to beat substance misuse. I also contract a number of services including a Victim Care service that **supports more than 70,000 victims each year**, Restorative Justice that helps victims gain answers from those who caused them harm, and Domestic Abuse support services. All of which reduced the burden on the police force.

**More information can be found on my website** [www.hampshire-pcc.gov.uk/funded](http://www.hampshire-pcc.gov.uk/funded)