

# IF YOU OR SOMEONE YOU KNOW IS AFFECTED BY CRIME, HERE'S WHAT TO DO....

## REPORTING CRIME

### HAMPSHIRE CONSTABULARY

In an emergency: if it's happening now, someone is in danger, or the offender is still nearby, **call 999** immediately

If it's less urgent, **call 101** or report online and get advice:  
[hampshire.police.uk](http://hampshire.police.uk)

Prefer to report anonymously?  
Crimestoppers **0800 555 111**  
[crimestoppers-uk.org](http://crimestoppers-uk.org)

**Fraud or Cyber Crime**  
[actionfraud.police.uk](http://actionfraud.police.uk)  
or **0300 123 2040**

**Hate Crime**  
[report-it.org.uk/home](http://report-it.org.uk/home)  
or find your closest third party reporting centre:  
[bit.ly/hatecrimeTPRC](http://bit.ly/hatecrimeTPRC)

**Modern Slavery**  
[modernslaveryhelpline.org/report](http://modernslaveryhelpline.org/report)  
or **call 08000 121 700** to report a suspicion or seek help and advice

## CRIME PREVENTION

Be alerted to crimes in your area register with Hampshire Alert  
[hampshirealert.co.uk](http://hampshirealert.co.uk)  
[iowalert.co.uk](http://iowalert.co.uk)

Find out about your local neighbourhood watch: [ourwatch.org.uk](http://ourwatch.org.uk)

## BEEN A VICTIM?

### Victim Care Service

If you've been a victim of crime or affected by crime in Hampshire or the Isle of Wight and need support, call the Victim Care Service on **0808 178 1641** (open Monday to Saturday from 8am to 8pm) or visit:  
[hampshireiowvictimcare.co.uk](http://hampshireiowvictimcare.co.uk)

### Restorative Justice

Restorative Justice gives victims an opportunity to communicate with the person responsible for the offence. Find out more call **0800 043 8785** or visit:  
[rjhampshire.co.uk](http://rjhampshire.co.uk)



Serving  
Hampshire  
Isle of Wight  
Portsmouth  
Southampton

# Investing in policing to meet local needs and keep you, your family and your community safer.



## WANT TO CONTACT THE POLICE AND CRIME COMMISSIONER?

[hampshire-pcc.gov.uk/contact-us](http://hampshire-pcc.gov.uk/contact-us)

Office of the Police & Crime Commissioner, St George's Chambers, St George's Street, Winchester, Hampshire, SO23 8AJ

@hantspcc

@MichaelLanePCC

01962 871595

If you would like to be consulted directly about the police budget or be part of PCC consultations in the future, please scan here to register your details:



If you or anyone in your family would like this information in a different format, please email us at [opcc@hampshire.pnn.police.uk](mailto:opcc@hampshire.pnn.police.uk) or through the contact details shown above.

This year, the Police and Crime Commissioner will allocate the additional funds raised, through the police element of council tax, to directly support local policing. The table below shows what you will pay based on the band of your property, towards policing through your council tax:

Band	Total you will pay for policing this year	Band	Total you will pay for policing this year
A	£134.31	E	£246.23
B	£156.69	F	£291.00
C	£179.08	G	£335.77
D	£201.46	H	£402.92

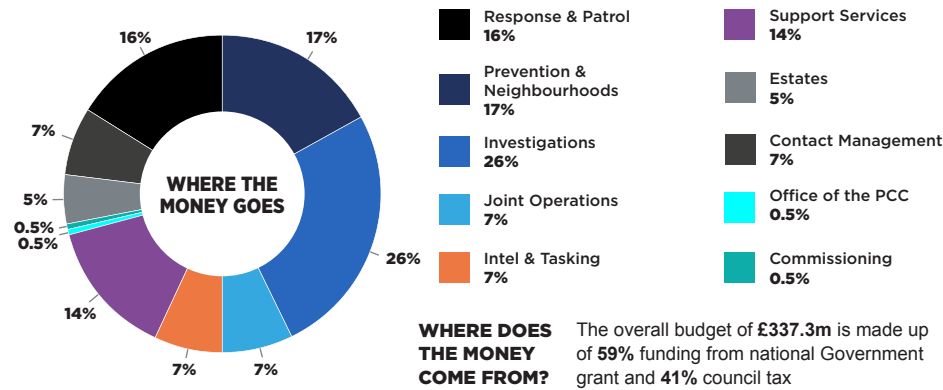
Policing is under significant financial pressure whilst experiencing exceptional operational demand. I have responsibility for setting the policing budget locally, and I do this based on consultation with the community and advice from the Chief Constable on what she needs to deliver effective operational policing.

This year local residents supported an increase of £2 per month (based on a Band D property) to support local policing. This gives me a real opportunity to stop the ongoing reduction in police numbers, and will enhance current capacity and protect local policing. The Chief Constable and I will work together to ensure that this additional funding delivers real improvement to our safety and allows Hampshire Constabulary to increase its offensive against crime in our communities.

Michael Lane  
Police and Crime Commissioner

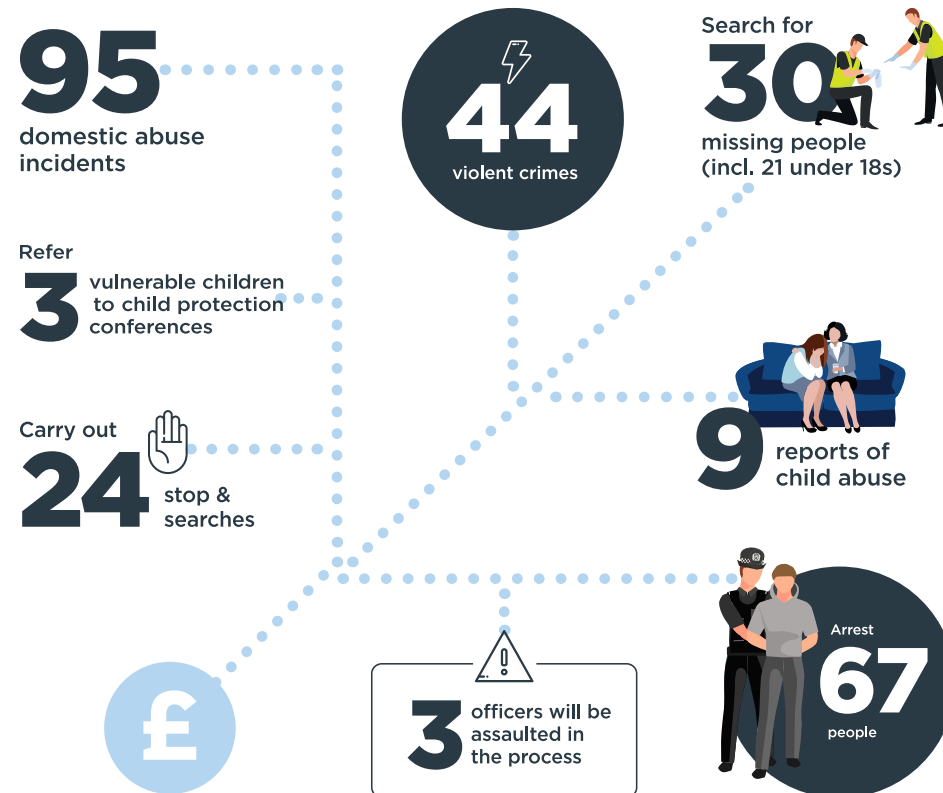


## WHERE THE MONEY GOES 2019/20



**WHERE DOES THE MONEY COME FROM?** The overall budget of £337.3m is made up of 59% funding from national Government grant and 41% council tax

## A DAY IN THE LIFE OF HAMPSHIRE CONSTABULARY



## POLICING

The increase shown on your council tax bill, which is allocated to the Police and Crime Commissioner, will provide £16million of essential funding for policing across Hampshire, the Isle of Wight, Portsmouth and Southampton. All of this additional money will help to protect local policing and will enable the training and recruitment of

- 200 new police officers
- 65 police staff investigators
- training for PCSOs

The nature of crime is changing. It is essential to ensure we stay ahead of criminals and those who wish us harm. There are growing demands as a result of violent crime, including knife crime, and traditional risks continue, such as anti-social behaviour and burglary. But demand is increasing also from new forms of crime, such as cyber-crime and online vulnerabilities including fraud. The Chief Constable will determine how the extra officers will tackle local crime and keep us all SAFER from new and current threats.

## SUPPORTING POLICING, VICTIMS, AND THE VULNERABLE

Keeping people SAFER is not just a matter for policing, but one that must be shared. It is just as much about tackling the root causes of crime as tackling the crime itself and its consequences. Police and Crime Commissioners fulfil a vital role in fostering collaborative working to keep us all SAFER and release officers back to the front line where they are needed most.

Annually as Police and Crime Commissioner I invest in around 70 projects that help to prevent crime, reduce offending, protect the vulnerable and support victims of crime. Importantly, these projects not only help to improve the lives of individuals, but also help to reduce the demand and pressure on policing.