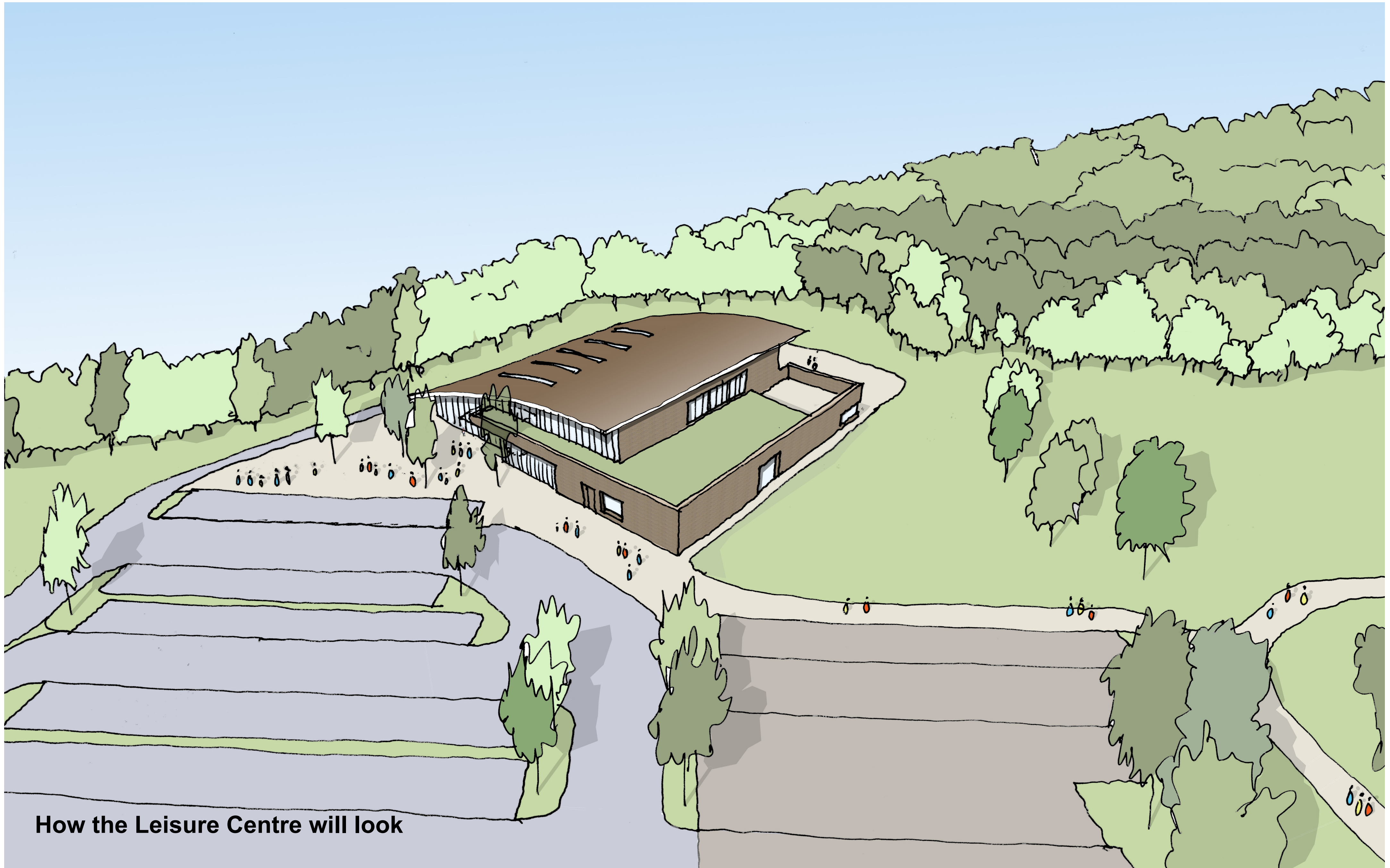


Welcome to the Western Wards Leisure Centre Exhibition



How the Leisure Centre will look

Welcome

Fareham Borough Council is planning to build a new £7m Leisure Centre with swimming pool on the site of the old Coldeast Hospital off Barnes Lane.

What's in the exhibition?

In this exhibition you will be able to find out more about:

- Why we are building a new Leisure Centre
- What the site will look like
- How the Leisure Centre will look and the facilities it will offer
- The football pitches and play area
- The new cemetery and allotments
- Trees and plants on site

Please take a look at the boards and let us know what you think.

How can I have my say?

You can complete one of the paper comments forms or take part online at www.fareham.gov.uk.



FAREHAM
BOROUGH COUNCIL

Balfour Beatty

AFLS+P

Hydrock

BAQUS
Construction Consultancy

How the site will look



How the site will look

Why build the Leisure Centre on this site?

We worked with specialist leisure consultants and also took into account a number of planning issues. From this work, it was clear that the Coldeast site was the best site available in the western wards.

What's there now?

This is an area of private woodland and fields which will come under the control of the Council.



Getting to the site by car

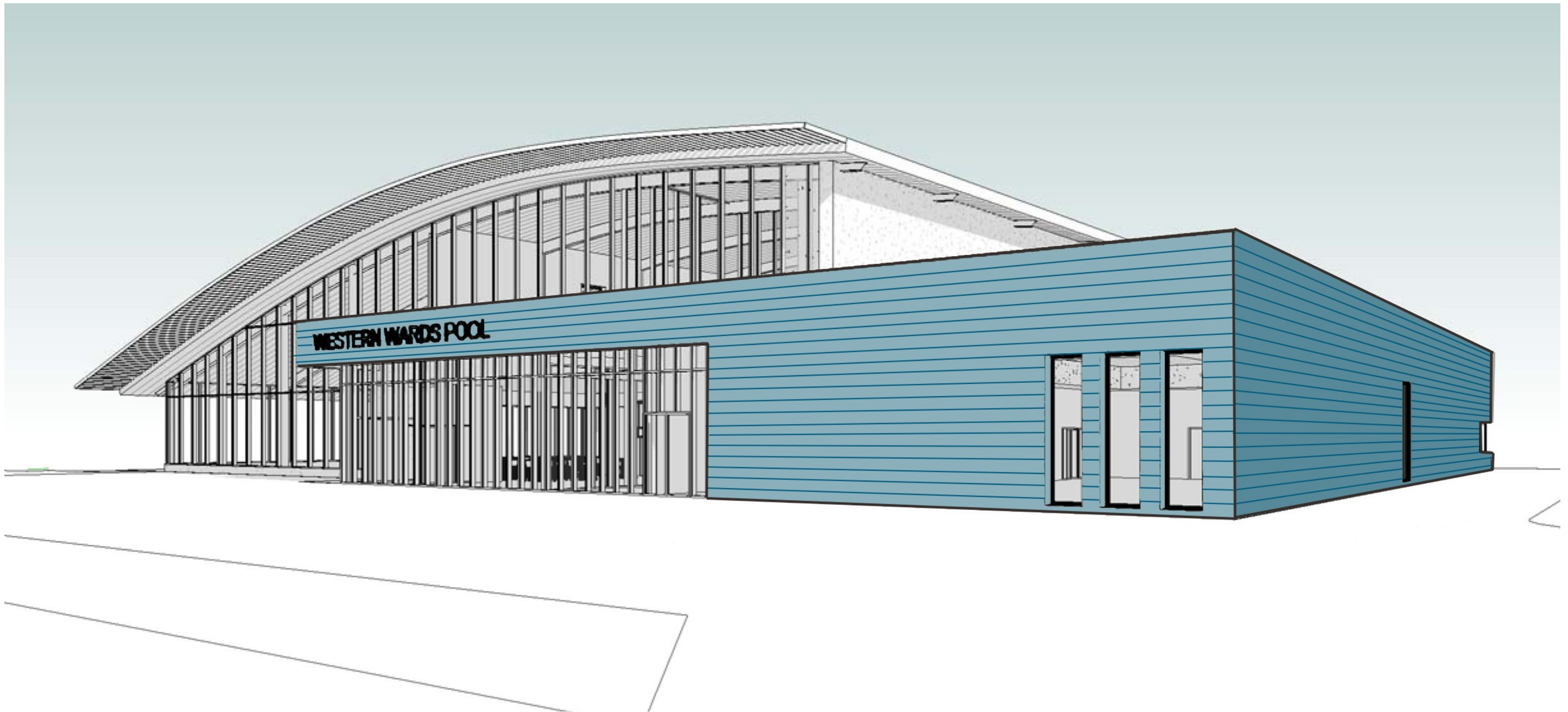
We have worked with expert engineers and Hampshire Highways to find the best location for the entrance to the site. Having the entrance on Barnes Lane will allow easy access to the swimming pool. Our plan for the junction has already received full planning permission.

Getting to and around the site on foot or bike

Safe routes to the surrounding schools for walkers and cyclists have already been created through the site by the housing developer. These will be retained, although there may be some minor diversions to avoid the new car park.



The Leisure Centre



Why are we building a new Leisure Centre?

The provision of a Leisure Centre with a public swimming pool in the western part of the Borough has been a priority for the Council for a number of years. Many of our residents have told us that a new pool is needed and our own research shows improved leisure facilities helps maintain people's health and wellbeing.



What facilities will it have?

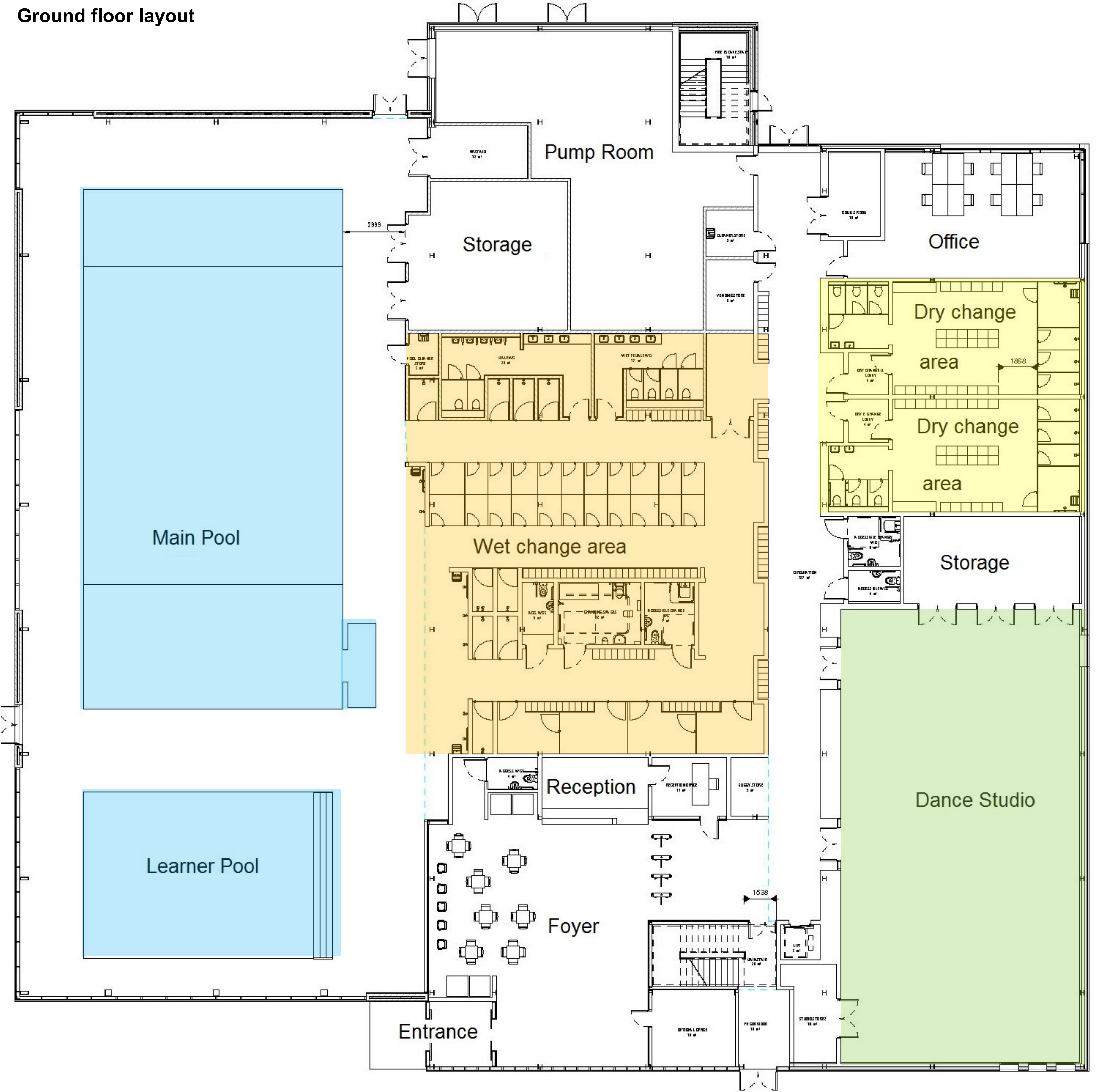
We have appointed Balfour Beatty, the firm that constructed the Aquatic Centre for the 2012 London Olympics, to design and build the new centre which will have:

- A 25 metre pool with 6 swimming lanes
- A learner pool
- A gym with 100 pieces of equipment
- Exercise room
- Dance studio



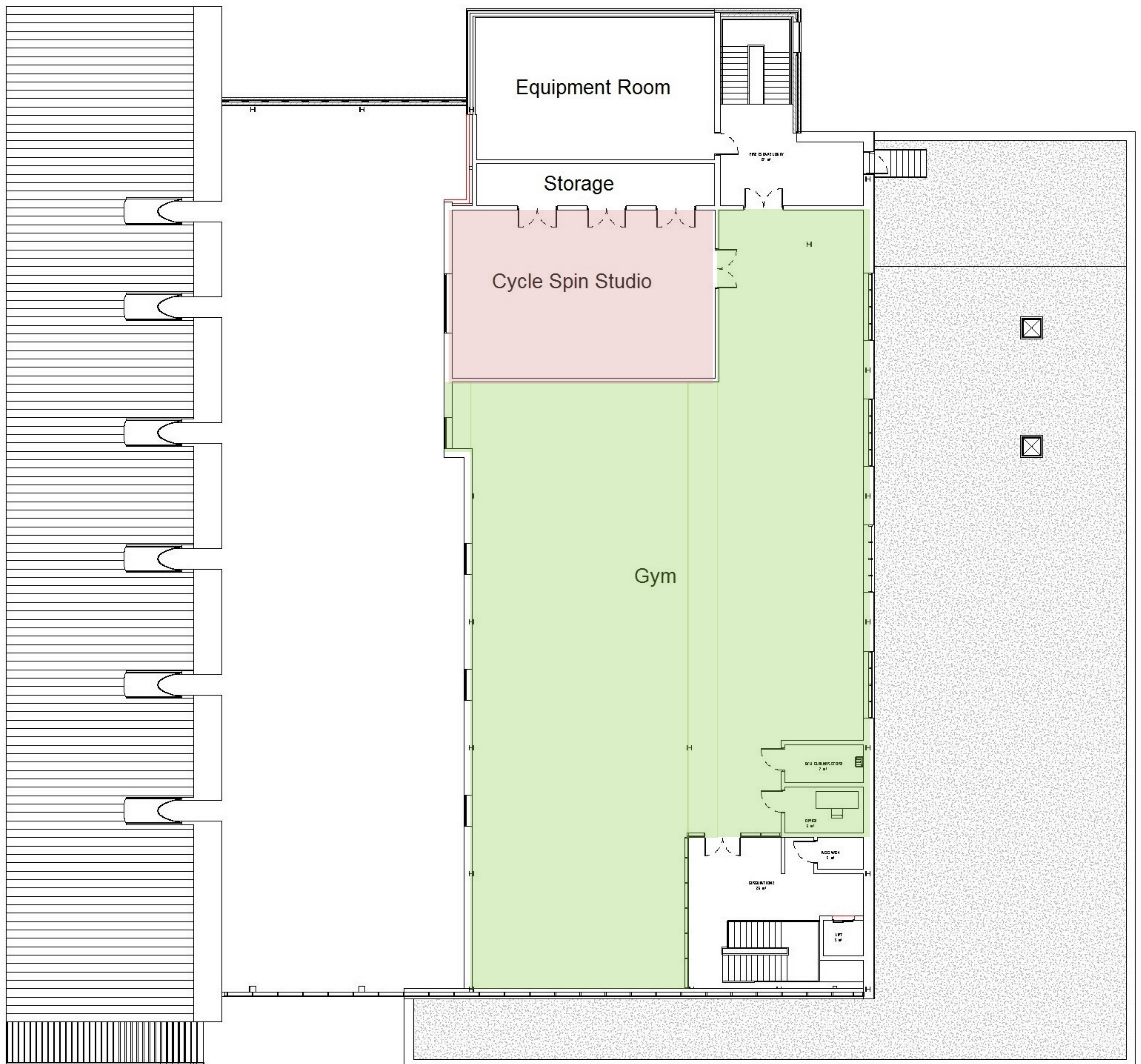
Inside the Leisure Centre

Ground floor layout



Inside the Leisure Centre

First floor layout



Football Pitches, Changing Rooms and Play

Why football pitches?

There has been a longstanding need for more football pitches in the western wards. We have consulted with local junior football clubs about the best type of pitches to have at the site. It was agreed that 2 football pitches, one full size and a smaller one for juniors would offer the most flexibility and meet the needs of local clubs and residents.

Changing rooms

The changing rooms will allow people playing on the pitches to use the toilet, get changed and showered in a clean and comfortable environment.



Play Area

Helping to bring youth back to nature, a brand new wood themed play area for children will also be provided. This will be unique, taking inspiration from its surrounding. The play area will provide exciting and challenging play opportunities for all children, including tunnels, slides and tree houses!

Consultation will be carried out with local residents and schools to seek their ideas and suggestions on the type of equipment they would like to have included in the play area.



Multi-use Games Area (MUGA)

A multi-sports facility provides a dedicated all weather play surface for a range of sports to be played on all year round, including; football, basketball and netball. Suitable for a range of ages and abilities.



How the MUGA will look

Allotments, Cemetery and What Next



Why do we need more allotments?

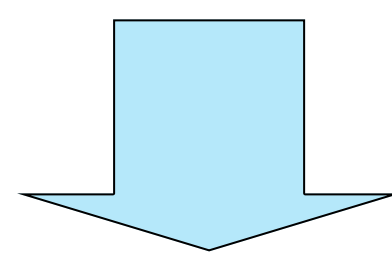
There has been a growing interest in allotments over the last 5 years. At the moment, there are around 300 people on the waiting list for an allotment in Fareham, with a large number of these living in the western wards. The new allotments will allow more local residents to enjoy the wide ranging benefits that allotment gardening provides.

Why do we need another cemetery?

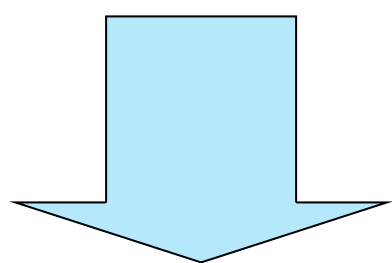
Holly Hill Cemetery which is the closest cemetery to the site is full and there is a need for more spaces to cater for the western wards. The new cemetery will help meet the needs of the local area.

What happens next?

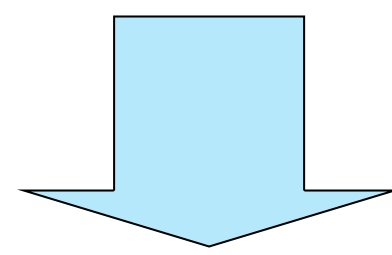
November 2014: Apply for planning permission for the Leisure Centre



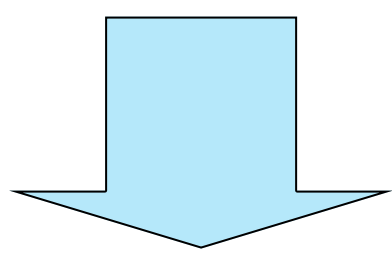
December 2014: Apply for planning permission for the changing rooms and football pitches



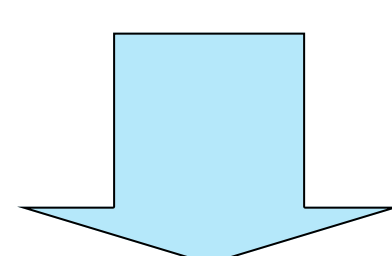
January 2014: Apply for planning permission for the allotments and cemetery (subject to environmental approvals)



Spring 2015: Start construction



Spring 2015: Appoint operator to run the Leisure Centre



Spring/Summer 2016: Open the Leisure Centre, allotments and cemetery

Conservation Improvements

Conservation areas

Alongside the Leisure Centre, there is a large area of land on the site that supports woodlands, meadows, a pond and an orchard. This land has been taken on by the Council's Countryside Service and will be managed for nature conservation and public enjoyment.

We are working on a 10 year management plan that will help us decide how best to look after the different wildlife habitats on the site.



Get your boots on

It is intended that the local community will be invited to become involved in the conservation with weekly work parties taking place.



A map showing the different conservation areas on the site

Conservation Improvements



Orchard

The orchard will be restored. Work will take place to remove scrub and trees will be pruned.



Conservation Woodland

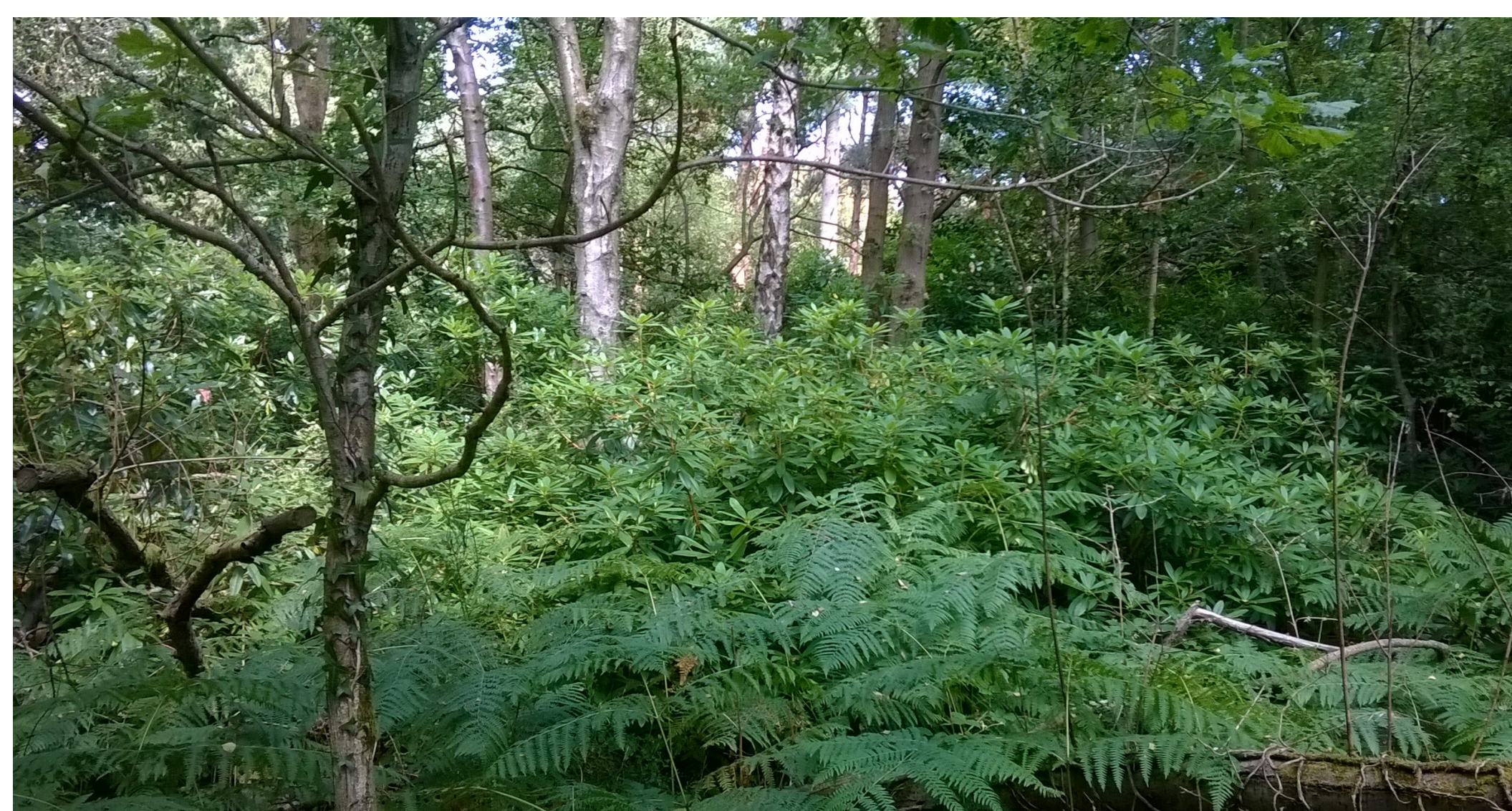
Invasive species will be removed and the rest of the woodland will be left in a semi-natural state to create a conservation woodland area.



Pond

Work has already started at the pond to cut back vegetation. Banks will be widened and stabilised and scrub and trees around most of the pond will be removed to open it up to the public.

The pond will be dredged and some invasive species will be removed to encourage more wildlife. There is potential to include a feature bridge at one end of the pond.



Community Woodland

Invasive species such as Rhododendron and Laurel will be removed and native species including Hawthorn, Hazel and Field Maple will be replanted. The current paths will be neatened and maintained. Way-marking posts will also be installed.



Meadows

All the scrub will be removed which will improve grassland and wildflower seeds will be sown.