

Welcome



IFA 2 – Community Action Team Meeting
Chairman – Councillor Mrs Kay Mandry

FAREHAM
BOROUGH COUNCIL

Keeping the lights on – IFA2

Councillor Seán Woodward

Executive Leader

Fareham Borough Council



What is IFA2?

- IFA2 (Interconnexion France-Angleterre 2)
- Electricity interconnector
- Connect electricity transmission systems of UK and France
- Share power



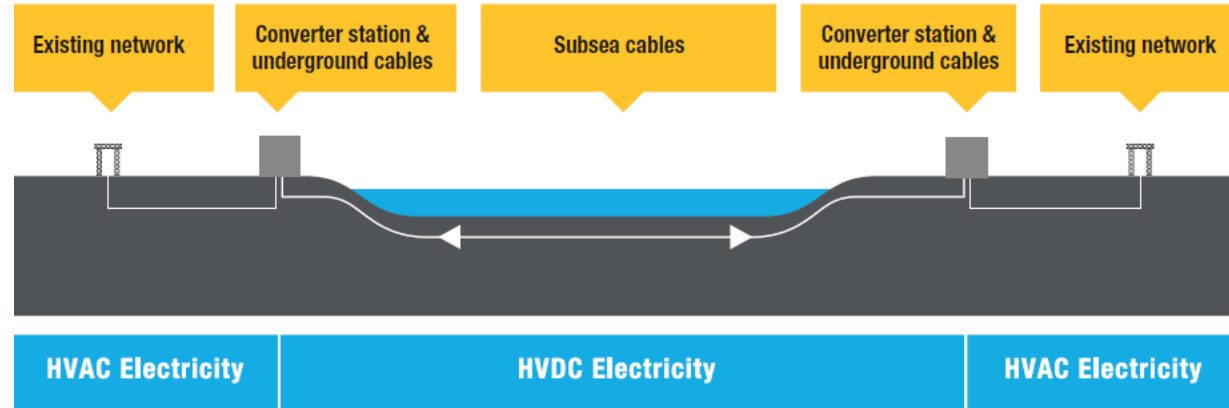
Why do we need IFA2?

- Enough energy to power 1 million homes
- Benefits:
 - Affordability
 - Security of supply
 - Sustainability



How does IFA2 work?

- Over 100 miles of undersea cables
- Converter station at each end
- Changes direct current (DC) to alternating current (AC)
- Substation then connects to National Grid

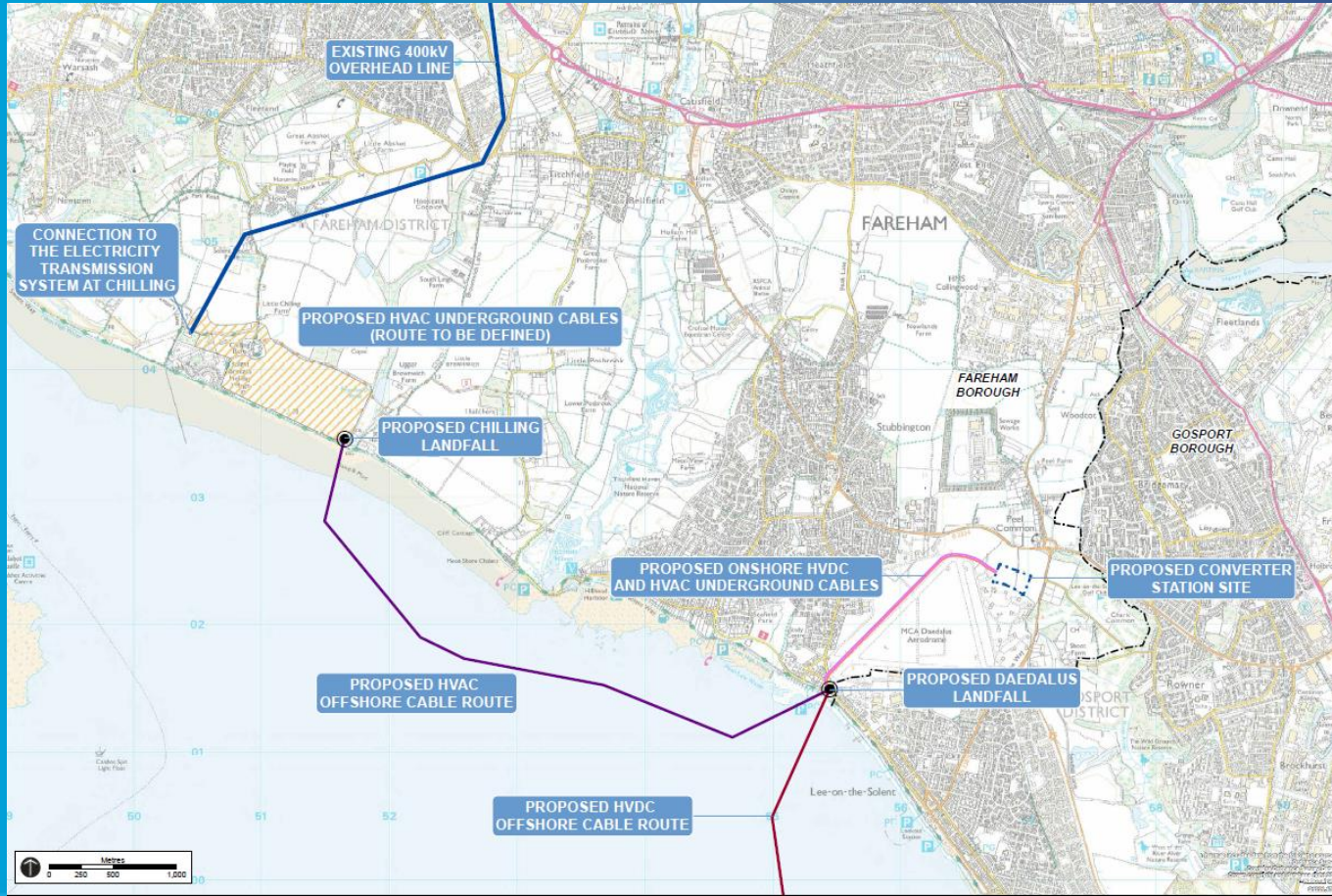


Other sites looked at

- National Grid also looked at:
- Devon and Dorset
 - Economically unviable
 - Low power generation locally
- Kent and East Sussex
 - Already has existing & proposed interconnectors



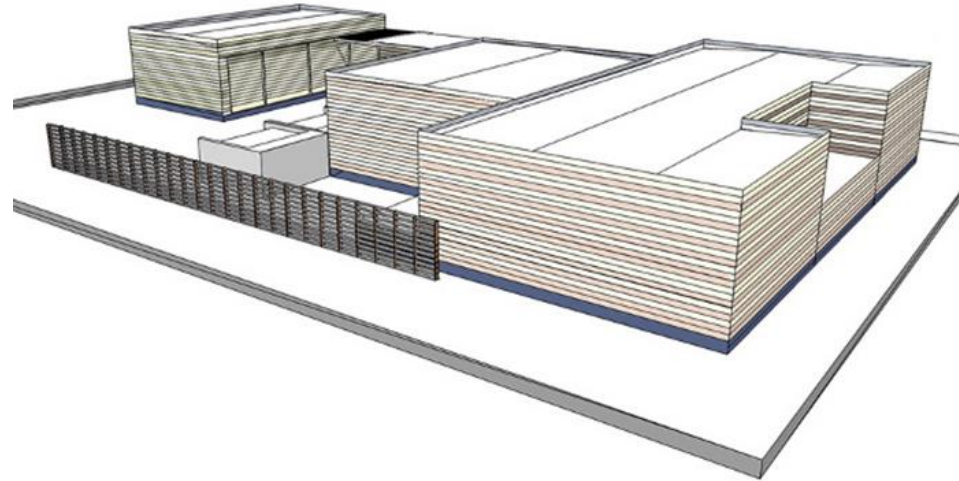
IFA2 in Fareham



Converter Station

- Needs to be close to the Chilling substation
- No pylons
- Well designed building
- Minimise impact on site

Illustrative option of South East View



Who is involved?

- National Grid:
 - National Grid IFA2 Ltd – set up to develop project
 - National Grid Electricity Transmission plc (NGET) – oversees connection to electricity network



What has been decided so far?

- Council Executive decision
- In principle agreement to lease land at Daedalus subject to:
 - Planning consent
 - Technical assessments
 - Payment of premium
 - Community infrastructure payments



Fareham Borough Council

- **Landowner at Daedalus**
- Fits with Council's Vision for Daedalus
- Allows for more investment in the site
- Better site for Converter than Chilling



Fareham Borough Council

- **Planning Authority**
- Need to consider:
- Effect on landscape and views
- Effect on ecology, especially the coastline
- Noise and Vibration
- Impact on airfield



What next?

- **Early 2016:** Second round of public consultation by **National Grid**
- **March/April 2016:** **National Grid** submission of outline planning application and Marine Licence application
- **September 2016:** **Council** decision on outline planning application
- **November 2016:** **National Grid** investment decision
- **2017:** Design finalised
- **2018:** Construction scheduled to start
- **2020:** Construction due to be completed – IFA2 is operational

Questions?