

FAREHAM IN BLOOM PORTFOLIO 2015



Bringing People and Parks Together

FAREHAM
BOROUGH COUNCIL

fareham SHOPPING CENTRE
at the Heart of the Community

St Margaret's
Nurseries

FAREHAM IN BLOOM

Bringing People and Parks Together



A very warm welcome to Fareham

Midway between Portsmouth and Southampton with Fareham town at its heart, this thriving and green Borough with a population of over 110,000 covers some 29 square miles featuring town and village centres bordering both coast and countryside.

Bringing People and Parks Together is our Fareham in Bloom community environmental campaign. We the aim to maintain and improve the quality and diversity of our green space provision, working in partnership with the local community, encouraging active participation in parks and horticultural activities.

The campaign is run by the Council in partnership with a dedicated group of Voluntary Coordinators who work tirelessly throughout the year to organise and deliver a programme of events and activities which seek to involve the community, develop awareness and improve horticultural excellence.

To achieve consistent successes doesn't come easy and has been built up on solid foundations and progressive and sustainable improvement. That said we need to continually adapt, move with the times and take new ideas forward.

Each year we aim to improve and upgrade our parks provision and come up with new and innovative ideas to encourage participation and all importantly profile the work that we do.

2015 celebrates 20 years of Fareham in Bloom and we have taken on a number of significant new landscaping regeneration projects as well as a host of new public events, many of which you will become familiar with both in this portfolio and on your visit.

To mark our 20th year we have, with the sponsorship of Fareham Shopping Centre, produced 5000 wild flower seed cards that have been given away to the community for people to enjoy in their own gardens.

Wild flower meadows have become a national talking point in recent years and in Fareham we embraced this in a big way with a further three new sites now bringing the number sown to eleven in just 4 years. They are a challenge in their own right and we are still learning, but it is clear that they are much loved within the community and balance the more formal plant collections we have.

Attendance and participation numbers are growing year on year so to take this further we have 10 new events programmed to encourage people to get outside, learn new skills and enjoy the beauty of our parks and countryside locations.

Some twenty years on we feel we have established something quite special, possibly quite unique, involving literally thousands of people who participate and give willingly. Fareham in Bloom has become a very well respected community engaging campaign.

It is part of the fabric of our community, and we very much hope you will enjoy your visit to Fareham, the lovely sites you will see, and of course the inspirational people you will meet, without whom it just wouldn't be possible.

Matt Wakefield

Horticultural Development Officer, Fareham Borough Council.

SUPPORTING FAREHAM IN BLOOM



On behalf of 'the team' I am delighted and privileged to welcome the South and South East England In Bloom Judges to Fareham.

This year is particularly special as we are celebrating the twentieth year of our 'In Bloom' association. From humble beginnings, forged from a relationship between a dedicated group of volunteers and the Council, this initiative has become one of the biggest and, from my perspective, most respected in the south of England.

Fareham regards itself as an 'In Bloom' Town and as you undertake your Judging journey I am sure you will find this evident. We are truly proud of what has been achieved and each year we continue to develop, innovate and, at times, exceed our expectations.

As you travel around our Borough you will see for yourself the results of the hard work and dedication of the extraordinary private and public relationship between Fareham Borough Council and the Voluntary Sector. None of the outcomes could have been achieved without this 'special' coming together and I am truly grateful to everyone who supports us which, in turn, ensures that the Borough is maintained to the very highest standard year on year.

Once again we have retained the Green Flag status at Holly Hill Woodland Park and the Sensory Garden of Reflection. As you are very well aware, these awards are the national standard for parks and are held in the highest esteem. Again, none of these awards would have been possible without the help of the Friends of Holly Hill Woodland Park, the Fareham In Bloom co-ordinators, officers and members of the grounds maintenance and cleansing teams.

Three years ago we started the 'Going Wild' initiative to bring wild flower meadows across the Borough. This scheme has been a huge success with regular accolades from residents.

I would like to record my very sincere thanks to everyone who has been involved throughout the year, our 'In Bloom' organisers, the Officers, volunteer co-ordinators, competition judges and sponsors as without their hard work, passion, dedication and commitment none of this would be possible and our residents would not reap the benefits of living in an 'In Bloom' Borough.

Councillor Connie Hockley

Chairman Leisure & Community Policy and Review Panel

At a glance - South and South East in Bloom

- Large Town/Small City – Category Winner 2004, 2005, 2006, 2007(CofC), 2008, 2009, 2010(CofC), 2011, 2012, 2013, Gold Award Winners - 2006, 2007, 2008, 2009, 2010, 2011, 2012, 2013, 2014
- Country Park Winner – Holly Hill Country Park 2007, 2009.
- Gold Award Winner 2009, 2011, 2012 (Category Winner), 2013, 2014
- Small Park Winner – Sensory Garden of Reflection 2007, 2008, 2009
- Gold Award Winners 2008, 2009, 2011, 2012, 2013, 2014
- Civic Gardens – Silver Gilt Winner 2012 Gold Award Winner 2013, 2014
- Conservation Area – Warsash Common Gold Award Winner 2012, 2013, 2014
- Westbury Manor Gardens – Silver Gilt Winner 2013, Gold Award Winner 2014
- Portchester Crematorium – Gold Award & Category Winner 2014
- It's Your Neighbourhood - 6 Communities achieved awards 2010 & 2013 5 in 2011, 7 in 2012, 4 in 2014
- Hampshire Life Award (Most points in County) 2010, 2011, 2012, 2013, 2014

Fareham in Bloom, is managed by the Council's Horticultural Development Officer, working with the Grounds Maintenance Team and a group of seven volunteers, supported across all departments of the Council and the local business community.



Matt Wakefield – Horticultural Development Officer. Matt has been a Horticultural Officer for the Council for some 22 years and has been pivotal in the success of the Fareham In Bloom, setting up the campaign in 1996. Matt has had a love of plants since the age of 7 which developed into a professional career as a Horticulturalist, training at Capel Manor, Enfield, Writtle College, Chelmsford and the RHS Wisley Gardens He brings a wealth of experience and knowledge to the group, leading the team dealing with landscape, horticulture and community engagement for the Parks Department with Eight consecutive Gold Medals and Champion of Champions in SSEIB in 2007 and 2010. He was awarded the honour of Community Champion by Britain in Bloom in 2009.



Heather Othen – Co-ordinator. Heather was a founding member of the campaign. She still supports the campaign by undertaking, with her husband, distribution of our leaflets and flyers around the Borough and assisting with the events.. In 2008 Fareham Borough Council granted Heather the accolade of Citizen of Honour for her work for Fareham in Bloom.



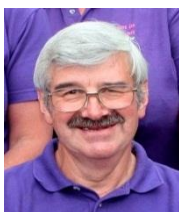
Pam Chisham – Co-ordinator. Pam's background is Allotment gardening and she is the liaison officer for the allotment sites. She organises the administration and paperwork of the competition and oversees the judging arrangements along with working with local schools helping children to garden and grow their own vegetables. Pam was awarded "Citizen of Honour" by the Council in 2010 for her work with "In Bloom" and the Allotments Association.



Jean Kingdom – Co-ordinator. Jean is a previous participant and winner of the garden competition for many years. She is an active member of the group and organises the Gardens Open Scheme (this is now in its tenth year), liaising with the participants, arranging the publicity and answering public enquiries and also works within local schools. She supports all our activities playing characters as part of the themed events programme.



Bridget Thickett - Co-ordinator. Bridget and her husband are previous winners of the garden competition and host the annual 'In Bloom' garden party. She is very artistic and has a strong eye for detail She designs and prepares over thirty table flower arrangements for the annual presentation evening. Bridget is involved with all aspects of the "In Bloom" and makes use of her expertise in judging Schools and Neighbourhoods for South and Southeast in Bloom.



Geoff Thickett – Co-ordinator. Geoff is both practical and technical support to the team and looks at the strategic elements of the groups work including IT, presentations and production of the annual Portfolio. He also designed and maintains the Fareham in Bloom website. He undertakes talks to local societies about Fareham in Bloom and is a judge for South and Southeast in Bloom. He also is actively involved in gardening and planting projects across many sites.



Heather Scott – Co-ordinator Heather has been active in the community for many years. Her expertise comes from working with young people, giving freely of her time. She works with 140 pupils in class and gardening clubs, manages the school grounds and has established gold award winning gardens at Portchester Junior School for the last 15 years. She has great organisational ability which is put to good use throughout the year with events such as the Easter Egg Hunt for 450 children. She was awarded the Citizen of Honour in 2011 for this work.



Pete Othen – Co-ordinator. Pete (Heather's husband) has been a long-time supporter of Fareham in Bloom. He has, this year, become an integral part of the team bringing with him many years' experience of supporting Heather with all she has done for the team. He assists with events and the distribution of literature etc. to garden centres and community centres. Pete is also very valuable in promoting the local gardening challenge and gaining entries for it from the Borough.

HORTICULTURAL ACHIEVEMENT

Horticultural Practice



Council gardeners preparing ground for bulbs

The Grounds Maintenance “in house” team’s primary function is to maintain and enhance the public spaces of the Borough, ensuring that these are clean, tidy and well maintained. They also ensure the highest standards of horticultural and fine turf excellence with a skilled and dedicated staff.

Highways verges hedges and Motorway links are maintained on behalf of Hampshire County Council and cut on a continuous cycle between March and November. The verge cutting carried out by the Council ensures all the Borough is cut around twelve times a year in line with good horticultural practice. Weeds are sprayed on an ongoing cycle to ensure the kerb edges and pathways are kept clear.

Sustainable Planting

A balance between seasonal and permanent planting is maintained by utilising a diverse range of species throughout the parks with increased use of herbaceous and woody perennials as well as floral bedding schemes. These are situated at prime locations such as gateways to the Borough, town centre parks and highways. We have also introduced the use of carpet roses in a number of locations which is proving very promising.

Organic manure is used twice yearly on the annual floral beds along with advanced polymers which are added to reduce the need for watering by up to one third, and watering of the baskets and troughs is carried out in the early hours to reduce transpiration. Bedding, which is only chosen for the most prominent positions and sponsored locations, is grown using a 30% reduced peat product. Traditional composting methods are used along with farmyard manures and “Pro-Grow” – the compost made from recycled garden material collected from 30 Hampshire Recycling centres. Mulches of manure, composted or ornamental bark are used in all parks and gardens to help with weed suppression but also to enhance to the look of the planting.

Bringing diversity into our planting

Over the last four years we have concentrated our planting and landscaping on bringing more diverse schemes into our parks and green spaces with the addition of traditional herbaceous borders, rare and unusual plant collections, carpet roses and wild flower meadows. When the opportunity arises to do something new we look at what we can add to increase the plant collections and what will give a wider season of interest.

At the Civic Gardens and entrance to Civic Way, new herbaceous and mixed borders with plants chosen to provide interest throughout the seasons are under planted with Alliums and Eremurus have been planted, along with a raised bed featuring a summer long display. A collection of unusual palms to complement the more formal displays have also been added.



New Herbaceous Bed in Civic Way

Westbury Manor Garden has undergone replanting with sweeping herbaceous borders, a new lawn and a collection of hardy Fuchsias donated from a local nursery.

Dry and Low Maintenance Planting Schemes

All planting needs to be balanced and relevant to the situation and 'dry' is just one of many types of lower maintenance schemes that we have. They have proved to be very successful and certainly have limited need for attention with just two visits a year for shaping and trimming with rubbish removal on a needs basis should it occur.

The support of our business sponsors has enabled us to put a new and exciting display on the roundabout at Park Gate where low level colourful permanent species have been chosen and under planted with summer flowering bulbs.



Park Gate Roundabout



Wallington Hill Dry Planting

A low maintenance scheme has also been planted on Wallington Hill as well as the entrance to the Civic Office. These comprise plant material predominantly from hotter climates with strong architectural foliage colour and shape with the addition of many unusual and collectable species.

An extensive scheme has also been carried out this spring at the Quay street roundabout where the roundabout and its surrounds have been totally re-landscaped following the Tesco's development to provide a stunning gateway to the Borough.



Quay Street Roundabout

Further schemes are also planned for the bypass in Stubbington, a roundabout at Park Gate and Park Lane Recreation Ground.

Horticultural Resource Management

In order to conserve water we use a product called "Terracotem" in all our floral beds. This is an advanced polymer which acts both as a soil conditioner and a water retentive. Since starting to use this product water use on the floral bedding has been reduced by around a third. There is a policy in place to reduce the use of peat based products. All products used are from sustainable sources with the only peat now used being in the production of floral bedding plants but this also is 30% reduced peat compost. In maintaining the soil quality of the floral beds we only use recycled manure and organic fertilisers such as blood fish and bone meal. Additionally all pots in which plant material is supplied are fully recyclable and no polystyrene pots will be accepted.

At a glance - Horticultural Practice

- *A team of 40 full time gardeners and street cleansing staff are employed*
- *Over 380 hectares of parks, gardens and playing fields are maintained*
- *There are now seven dry and low maintenance planted roundabouts in the Borough*
- *Year on year increase in floral, herbaceous, ground cover roses and wild flower schemes. 470 sq metres of ground cover roses planted.*
- *Advanced polymers used in bedding which has reduced watering by between 20 - 30%*
- *A peat reduction policy has been implemented.*

Impact

Floral displays

Floral displays play a significant part of our seasonal planting in balance with more permanent schemes and are seen as an opportunity to show the design and planting ability of our senior gardening staff. Displays are placed in the most prominent locations in both spring and summer, both in our gardens and on main highway locations where they can be seen by the widest audience. Planted for both spring and summer display the schemes attract sponsorship which in turn offsets the cost of the provision. .



Civic Gardens

Each season we have a theme for our campaign

and this follows through into many aspects of our work including floral display.

The theme for this spring and summer is 'Some Like it Hot' and focuses on the use rich vibrant colours of rich red, pinks and orange set against sunny yellow and gold.

Our passion for parks and horticulture has become very much the fabric of the Borough and to encourage community involvement we once again gave away 20, 000 spring flowering Daffodil Jetfire bulbs for our residents to plant in their own local green spaces which brought a riot of colouring this spring and added to the 4.5 million now planted over the past 24 years.

This coming autumn we shall be giving away 60 sacks of another Daffodil variety and these shall be available from our partner nursery from the second week of September.

Spring floral displays



Delme Roundabout



Sensory Garden

At a glance - Spring Floral Displays

- *Over 4 million daffodil bulbs planted in the last 23 years*
- *7,000 bulbs included in spring bedding displays each year*
- *20,000 bulbs distributed to the public to plant each year autumn*
- *30,000 bedding plants used in the autumn to provide colourful displays through the winter and into Spring*

Summer floral displays

Floral Bedding



Summer Bedding

Summer display is by far the most admired with the palette of plants available ever expanding, giving an opportunity to create some stunning colour and foliage combinations.

We use only the best quality material, adding new and unusual varieties each season to show the highest levels of horticultural excellence from selection through to the high standards of maintenance that they receive.

Barrier and Pedestrian Planters

We have 67 planters placed on the pedestrian barriers along the Borough highways during summer. The nature of the eye level view point makes for a stunning effect, much admired by drivers. We also have 28 planters placed at prominent locations such as car parks and public buildings.



Barrier Planters

Flower Towers and Hanging Baskets



Flower Tower

Each year we place 2 metre high flower towers through the town centre. They attract much attention and positive feedback bringing added height and colour to the town centre for eighteen weeks from June to October. This year there will be 15 towers around the town.

There are 120 pole mounted baskets placed for summer display in the Borough along with 40 on business premises which are funded by the Town Centre and its business.

New baskets in town centre

Following regional judges suggestion we looked at how we could improve the floral display in the main shopping street in West Street and have now added baskets for the summer to each of the 21 lamp posts. This made a great impact to the street scene, softening the harder structural landscape features.

At a glance - Summer Floral Displays

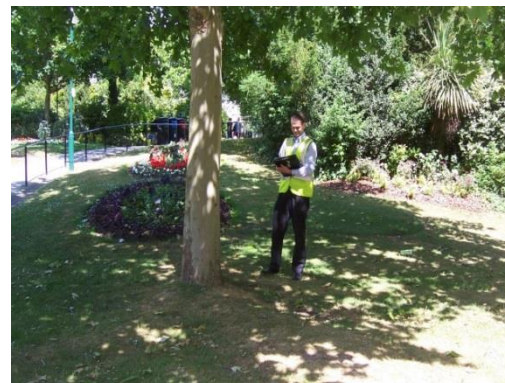
- *32,000 Bedding plants used each summer to create stunning displays*
- *Watering carried out at night to reduce transpiration*
- *67 Barrier Planters and 28 Pedestrian Planters used throughout the Borough*
- *120 Borough Hanging Baskets and 40 Sponsored ones displayed each year*
- *15 pyramid planters placed in the town centre through the summer*

Trees in Fareham

The Council has a dedicated tree team who are responsible for delivering the Council's tree services, which include the management of the Council's trees and woodlands, protected trees, tree safety inspections and tree planting.

Tree safety inspections

The programme of proactive tree inspections manages the health and safety of the Council's tree stock and prioritises remedial tree work identified during those inspections. Tree inspections also inform the annual tree planting programme by targeting areas for new planting and ensuring any tree that has to be removed is replaced. The majority of the Council's trees have been surveyed and their location, species, age class and condition entered into a computerised tree management system. The tree management database links directly to the Council's digital mapping system, which enables tree data to be cross referenced with aerial photography and land ownership information.



New tree planting is an important element of our tree management function to ensure tree cover is maintained for future generations. To ensure the Borough retains its existing levels of tree coverage re-planting must take place continuously. All newly planted trees are maintained until they are established (between 3 - 5 years) depending on the species and planting environment. Several old trees which would normally have been lost have been turned into artistic features by having them sculpted by a specialist tree carver.

Community tree planting

The Council encourages local people to be involved in tree planting and enables residents to request a tree to be planted in a park or open space near them and in local schools as part of the In Bloom campaign. The trees are planted by the Council around National Tree Week each year. The reasons for planting a tree are often very personal but the act benefits everyone in terms of improving the quality of our local environment. The Council offers a range of species to suit any location and residents are encouraged to water and care for their tree to aid its establishment. This partnership working creates an increased awareness of the value and importance of trees within local communities.



At a glance – Trees in Fareham

- *A five year tree strategy adopted 2012.*
- *All Council owned trees are regularly inspected by a tree specialist.*
- *The majority of trees are recorded digitally on a tree management database.*
- *There are 545 Tree Preservation Orders in the Borough*
- *141 trees planted in the Borough in 2014.*
- *600 trees planted across the Borough in the last five years.*
- *32 new trees planted as part of Portchester Park landscaping improvements.*

Residential and Community Gardening

Our Community Gardening Challenge



Large Floral Front Garden

Known as the Community Gardening Competition until this year and now re-launched as the Community Gardening Challenge, this was what, in essence, started our campaign journey 20 years ago and has gone on to become the Fareham in Bloom campaign “Bringing People and Parks Together”.

The idea is ‘to encourage people to take a pride in their environment and improve the Borough by planting bright and colourful planting schemes in their front gardens’

Of course time has moved on and our campaign is now extensive with many community initiatives but the gardening competition (challenge) has always been at the heart of what we do and has allowed us to develop the volunteering network that we now have in place.

Its re-launch this year has focused on new branding, publicity and a revamp of the categories that residents and business can enter as well as revised judging criteria all to make it a better experience for the participant.



Plantsman’s back garden

There are some 20 categories which includes householders, community groups such as those improving small areas of unkempt ground, whole “neighbourhood” streets, sheltered housing complexes, schools, local businesses and allotments and entrants receive discount and promotions with our partner nursery St Margarets.



Courtyard Front Garden

The benefits arising from the competition include:

- Encouraging all sections of the community to become actively involved in the enhancement of the Borough
- Helping raise the profile of parks and open spaces
- Provides a contact base of like-minded individuals to help with Borough projects
- Gives us a list of Gold Standard gardens that we can ask to participate in the Open Gardens scheme to raise funds for charity

A judges steering group made up of the senior in bloom team and a group of trained volunteer judges who are experienced horticulturists, carry out the judging during the first two weeks of July. They undergo training in a similar way to SSEIB to ensure there is a consistent approach to the way each category is assessed.



Small Floral Front Garden



Presentation Evening

The results are announced at a reception and prize-giving which is normally held in September. Awards follow the RHS system of merit awards from Bronze to Gold. Approximately 95% of entrants qualify for Bronze or higher and those not reaching Bronze standard are given a certificate of merit so everyone gets some recognition of their efforts. An award is also made each year for Outstanding Horticultural Excellence to an individual who is considered to have shown substantial horticultural skill and dedication over a period of time.

At a glance - Fareham in Bloom Competition

- *The Gardening competition is now in its nineteenth year.*
- *The Allotment competition has been running for over fifty years*
- *There are around 300 entries in the competition each year.*
- *Entrants get discounts at a local nursery, free plants and promotions*
- *Over 300 people involved with the campaign and attend the Gala Event*

Allotments and leisure gardens

We are very proud of our allotment provision in the Borough and this is an integral part of our “In Bloom” campaign working in partnership with the three allotment associations. Allotment holders are a mine of information and horticultural skills which can be harnessed to the benefit of the bloom.



Typical Allotment



Typical Allotment

A small plot, costs approximately 52 pence per week. All plots are taken and currently there are more than 170 on waiting lists. The council is working on the provision of new sites at Coldeast, and at Daedalus in Stubbington to help address the under-provision of available plots.

At a glance – Allotments and Leisure Gardens

- *One thousand seven hundred plots on ten sites.*
- *Three associations to support the plot holders.*
- *All sites fully occupied and over 170 people on waiting lists.*
- *Three new sites secured for additional future provision.*

Business Areas and Premises

Fareham has many business parks located at Whiteley, Segensworth, Cams Hall estate and the Fareham town centre. These sites are beautifully landscaped with screening to car parks and extensive shrub and tree planting schemes that make them a valuable contributor to the landscape and aesthetics of the built environment.



Local Business Park



Local Cafe Frontage

Shop fronts in Fareham town centre have floral baskets displayed on them and that is supplemented by Fareham town centre management in a similar scheme. The town and village areas also have floral baskets placed on the lamp columns and also containers displayed in prominent locations.

Our community gardening challenge has categories specifically for local businesses to enter and we receive entries from local cafes, hotels, shops public houses and larger commercial frontages.



Local Public House



Local Guest House

Green Spaces

Fareham Borough Council manages over 400 hectares of open space in the Borough and this figure continues to grow. This includes a variety of landscapes including the coastal areas, countryside, woodlands, recreation grounds, nature reserves and informal open space in urban areas. A number of these sites are entered into SSEIB and hold Gold level awards.

Open Space offers an opportunity for the local community to participate in outdoor sport; to walk and play; exercise themselves and their dogs; explore different habitats; picnic and relax. It also provides a variety of ecologically rich habitats for the indigenous and migratory wildlife associated with the Borough. All elements of the “Bringing People and Parks Together” campaign are integrated into the ethos of green space management.

Principal formal parks and gardens

- Blackbrook Park
- Portchester Park
- Locks Heath House Park
- Stubbington Park
- The Sensory Garden of Reflection
- Civic Gardens
- Westbury Manor
- **Park Lane**



Sensory Garden of Reflection

Country Parks

- Warsash Common
- Portchester Common
- Coldeast
- Holly Hill Woodland Park



In addition there are around 114 green spaces and 19 Recreation Grounds

Our beaches and foreshore

The Borough includes considerable coastline on the Solent, within Portsmouth Harbour, and Southampton Water/River Hamble. The coast from the Meon foreshore west to the Hook-with-Warsash Local Nature Reserve and the River Hamble estuary, is included in the Lee-on-the-Solent to Itchen Estuary SSSI, and Special Area of Conservation (SAC).



Sandcastles on the beach

The foreshore and beaches are used for events and environmental study as part of the Fareham in Bloom activities.

At a glance – Green Spaces

- *Over 400 Hectares of public parkland spread throughout Fareham.*
- *12 Principal parks and gardens.*
- *114 other green spaces*
- *19 Recreation Grounds*
- *28km (16 miles) of tidal coastline on The Solent, Portsmouth Harbour and River Hamble*

ENVIRONMENTAL RESPONSIBILITY

Conservation and Biodiversity

Fareham's Countryside Service now established for 12 years has played a vital role in the operational management of some of the Boroughs open spaces and wild areas. Their work is complemented by many volunteers who work alongside them and help to ensure our sites are kept in the best condition for both wildlife and visitors.

Conservation Volunteers

Volunteers are a key component in our site management and the Council is very proud of their achievements. We currently have 6 distinct groups working across the Borough, some groups are site specific, and others cover various sites and help with our programme of encouraging nature conservation in school grounds. Combined we have approx 75 volunteers who join us on a weekly, fortnightly and monthly basis.

Key habitats in Fareham

Over 1900 ha of informal green space and countryside can be found in Fareham, much of which has been given over to the Countryside Service to manage. The range of habitats is considerable and can be summarised by type:

Woodlands:

Fareham has a good number of wooded areas which are retained and managed in accordance with ecological principles which help maximise their biological potential.

The Dry Woodlands are those predominately consisting of an Oak, Ash canopy with a varied understory which may include Hazel, Hawthorn, Holly, Field Maple and Rowan.

Wet Woodlands: Fareham is fortunate in that it has several areas of wet woodland which enhances the Borough's biodiversity significantly. Key wet woodland sites in Fareham include the Alder woodlands at Warsash Common & Holly Hill.



Conservation work in woodland

Grasslands:



Portchester Common SSSI

In Fareham's grassland areas we have a SSSI calcareous grassland community at Portchester Common and small pockets of acid grassland remnants scattered throughout the Borough. Many of our grasslands are foraged/harvested on an annual basis helping to maintain/improve the quality of the sward. Other sites, such as Portchester Common SSSI are grazed and in stewardship agreement to assist with management. A new site has now been adopted at the former Coldeast Hospital site.

Botanical Surveys

Botanical surveys have been conducted at Warsash Common and Tips Copse in line with the management profile for the two sites.

Protected species surveys have been conducted at Burridge Pond and Dibles Pond for the potential occurrence of Great Crested newts which is essential before management takes place at these sites.

Habitat Enhancements



Three different types of natural "boundary" at Warsash

Hedge-laying at The Gillies and Warsash Common last year was successful and it has been repeated and extended throughout the Borough

This year saw the development of a small section of land close to the entrance to Warsash Common off New Road.

The project involved the clearance of ground ivy and the preparation of the soils for planting as a wild flower meadow. Volunteers wattled three quarters of the boundary and then built a wall using three different 'wall' forms (dead hedge, wood stacks and habitat/ pallet stacks).

Management

The management style to key sites takes a systematic approach in line with Fareham's Local Biodiversity action Plan; Further work is planned over the next few years helping to ensure that we have a biological audit of Fareham's wildlife resource within the Borough and appropriate management is in place.

Two new site leaflets have been prepared for Holly Hill Woodland Park and Warsash Common. This is to celebrate their recently acquired Local Nature Reserve status and reflect landscape enhancements

WARSAH COMMON
MANAGEMENT PLAN
2009 - 2019



FAREHAM BOROUGH COUNCIL
www.fareham.gov.uk

1

At a glance – Conservation and Biodiversity

- *Six Sites of Special Scientific Interest (SSSI'S) in the Borough.*
- *Six Conservation Groups with over 70 volunteers giving over 4000 hours' work in past year.*
- *Two National and four Local Nature Reserves within the Borough*

Resource Management

Waste and recycling in Fareham Borough

Fareham Borough Council is working to increase recycling and reduce waste. We are currently recycling over 35% of kerbside household waste.

Almost all our non-recyclable waste is sent for energy recovery in Portsmouth. The plant supplies up to 14MWs of electricity to the National Grid, which is enough for around 20,600 local homes.

Less than 3% of our waste is landfilled; over 97% of Fareham's waste is reused, recycled or sent for energy recovery. Some of the bottom ash from the Energy Recovery Facility is used for road building aggregate.

Recycling

The kerbside recycling system collects paper and card, all food and drink cans, aerosols and all plastic bottles, together in one bin. There are recycling banks for glass, and textiles, books, videos and DVDs. Some flats also have their own glass recycling banks.

Flats present a particular challenge for waste and recycling collections, because there can be little control over people using the bins for the wrong materials. We continue to work with Housing Associations as well as the Council's own Housing teams to provide waste and recycling services.

Garden Waste

A free garden waste collection service is provided to every household for one garden waste sack every fortnight. Residents are able to recycle any additional garden waste in disposable bags, at a cost of £23.50 for 25 bags or £5.75 for 5 bags. The garden waste is recycled into Pro-grow, an organic peat-free soil conditioner.

Trade Recycling

The Council operates WasteSavers, a trade waste collection service, which includes business recycling facilities.

Composting at home

Composters are offered at a reduced price, to encourage residents to compost at home. The offer also includes water butts.

Promotions

Promotion of recycling includes articles in the Council's magazine, Fareham Today. Posters are put in communal bin stores in flats, and stickers placed on bins to ensure residents know what to recycle.

A number of workshops have been run with community groups to highlight the problem of food waste and provide tips and recipes for people to reduce the amount of food they throw away.

The Council is part of the Recycle for Hampshire promotional campaign, which strives to improve the amount and quality of recycling collected in Hampshire. Recycle for Hampshire recently worked with students from Southampton Solent University and the University of Southampton Art School in Winchester.

Two short films were produced about kerbside recycling, and what happens to the materials. This partnership made the most of the Councils' limited resources available for promotions, and provided the students with experience of producing work for a real client.

The films can be used for presentations and in schools, and have been put on the web site.

http://www.fareham.gov.uk/waste_collection_and_recycling/recycling/recycling.aspx

http://www.fareham.gov.uk/waste_collection_and_recycling/recycling/intro.aspx

Local Heritage



Titchfield Abbey

Fareham has a wealth of local heritage sites. Portchester Castle, a Roman castle and the only Roman stronghold in northern Europe whose walls still mainly stand to their full 6 metre height is owned and managed by English Heritage. Fareham's Grounds Maintenance Team carry out the maintenance, grass cutting and general care of the grounds under contract to English Heritage. Also owned and managed by English Heritage is Titchfield Abbey which was founded in 1231 and converted into a manor house in 1537.

Other notable sites within the Borough are :

Fort Fareham. One of a ring of defensive forts known as 'Palmerston's Follies' that were built in Victorian times to defend Portsmouth harbour from an inland attack. The Council maintain the woodland, structure and bio-diversity of this site while the old buildings are used as a thriving trading estate.

Titchfield Haven is a National Nature Reserve owned and managed by Hants County Council. It contains a variety of wetland habitats, some of which have become rare in lowland Britain. The reserve is managed primarily for birds but it also has rare flora and is also home to foxes, deer, dragonflies (19 species have been recorded) and butterflies.

Bursledon Brickworks. This steam driven brickworks was established in 1897. It closed in 1974 and fell into a state of dereliction until 1994 when it was acquired by Hampshire Buildings Preservation Trust who set about restoring it.

Cams Estate. For many centuries this was one of Fareham's most stately residences and a manor house is recorded at Cams Hall as far back as the 13th Century. Early in the 18th century a new mansion was built and today this forms the centre of an extremely successful business park set in the stunning surroundings of a golf course.

Other heritage sites In the Council ownership and managed by them are Holly Hill Woodland Park, Westbury Manor and the modern day heritage site of the Sensory Garden of Reflection.

Holly Hill was originally designed as an estate park and arboretum in Victorian times. It consists of 35 hectares of parkland and open space stretching down to the River Hamble.

Pulhamite Stonework

Holly Hill has what is considered the second best known examples of Pulhamite stonework in the country and its heritage value is significant.

Holly Hill is used by the "In Bloom" group for a number of their activities with the express intention of introducing members of the public to the delights of the park and engaging in the environment.

Holly Hill has held the national Green Flag status since 2008.



Pulhamite at Holly Hill Country Park

Westbury Manor

The house at Westbury Manor was first built in the 1600's, being extended and adapted to its present style during the late 18th century and subsequently during the mid-19th century. A private residence until 1932, it was sold to the Fareham Urban District Council to provide offices which remained here until the new civic centre was built in 1976.

Westbury Manor itself was renovated during the late 1980's and reopened as Fareham Borough Museum in 1990. The building is now Grade II listed.



Westbury Manor garden

The garden at Westbury Manor is the result of detailed cooperation between Fareham Borough Council, Hampshire County Council, Museum Service and The Hampshire Gardens Trust.

The shape of the garden at the rear of the house has changed little from the original but underwent extensive restoration in 1993. In the spring of 2014 the garden was totally replanted to include sweeping herbaceous borders with choice and rare species. The lawns were also re-sown and the paths re-dressed. In May a collection of hardy Fuchsias was kindly donated by St Margaret's Nurseries in Titchfield.

The Sensory Garden of Reflection



The Sensory Garden of Reflection

The Sensory Garden of Reflection is a "modern" heritage site. It was designed and created in 1988 in memory of Princess Diana. Based on the senses of touch, sound, vision, smell and taste this green oasis in an urban setting is packed with rare, unusual and exotic plants from all over the world. The "In Bloom" Co-ordinators have regularly worked in the garden as a "Friends" group maintaining and tidying it. New Palms and a Nectar Bar were added in the spring of 2014. The garden has held national Green Flag status since 2009.

At a glance – Local Heritage

- *Ten principal Heritage sites within Fareham.*
- *Four principal Heritage sites owned and maintained by the Council.*
- *Two principal sites owned and managed by English Heritage.*

Local Environmental Quality



Green Flags

To our great pleasure in July 2008 we were informed by the Civic Trust of our success in gaining our first green flag for the Borough for the Holly Hill Country Park. It is a fitting tribute to The Friends of Holly Hill and other volunteers and their hard work, without which the award could not have been achieved. In 2009 we retained the flag for Holly Hill Country Park and were also awarded a Green Flag for the Sensory Garden of Reflection. Both sites have retained the Green Flags ever since.

Management plans

As well as an annual business plan for all parks and green spaces we have specific management plans for Holly Hill Woodland Park, the Sensory Garden and Warsash Common.

Sensory Garden of Reflection Management Plan 2013-2017



Summary plans of the full documents, primarily for the public and other interested local groups are also produced. Both the summary & full plans are available to download from the Council's web site.

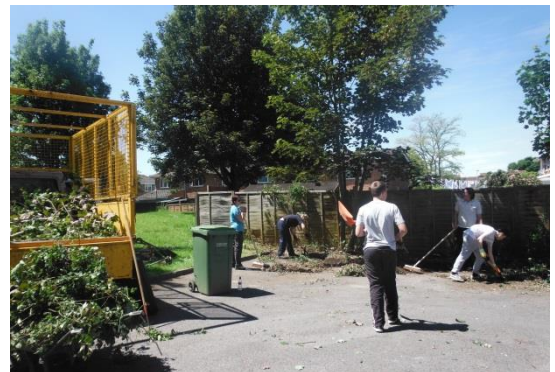
www.fareham.gov.uk/hollyhill

www.fareham.gov.uk/sensorygarden

www.fareham.gov.uk/warsashcommon

Keeping Clean

Fareham Borough Council has an established Cleansing and Enforcement Team to further improve the standard of cleanliness and appearance of the Borough. It is rare to see issues such as graffiti and fly tipping but if encountered this is normally removed within 3 days or 24 hours if it is noted as offensive. The Enforcement Team adopt a firm approach to the enforcement of legislation by the service of fixed penalty notices and zero tolerance to such issues.



Big Clean Up Day

The "In Bloom" team produce flyers and visit vacant properties and those failing to uphold the environmental quality, for example where there is a build-up of weeds or rubbish that is detrimental to the local street scene.

At a glance – Local Environmental Quality

- *Two Green Flags for local parks..*
- *Three site specific management plans for local parks.*
- *Litter, graffiti etc Enforcement Team in place with a zero tolerance policy*
- *Dedicated Cleansing response Team*

Pride Of Place

Fareham is proud of the quality of its hard landscape provision with a number of significant schemes having been implemented to ensure a quality and sustainable landscape with long term strategy for renewal and continuity. Fareham has been operating a programme of environmental improvements for more than sixteen years. The most recent phase in the regeneration of the town centre has seen the former Foundry and redundant steelworks transformed into a major supermarket, and the completion of the extension to the shopping centre. Both schemes include the provision of innovative landscaping and greening of surrounding areas including the public highway

Although new street furniture has been installed, Fareham remains concerned for the environment and all new seating installed in parks over the past twelve years has been made from recycled materials. There is a programme for the replacement of street name plates throughout the Borough. In the past year nearly 400 name plates have been replaced. The new signs include, where appropriate, no fouling, no littering and cul-de-sac symbols.



Other examples of art within the landscape can be found in various parks where ornamental ironwork from local craftsmen has been used to make gates and entrances and also in the town centre (other than the Henry Cort Project) where there is an arch to commemorate the Falklands Conflict and gates in memory of The Queen Mother. The Sensory garden has an Ornamental entrance and ironwork has been installed on top of the low walls surrounding the flower beds to reduce damage to the walls.

The Henry Cort Millennium Project



Sculpture in the Town Centre

The Henry Cort Millennium Exhibition is themed on Fareham's market town history and is the largest permanent exhibition of sculptural ironwork of its type in Britain - the exhibition has been produced by the finest contemporary artist blacksmiths in Europe.

It includes specially designed, handcrafted, puddled wrought iron street furniture, sculptures, performance podium and a water feature.

The Queens Golden Jubilee Gates

The commemorative Queen's Golden Jubilee Gates were commissioned by the Council from Mr Peter Clutterbuck, a local blacksmith artist. They are a unique example of the local blacksmiths work and were unveiled in 2002.



Golden Jubilee Gates

Holly Hill

Holly Hill has a host of ornamental ironwork designs with entrance gate, sculpture and bridges standing proud alongside several examples of chain saw carving from older trees that had to be felled.



Chain saw carving at Holly Hill

Interpretation



Information Board at Sensory Garden

Given the wealth of history at Holly Hill it is important that visitor experience is enhanced to highlight the key features of the site and there are 7 interpretation boards placed throughout the site.

Interpretation Boards can also be found at the Sensory Garden, Warsash Common and Seafield Park.



- At a glance – Pride of Place**
- All replacement park seating in last 11 years made from recycled materials.
 - Ornamental ironwork installed in parks and town centre.
 - Detailed interpretation boards installed at four principal parks and countryside sites.

COMMUNITY INVOLVEMENT

Community Participation

Involving our community in parks

Fareham's success in twenty years of Bringing People and Parks Together can be attributed to the continual development and support of community based projects. These unite and enrich local neighbourhoods and communities with the ethos to protect and preserve the values of green spaces. We are very proud of the diversity of the projects we now work on, built upon the core of the Fareham in Bloom campaign. We work with an ever growing number of people and local groups, which in turn support and enhance the council's services, and allow us to achieve a sustainable and inclusive community.

Working with children to encourage schools gardening has seen outstanding success at our award winning Northern Junior School, where all subjects are taught through the garden and other schools are able to visit and learn from this unique setting.

Events are held throughout the year to encourage active participation in our parks, with a comprehensive Events Guide. These events are aimed to appeal to a diverse community whether their interests lie primarily in green space or horticultural issues, or just to enjoy the fresh air.

We have volunteers as diverse as makeup artists, costume makers and photographers but all have a fundamental passion for making the Bringing People and Parks Together campaign and Fareham in Bloom what it is today.

Main volunteer groups established in Fareham

Fareham In Bloom Co-ordinators Responsible for organising and overseeing the Borough's entries into South and South East in Bloom as well as organising many events to bring people and parks together. There are seven senior members and around 45 support volunteers who also run the local gardening competition and assist with lessons on gardening and conservation in schools.

Holly Hill Volunteers Working with the Council to preserve and enhance Holly Hill Country Park. The group at Holly Hill work with the rangers to carry out practical tasks every Friday, organise events and help in patrolling the extensive woodland.

Fareham Conservation Volunteers Meet Tuesdays and Sundays to carry out practical conservation work around Fareham. Volunteers work in small supervised teams. Many volunteers are very skilled in rural land management and are able to tackle anything from fencing, boardwalk construction, habitat restoration and wildlife surveys. We consider it vital that they have an active voice in the management of our sites.

Friends of Warsash Common. The Friends of Warsash Common are a group of dedicated local people that assist a ranger on a weekly meeting with the practical conservation tasks and ecological surveys.

Whiteley Conservation Group. A group of regular users of Whiteley Woodlands. The Whiteley Greens Group involves people in construction tasks, biological monitoring and assisting at public events.

Coldeast Group A newly established group at the former hospital site assisting with grassland, woodland and pond management.

The Fareham Society. The Fareham Society has two on-going projects that are accomplished through the dedicated work of our volunteer Society members: The Gillies open space near the centre of Fareham and the annual Beach Clean at Hill Head. On average 8-10 volunteers come along to each of The Gillies Work Days. Work groups are led by one of Fareham Borough Council's Countryside Rangers. Around 30 volunteers take part in the annual Sunday-morning event, in which a mile of beach is cleared from Meon Shore to Brownwich, with the help of volunteers from the Titchfield Haven National Nature Reserve.

The Friends of the Sensory Garden. The group has established from the Fareham in Bloom team who, with the help of other community members, work with the Council to ensure the garden is maintained to the highest standards and uphold its Green Flag status.

At a glance – Volunteering in the countryside

- *Between 75 and 100 volunteers regularly working in the countryside and woodlands.*
- *Over 10,000 hours of work carried out by volunteers each year.*
- *Value of time given equates to £73,500 value per annum (based on a day rate of £50)*

Involving our community throughout the year

Our aim is to encourage active participation in parks and horticultural activities for the long term benefit of the residents and visitors to the Borough.

To this aim we organise a variety of events throughout the year, for adults and children, in a number of parks and other venues in the Borough, making the best use of our parks and open spaces.

In July last year we once again arranged for seven award winning gardens from our local competition to be open to the public on one day. Over 300 people visited some or all of the gardens. The intention of this is to inspire local residents and enable them to gain ideas and advice on what can be achieved in their garden.

In August 48 people enjoyed “Tea in the Town” which consisted of a walk and talk by the Horticultural Development Officer in Westbury Manor Garden in the town centre followed by a cream tea served by volunteers in Victorian costume.

October found children (and adults) gathering at Holly Hill for the annual conker championship run by the Friends of Holly Hill.



Tea in the Town at Westbury manor Garden

The night of Halloween was marked by two night time walks, led by a psychic investigator, through the green spaces and waterside of the town centre, where stories of unexplained happenings and legends were told to a fascinated audience.



Sowing a wild flower meadow event

In March we held our annual Fareham in Bloom launch event at Fareham Shopping Centre where we gave 2800 seed packets to passers-by and raised awareness of our work.

In April members of the public, assisted by the In Bloom Team, helped to sow a new meadow area at Hillson Drive. The event was sponsored by Fareham Shopping Centre and the seed mix was created from the winning design of last year's meadow themed children's art competition.

The annual Easter Egg Hunt also took place in April when 450 children plus their parents and relatives followed clues around the Holly Hill Woodland Park enjoying not only the activities provided, but the lovely location.

In May we held a workshop at St Margaret's Nurseries titled 'The Hanging Gardens' where there were demonstrations on the planting on baskets and containers. Attendees received discounts, free plants and practical advice.



Easter Egg Hunt

A fun filled morning entitled 'Natures Detectives' was also held in May by the countryside rangers at the recently acquired Coldeast site. The event for children looked at the local wildlife and mini-beasts as well as the shapes and textures within natural environments.

Future parks events planned for the remainder of 2015

- **11th annual Open Gardens event** - visit seven gardens open for charity this year.
- **The Golden Gardens** - an afternoon looking at three of Fareham's gold award winning town centre gardens with a horticulturist who will speak about these important green spaces, their design, maintenance and plants used.
- **Fairy Tales and Folklore** - an autumn walk to learn about some of Britain's oldest trees and their links with the past with traditional folklore stories attached to our favourite trees and showing some of their ancient uses.
- **Basket Weave Workshop** - learning the art of making a traditional style trugs using only hedgerow materials, such as hazel, willow and ivy.
- **Chestnut Challenge** - The annual Conker Championship for children at Holly Hill Woodland Park.
- **Witches in the Woods** - a Halloween walk in the woods with age old legends and spooky history and night time activities of the paranormal world.
- **The Holly and the Ivy** - Join the staff of St Margaret's Nursery for a festive workshop with demonstration and hands on practical advice.

COMMUNITY PARTICIPATION AND SPONSORSHIP June 2014 - May 2015

	No. of events or work days	Number of people organising	Attendance figures over the year	Annual Volunteer hours given	*Value (based on a day rate of £50 and 7 hr day)
Fareham in Bloom Coordinating Team					
Working group sessions	45	7	315	1575	£ 11,250
Events in parks	10	7	70	490	£ 3,500
Community work projects	24 days	4	248	723	£ 5,164
Photographer	20 days	1	20	142	£ 1,014
Events support volunteers	12	42	588	882	£ 6,300
Development and Continuity Groups					
Friends of Holly Hill (each Friday)	48 days	9	432	2592	£ 18,514
Friends of Warsash Common	12 days	10	120	720	£ 5,142
Fareham Conservation volunteers	22 days	8	176	1056	£ 7,542
Educational activities					
Love Where You Live. Beach cleans and litter picks	12	32	133	572	£ 4,085
Northern Jnr School garden work days	42 days	5	210	882	£ 6,300
Other school gardening days	7	3	21	126	£ 900
Promotional days, displays, talks	13 days	5	65	390	£ 2,785
Leaflets and promotional distribution	9	2	18	144	£ 1,028
Wider Community participation					
Play sessions in parks June 14 - May 15	30	2	210		
5 RHS Its Your Neighbourhood's	11	35	385		
Parks events for young people	5		370		
Fareham in Bloom competition entries	1		203		
11 Horticultural/Allotment Societies in the Borough	110		2110		
Seasonal community activities -Spring					
Easter Egg Hunt	1		803		
Fareham Gardeners' Fairs	2		3800		
FIB launch event	7 days		2800		
Going Wild meadow event	1		28		
Summer					
Summer events programme	4		230		
children's art competition	1		220		
Open Gardens event - 7 gardens	1		382		
Autumn					
Community bulb planting events	18		142		
Halloween events	2		72		
tree events	7		158		
Funding and Sponsorship					
Volunteer time conversion *					£ 73,528
Fareham Borough Council budget					£ 5,000
Travel sponsorship value					£ 400
Art competition funding					£ 2,000
income from ticket sales					£ 3,800
Commercial companies - roundabouts					£ 16,000
Benefit in kind, printing, prizes, plants, hosting					£ 5,200
Fareham in Bloom sponsorship					£ 1,850
Project sponsorship					£ 5,000
TOTAL	477	172	14329	10294	£ 112,778

Open Gardens event

We will be holding our “Open Gardens in Fareham” event again this year involving seven of our award-winning gardens. This popular event raises money for charity as well as raising awareness of our gardening competition. It provides the opportunity for people to see what can be achieved, and to go away inspired with ideas for their own gardens. This was started in 2005 as a one off event but it was so successful that we decided to make it an annual event which to date has raised over £20,000 for charity.



Visitors at an “Open Garden”

Last year seven gardens opened on Sunday 27th July where visitors viewed a variety of different style of gardens including, two wild life gardens, a tropical garden, and several small town gardens. Many of the gardens sold plants and refreshments with all the profits going to charity. The profits were shared between a Horticultural Charity, the Mayor of Fareham’s Charities and Fareham in Bloom to help fund other events

At a glance – Open Gardens Scheme

- *Annual event now in its eleventh year.*
- *Twenty-five different gardens have been involved in the scheme over ten years.*
- *50% of proceeds to Mayors charities in ten years*
- *Over 300 visitors attended the event last year*

Education in schools

Environmental education - encouraging children

To encourage active participation in Fareham in Bloom by schools, children and teachers we encourage the use of outdoor space as an extension of the classroom. Projects are arranged to work closely with schools to set up gardens and after-hours gardening clubs.

The Fareham in Bloom team offer custom made gardening and environmental packages in line with the national syllabus, key stage skills and learning packs such QCS. These are held throughout the spring and summer months and there is a competition for the best schools grounds as part of the Fareham in Bloom Competition.



Vegetable Plot at local (Wicor Primary) School



Demonstration Garden at Northern Junior School

A Demonstration garden has been set up and is now strongly established at the Northern Junior Community School. The garden is planted and maintained by the pupils. This school has been used as a base for teachers to visit to learn the benefits of gardening as part of everyday life in schools. This garden has seen visits by schools from as far away as London. Members of the Fareham in Bloom team regularly visit this school to work with the children as part of their lessons in the school gardens. In addition the team members assist in maintaining and developing the gardens for the children's and parent's pleasure.

Portchester Northern Junior Community School has been very successful, not only in the local gardening competition but also in South and Southeast in Bloom winning their category with gold awards on many occasions and gaining a gold award in Champion of Champions in 2014.

Wicor Primary school another outstanding entry with excellent educational gardens also won gold and become overall Hampshire county winners in 2014.

There are also 3 other schools that participate in gardening and enter our own schools grounds category of our community gardening challenge..

Community Action Teams (CATS)



Portchester Northern's Allotment Area

At a glance – Education and schools

- *Demonstration garden set up with help from "In Bloom" in a local school.*
- *Structured horticultural lessons at 5 schools.*
- *School grounds category in our local competition.*
- *Free seeds, bulbs and trees available to schools*

Community Action Teams, better known as CATS allow the community to have their voice at meetings set up throughout the Borough which help to ensure that the Council have a better understanding of the needs of Fareham residents and communities. Sums of money may be applied for by local communities to enable them to improve their own local environment. Much of the funding that is granted is for environmental improvement projects, local "In Bloom" initiatives, landscaping and new street furniture.

The Going Wild project

Wild flower meadows have become very much a hot topic nationally, with ever diminishing reserves from the result of intensive farming methods.

In turn this has had a big impact on Bees, Butterflies and general insect populations with the lack of pollen and nectar rich species available



Fareham has many naturally rich sites, local nature reserves and chalk down land but this in itself doesn't address the vast amount of green space that is managed in a formal manner with little or no provision to sustain local biodiversity.

In 2012 we decided to address this and look at more sustainable approaches, increasing the diversity of our planting with herbaceous and meadow style schemes.

'Going Wild with Fareham in Bloom' was born and started with an initial four trial sites sowing native annual and perennial species. This proved immensely successful and touched the hearts of the community more than we could ever imagined.



Sowing a new Wild Flower Meadow at Hillson Drive in April 2015



Wild Flower meadow at Linden Lea

Social media played a big part and we were inundated with positive response and support for the new approaches we were taking.

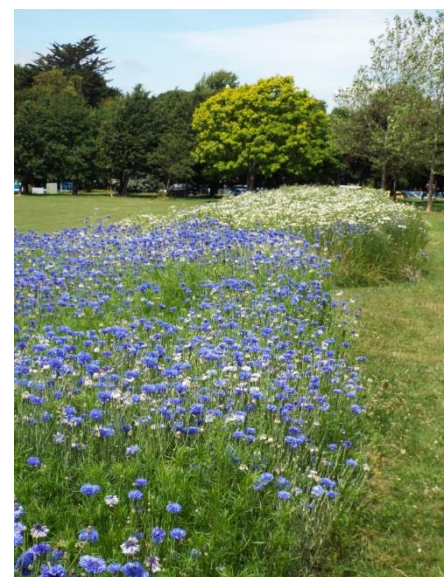
We were so encouraged by the project that we decided to take the idea on in a big way and have extended the scheme to 11 locations with around 9000 square metres sown and further locations planned for the coming autumn.

Sites now planted include our 'BIB It's Your Neighbourhood' entrants, parks, highway verges and

roundabouts.

Fareham Shopping Centre also kindly agreed to sponsor 5000 wildflower seed cards for 2015 which were given to the community to encourage people to sow and grow in their own gardens and commemorate 20 years of Fareham in Bloom.

The subject in itself is, as we have discovered, rather complex and a lot of study and trialling needs to be done. We now have both Native and European mixes chosen to be suitable to a location, so as not to affect the local species profile in any way. What is clear is that the addition of non-native mixes attracts far more wildlife and in terms of floral impact gives longer season flowering and a vast palette of colour schemes to choose from.



Stubbington Park Wild Flower Meadow

Park Lane Vision



Park Lane is an historic open space on the edge of Fareham Town centre, adjacent to the Leisure Centre. Covering a vast area of around 10 hectares the site is in the process of an exciting development plan which will turn the open space into a multi-use site. There is now a new skate park, play area, outdoor gym along with football pitches, tennis and volley ball courts to follow.

To connect the facilities and extend the horticultural provision there are major plans for new and existing parkland with extensive arboretum, woodland walks, community orchard and Piet Oudolf inspired naturalistic planting.

It is hoped that work will commence in the autumn. Once completed the site park will be entered into SSEIB parks awards.

Love where you live

To support this national initiative we are helping groups that are actively involved in carrying out regular litter picks in the Borough by the loan of equipment and arranging for the litter they collect to be picked up.



For 2015 a 'Big Tidy Up' was organised in May where local groups arranged litter picks, clean ups and planting sessions.

In central Fareham the local SkillForce group worked with the Council to carry out activities such as painting, planting and general tidying of the area.

Children's Art Competition

Fareham Shopping Centre are a principal and much valued sponsor to our campaign and have for some years, amongst many other projects, funded an arts competition.

This has a gardening theme and is a great way of getting children interested in the environment. Last summer 500 templates were distributed to schools and community facilities across the Borough to encourage both artistic skill and involvement by children across a range of ages. The winners received art based prizes from the 'Works' and they were presented with their prizes at our annual gala evening.



The Winners with their pictures

For 2015 a new theme to tie in with our rich coastline habitats will see the winning child's artwork turned into a new meadow within the Borough for 2016 and artwork used to promote next year's campaign.

Communication and Promotion

Interaction with the media – publicity awareness

The Council and volunteer co-ordinating group are proud of the quality of the publicity materials produced along with the approach taken in order to raise awareness and encourage active participation in both the campaign and the wider community involvement within parks and green spaces.



“In Bloom” team promotion

We take every opportunity to work with the local media with the invaluable help of the Councils communications team that produce regular press releases which in turn generate articles in The Portsmouth News, The Southampton Echo or on local radio stations. Magazines such as Solent Life, the Fareham Society newsletter and Forget Me Not often feature articles on our work. Examples of our Press coverage are shown in Appendix 1

Each year we produce high quality colourful literature, posters and guides covering all aspects of our service provision. These are distributed to our local libraries, garden centres, community buildings, tourist information centre and all 45 Borough notice boards



Two promotional days were held in April and May 2015. The first at Fareham shopping centre, when free seeds were given out for a whole week to shoppers to mark our 20th year of in Bloom and the second at our sponsor St Margaret’s Nurseries where the team were on hand to give out the new gardening challenge leaflet and free Fuchsia plants whilst visitors watched the staff at the nursery demonstrate how to create an array of summer baskets and container displays.

The Borough magazine Fareham Today features articles in each edition to profile parks and the campaign as well as specific parks subjects to engage participation, educate and develop awareness within the community.

We have a website www.fareham.gov.uk/parks with all of the relevant information on the Borough’s activities including interactive online forms, giving the ability to enter our competitions or make an enquiry online.

The in bloom team have now created their own website at www.farehaminbloom.com. Along with a new supporting leaflet and promotional material the site features the latest news, events and images from around the Borough. Take a look at www.farehaminbloom.com.

Sponsorship and Funding

Despite the current financial difficulties we are all experiencing we are fortunate that the Council's front line services have not been hugely affected and we are still able to enjoy a good standard of parks and cleansing services. Coupled with the long established business relationships we have in place then we are still able to sustain and develop the campaign with the dedication of the wide and varied volunteer network we have in the Borough.

Naturally sponsorship comes in many forms, be it financial or from the various forms of benefit in kind. Now in our seventeenth year we have built a firm base of sponsors who assist in the funding of both the campaign as well as the provision of floral and landscaped roundabouts.

Fareham has eleven floral and landscaped roundabouts throughout the Borough which as well as enhancing the highways with colour and interest throughout the seasons offers businesses a positive promotional opportunity to raise awareness of their services whilst supporting a well respected and established community campaign. A new website page and online enquiry form has just been set to provide potential sponsors with detailed information on the scheme.

www.fareham.gov.uk/council/departments/leisure/parks/sponsorroundabout

The Fareham Tourist Information Centre has been very supportive of Fareham in Bloom for many years and although unfortunately now closed the staff still help with events and promotion activities.

Ticketing for our event has now been established with a new relationship at Ferneham Hall who now promotes on our behalf to sell tickets for all in bloom events.

As our campaign has developed then so have the business partnership opportunities such as financial support for our Presentation Evening and incorporating a nursery discount scheme for competition participants. As well as significant monetary contributions, benefit in kind from some of our sponsors enables the group to better present what they do in a first class professional manner.

Other Sponsors have input according to their business speciality:

- Lucketts Travel provide all our transport for the regional judging, outings and to take our team to seminars or courses.
- St Margaret's Nurseries provide free plants for entrants into our competition, some school grounds and floral displays.
- Fareham Shopping Centre fund community projects and art competitions and are one of our main sponsors for the campaign.



St Margaret's
Nurseries

fareham SHOPPING CENTRE
at the Heart of the Community

The success of Fareham in Bloom and Bringing People and Parks Together is only possible through the kindness and commitment of all of those who have been involved over the last 20 years. We are sincerely grateful.

We are currently supported by eleven sponsors of roundabouts that help to fund the glorious displays you can see as you travel round the Borough. Our local Gardening Challenge and gala presentation evening and the South and South East in Bloom judging days are also sponsored by local businesses.

Sponsorship of roundabouts scheme

Glanvilles Solicitors

East Street Veterinary Surgery

St Margaret's Nurseries

Whiteley Dental Practice

Biscoes Solicitors

Hambrooks Nurseries

Noon's Estate Agents

Commercial Lighting Systems Ltd

A H Langford Funeral Directors

Fareham Shopping Centre

Vauxhall Motor Group

Sponsorship for our competition and presentation evening

St Margaret's Nurseries

Fareham Shopping Centre

Portchester Memorial Gardens

Lucketts Travel

Sponsorship of Fareham Towns Floral Displays

Fareham Town Centre Management

Ferneham Hall

Sponsorship for the transport of the regional judging tour

Lucketts Travel

Sponsorship of the local nursery discount scheme

St Margaret's Nurseries

PHOTOGRAPHS AND IMAGES

All images and photographs in this portfolio are taken entirely within the Borough of Fareham in the 2014/15 season. They show the wide variety of people that we educate on green issues and in the diverse ways we achieve it and also demonstrate the fun that we have in doing it!

We hope that this gives you an insight into the work that we do and wish you a most enjoyable visit.

Thank you to all those who have so kindly contributed to the production of this portfolio



Portfolio design: Geoff Thickett - Fareham in Bloom Volunteer Co-ordinator

Editors: Geoff Thickett Fareham in Bloom Volunteer Co-ordinator.

Matt Wakefield Fareham Borough Council Horticultural Development Officer

Appendix 1
Examples of press cuttings from the past year

Portsmouth News –SSEIB 2014

Wednesday, July 16, 2014 portsmouth.co.uk

Glorious gardens might secure a gold for Fareham

Judges impressed by standard as they tour schools, homes and businesses

by KIMBERLEY BARBER
Fareham reporter

Judges took a tour of Fareham and visited some of the borough's most glorious gardens as part of an annual competition.

Fareham Borough Council has achieved gold status in the South East in Bloom awards for the last 10 years.

Executive member for Leisure and community Councillor Councillor Hockley said she hoped to make it 11 years in a row.

Cllr Hockley added: "This is a wonderful event and it brings the community together."

"All of the gardens are good and look different. It makes me feel happy and very proud. I look forward to it every year."

Judge Susan Smith, from Poole, and Derrick Donnison-Morgan, from Winchester, were taken on a tour which ended in a garden party at the house of Bridget and Geoff Thickett, of Pine Walk, Sarisbury.

Mrs Smith, a retired parks and community officer at Bournemouth Borough Council, said she was particu-



GREENERY From left, judges Susan Smith and Derrick Donnison-Morgan with Bridget and Geoff Thickett in Fareham
 Picture: Ian Harpreese (04201-1)

larly impressed with the wild meadows that have been planted around Fareham.

She said: "Fareham is very impressive."

"There is so much planting that's been happening."

Mr. Donnison-Morgan, a retired horticultural lecturer from Sparsholt College and a professional associate from the Royal Horticultural Society, said: "It is a very tidy place. Everything has been wonderfully organised."

He said he particularly liked the visit to Northern Junior School, in Richmond Place, Portchester.

Mr Donnison-Morgan said: "The school was lovely and it is good to see young people involved with horticulture and with the community."

The results of the SE in Bloom contest will be announced on September 17.

More than 400 communities entered this year's contest.

Fareham is in the large town/small city category and is competing against Salisbury and Crawley.

Praise must go to our gardeners

BY SEAN WOODWARD
Fareham Borough Council leader

I AM proud to say that once again the hard work of Fareham Borough Council officers and local volunteers has paid off at this year's South and South East in Bloom awards.

The borough received the highest achievement of Gold in the Small City category.

That makes it an incredible 11th consecutive win for Fareham now and shows the dedication and enthusiasm that our volunteers and officers put into making Fareham an attractive place in which to live.

Holly Hill Woodland Park, pictured, Warsash Common, The Sensory Garden, Civic Garden, Westbury Manor Garden, and Portchester Crematorium grounds all received Gold Awards.

I'm sure that residents will agree that the flowers and horticulture around Fareham makes it a much more pleasant and enjoyable place for us to live, work and visit.

Two of the borough's schools were also recognised.

Wicor Primary School received Gold and Hampshire County Winner, and Northern Junior Community School received Gold as Champion of Champions, with an overall win in the region. It's refreshing to see the younger generation getting involved and learning about the environment whilst getting their hands dirty.

Local residents were also honoured at Fareham's very own awards ceremony last month, in which many green fingered residents received awards for their glorious gardens.

I know there are detractors who do not feel that in Bloom is worthwhile but they are in my view wrong and do not see the joy on the faces of the partici-



pants when their efforts are recognised. Nor do they appreciate the fantastic community spirit involved among hundreds of volunteers of all ages.

It never fails to amaze me how beautiful the green spaces and gardens look around the Borough, and for that I would like to say thank you to all those involved.

I'm sure I'm not the only resident that is grateful for the wonderful job they do throughout the year.

16 | FAREHAM AND GOSSIP | portsmouth.co.uk Tuesday, September 30, 2014

COMMUNITY

Fareham community news

MAYOR'S VIEW

Hard work of all our gardening teams is to be celebrated



FOR 11 years now, Fareham Borough Council and volunteers have worked together to produce and promote some of the most glorious green spaces in Hampshire.

I am proud to learn that, once again, their hard work and creativity has been recognised at the regional In Bloom awards.

Our team in Fareham are a perfect example of what the In Bloom campaign is about.

Not only do they grow incredible flowers but they work together to make lasting improvements to the local community through making neighbourhoods look beautiful, increasing awareness of the environment, and practising sustainability.

The In Bloom judges must have agreed, Fareham was awarded its 11th Gold in the small city category at the regional awards ceremony held at Brighton & Hove Albion's Stadium. Gold awards were also given to Holly Hill Woodland Park, Warsash Common, The Sensory Garden, Civic Garden, and Portchester Crematorium grounds.

The borough scored the highest mark in the county, a win made possible by the individual efforts of residents who work so hard to grow and maintain their horticultural displays and qualify for their own RHS awards.

These residents were honoured at Fareham's own award ceremony held at Ferneham Hall.

I was pleased to present many of them awards in a wide range of categories.

I also had the chance to meet many of the Fareham in Bloom volunteers.

It is their hard work and enthusiasm that help make Fareham's green spaces, not only competition winners, but a pleasant place to visit, live, work and visit.

I'm sure I'm not the only resident grateful for the amazing job they do.

Cllr David Norris says those who help make the borough a brighter and more colourful place to live deserve their 'in bloom' awards

Portsmouth News – Results of Schools Judging
SSEIB 2014

Wednesday, August 20, 2014 portsmouth.co.uk FINAL | 35
NEWS



DIGGING IN
Members of HMS Collingwood help out the young gardeners



ACCOLADE Blue Peter presenter Chris Collins, left, and public affairs manager at Southern Water Andy Shaddick, right, present pupils at Northern Junior Community School with their award

Budding schools scoop awards

by FELIX MORRIS
The News
newsdesk@thenews.co.uk

TWO schools scooped top honours in a prestigious gardening contest.

Over 100 entered Blooming Schools to see whose garden was the best.

Children and teachers were encouraged to grow flowers, fruit and vegetables and create and manage a wildlife conservation area.

The blossoming young gardeners, from 129 schools, dug deep to grow the finest garden with Wicor Primary School in Hatherley Crescent, Fareham being crowned the best school garden in the county.

The school was presented with a golden award – the highest trophy available – for its outstanding garden.

There was a special category for the school with the greatest garden, called the Champion of Champions.

Northern Junior School in Richmond Rise, Fareham was selected to represent Hampshire in this category for its exceptional garden and won.

It was presented the award by *Blue Peter* presenter and gardener Chris Collins.

It was named as having the best school garden in the south and south east of England.

Top spots in the county and the south in Fareham

The contest was sponsored by Southern Water, which encourages schools to gain a better understanding of the environment.

Andy Shaddick, from the firm, said: 'We've seen an excellent standard of entries into this year's Blooming Schools category.'

'The children's enthusiasm for growing is endless and it's a really important lesson for them to learn in the outdoor classroom.'



DISPLAY Students of Northern Junior Community School show off their award-winning planters

- OTHER WINNERS**
- Solent Infants in Portsmouth (Gold), Newtown CofE Primary in Gosport (Gold), Rowner Infants in Gosport (Silver-Gilt), Leesland CofE Infants in Gosport (Silver-Gilt), Elson Juniors in Gosport (Silver-Gilt), Court Lane Juniors in Cosham (Silver-Gilt), Leesland CofE Juniors in Gosport (Silver), Flying Bull Primary & Nursery in Portsmouth (Silver) and Wickham CofE Primary in Fareham (Bronze).

COMMUNITY VIEW

We're looking forward to garden contest

Vic Styles from Warsash Residents' Association explains his area's plans for the Fareham Community Gardening Challenge 2015

With the spring weather approaching Warsash residents are preparing their gardens and allotments for this year's Fareham in Bloom.

Fareham Borough Council is celebrating its 20th year and it has forged relationships between local volunteers and the council. This year Fareham Borough Council has launched the 'Community Gardening Challenge'.

Warsash residents have great opportunities they have great choice of many various categories.

They can try for their front and back gardens, containers, floral displays including balconies, garden feature of topical and other themes, wildlife gardens.

Warsash has got 80 plots of allotments off the Warsash Road and there are categories for under and over five rods - there is an



FLOWERING Westbury Manor Museum in bloom in previous years

excellent opportunity in this class, there are entries for commercial properties which Warsash do well, there are also categories for schools which include childcare facilities.

The awards are bronze, silver, silver gilt, and gold and there are special prizes for overall winner, which last year Warsash Sailing Club won for special feature, and the Jolly Farmer Inn display

consistently wins gold ever year, perhaps this year will be overall winner for this class.

Entry forms and details can be done online, and there are details in *Fareham Today* Spring 2015 magazine and the form must be no later than Sunday the 14th of June.

Judging will take place in the last two weeks in July, if you have won an

award in a category you will be invited to a ceremony at Fernham Hall Fareham usually in September where the borough prepares an excellent spread.

You will also find details by Googling Fareham Borough Council, and searching for Fareham in Bloom 2015 where you find the full particulars of the competition and online entry forms.

Gardening for Gold

Fareham in Bloom is accepting entries for the annual competition which celebrates the horticultural talents of residents and recognises their contribution to making Fareham a brighter place to live and visit.

Open to all residents, the 20 award categories range from hanging baskets to plantsman gardens, and include accolades for best decorated business premises and best community (street/cul de-sac) floral display. A full list of categories and judging criteria can be found on the Fareham in Bloom page at www.fareham.gov.uk.

All entrants are marked using a point system and entrants can achieve gold, silver gilt, silver, or bronze accreditation in line with the Royal Horticultural Society. Award recipients and category winners are invited to attend a prize giving ceremony in September. Executive member of Leisure and Community, Councillor Connie Hockley told *The Informer*; "The competition is a fantastic way of getting community members involved in enhancing the environment and their local landscape. Their contributions have been instrumental to Fareham's success in the annual Britain in Bloom Competition where we have won numerous awards."

Competition entry is free and each entry will receive a 10% discount card for use at selected nurseries and garden centres. To enter just complete a Community Gardening Competition application form available online at www.fareham.gov.uk or by request from Fareham Borough Council 01329 236100 or e-mail parks@fareham.gov.uk.

informergroup.co.uk JULY 2014 71

Events



DRESSED UP Fareham in Bloom team members in Victorian dress at Westbury Manor Museum, Fareham, from left, Geoff and Bridget Thickett, Heather Scott, and Jean Kingdom

UP CLOSE Matt Wakefield looking at a green echinacea

Tea party promotes blooms

by **KIMBERLEY BARRER**
Fareham reporter
 kimberleybarrer@pmsnews.co.uk

KNEE gardeners and horticultural enthusiasts enjoyed a spot of tea in among the beautiful blooms of a museum's gardens.

A Victorian-themed tea party was held in the grounds of Westbury Manor Museum, in Fareham, and scores of people came along to learn about the garden's flowers.

It was put on by a team of volunteers from Fareham in Bloom, who work with the council to promote and preserve the town's parks and countryside sites.

Matt Wakefield, horticultural development officer at the council, led the tour and spoke about the garden's orange-flowered campsis, green schubness and exotic South American carnas.

Geoff and Bridget Thickett, part of the Fareham in Bloom team, were dressed in Victorian outfits to promote the exhibitions in the museum.

Mrs Thickett, of Pine Walk, Sarisbury Green, said: 'We decided to hold this event to bring people in to see the museum's wonderful gardens. The garden has just been replanted this year and it is a great improvement. It will look even more spectacular next year.'

Friends Gill Cameron and Rene Seaman were enjoying the afternoon.

Mrs Cameron, of Tensing Close, Fareham, said: 'It is such a restful place and the beds are beautiful.'

Each person was given a fuchsia donated by St Margaret's Nursery, in Titchfield.

For more about Fareham in Bloom go to farehaminbloom.com

Victorian-themed event shows off museum's beautiful gardens



IN BLOOM
 From left, Matt Wakefield with Gill Cameron and Rene Seaman

portsmouth.co.uk Thursday, July 3, 2014

NEWS

FULL OF COLOUR Children from Sarisbury Infant School paint wild flowers

Picture: Allan Hutchings (141862-897)

Children grow wild at planting workshop

SCHOOLCHILDREN had a chance to 'grow wild' during an educational day spent at an allotment.

Pupils from Sarisbury Infant School joined residents, council workers and councillors to sow a wild meadow at Allotment Road Recreation Ground, in Sarisbury Green.

A wild meadow planting workshop took place in the afternoon, followed by painting wild flowers.

The children swapped their usual school classroom for the great outdoors to take part in the Going Wild project, run by Fareham Borough Council.

The scheme started in 2012 with the aim of bringing modern day meadows into parks and green spaces to help support wildlife while also producing naturalistic planting.

Executive member for leisure and community, Councillor Connie Hockley, said: 'The Going Wild project has proved very successful, and I'm delighted to see the meadow growing so well.'

Residents were also able to look at and find out about the meadow that has been sown in Allotment Road, as well as receiving free seeds.

'The event was absolutely brilliant and the members of the public seemed to appreciate it. The children were very well behaved.'

by **JACOB YOUNG**
The News

14 FINAL

NEWS

Treat for gardening fans and horticulturists at open day

SEVEN beautiful gardens will be open to the public this weekend to raise money for charity

All have won awards in the annual gardening contest Fareham in Bloom.

Executive member for leisure and community councillor Connie Hockley said: 'I'm always so impressed by the Fareham in Bloom entries.

'I'd encourage people to go along to see some of the stunning gardens in Fareham.

'People work extremely hard on their gardens and it's always great to see the final results.'

Events will be held from 11am until 6pm tomorrow.

All money raised goes towards both Fareham and horticultural-based charities. The locations are: 10 Peak Drive, Fareham, 8 Birdwood Grove, Portchester, 51 Longmynd Drive, Fareham, 11 Brecon Close, Fareham, 20 Titchfield Park Road, Titchfield, 35 Warsash Road, Warsash and 213 Highlands Road, Fareham.

People attending can start at any one of the gardens to begin their tour.

Refreshments and plants will be on sale at selected gardens.

Tickets for the day cost £5 and include entry to all gardens.

To book tickets contact farehamtic@tourismse.com or Jean Kingdom on 01329 314 808.

There were originally eight gardens advertised to visit but one of the gardens has had to pull out; 2 Shenley Close will no longer be available to visit on the day.

Events

Conkers bonkers



STRIKE Ben Schneider, 11, taking aim at the conker of Libby Weller, 10

Picture: Sarah Standish (0429832879)

SCORES of people went to battle in the woods – as part of an annual conker competition. The crowd has a smashing time as around 40 people competed in the Chestnut Challenge at Holly Hill Woodland Park in Sarisbury Green. It is the 11th year the event has been held

and plenty of families and conker fans took part. Brothers Dave Maurie, 54, and Mike Stares, both 67, dressed up for the occasion, and although they came away empty handed, they had a cracking afternoon. Dave, of North Boarhunt, said: "We have gone along for a few years now."

"It's good as it keeps the old tradition going, especially with it being banned in many schools. That's the nice thing about it – it brings the young and old together." The conkers were selected by the Friends of Holly Hill, which managed the event on Saturday.

Free advice for blooming baskets

A FREE hanging gardens workshop will teach attendees how to fashion creative containers as well as blooming baskets.

From 10am to 1pm on Saturday, May 16, the staff at St Margaret's Nurseries, St Margaret's Lane, Titchfield will carry out practical demonstrations which will give step-by-step guidance on how to create a floral piece.

Refreshments will also be available on the day and the first 100 people to arrive will receive a free fuchsia plant.

The event will be held in the glass-house which can be warm so attendees are advised to dress appropriately.

Gardening

The INFORMER OCT 2014

Festive Creations workshop helps to deck your halls



If you've ever wondered how to make your own handmade Christmas decorations you can go along to the Festive Creations workshop at St Margaret's Nurseries, Titchfield on 6 December.

Demonstrations will be taking place in the Nurseries glass house between 10am-1pm. Staff there will help you make perfect wreaths, garlands and table centre pieces from natural greenery and seasonal flowers.

Cllr Connie Hockley, executive member for Leisure and Community, has said: "This festive event has been made possible by Fareham Borough Council's 'Bringing People and Parks Together' initiative, and its volunteers. We often associate Christmas with excessive spending, so it's nice to show people how they can create something handmade, that not only makes a great decoration, but a beautiful gift too."

Tickets are £5, and include all the materials you need to make your decoration. Contact Tourist Information Centre, West Street, Fareham (01329 221342) early to secure your place.

COMMUNITY

Fareham community news

Volunteers are thanked for making Fareham beautiful

by JAMES PARSON
The News

Dedicated volunteers who spend their time making Fareham beautiful have been thanked.

People from horticultural group Fareham in Bloom were recognised at an evening of celebration at Ferneham Hall in Fareham.

Their efforts were heralded as a great success as Fareham Borough Council gave thanks to its hard-working volunteers.

Executive member for leisure Connie Hockley said: "The atmosphere was lovely, there was a lot of friendship in the air."

The event brought the Fareham in Bloom team together for a night of floral merriment.

Cllr Hockley said: "It was an evening to say thank you to all the

Horticultural team's dedication and hard work is heralded at celebratory evening

people who have put their hands up to help. We're very grateful."

Fareham in Bloom launched nearly 20 years ago as a campaign to improve and sustain the environment of Fareham.

In conjunction with the council, the group helps to organise projects in the area.

Matt Wakefield, horticultural development officer for the council, is incredibly proud of the campaign.

He said: "Success is built on success. Things don't just happen overnight."

"Fareham in Bloom was built from nothing and being in its 20th year marks the continuation of its future."

The dedicated group of volun-

teers has won national acclaim for 11 years in the South & South East in Bloom competition run by the Royal Horticultural Society.

Last year, the team took gold for all 14 entries in the South & South East Region.

Mr Wakefield said: "Our success in the contest brings accreditation and pride to the group."

The Fareham in Bloom team has big plans for the future. Three major projects are under way: the wildflower seed project is set to launch 5,000 seed packets to residents on March 16, the Robin Hood themed Easter Egg Hunt on March 28 and the hanging garden event at St Margaret's Nurseries on May 16.



CELEBRATION Pat Sutton with her staff from St Margaret's Nursery in Titchfield

Community news

NEIGHBOURHOOD NEWS

Garden in memory of Diana receives award

by MEGAN THOMAS
The News

A GARDEN in memory of the late Princess Diana has retained a prestigious prize. The Sensory Garden in Fareham – which opened in 1998 at a cost of £50,000 – has again picked up a Green Flag Award.

The garden is set around sensory stimulation, packed with rare and exotic plants from all over the world.

The Green Flag Award Scheme recognises and rewards the best green spaces in the country.

The garden has become very popular since its opening and is used for a range of events including



MEMORIAL The Sensory Garden and the late Princess Diana

organised walks and talks.

On average, the garden receives one day a week maintenance in the summer and half a day in the winter by volunteers.

The Green Flag award is a national accolade that

shows visitors that the park is well maintained and well managed, with excellent facilities.

Councillor Connie Hockley, who's in charge of environmental issues, said: 'I would like to thank everyone

involved for their hard work to ensure we retain these awards in order to provide residents green spaces to enjoy in the borough.'

Holly Hill Country Park in Sarisbury Green also picked up a Green Flag Award.

Conservation Volunteers

Getting to work...



STUCK IN Countryside ranger Helen Sosnowski and volunteer Peter Glasspool removing reeds at Coldeast Picture: Paul Jacobs (143547-6)

CONSERVATION work is under way at a site of a planned £7m leisure centre and swimming pool.

The work is taking place on the 59-hectare site of the former hospital at Coldeast, Sarisbury Green.

Fareham Borough Council has taken

over the site and its countryside service is getting to grips with managing the nature conservation.

The site was originally a country estate with a house, garden, park, grazing land and woodland, until it became a hospital during the 20th century.

In 2012 planning permission was granted for 168 new homes, restoration of the mansion house as a hotel, sheltered accommodation and community facilities, including sports pitches and a leisure centre, which will have a six-lane 25m pool and is due to open in 2016.

Renowned broadcaster and author with more than 50 books to his name
Stefan Buczacki **GREAT BRITISH**
Gardens to visit

Fareham's Sensory Garden of Reflection is hard to beat, says Stefan

VERY GARDENS: I recently found a garden that seemed to me to epitomise the sensory concept. I like it because it is so accessible for members of the public and it has the additional role of commemorating one of this country's most loved individuals, the late Princess Diana. The Fareham Sensory Garden of Reflection lies close to the town's shopping centre and was constructed in 1998 from a simple green patch.



Henry palms dominate the skyline

Find it at...
 Fareham Sensory Garden, Osborn Road, Fareham, Hampshire PO14 2PW, tel: 01253 236595; www.fareham.gov.uk/sensory-garden. Entry to the garden is free and it's open from dawn until dusk.

This is a garden where the plants and other components have been chosen specifically to display other sensory features. In its delightful leafy paths, you'll find all the characteristics the garden's plants display and all the emotions they seek to invoke. There are tactile plants with smooth, hairy and spiky leaves, herbs and scented plants to tantalise the senses and dramatic

structural plants to excite them, plus reflective, calming areas to sit in. To satisfy these objectives, the garden has gathered plants from all corners of the world, especially filled the hot beds, facing the sunny south and packed in summer with tender delights from New Zealand and

the Mediterranean. But to provide all-year-round appeal, there are cooler winter beds and a formal courtyard with hardy palms such as cacti and succulents. Entry is free, there is a picnic area to encourage you to prolong your visit and there are car parks and public lavatories close at hand. What more could a garden visitor need?

Other beautiful gardens nearby in Hampshire



Hinton Ampner
 Visit in autumn to see pumpkins and squashes ready to be harvested in the walled kitchen garden and hundreds of gaities filling the autumn borders. Hinton Ampner, near Alresford, Hampshire SO24 6LA, tel: 01962 771300, www.nationaltrust.org.uk



Winchester Hospital of St Cross
 Discover immaculate gardens inside the tranquil and ancient Hospital of St Cross. The medieval buildings have provided shelter for hundreds of years, alongside the River Itchen. St Cross Road, Winchester SO23 9SD, tel: 01962 878218, www.hospitalofstcross.co.uk



Mottisfont Abbey
 The walled garden includes a collection of old fashioned roses designed by Graham Stuart Thomas. There's also a wisteria garden to enjoy in colder months. Mottisfont Abbey, near Romsey, Hampshire SO51 0LP, tel: 01793 340715, www.nationaltrust.org.uk

44 Garden News / November 2014

Focus on Fareham

Up & coming – Fareham

This historic market town nestles in between two of Hampshire's largest cities: Fareham is renowned locally for its communal atmosphere. Its town centre surrounds a beautifully designed sculpture park, fusing the modern shops and restaurants with images that appear to have been forged in a medieval blacksmith workshop!



However, these sculptures are far from ancient, with the park opening only at the start of the millennium. The Henry Cort park is named after a Victorian blacksmith that settled in Fareham and whose inventions still assist in the creation of modern art and steelwork today!

The models that line West Street have been created all over the world, with contributions from Finland, Germany and as far as Russia. Not only is this town historical, it's international also!

The artworks are featured in the pedestrian precinct that showcases a variety of local independent businesses, with everything from antique shops to fitness centres – it is always easy to find something to do here.

The town centre stretches all the way down West Street toward the train station, an excellent welcome to the town that truly shows off its values. Fareham is dedicated to a community sense, all around you can

see signs of locals affecting the everyday life of the town. It's location bordering the Great Owers lake makes for an excellent walk along the nearby watercourse. Only a short distance from the hub of activity lies the tranquil parks and meadows that make Fareham so geographically diverse.

Amongst these parks there is an award winning Sensory Garden which opened in 1998, which this year picked up a Green Flag Award, a national reward for the park to show visitors that it is well managed and maintained. It was built in memory of Princess Diana and is filled with exotic and rare plants from all over the world.

At the end of the day, after all the sightseeing and shopping, Fareham offers its own entertainment boardwalk, packed to the brim with a cinema, nightclub, gym and restaurants open until late. Fareham is ideal for a whole day out, for the family or for friends. It truly is an up and coming place to be.



56 SEPTEMBER 2014 info@maggroup.co.uk

Wednesday, March 18, 2015 portsmouth.co.uk

FAREHAM AND GOSPORT

COMMUNITY

Fareham community news
Roundabout gets a sprucing up by team of workmen

Major gateway to Fareham undergoes £48,000 replant as supermarket gives up its responsibility

Workmen have been sprucing up a busy roundabout after the supermarket that owned it handed it plus thousands of pounds over to a council.

Quay Street roundabout, a major gateway to Fareham, has undergone the makeover over the last four weeks.

Fareham Borough Council has planted the roundabout with a diverse range of seasonally-changing plants.

Council leader Sean Woodward said: 'It is now looking beautiful, it is an amazing contrast.'

The authority has been allowed to work on the roundabout, after Hampshire County Council took control of it last month.

The roundabout was altered and rebuilt by Tesco as part of an agreement for it opening a large store on Quay Street in November 2011.

The supermarket originally agreed to take responsibility for the highways for two years and the landscaping for three, but it fell into a bad state of repair when this agreement ran out.

Tesco tried to give responsibility back to

by **KIMBERLEY BARBER**
 Fareham reporter

the county council, only for the council to demand that work was carried out to bring it back into an acceptable state.

The supermarket handed £48,000 to the county council, which in turn gave the cash to Fareham to bring it up to scratch.

A team overseen by Matt Wakefield, Fareham's horticultural development officer, has completed the planting.

He said: 'Winter red and fiery orange stem colour set against gold and silver foliage brightens the darker days and will be followed in early summer with flowering herbaceous species, grasses and flowering shrubs extending into the autumn.'

'The site's elevated position has been used to advantage to best display the planting with trees providing added height. These include white stemmed Betula, orange-stemmed Prunus along with Pinus nigra central to the scheme.'

'The work also includes verges of the A27 Western Way.'

A second phase to cover adjacent areas will be carried out in the autumn.



SMARTENED UP Men working on Quay Street Roundabout in Fareham

Parks Events 2015
Bringing People and Parks Together

FAREHAM BOROUGH COUNCIL

Gardens Open Day 2015

Visit 7 of the award winning Fareham in Bloom Gardens. Turn up at any garden to start the tour.

Sunday 26 July, 11am - 6pm

Tickets cost £5 and are available from either Ferriham Hall or the first garden you visit. Money raised will go to charity.

4 Nightingale Mews, Locks Heath, SO31 6GA
A very colourful, steeply sloping terraced garden arranged over different levels. A sheltered gazebo at the top has views of the striking planting, sculptures and roof garden, whilst the lower patio has seasonal floral pots and baskets surrounding the seated areas.

31 Burnham Wood, Fareham, PO16 7UD
A compact plantman's garden demonstrating yearlong interest with a variety of plants chosen for texture and colour, along with ornamental structures and artistic pieces, which add style to the brick edged borders and pond area.

FAREHAM BOROUGH COUNCIL
Bringing People and Parks Together

8 Birdwood Grove, Portchester, PO16 8AF
A small plant collector's garden with a sub-tropical theme, incorporating dramatic displays of both unusual foliage and floral arrangement, through the creative use of artistic structures intended to emulate the jungle outlook.

51 Longmynd Drive, Fareham, PO14 1SH
Large and artistic with many unusual and quirky features, incorporating a diverse collection of plants and succulents, the garden is arranged on a number of levels filled with water features, lawns, containers and artwork. There has been a partial redesign following removal of hedging and conifers, with the addition of new borders and ornamental trees.

213 Highlands Road, Fareham, PO15 5BQ
A compact and intricate garden that includes a patio, dual level decking, a water feature and covered pergola.

The borders are packed with palms, ferns and shrubs along with seasonal and perennial delights showcasing what can be done with such a small space.

35 Warsash Road, Warsash, SO31 9HW
This third of an acre garden has evolved over a 50 year period, with an interesting array of trees and shrubs such as Cinerodendron and Serris, set amongst herbaceous borders, ferns and seasonal floral displays, with a productive allotment area.

20 Titchfield Park Road, Titchfield, PO15 5RW
This family organic garden with pond, lawns, orchard, fruit and vegetable areas provides year round interest, with an emphasis on encouraging, supporting and protecting local wildlife.

Refreshments and plants will be on sale at selected gardens.

For more information please contact Jean Kingdom on 01329 314808. To book tickets via Ferriham Hall please call 01329 231942.

Getting involved

If you would like to make a difference and get involved with our programme of horticultural activities, community and schools gardening we would be pleased to hear from you.

Horticultural Development Officer 01329 824543

Fareham in Bloom community gardening competition
www.fareham.gov.uk/parks

Fareham in Bloom volunteers
www.farehaminbloom.com

Events and event bookings

Fareham Tourist Information Centre, Westbury Manor, West Street, Fareham, PO16 0JJ
Tel: 01329 221342
Email: farehamtic@tourismso.com

South and Southeast England in Bloom
www.sseib.com

Other publications available

- Parks Events Guide
- Gardens Open
- Holly Hill Woodland Park
- Volunteer practical days
- Warsash Common
- The Sensory Garden of Reflection

A copy of this guide can be made available in larger print, on tape or translated.

Fareham in Bloom
Bringing people and parks together

Supporting South & Southeast England in Bloom

FAREHAM BOROUGH COUNCIL

GARDENERS' Fairs

FAREHAM TOWN CENTRE

9am to 3pm
Saturday 10 May and Saturday 14 June

farehamtowncentre.co.uk

FAREHAM BOROUGH COUNCIL

Making a difference

Bringing People and Parks Together is our Fareham in Bloom community environmental campaign. Established in 1998 it aims to protect and enhance our environment whilst encouraging community participation in parks and horticultural activities.

The project is run as a partnership between Fareham Borough Council and a dedicated team of Fareham in Bloom volunteers who work throughout the year to deliver a programme of events, activities and projects which seek to engage the local community.

The work carried out and the achievements attained make a real difference to making Fareham an attractive and clean Borough which in turn creates a sense of pride and place.

Improving the look of the Borough

By planting new and diverse floral and permanent landscape schemes that improve the look and beauty of the Borough along with those that support local wildlife such as the wild flower meadows.

Community Gardening

Working with local residents to improve their green spaces with practical help, advice and cultivation along with trees and bulbs that are offered annually as part of a community planting programme.

Community Gardening Competition

Residents, community groups and businesses can enter into the gardening competition to gain recognition for their efforts with an annual celebration and awards evening held each autumn. Simply fill out the application form.

Schools

We work in schools to support and encourage gardening related projects that engage children and teachers. From 2014 Horticulture will become a core subject as part of the National Curriculum, key stage skills 1-3.

Parks Events

An annual programme of events, horticultural and environmental activities is organised to encourage people into our parks and green spaces.

South and Southeast England in Bloom

We support the regional sector of Britain in Bloom and enter the Borough and individual parks which consistently achieve Gold level awards year on year.

Learn more about our work and get involved:
www.fareham.gov.uk/parks
www.farehaminbloom.com
www.sseib.com

Horticultural Development Officer 01329 236100

Enter the competition

Name/organisation:
Address:
Postcode:
Telephone: home work:
Email:
Allotment site (if applicable) plot no.

You may enter a total of 4 categories in section 1 - 4 only or you can choose to enter one category from section 5. Return to Fareham Borough Council, FREEPOST FM33, Fareham PO15 7ER by June 14th.

<p>Section 1 (choose from three of projects)</p> <p>1a Small floral front garden under 70m² <input type="checkbox"/></p> <p>1b Large floral front garden over 70m² <input type="checkbox"/></p> <p>1c Courtyard/forecourt garden up to 50m² <input type="checkbox"/></p> <p>1d Plantman's front garden - permanent planting scheme <input type="checkbox"/></p> <p>Section 2 (choose from three of projects)</p> <p>2 Hanging or wall basket <input type="checkbox"/></p> <p>3 Container (window box/tub etc) <input type="checkbox"/></p> <p>4 Floral display (including balconies) using any type of basket/ container <input type="checkbox"/></p> <p>5 Unusual garden feature <input type="checkbox"/></p> <p>Section 3</p> <p>3a Small floral back garden under 100m² <input type="checkbox"/></p> <p>3b Large floral back garden over 100m² <input type="checkbox"/></p> <p>3c Small plantman's back garden under 100m² <input type="checkbox"/></p> <p>3d Large plantman's back garden over 100m² <input type="checkbox"/></p> <p>Section 4</p> <p>4a Allotment under 5 rods <input type="checkbox"/></p> <p>4b Allotment over 5 rods <input type="checkbox"/></p>	<p>Section 5</p> <p>5a Local authority non assisted/residential residential home/complex or day care facility <input type="checkbox"/></p> <p>5b Other warden assisted/ sheltered residential home, complex or other housing service provider or day care facility <input type="checkbox"/></p> <p>9 Business premises (including public house) <input type="checkbox"/></p> <p>10 Large commercial landscape <input type="checkbox"/></p> <p>11 Community floral display (your street/ out door, community centre, public service area etc) <input type="checkbox"/></p> <p>12 Schools gardening projects <input type="checkbox"/></p>
--	--

Prizes may be offered on individual plots but we need your authority to display prizes, either in our publications or on our website for up to 3 years, please sign here if this is acceptable.

Thank you.

The personal information you provide will be treated with the strictest confidence and held for a period of not more than 3 years for the purpose of these activities. promotional/ display events and the mailing of associated material. Should you not wish to receive such information, please tick here.

Bringing People and Parks Together

10 years of the top

Fareham has been honoured with its tenth win and gold award from South and Southeast England in Bloom.

At the regional presentation held in Tunbridge Wells on 11 September gold awards were also received by Holy Hill Woodland Park, Warsash Common, The Sensory Garden and the Civic Gardens, while Westbury Manor Garden received a silver gilt award.

This was the fourth year in a row that Fareham has received the coveted Hampshire Life award for the highest marked entry in Hampshire.

In July 2013, Portchester Northern Community School achieved gold and Champion of Champions for their amazing school grounds and educational gardens.

It's your neighbourhood

The Royal Horticultural Society 'It's Your Neighbourhood' campaign recognises community led groups who care for their local green spaces. The Burnham Wood Residents, Sarisbury Athletic Cricket Club, Fareham and Crofton Cricket Club, Northern Ground Force and Fareham Conservation Volunteers were all graded 'outstanding', receiving the highest award of level 5. Broadlaw Walk Community Space achieved level 4, being graded 'thriving'.

The Fareham in Bloom awards were held on 12 September at Ferneham Hall, which recognised and celebrated the efforts of our local community.

Looking ahead to 2014

2014 will be another exciting time with a number of projects across the Borough to commemorate the centenary of the 1st World War and D Day's 70th anniversary.

Following the success of the 'Going Wild' meadows a further five will be sown at the Queen Elizabeth sites of Wicor recreation ground, Seafield Park, Bath Lane recreation ground and Allotment Road recreation ground.

The open space behind the Holy Trinity Church in Fareham town will also have a meadow along with commemorative rose beds, trees and new seating.

Free postcard seed packets of beautiful poppies that can be sown at home will also be available to residents for a fitting personal commemoration. Look out for more information in the spring edition of Fareham Today.



For further information on In Bloom, Community Horticulture and Parks Events please contact: Matt Wakefield, Horticultural Development Officer, 01329 236100.

10 Fareham Today Autumn/Winter 2013 • Tel: 01329 236100 • Email: customerservices@fareham.gov.uk

The Park Lane Vision

Fareham Borough Council is about to start an exciting project; to improve the outdoor facilities at Park Lane Recreation Ground. We want to update the existing facilities and create new ones, and getting your ideas and feedback on this project is really important.

What are we adding?

We will be providing a new children's play area, in a better location with more equipment. We also want to expand the current skate facility, adding features for users of all abilities, including some challenging pieces. Also, we are going to install outdoor gym equipment that will be suitable for all ages, helping to make physical activity more accessible and importantly, free!

We will provide a new all-weather multi-sports facility, to include tennis courts, separate seven-a-side football pitch, and a public pétanque site (pétanque is a form of boules).

Getting involved

The project will be carried out over the next four years. The first two areas that will be completed are the play area and skate facility. We have already had a great response to the proposed improvements from our Facebook followers, and we will continue to consult with as many people as possible, using a range of consultation methods. We will advertise all consultation events on our website, so keep an eye on www.fareham.gov.uk/have_your_say/consultations.

If you would like to get involved in this project please contact Janine Hensman, Leisure Projects Officer on 01329 824593 or email jhensman@fareham.gov.uk

This is a really exciting project that the Council is committing to, and we really want to get it right. So please get involved and give us your views for your vision, and let's make it an area we can all be proud of.



Website: www.fareham.gov.uk • Facebook: www.facebook.com/farehambc • Twitter: @FarehamBC 11

Bringing People and Parks Together

Remember – World War One Commemorations

To commemorate the centenary of the First World War, a number of horticultural projects and community events will be organised this season.

The Holy Trinity Church in Fareham Town Centre is being re-landscaped with the addition of trees, red flower carpet rose beds, seating and a small meadow area, making for a fitting remembrance in a peaceful location. The works started last November and will be completed by July this year.



Meadows

Wild flower meadows have become a national phenomenon in recent years, capturing the hearts of people with their natural stunning beauty and the wild life benefits that come with them. The largest sown in Fareham last season was at Linden Lea in Portchester where it attracted much media attention and was loved by the local community, creating a stunning summer display.

To commemorate those lost in the First World War the project is being extended this year. More meadows will be planted, including at the QE2 recreation grounds at Bath Lane, Wicor, Allotment Road and Seafield Park, along with parks and highway locations.



This year, both annual and perennial mixes will be trialed from native and European species in a host of different colour combinations, with a special poppy and red themed mix sown at the Holy Trinity Church open space.

Meadow style planting can be a challenge with soil types, location and the weather affecting their success. To get our community sowing in their own gardens a free workshop will be held at the Holy Trinity Church open space at 1.30pm on Thursday 10 April when a horticulturist will be on hand to talk about the subject, and free seeds will be available.

For more information on remembrance seeds, Fareham in Bloom, horticulture and parks events please contact:

Matt Wakefield
Horticulture
Development Officer
Tel: 01329 824543

Flanders poppies

The Flanders Poppy is a symbol of remembrance and our residents can take part in their own personal commemoration as we have arranged for individual seed cards, each with its own small pack of poppy seeds, to be provided free at various locations within the Borough. The seed cards titled 'Remember' will be available from March. You'll be able to get yours at parks events, in garden centres, community centres, from the Civic Offices and Fareham Tourist Information Centre or on request.



Carry on Gardening

Community participation is at the heart of the Fareham in Bloom campaign, which some 19 years on, goes from strength to strength. An ever increasing number of residents, local community groups and businesses are now taking part.

Some of our participants have been supporting us since we began in 1996, and over the years we have been privileged to see some spectacular examples of horticultural excellence, which add to the beauty of the Borough.

We are particularly looking to encourage more business entries for 2014 and will be holding a workshop at St Margaret's Nurseries, Titchfield from 10am – 1.00pm on 17 May, when there will be demonstrations, help and advice. The first 120 to attend will receive a free Fuchsia plant, a 20% discount and refreshments.

The competition is open to all residents, schools and businesses within the Borough, with the entries judged during the second two weeks of July. The awards are based on individual merit from Bronze and Silver to Silver Gilt and Gold, with a presentation evening to be held in September at Ferneham Hall.

Each year we have a colour theme, and for 2014 this will be 'Colour in Contrast'. You will see this reflected in this season's floral displays, planters and baskets in a palette of red and maroon shades, and a little blue, all set against white, silver and lime green.

To enter, complete the application form and return it to:
Fareham Borough Council, Parks and Open Spaces,
FREEPOST, Fareham PO16 7BR no later than Saturday 14 June.

Fareham in Bloom Competition 2014

Please print in capitals
Name/Organisation _____
Address _____

Post code _____
Contact tel no. _____
Email _____
Allotment site (if applicable) _____
Plot number _____

Entries must be within the Borough of Fareham and visible from the front or side (except sections 3 & 5). You may enter a maximum of four categories in sections 1 – 4 or one category from sections 5 & 6.

Section 1

1a Small floral front garden under 70m²
1b Large floral front garden over 70m²
1c Courtyard/forecourt garden up to 15m²
1d Plantman's front garden – permanent planting schemes

Section 2

2 Hanging or wall basket
3 Container – window box/tub/etc.
4 Floral display, incl. balconies, using any baskets/containers
5 Unusual garden feature

Section 3

6a Small floral garden under 100m²
6b Large floral garden over 100m²
6c Small plantman's garden under 100m²
6d Large plantman's garden over 100m²
6e Wildlife back garden

Section 4

7a Allotment garden up to 5 rods
7b Allotment garden over 5 rods

Section 5

8a Local authority run warden assisted / sheltered residential home, complex or day care facility
8b Other warden assisted / sheltered residential home, complex or other housing services provider
9 Business premises, incl. public houses
10 Large commercial landscape
11 Community floral display – your street, cut-de-sac, community centre, public service area
12 School gardening projects

Please return to: Fareham Borough Council, Parks & Open Spaces, FREEPOST FM33, Fareham PO16 7BR by 14 June 2014

Photos may be taken at these events for promotional purposes and we need your permission to use them, either in our publications or on our website. Please sign here if this is acceptable. _____ Thank you

The personal information you provide will be treated with the greatest confidence and held for a period of no more than five years for the purpose of these activities, promotion of related events and the mailing of associated material. Should you not wish to receive such information, then please tick here

10 Fareham Today – Spring 2014 • Tel: 01329 236100 • Email: customerservices@fareham.gov.uk

Website: www.fareham.gov.uk • Facebook: www.facebook.com/farehambc • Twitter: @FarehamBC 11