



Bringing People and Parks Together

Parks Events

2013

FAREHAM
BOROUGH COUNCIL



Welcome...

To our 2013 programme of events taking place in our Parks, Countryside and Woodland sites around the Borough of Fareham.

The programme is organised in partnership with the Fareham in Bloom volunteers and the Parks and Countryside Teams of Fareham Borough Council who work to encourage active participation in horticulture, conservation and other environmentally related activities. The team's work is highly regarded having received many accolades over the years from South and Southeast England in Bloom which in 2012 this was again recognised with a ninth consecutive Gold Medal.

This years programme will again feature the most popular events such as The Great Easter Egg Hunt at Holly Hill Woodland Park with a new theme; 'Jungle Mania' featuring jungle critters and treasure troves with a host activities, games and laughter to take you on an adventure through the woods in an Easter egg hunt like no other!

Two Gardeners' Fairs will again visit Fareham town centre and include many specialist growers and nurseries where you can pick up a fancy plant or two. The hugely popular Gardens Open Day will see six Fareham in Bloom award winning private gardens open for one day only where you will be able to sneak a peak into the horticultural marvels and hidden treasures.

Our walk and talk sessions that look at the differing aspects of nature and local biodiversity will focus on a number of subjects from native trees to wildflower meadows. To round off the year there will be some seasonal fun with spooky Halloween walks and Christmas cheer.

Whatever your interests and whatever the season our aim is to get you into the great outdoors and experience the rich and diverse parks and countryside sites we have in the Borough whilst having a really great time!

We look forward to welcoming you!

Helpful information

We look forward to welcoming you at our events and hope you have a great time. Here are some pointers to help you get the most out of your day.

- Due to event management, popularity and in some cases limited availability, all events must be booked in advance. All places are allocated at the time of payment so please book early to avoid disappointment.
- As with all events, we cannot predict the weather and on the odd occasion we may have no option but to cancel. This is a rare occurrence but should it be necessary, then we'll endeavour to contact participants.
- We try to make our events as accessible as possible but naturally some sites are easier to access than others. Please contact us beforehand should you have any particular needs and we'll do our best to assist.
- Please make a note of the time of your chosen event and try to be there a few minutes early. If you have any problems with where to go then just give us a call.
- For your own comfort please wear clothes suited to the event. We would suggest wearing sturdy shoes and possibly warm clothes and waterproofs dependent upon the season.
- We welcome children at all our events unless otherwise stated, but children under the age of 16 must be accompanied by an adult. Children under three years old are allowed free unless participating in an event.

CONTENTS

Warsash Winter Waders & Wildfowl	4
Simple Solutions for Summer	4
The Great Easter Egg Hunt	5
Fareham Gardeners Fairs	6
Behind Coldeast	6
Going Wild... Again	7
Tree Insight	7
Gardens Open In Fareham	8
Access All Areas	9
An Evening of Sensory Stimulation	10
Seed Bash	10
Things That Go Bump	11
Chesnuts Roasting on an Open Fire	11
How To Book	12
Booking Form	13
A Guide To The Main Sites	14



Saturday 16 February

Warsash Winter Waders & Wildfowl

There are many different species of waders, wildfowl and other birds feeding along the muddy banks of the River Hamble during the winter. Join the Countryside Ranger for a walk between Warsash Harbour and the Universal Marina, Swanwick to identify our feathered friends. Beginners are very welcome.

Location: Meet in the Passage Lane Car Park, Warsash by the public toilets.

Time: 10am start for approximately 1.5 hours

Tickets: £3 per person. Places limited to 20 people.

Dress & Equipment: Clothing suitable to weather and stout walking shoes. Bring a pair of binoculars if you have them.

Saturday 27 April

Simple Solutions for Summer

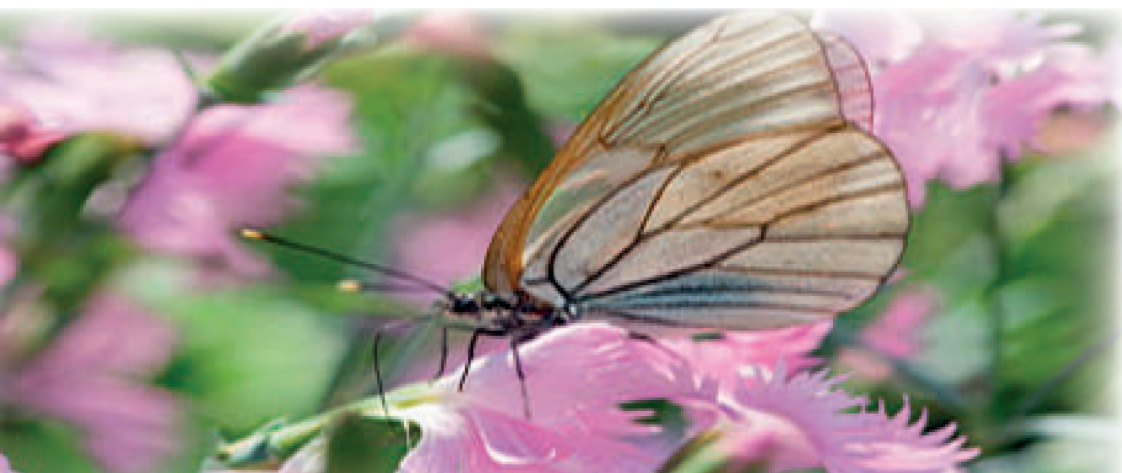
This workshop will look at a feast of floral delights in readiness for the summer season. Whether you want to create the perfect basket or cool container the staff at St Margaret's Nursery will guide you through the steps to your own floral masterpiece.

The first 60 people to book will receive a 20% discount voucher to use at the nursery on the day.

Location: St Margaret's Nurseries, St Margaret's Lane, Titchfield. (Held inside greenhouse)

Time: Sessions at from 10.00 - 11.00, 11.00 - 12.00 and 12.00 - 1.00pm for approximately 2 hours.

Tickets: Free. Unlimited tickets available.



Saturday 23 March

The Great Easter Egg Hunt

IT'S JUNGLE MANIA

It's time for that long awaited and much anticipated annual Easter extravaganza through the beautiful woodlands of Holly Hill!

With its unique, fresh and alternative angle on the conventional, this day is always supported by hundreds of adults and children, who go on a journey to collect clues, play games and find treasure as they work their way around the park.

Jungle mania, this years new and exciting theme will set the scene with a host of costumed characters and scene sets that bring the woods alive as you go in search of jungle critters and treasures.

LOCATION:

Meet at the Holly Hill
Woodland Park main car park
entrance, off Barnes Lane, Sarisbury
Green.

TIME: Start 12.00 noon with phased entry times until last entry at 4.00pm.

TICKETS: £5.50 per child. Adults free with children. 450 tickets available.

DRESS: Dependent on weather but waterproof shoes recommended. Fancy dress is optional. Refreshments will be available from the Friends of Holly Hill.

The event attracts literally hundreds of people and is always in great demand as a firm family favourite. Tickets will sell out very fast so we advise you book well in advance to avoid disappointment.

**Saturday 11 May
& Saturday 8 June**

Fareham Gardeners Fairs

Two dedicated gardening fairs set in the town centre of Fareham featuring specialist plant growers, nurseries, furniture suppliers and garden sundries along with advice from local gardening societies and professionals. The award winning Fareham in Bloom team will be on hand with St Margaret's Nurseries offering a free plant of a new Fuchsia variety and discount vouchers to the first 100 people who visit their stand.

Location: West Street, Fareham.

Time: 9am – 3pm



**Sunday 19 May
Behind Coldeast**

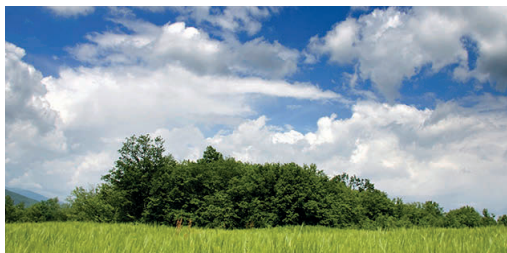
Fareham Borough Council is pleased to announce that in 2014 we will be undertaking the management of the wild grounds at the former Coldeast Hospital site. Besides looking at the wealth of wildlife we will be outlining management objectives for the site which will incorporate both nature conservation and public recreation. This is a great opportunity to venture in and explore this fascinating site and learn about the plans for its future.

Location: Meet near toilets at Holly Hill Woodland Car Park, off Barnes Lane.

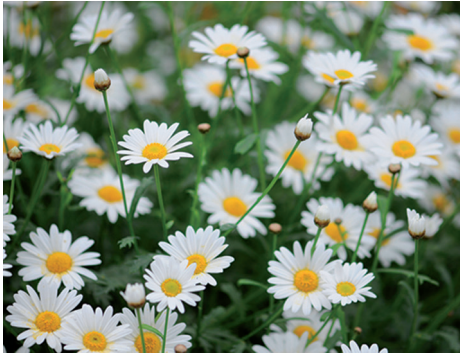
Time: 11.00am - 1.00pm

Tickets: £3 per person. Places limited to 25 people.

Dress & Equipment: Please wear suitable clothing and stout walking boots.



Thursday 6 June
Going Wild.....again



Following on from the successful Going Wild initiative started in 2012 this afternoon will look at the chalk downland meadow that was sown last autumn with information on the wild flowers, free seeds and an opportunity to take part in some botanical art.

Location: Linden Lea junction of Dore Avenue, Portchester.

Time: 1.00pm start

Tickets: Free. Cold drinks available.

Dress & Equipment: Please wear suitable clothing for the weather and possible sunscreen

Saturday 15 June
Tree Insight

Enjoy a leisurely stroll around Warsash Common with the Countryside Ranger and find out about the customs, legends and uses both physical and medicinal associated with twelve of our native trees.

Location: Meet at the New Road car park, off Fleet End Rd.

Time: 10am start for approximately 1.5 hours.

Tickets: £3 per person. Places limited to 20 people.

Dress: Clothing suitable to weather, stout walking shoes and possibly sunscreen.
*NB. The route for this walk includes crossing uneven surfaces and negotiating steps.

GARDENS OPEN IN FAREHAM

Sunday 28 July 2013

11am – 6pm

VISIT SIX OF THE FAREHAM IN BLOOM AWARD WINNING GARDENS

£5.00 ALL INCLUSIVE TICKET In aid of charity and Fareham in Bloom
(Simply turn up at any one of the gardens shown to start the tour)
Refreshments and plants on sale at selected garden

Oakfields, 45 Segensworth Road, Titchfield PO15 5EA

This extensive organic wildlife garden incorporates a vast array of features including meadow, orchard, fruit and vegetable potager, along with eclectic plant collections that surround the three ponds. The garden is complemented by artistic sculpture, resident honey bees and chickens with a range of produce grown on site offered for sale.

8 Birdwood Grove, Portchester PO16 8AF

A small plant collector's garden with a subtropical theme incorporating dramatic displays of both unusual foliage and floral amazement with the creative use of artistic structures intended to emulate the jungle outback.

51 Longmynd Drive, Fareham PO14 1SH

Large and artistic with many unusual and quirky features incorporating a diverse collection of plants. The garden is arranged on a number of levels and incorporates many water features, lawns, containers and artwork. There has been a partial redesign for 2013 following removal of hedging and conifers with the addition of new borders and ornamental trees.

2 Shenley Close, Fareham PO15 5PL

A small and colourful garden with several rockeries, koi pond, alpines and herbs along with a lovely collection of Acers and Azaleas that can be enjoyed on the seating which is provided throughout in a garden with an oriental charm.

11 Brecon Close, Fareham PO14 1ST

A garden redesigned six years ago centred around a cottage garden theme incorporating pergolas, arbours and seating areas which are in turn complimented by an ornamental stream and pond, enhanced by a large collection of plants species to encourage wild life.

20 Titchfield Park Road, Locks Heath PO15 5RW

This is a productive family garden with ponds, lawns, orchard, fruit and vegetable plots along with mature trees shrubs and hedges which give year round interest and colour whilst encouraging, supporting and protecting local wildlife.

For further information contact Jean Kindom
01329 314 808 www.fareham.gov.uk/parks

FAREHAM
BOROUGH COUNCIL

Bringing Parks and People Together

Fareham's Community Safety Partnership proudly presents...



Looking for something to do during the summer holidays?

Fareham Community Safety Partnership is working to provide a range of fun summer events totally free of charge for all 11–17 year olds living within the Borough of Fareham, or attending one of Fareham's schools.

Events will be held each Monday, Tuesday and Wednesday from Monday 29th July until Wednesday 14th August 2013, at locations across Fareham.

Activities include: American Football, Archery, Circus Skills, Henna tattooing, 75ft Assault course, DJ Skills, hair braiding, nail art, t-shirt design, cup cake decorating, Rugby, Football and a favourite from last year – free BBQ for participants.

Community Safety Partners supporting the scheme include: Hampshire Constabulary, Hampshire Fire & Rescue, Hampshire Youth Offending Team, Fareham Borough Council and Hampshire County Council. The scheme is also being supported by ASDA, Fareham Heathens Rugby Club, Crofton Saints Football Club and Portchester Pirates. We are also working collaboratively with Winchester Community Safety Partnership to deliver activities in Whiteley.



For the latest news on activities and event times and locations go to:
www.saferfareham.co.uk

If you have any queries you can contact the Community Safety Team at Fareham Borough Council:
Email: communitysafety@fareham.gov.uk
Tel: 01329 824496

FAREHAM
BOROUGH COUNCIL

#areyougame?

Twitter: #areyougame?

www.saferfareham.co.uk



Thursday 8 August An Evening of Sensory Stimulation

Enjoy an evening soiree with a horticulturist in this award winning garden in the heart of Fareham's Town Centre where there will be a walk and talk on the exotic plant world.

All participants will receive a free hardy Fuchsia plant courtesy of St. Margaret's Nurseries.

Location: Sensory Garden, Osborn Road, Fareham.

Time: Start 6.30pm. Duration approx. 2hrs.

Tickets: £4.00 Numbers limited to 30. Tea and cakes available.



Saturday 19th October Seed Bash!

The age-old game of conkers has been played every autumn for generations and here at Holly Hill the tradition still lives on. Join the Friends of Holly Hill as they polish their best seeds in readiness for the annual quest to find their very own conker champion!

Conkers will be supplied and the champion wins the coveted trophy!

Location: Meet at Holly Hill main car park, off Barnes Lane, Sarisbury Green.

Time: 2.00 pm start.

Tickets: To book, Tel: 01329 310290. 50p enrolment payable on the day. Refreshments available. This event is run by the Friends of Holly Hill

Dress: Warm clothes and stout footwear.

Thursday 31 October

Things that go Bump!

Holly Hill Woodland Park has a long and interesting history and is known for its night time activities of the paranormal world. Join a psychic investigator for a real look into this fascinating site as we take a walk into the dark side and hear some of the age old stories and legends.

Location: Meet at the Holly Hill Woodland Park main car park entrance, off Barnes Lane, Sarisbury Green.

Time: Sessions starting at 6.30pm and 8.30pm lasting approx 1hr 45mins. Numbers limited to 35 per session.

Tickets: £4.50. These seasonal events are always popular and sell out fast so be sure to book well in advance

Dress: Warm clothing and suitable shoes for walking in the woodland park. Hot drinks will be available.

Sunday 1 December

Chestnuts Roasting on an Open Fire

Take a winter walk around the beautiful woods of Holly Hill with mulled wine and roasted Chestnuts!

Join our medicinal herbalists for some ideas for Natural Christmas decorations and seasonal herbs and spices.

Location: Meet at the Holly Hill Woodland Park main car park entrance, off Barnes Lane, Sarisbury Green.

Time: Start 12.00 noon until 3pm

Tickets: £4.50. per person. 40 tickets available. Refreshments available

Dress: Warm clothes for the weather and waterproof shoes. A notebook and pen may be useful.

HOW TO BOOK

Many of our events have limited places and you are strongly advised, due to their popularity, that you book in advance. To be sure of a place then complete the booking form opposite stating the events that you wish to attend and return no later than two weeks prior to the start of your first chosen event.

Remember to fill in all sections of the form and include a daytime telephone number along with any fees and the number of people attending in the 'places required' box and return to Park Events, Fareham Tourist Information Centre, Westbury Manor, West Street, Fareham PO16 OJJ

All fees are kept to an absolute minimum, to encourage participation from across our

communities and represent excellent value for money taking into consideration that the majority of the events team are volunteers. Payment must be sent with your booking and only cheques should be sent through the post. Please do not send cash. Cheques or cash will be accepted on the day where tickets are still available but this can not be guaranteed. Children under the age of three years are accepted free of charge unless taking part in an event.

Please make cheques payable to Tourism SouthEast.

Debit and visa card bookings can also be taken by telephone.

All bookings will be acknowledged and a receipt sent accordingly.

If you fail to attend a pre booked event then unfortunately we cannot reimburse the fee unless cancellation is made at least two weeks prior to your chosen event.

In the unlikely situation that we have to cancel an event all fees will be reimbursed in full or you will be offered an alternative event if you so wish and if this is available.

The Parks and Countryside Events Team reserve the right to change or alter the content of the event should it be necessary without prior notice.

Enquires and bookings can be made to:

Fareham Tourist information centre.

TEL: 01329 221342

9.30am – 5.00pm
Tuesday – Friday

10.00am – 4.00pm
Saturday

EMAIL: farehamtic@tourismse.com

Have
a great
time!

THE BOOKING FORM

Name:

Address:

Postcode:


Email:

Daytime tel:

Bookable events you would like to take part in.

Please indicate the number of places required in the relevant box. Only events organised by Fareham Borough Council and those that are bookable, are listed here. Please return with payment to Fareham TIC, West Street Fareham PO16 0JJ.

Event	Date	Price per person	No. places required
Warsash Winter Waders & Wildfowl	Sat 16 Feb	£3	
The Great Easter Egg Hunt	Sat 23 March	£5.50	
Simple Solutions for Summer	Sat 27 April	Free	
Behind Coldeast	Sun 19 May	£3	
Going Wild..... Again	Thurs 6 June	Free	
Tree Insight	Sat 15 June	£3	
An Evening of Sensory Stimulation	Thurs 8 Aug	£4	
Things that go Bump!	Thurs 31 Oct	£4.50	
Chestnuts Roasting on an open Fire	Sun 1 Dec	£4.50	
	TOTAL PAYMENT ENCLOSED		

 The personal information you provide will be treated with the strictest confidence and held for a period of no more than 5 years for the purpose of these activities, promotion of related events and the mailing of associated material. Should you not wish to receive such information, then please tick

Photos may be taken at these events for promotional purposes and we need your authority to use them either in our publications or on our website. Please sign here if this is acceptable.

THANK YOU

Cut out and keep safe. 2013 events I've booked.

Featured Locations...



1 Holly Hill Woodland Park

The best known of Fareham's open spaces, Holly Hill is being restored to some of its former glory. It was originally designed as an estate park and arboretum. Wind your way from the main car park down to the lakes where there is always some resident wildfowl to see and enjoy and a collection of trees and shrubs from around the world. Alternatively look for the grotto or the sunken garden which have been reclaimed from dereliction for visitors to enjoy. It is well worth your while to go beyond the lake into the woodland which is a haven of peace and quiet. Why not extend your journey into the County Council's Wendlehome Nature Reserve that will lead you down to the Hamble shore with its variety of plant and bird life.

Holly Hill was awarded a gold medal from South and Southeast in Bloom in 2012 and holds the Green Flag, national parks standard.

2 Whiteley Woods

The woods of Whiteley are what remain of a lost landscape. Historically the area was a combination of coppice woodland and pasture woodland which would have been managed as a renewable source of material. Today they act as havens for the local wildlife which love the dappled shade produced by the ancient Oaks and coppiced hazel. Species of butterfly include the White admiral, Purple Hairstreak and the Purple Emperor.

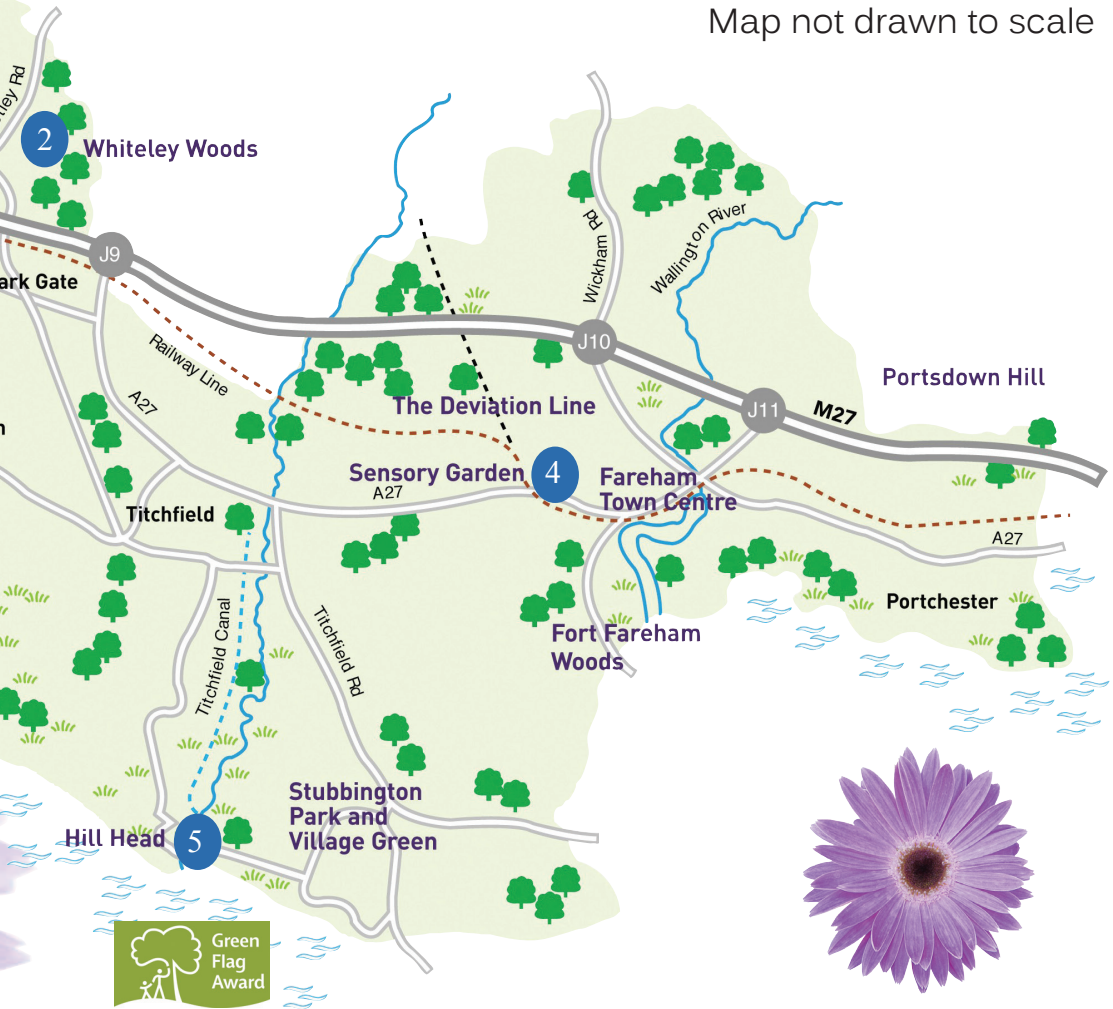
3 Warsash Common

Originally known as Fleet End, because, this was once the furthest navigable point up the inlet or fleet, the common has been restored to public use following land fill of the old sand and gravel quarries. The majority of the site is a fascinating mixture of heath, woodland, meadow and marsh waiting to be explored.



Warsash Common is home to a wide range of plants, trees and wildlife.

Follow the trail around the site and you may well stumble across a wealth of wildlife that includes basking Grass Snakes and lizards in the summer and birds that may breed here include Linnets and Stonechats which live among the gorse. In the denser woodland of willow, alder and silver birch you may get a glimpse of a Green Woodpecker, Jay or Wren. The site was recognised with a gold medal from South and Southeast in Bloom in 2012.



4 Sensory Garden of Reflection

Situated next to the United Reformed Church within a short walk of Fareham town shopping centre, this award winning sensory garden was opened in 1998 in memory of the late Princess Diana. Based on the senses

of touch, sound, vision, smell and taste this green oasis is packed with rare, unusual and exotic plants from all over the world. It has held the Green Flag national parks award since 2009 and also recieved a gold medal from South and Southeast in Bloom in 2012

5 Hill Head Foreshore

A base for exploring the nationally important Titchfield Haven Nature Reserve and for people to ramble along Hill Head Harbour at the mouth of the River Meon and the adjacent wildlife rich beaches.

How to contact us

Bookings

Fareham Tourist Information Centre, Westbury Manor, West Street
Fareham PO16 0JJ
Tel: 01329 221342
9.30am - 5pm Tuesday - Friday
10am - 4pm Saturday

Email: farehamtic@tourismse.com
Fax: 01329 282959
www.fareham.gov.uk

Special Needs



We endeavour to make all our events as accessible as possible. Should you have any special needs, please contact us and we will our best to assist.



An audio version of this guide can be made available on request.

If you would like a copy of this guide in large print, on tape or translated, please tel: 01329 824543.

Other publications are available in the series including:

- Holly Hill Woodland Park
- The Sensory Garden
- Warsash Common
- Fareham in Bloom
- Countryside Volunteer Newsletter

For further information on parks (other than events bookings,) Fareham in Bloom or becoming a volunteer, please contact us.

Tel: 01329 236100
Email: parks@fareham.gov.uk