



Historic Environment Background Paper

September 2020

Contents

| | | |
|----------|--|-------------------------|
| 1 | Introduction | Page 1 |
| 2 | The Borough's Heritage Assets | 2 |
| | • Listed Buildings | 2 |
| | • Locally Listed Buildings | 3 |
| | • Conservation Areas | 3 |
| | • Scheduled Ancient Monuments | 4 |
| | • Historic Parks & Gardens | 4 |
| | • Protected Wreck Sites | 4 |
| | • Areas of Archaeological Potential | 4 |
| 3 | Planning Policy | 6 |
| | • Relevant Legislation | 6 |
| | • Planning Practice Guidance | 6 |
| | • Historic England | 7 |
| | • Local Plan Evidence and Policy Approach | 7 |
| | Appendices | 9 |
| | • Appendix 1 – Maps of Heritage Assets by ward | 10 |
| | • Appendix 2 - Nationally Listed Heritage in the Borough | 23 |
| | • Appendix 3 – Locally Listed Buildings in the Borough | 33 |
| | Glossary | 36 |

1.0 Introduction

- 1.1 A series of background papers have been produced to accompany the emerging Fareham Local Plan 2037. The background papers provide an understanding of the latest evidence base and the reasoning for the policy approaches in the Plan.
- 1.2 The purpose of this background paper is to provide an up to date position on the quantity, quality and status of the Borough's historic environment and to outline the Council's policy approach for the management of development affecting heritage assets and the historic environment.
- 1.3 Heritage assets are an irreplaceable resource and make a significant contribution to the character and identity of Fareham Borough. It is therefore important that we ensure we have adopted the correct approach to conserving and enhancing the historic environment.
- 1.4 Effective conservation delivers wide social, cultural, economic and environmental benefits. National planning policy widely recognises the importance of protecting and conserving heritage assets and their significance.



2.0 The Borough's Heritage Assets

- 2.1 A heritage asset is defined as *a building, monument, site, place, area or landscape identified as having a degree of significance meriting consideration in planning decisions, because of its heritage interest* (NPPF). They are irreplaceable resources and should be conserved in a manner appropriate to their significance.
- 2.2 There are two types of heritage asset: designated and non-designated:
- 2.3 Designated heritage assets include nationally listed buildings, scheduled monuments, registered parks and gardens and battlefields, and protected wreck sites. Designation highlights what is significant about an asset and is intended to ensure that the character of the asset in question is protected through the planning system and any future changes made to it do not result in the loss of its significance.
- 2.4 Non-designated heritage assets are those which have been identified as having a degree of significance meriting consideration in planning decisions, but which are not formally designated heritage assets. Non-designated heritage assets within the Borough include locally listed buildings, sites of archaeological importance and historic parks and gardens.
- 2.5 The Department for Culture, Media and Sport (DCMS) and Historic England, the public body and statutory adviser on the historic environment, are both responsible for the identification and designation of heritage assets.
- 2.6 Fareham has a rich and varied historic environment. The assets which can be found in the Borough are shown in the detailed maps found in Appendix 1 and are looked at in more detail in the following sections.

Listed Buildings

- 2.7 Buildings are nationally listed to mark and celebrate a building's special architectural and historic interest. All buildings built before 1700 which survive in anything like their original condition tend to be listed, as do most of those built between 1700 and 1850. Buildings from the period 1850-1945 require more selectivity, due to the greater number of buildings that have survived and for those constructed after 1945 even more selectivity is required in listing. There is usually a minimum building age of 30 years for it to be eligible for listing. The aesthetic merits, representativeness, national interest and state of repair are also taken into account.
- 2.8 Listed buildings are broken down into 3 categories:
- Grade I buildings: buildings of exceptional interest;
 - Grade II buildings: particularly important buildings of more than special interest;
 - Grade II*: buildings of special interest. This classification is the most common (92% of all listed buildings are in this listing class) and it is the most likely grade of listing for a home owner.
- 2.9 There are a wide variety of buildings and structures on the list including houses, barns, bridges, public buildings, churches, walls, milestones, telephone boxes, war memorials, lamp columns and gates.

- 2.10 There are a total of 438 nationally listed buildings and structures in the Borough, the majority of which are Grade II listed (as of 2020). There are also 4 Grade I listed buildings and 20 Grade II* listed buildings, details of which can be found in Appendix 2.
- 2.11 The Planning (Listed Buildings and Conservation Areas) Act 1990 requires planning authorities, when determining planning applications, to have special regard to the desirability of preserving a listed building or its setting or any features of special architectural or historic interest which it possesses.
- 2.12 Historic England publishes a register of listed buildings and structures considered to be at risk of being lost as a result of neglect, decay or inappropriate development. As of 2020, the Heritage at Risk Register indicates that there is only 1 building at risk in the Borough which is Fort Fareham, Fareham. Further details on the condition of this building can be found at: <https://historicengland.org.uk/advice/heritage-at-risk/search-register/list-entry/46643>.

Locally Listed Buildings

- 2.13 The Council keeps a list of buildings of local architectural or historical significance, but which are not judged to have national significance. As of January 2020, there are 200 locally listed buildings. A catalogue of the Locally Listed Buildings in the Borough is set out in Appendix 3.

Conservation Areas

- 2.14 Conservation Areas are created where a local planning authority identifies an area of special architectural or historical interest, which deserves special management to protect that character. The Council has a duty to conserve their character and appearance when making planning decisions.
- 2.15 The character of each area derives not just from the style and age of individual buildings, but also from the way groups of buildings are arranged, the spaces between them, their historical significance in the development of an area and their use. Other factors, including open spaces, trees and landscaping interact to form the overall character of an area.
- 2.16 There are 13 conservation areas in the Borough:
- Cams Hall
 - Catisfield
 - Fareham High Street
 - Hook
 - Osborn Road
 - Portchester, Castle Street
 - Sarisbury Green
 - Swanwick Shore
 - Titchfield
 - Titchfield Abbey
 - Town Quay
 - Wallington
 - Warsash

- 2.17 For each Conservation Area, the Council has prepared a Conservation Area Character Assessment which identifies the features in each Conservation Area that help to define its character. This helps decision making about developments that may impact on the character of a Conservation Area, as it provides context and understanding as to why the area is special.
- 2.18 The Conservation Area Character Assessments range in age, with the oldest dating from 2003. For further information on each of the Conservation Areas and their Character Assessments, please go to:
www.fareham.gov.uk/planning/conservation/intro.aspx

Scheduled Monuments

- 2.19 Scheduled Monuments is the oldest form of heritage protection, which dates back to the 1882 Ancient Monuments Act. It is the designation evolved specifically for sites of an archaeological character, whereby nationally important sites and monuments are given legal protection by being placed on a list. Historic England advises the Secretary of State as to which sites should be added to the schedule.
- 2.20 There are 5 scheduled monuments within the Borough:
- Fort Fareham, Fareham
 - Titchfield Abbey and Fishponds, Titchfield
 - Portchester Castle, Portchester
 - Stony Bridge, Titchfield
 - World War II Heavy Anti-aircraft Gunsite, Monument Farm

Historic Parks & Gardens

- 2.21 Historic England keeps a 'Register of Historic Parks and Gardens of special historic interest in England', first established in 1983. The main emphasis of the Register is on gardens, grounds and other planned open spaces, such as town squares. The majority of sites registered are, or started life as, the grounds of private houses, but public parks and cemeteries are also important categories. The emphasis of the Register is on 'designed' landscapes, rather than on planting or botanical importance.
- 2.22 There are currently no nationally registered Historic Parks and Gardens within Fareham Borough, however 8 Historic Parks and Gardens have been identified as being of particular local importance.
- 2.23 The 8 locally important parks and gardens are:
- Bath Lane Recreation Ground, Fareham
 - Bishopswood, Fareham
 - Brooklands, Sarisbury Green
 - Cams Hall, Fareham
 - Coldeast Hospital, Sarisbury
 - Holly Hill, Sarisbury
 - Hook Park, Warsash
 - Uplands, Fareham

Protected Wreck Sites

- 2.24 A Protected Wreck Site is a designated area around a wreck, which is designed to



prevent uncontrolled interference. The protected areas are likely to contain the remains of a vessel, or its contents, which are of historical, artistic or archaeological importance.

- 2.25 The wreck of the Grace Dieu, the largest of Henry V's 'great ships', located in the Borough in the River Hamble, was designated in 1974¹. In 2015, a smaller vessel alongside the Grace Dieu was identified as the possible remains of the Hologost, another of Henry V's war fleet. Historic England have moved to protect the ship and will begin undertaking further research into the wreck site.
- 2.26 Protected wrecks are identified by the NPPF as assets of the highest significance and are considered under the Marine and Coastal Access Act (2009) which applies up to the mean high water mark. The South Marine Plan 2018² includes the objective to identify and conserve heritage assets that are significant to the historic environment of the south marine plan areas and provides policy to support this.

Areas of Archaeological Potential

- 2.27 Hampshire County Council have identified areas considered to have special archaeological potential, and which might have impacts on the implementation of planning policy, through positive opportunities and potential constraints.
- 2.28 These are areas where the County Council believe there to be a reasonable probability that archaeological remains survive.
- 2.29 There are four levels of potential:
- Red areas: nationally important and designated archaeological sites (also known as scheduled monuments);
 - Orange areas: of national importance although not designated, but would have equivalent weight to scheduled monuments;
 - Yellow areas: sites of known complexity, importance and extent; and
 - Green dots: sites of known complexity but for which there is not yet a known extent.
- 2.30 The areas of archaeological potential within the Borough are illustrated in the maps in Appendix 1.

¹ For more information, please visit:

<https://historicengland.org.uk/news-and-features/news/historic-wreck-identified>

² Found at:

https://assets.publishing.service.gov.uk/government/uploads/system/uploads/attachment_data/file/726867/South_Marine_Plan_2018.pdf



3.0 Planning Policy

- 3.1 The National Planning Policy Framework (NPPF) sets out the government’s planning policies for England. The central theme of the NPPF is the achievement of sustainable development, which includes an environmental objective to contribute to protecting and enhancing our natural, built and historic environment.
- 3.2 The historic environment is defined by the NPPF as *“All aspects of the environment resulting from the interaction between people and places through time, including all surviving physical remains of past human activity, whether visible, buried or submerged, and landscaped and planted or managed flora.”*
- 3.3 The NPPF states that *“Plans should set out a positive strategy for the conservation and enjoyment of the historic environment, including heritage assets most at risk...”* (paragraph 185).
- 3.4 The NPPF sets out that *“local planning authorities should maintain or have access to a historic environment record and be used to assess the significance of heritage assets and the contribution they make to the environment”* (paragraph 187) and *“Local planning authorities should make information about the significance of the historic environment gathered... publicly accessible”* (paragraph 188).
- 3.5 In decision-making terms, planning authorities should *“require an applicant to describe the significance of any heritage assets affected, including any contribution made by their setting...; [and] Local planning authorities should identify and assess the particular significance of any heritage asset that may be affected by a proposal”* (paragraphs 189 – 190).
- 3.6 When considering the potential impact of a proposed development on the significance of a heritage asset *“great weight should be given to the asset’s conservation”* (paragraph 193).

Relevant Legislation

- 3.7 In addition to the NPPF, there is other legislation which must be accorded to when considering planning for the historic environment.
- 3.8 The legislation under which assets are designated are:
- Listed Buildings - Planning (Listed Buildings and Conservation Areas) Act 1990
 - Scheduled Archaeological Sites - Ancient Monuments and Archaeological Area Act 1979
 - Protected Wreck Sites - Protection of Wrecks Act 1973, the Ancient Monuments and Archaeological Areas Act 1979, and the Protection of Military Remains Act 1986
 - Registered Parks and Gardens and Battlefields - The Historic Buildings and Ancient Monuments Act 1953

Planning Practice Guidance

- 3.9 The National Planning Practice Guidance offers advice on protecting and enhancing



the historic environment within local plan-making and decision-taking in accordance with the policies set out in the NPPF. The guidance expands on the paragraphs within the NPPF.

- 3.10 For more information, please visit:
<http://planningguidance.communities.gov.uk/blog/guidance/conserving-and-enhancing-the-historic-environment/overview/>

Historic England

- 3.11 Historic England publishes an online *Heritage Protection Guide* which sets out information relating to the law, policy and guidance that encompasses the protection and conservation of heritage assets.
- 3.12 For more information, please visit: <http://historicengland.org.uk/advice/hpg/>

Historic Environment Records

- 3.13 The NPPF requires local planning authorities to either maintain or have access to a historic environment record, which applicants should consult when submitting an application involving a historic building.
- 3.14 Historic Environment Records (HER) are publicly accessible sources of information about the local historic environment. They provide information for plan-making and designation decisions (such as information about designated and non-designated heritage assets, and information that helps predict the likelihood of current unrecorded assets being discovered during development).
- 3.15 Hampshire County Council maintains the Historic Environment Record data for Fareham which includes archaeological sites and finds, historic buildings and landscapes, monuments and parks and gardens.
- 3.16 For further information, including archaeological advice and to search the HER, go to: <https://www.hants.gov.uk/landplanningandenvironment/environment/historicenvironment>

Local Plan Evidence and Policy Approach

- 3.17 The Fareham Local Plan 2037 policy approach to the Historic Environment has sought to meet the objectives set out in the National Planning Policy Framework, and the nature of this approach has been adjusted to reflect input from key stakeholders under the duty to cooperate.
- 3.18 The evidence used to inform the preparation of the Fareham Local Plan 2037 in relation to heritage and conservation includes:
- Historic Environment Records
 - Conservation area character assessments
 - Local Lists of non-designated heritage assets



- 3.19 The approach to policy has further been informed by Planning Practice Guidance as well as guidance produced by Historic England, including the Good Practice Advice Note: The Historic Environment in Local Plans³.
- 3.20 The Fareham Local Plan 2037 Vision for the Borough acknowledges the importance of the historic environment and includes that heritage assets will continue to be appropriately protected. This is further built on in the Key Strategic Priorities which provide the focus in formulating the plan and its policies. These include “Appropriately manage and protect the Borough’s historical assets”.
- 3.21 The Heritage and Conservation chapter in the Fareham Local Plan 2037, which includes a specific Strategic Policy for Historic Environment and Heritage Assets as well as development management policies, ensures the local plan complies with the NPPF requirement to set out a positive strategy for the conservation and enjoyment of the historic environment. In addition, where there are heritage concerns affecting a specific site allocation, the individual site allocation policy includes specific measures aimed at conserving the historic environment.

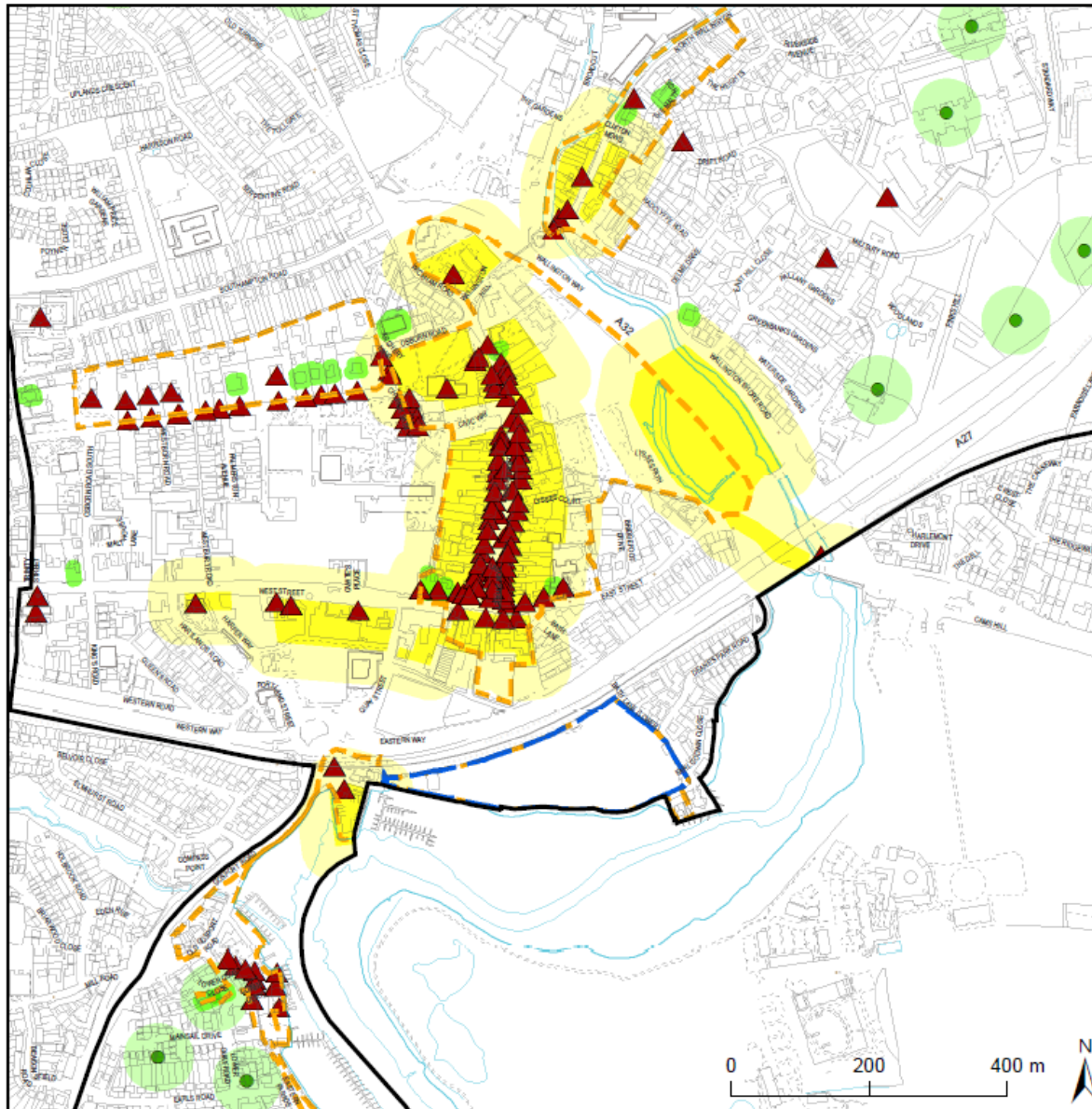
³ <https://historicengland.org.uk/images-books/publications/gpa1-historic-environment-local-plans/>











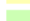

Appendices

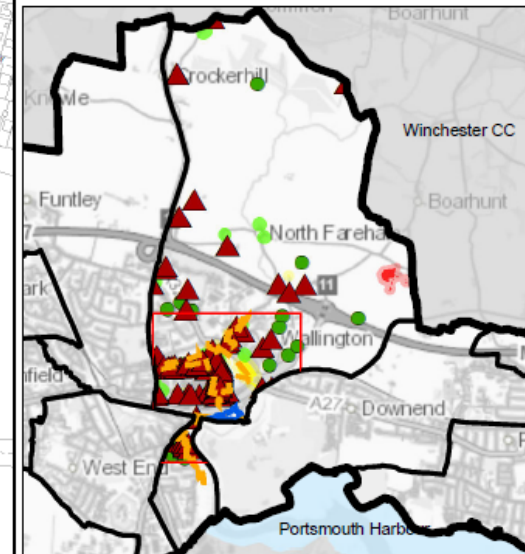


Appendix 1- Maps of Heritage Assets by ward

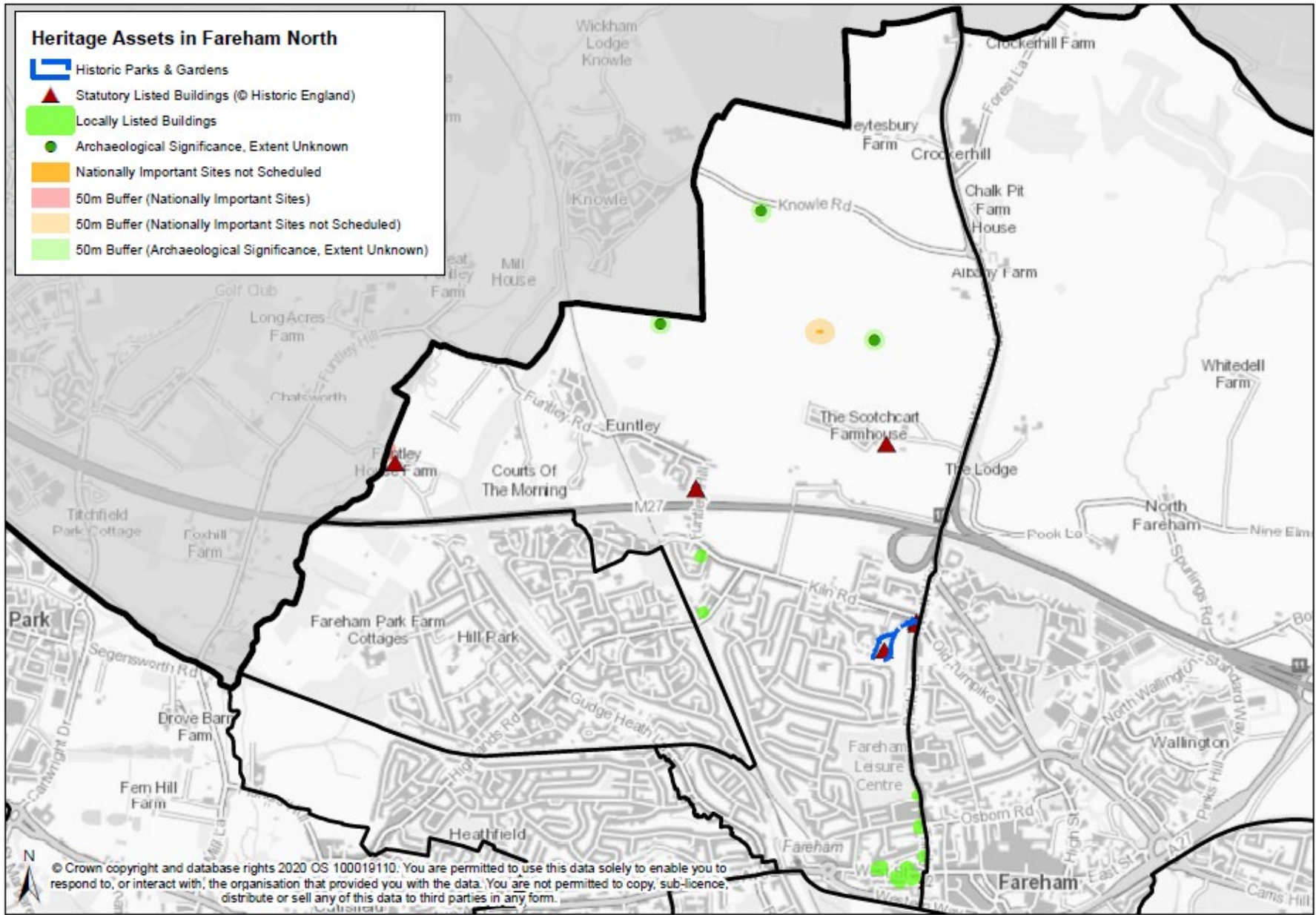


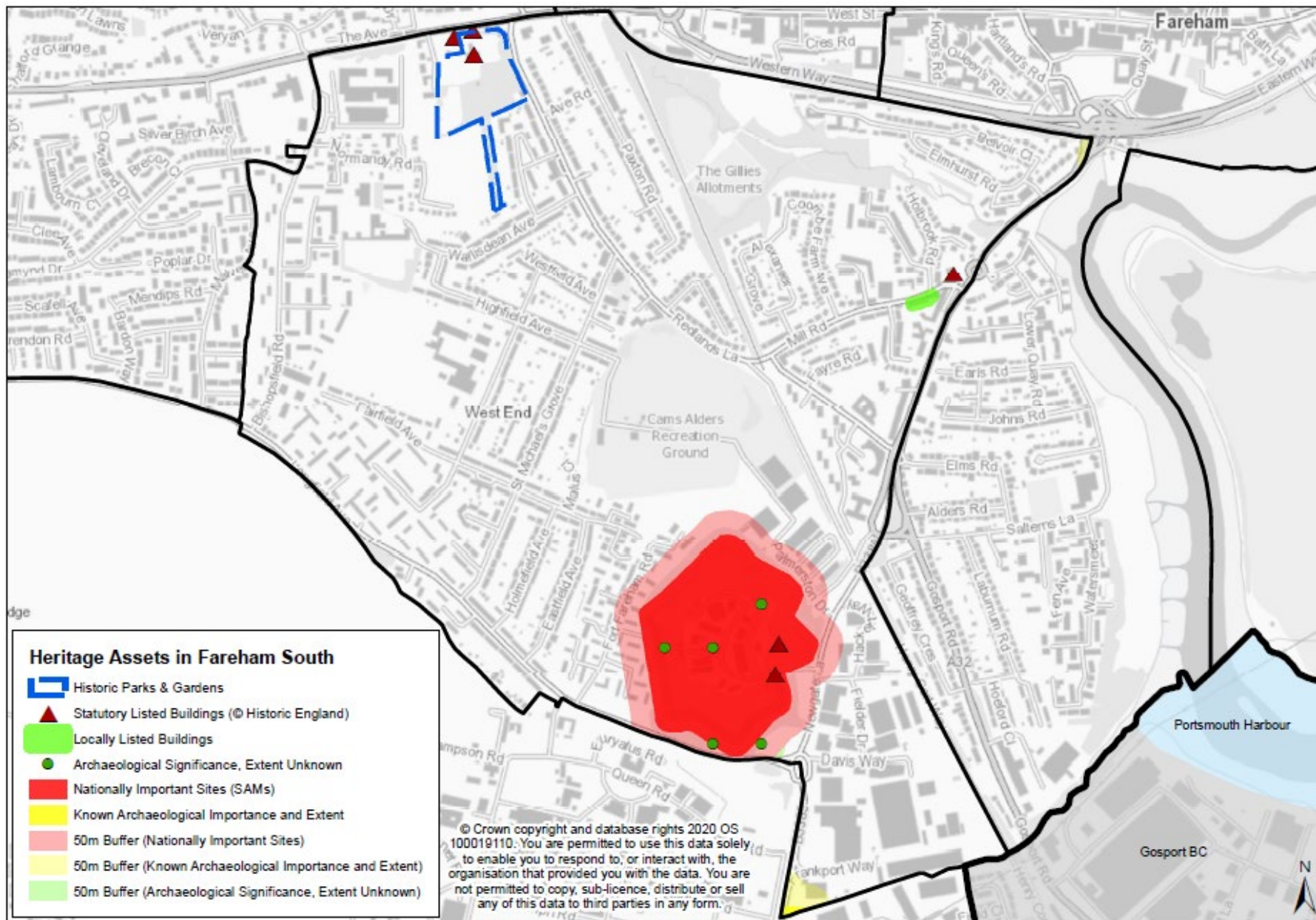
Heritage Assets in Fareham East

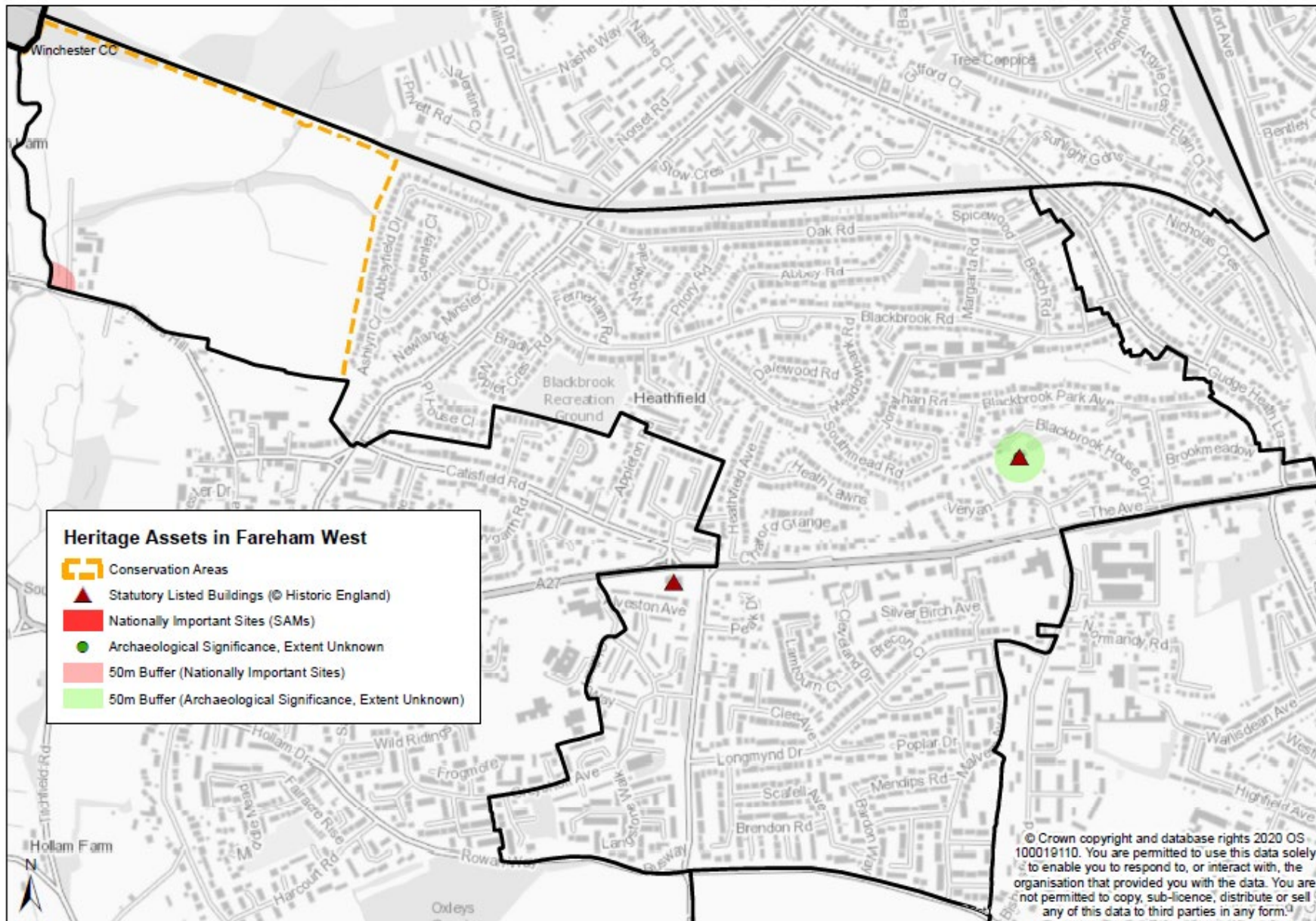
-  Historic Parks & Gardens
-  Conservation Areas
-  Statutory Listed Buildings (© Historic England)
-  Locally Listed Buildings
-  Nationally Important Sites (SAMs)
-  Known Archaeological Importance and Extent
-  Archaeological Significance, Extent Unknown
-  50m Buffer (Nationally Important Sites)
-  50m Buffer (Known Archaeological Importance and Extent)
-  50m Buffer (Archaeological Significance, Extent Unknown)

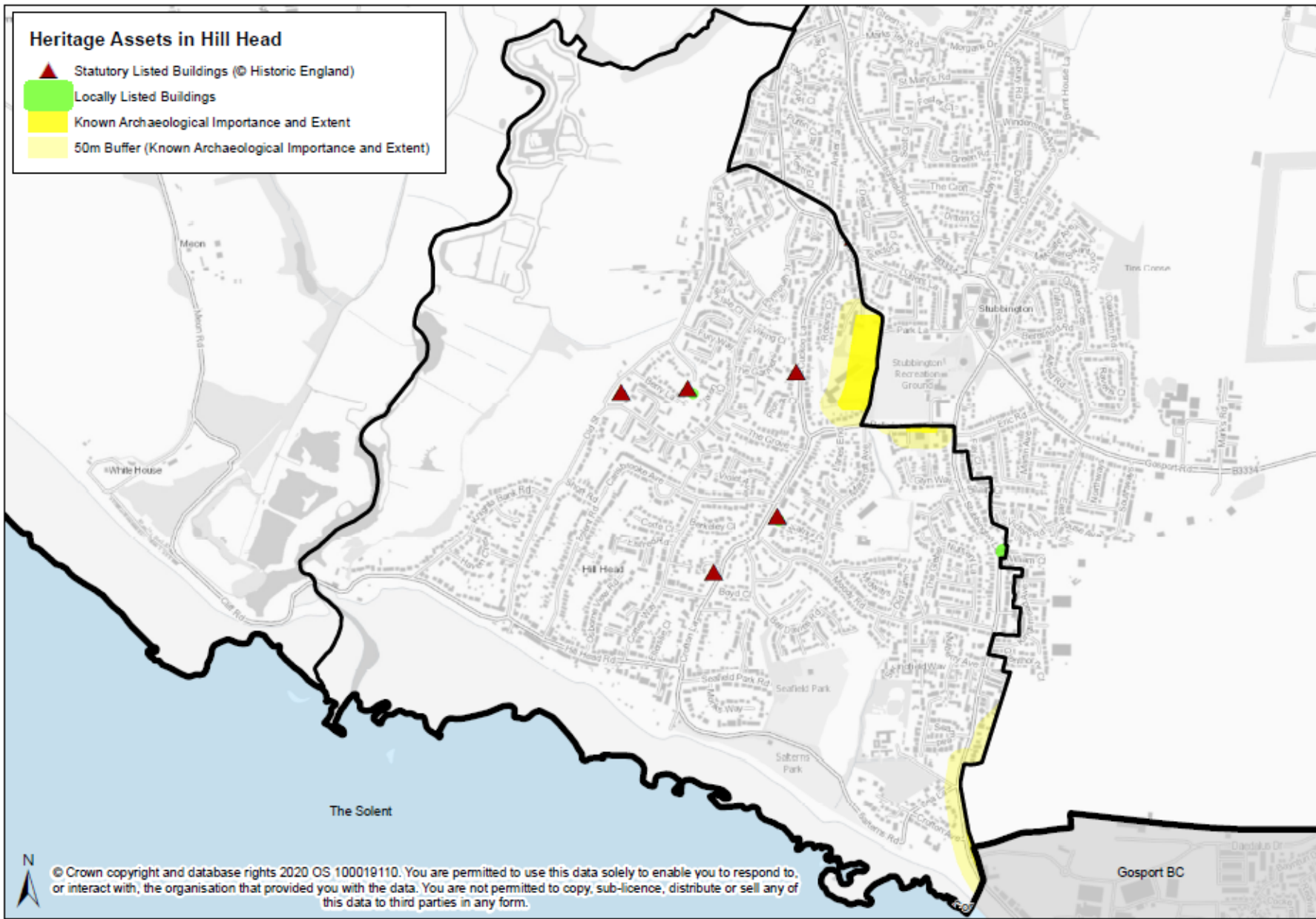


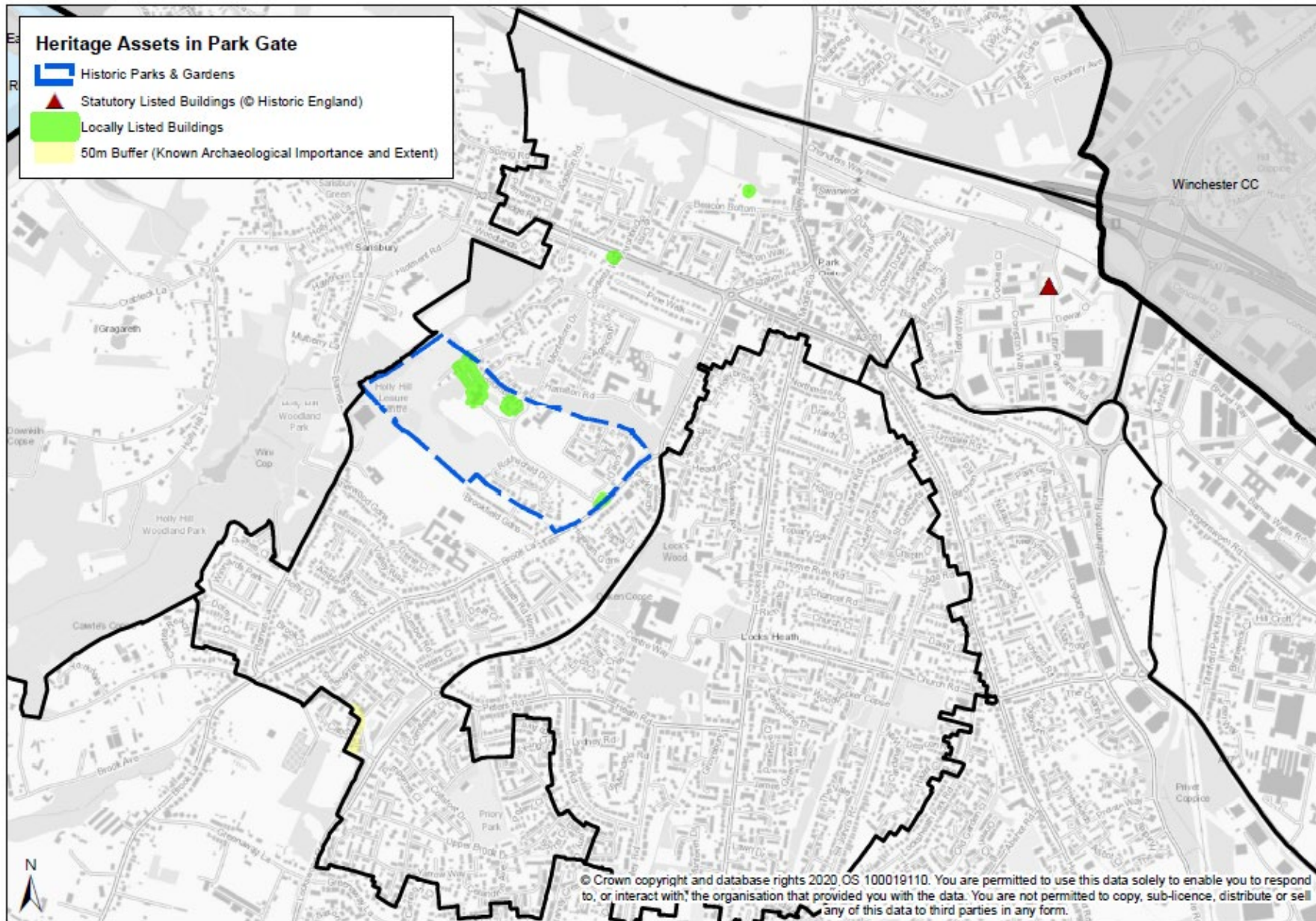
© Crown copyright and database rights 2020 OS 100019110. You are permitted to use this data solely to enable you to respond to, or interact with, the organisation that provided you with the data. You are not permitted to copy, sub-licence, distribute or sell any of this data to third parties in any form.

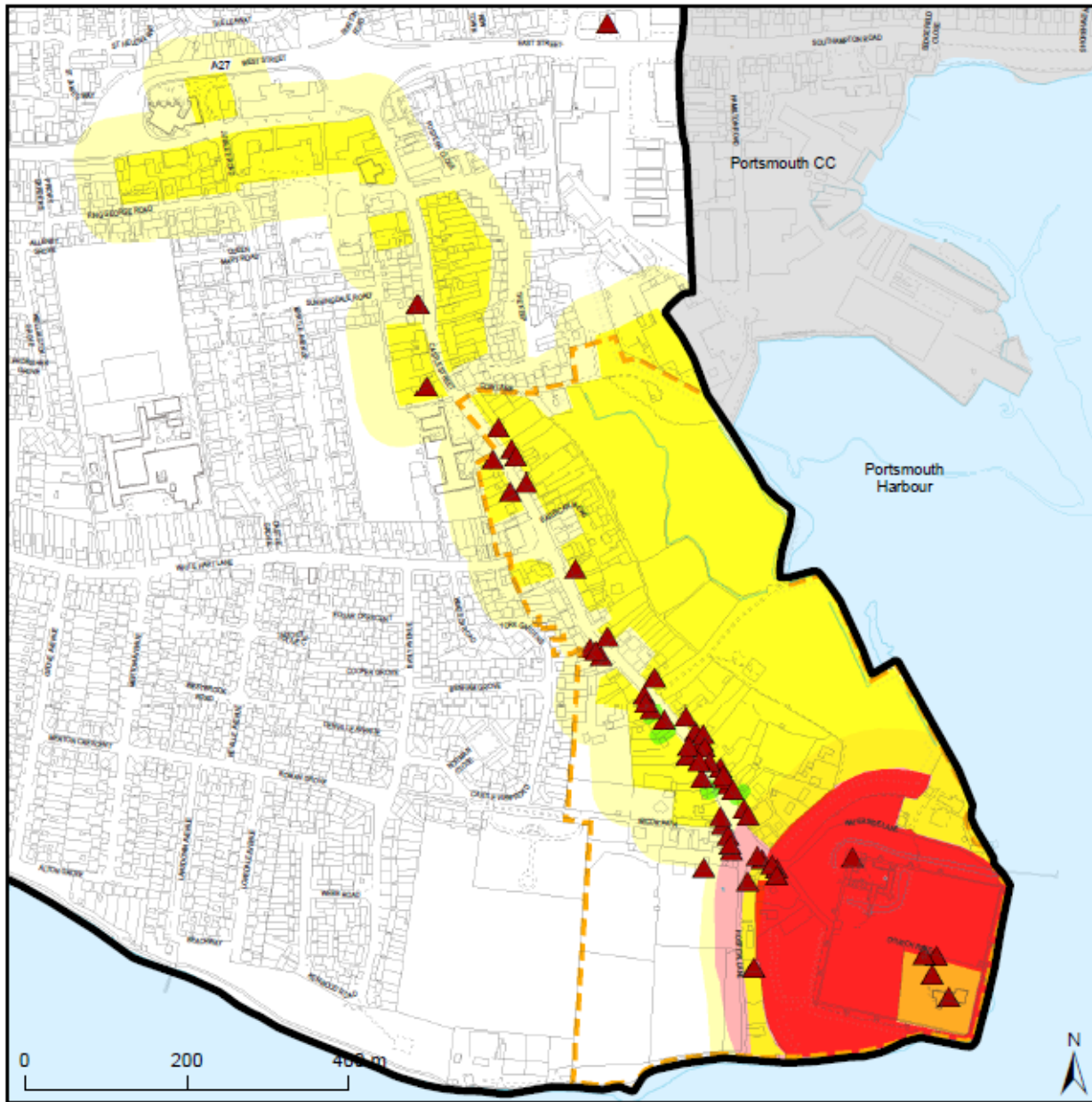






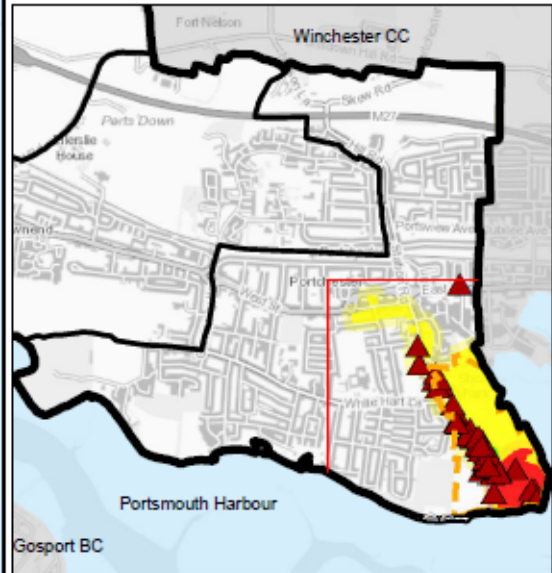




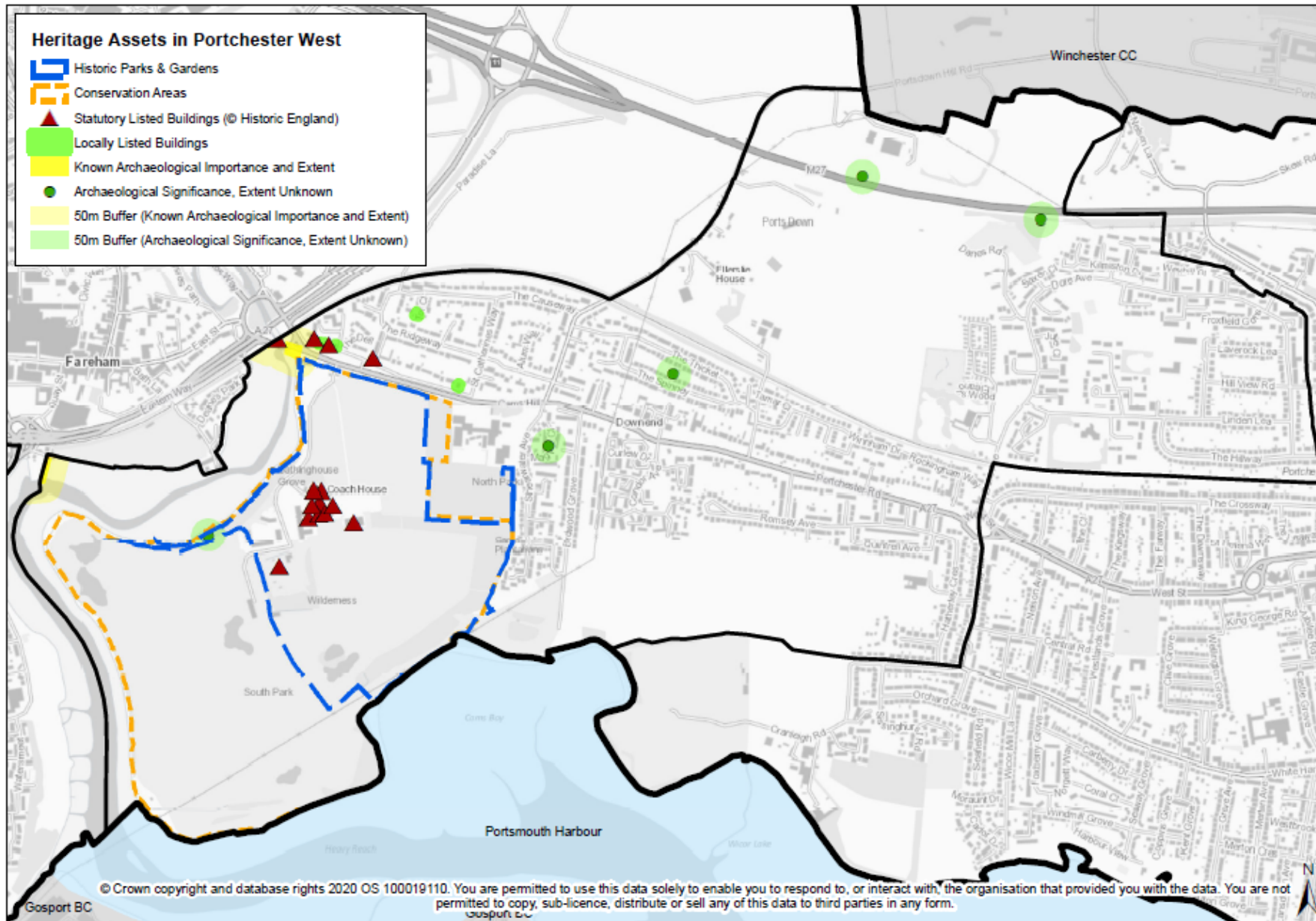


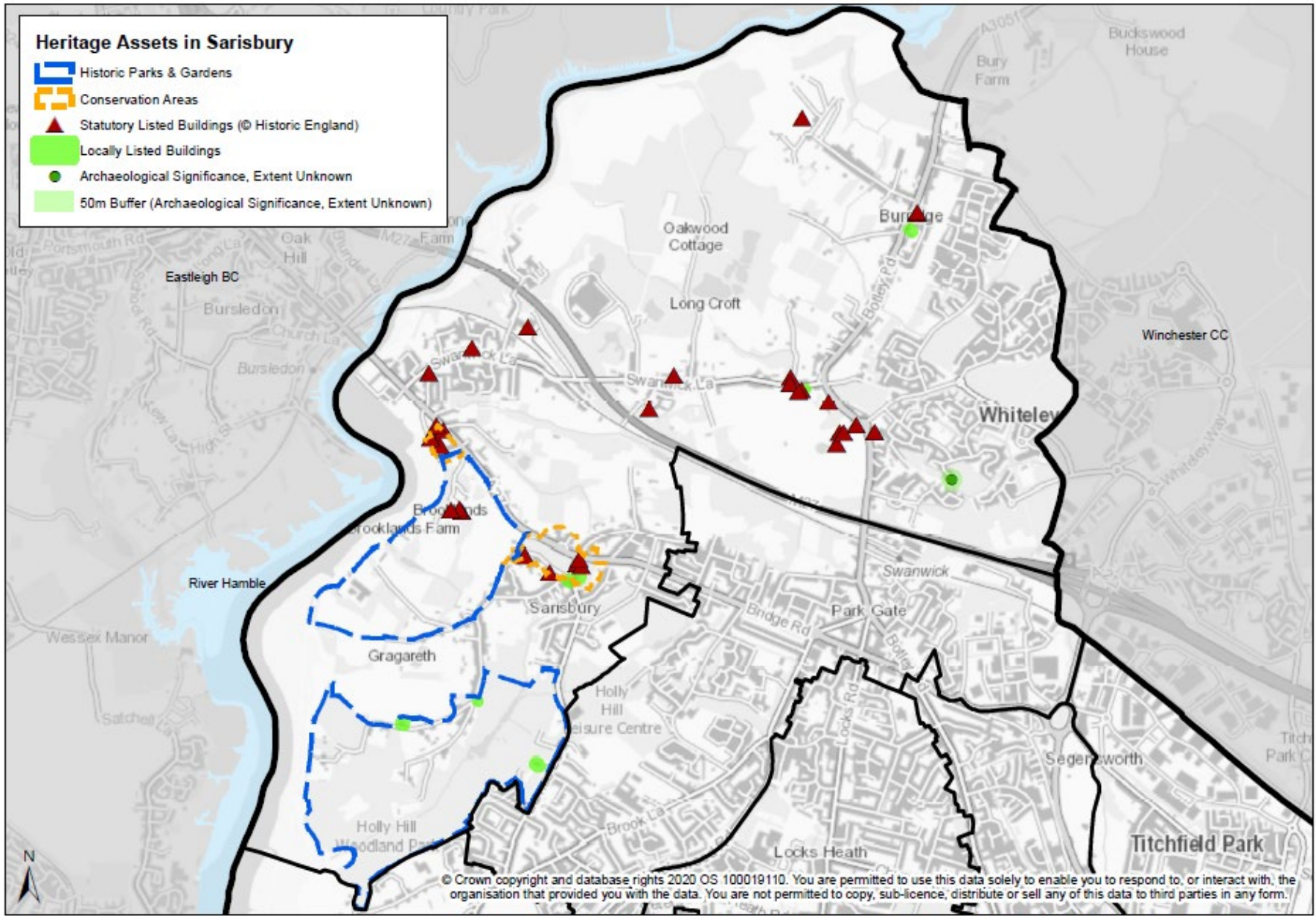
Heritage Assets in Portchester East

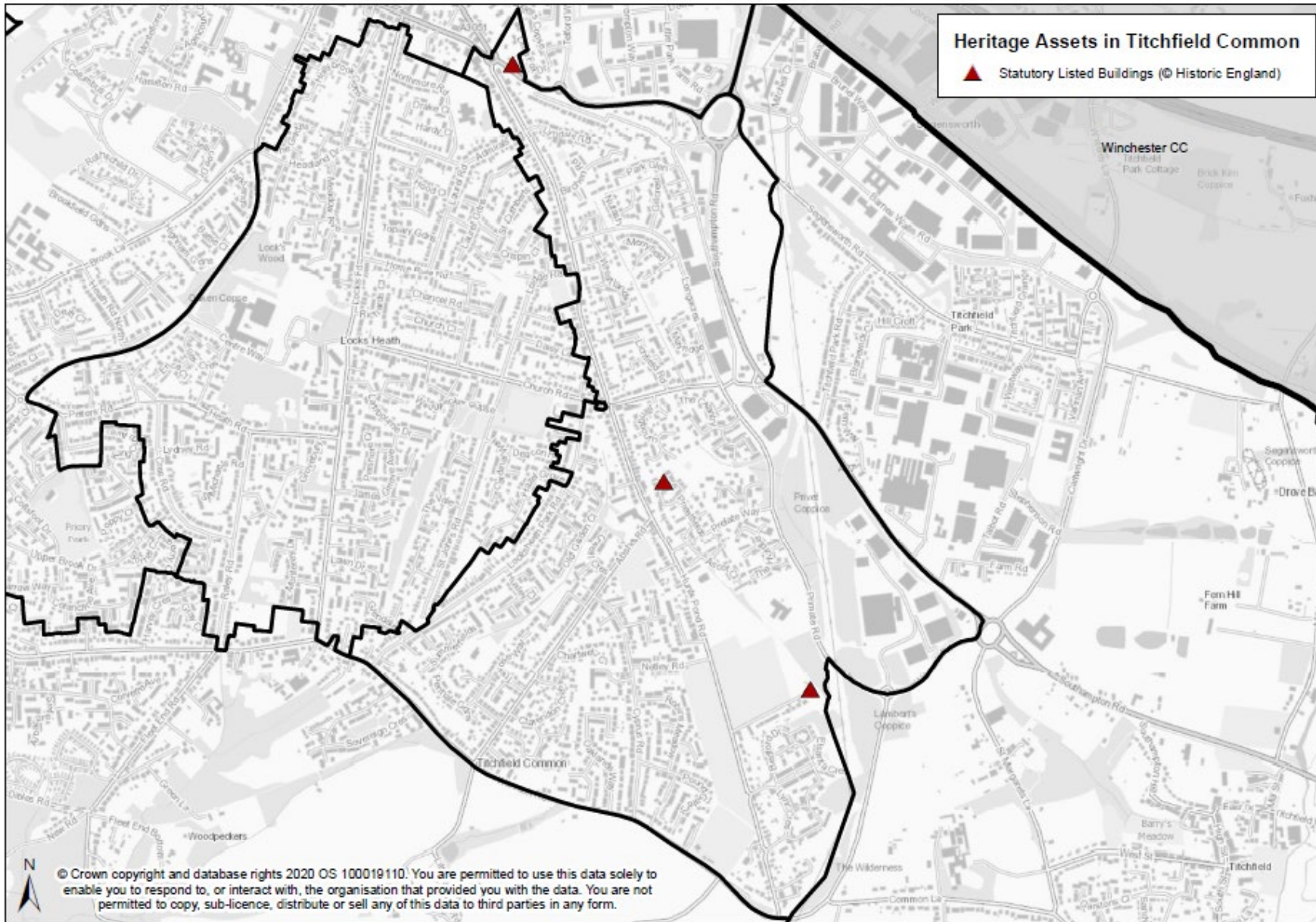
-  Conservation Areas
-  Statutory Listed Buildings (© Historic England)
-  Locally Listed Buildings
-  Nationally Important Sites (SAMs)
-  Nationally Important Sites not Scheduled
-  Known Archaeological Importance and Extent
-  50m Buffer (Nationally Important Sites)
-  50m Buffer (Known Archaeological Importance and Extent)

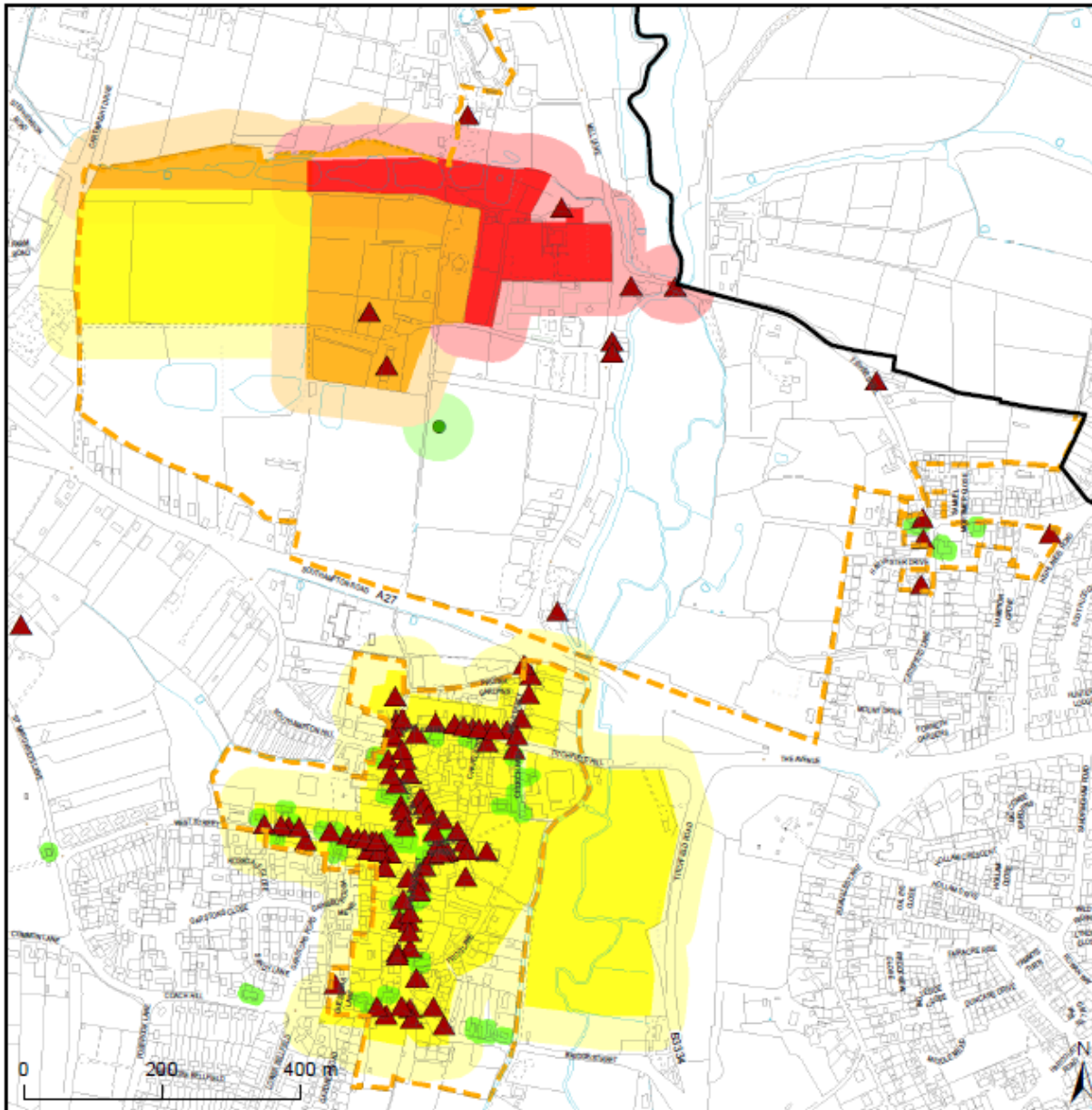


© Crown copyright and database rights 2020 OS 100019110. You are permitted to use this data solely to enable you to respond to, or interact with, the organisation that provided you with the data. You are not permitted to copy, sub-licence, distribute or sell any of this data to third parties in any form.



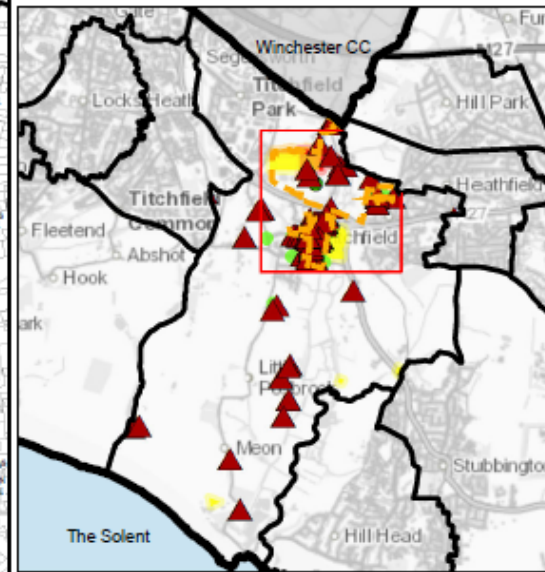




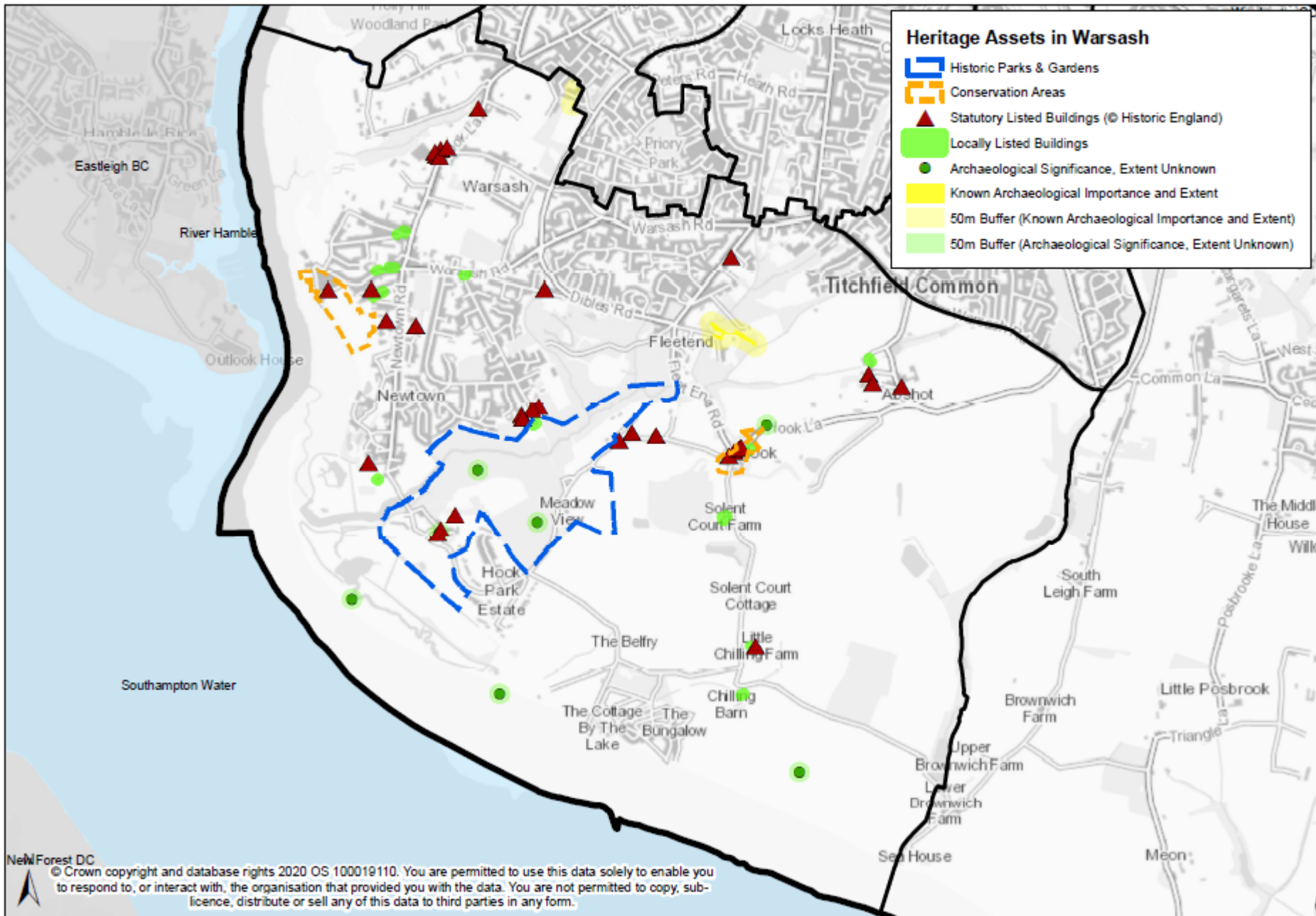


Heritage Assets in Titchfield

-  Conservation Areas
-  Statutory Listed Buildings (© Historic England)
-  Locally Listed Buildings
-  Nationally Important Sites (SAMs)
-  Nationally Important Sites not Scheduled
-  Known Archaeological Importance and Extent
-  Archaeological Significance, Extent Unknown
-  50m Buffer (Nationally Important Sites)
-  50m Buffer (Nationally Important Sites not Scheduled)
-  50m Buffer (Known Archaeological Importance and Extent)
-  50m Buffer (Archaeological Significance, Extent Unknown)



© Crown copyright and database rights 2020 OS 100019110. You are permitted to use this data solely to enable you to respond to, or interact with, the organisation that provided you with the data. You are not permitted to copy, sub-licence, distribute or sell any of this data to third parties in any form.



Appendix 2 - Nationally Listed Heritage in the Borough as at January 2020

| ListEntry | Name | Grade |
|-----------|--|-------|
| 1094235 | Monastic Barn Of Titchfield Abbey At Fern Hill Farm | I |
| 1229190 | Portchester Castle | I |
| 1339235 | Church Of St Mary | I |
| 1351279 | Parish Church Of St Peter | I |
| 1093501 | Granary To East Of Rookery Farmhouse | II |
| 1093502 | 159, Botley Road | II |
| 1093504 | 3, Bridge Street | II |
| 1093505 | Barn To South East Of No 3 | II |
| 1093506 | 2-10, Bridge Street | II |
| 1093507 | 12 And 14, Bridge Street | II |
| 1093508 | Great Brook | II |
| 1093509 | Former Barn To North East Of No 69 (Great Brook) | II |
| 1093510 | Former Barn To South Of No 69 (Great Brook) | II |
| 1093511 | Outbuilding Attached To North West End Of South Barn At No 69 (Great Barn) | II |
| 1093512 | Brownwich Farmhouse | II |
| 1093513 | 1-5, Burnt House Lane | II |
| 1093514 | Down End Cottages | II |
| 1093515 | Lychgate At Entrance To St Mary's Churchyard | II |
| 1093516 | White Lodge | II |
| 1093517 | 129, Castle Street | II |
| 1093518 | 131 And 133, Castle Street | II |
| 1093519 | 155, Castle Street | II |
| 1093520 | Gate And Railings To East Of No 169 (St Vincent) | II |
| 1093521 | Thatched Cottage | II |
| 1093522 | Narborough House | II |
| 1093539 | Burley Cottage | II |
| 1093541 | Blackbrook Lodge | II |
| 1093542 | Downbarn Cottage | II |
| 1093543 | Downbarn Farmhouse | II |
| 1093544 | Yew Tree Farmhouse | II |
| 1094202 | Holy Trinity Rectory | II |
| 1094203 | Ellesmere House | II |
| 1094204 | Front Garden Wall At Wyngreen | II |
| 1094205 | The Vicarage | II |
| 1094206 | Front Garden Wall And Gate Piers At No 30 (The Vicarage) | II |
| 1094207 | Front Garden Wall And Gate Piers At No 38 (Hawkstone House) | II |
| 1094225 | Great Abshot House | II |
| 1094226 | Little Abshot Farmhouse | II |
| 1094227 | Curtis Depository | II |
| 1094228 | Prospect House | II |
| 1094229 | Fishermans Cottage | II |

| | | |
|---------|--|----|
| 1094230 | 11 And 12, Lower Quay | II |
| 1094231 | Ladyline Limited, The Mill | II |
| 1094232 | Fareham Motor Boat And Sailing Club House | II |
| 1094233 | Fort Wallington | II |
| 1094234 | Segensworth House | II |
| 1094236 | Barn At Carron Row Farm | II |
| 1094237 | 3, Mill Street | II |
| 1094238 | Nos 7 To 19 (Including Former Malthouse Adjacent To Nom13) | II |
| 1094239 | Oneday Cottage | II |
| 1094240 | Fort Fareham | II |
| 1094241 | Iron Bridge At Fort Fareham | II |
| 1094242 | Foxbury Cottages and Foxbury Farmhouse | II |
| 1094243 | Former Barn Attached To No 1 | II |
| 1094244 | 40-43, North Wallington | II |
| 1094247 | Street Lamp Outside Number 70 | II |
| 1094248 | 71, High Street | II |
| 1094249 | 72-74, High Street | II |
| 1094250 | 77A, High Street (See Details For Further Address Information) | II |
| 1094251 | 78, High Street | II |
| 1094252 | Old Lodge Cottage | II |
| 1094253 | War Memorial | II |
| 1094254 | 15-19, High Street | II |
| 1094255 | 33, High Street | II |
| 1094256 | 8, High Street | II |
| 1094257 | 20-24, High Street | II |
| 1094258 | Numbers 36 And 38 (At Rear Of Number 34) | II |
| 1094259 | Outbuilding Behind The Bugle Hotel | II |
| 1094260 | The Nook | II |
| 1094261 | Blacksmiths House At The Forge | II |
| 1094262 | The Old Smithy At The Forge | II |
| 1094263 | Walls Attached To Each End Of Old Dormy House | II |
| 1094264 | Post Box Cottage | II |
| 1094265 | Funtley House | II |
| 1094266 | Brook House | II |
| 1094267 | Littlecroft | II |
| 1094268 | 1, High Street | II |
| 1094269 | 2, High Street | II |
| 1094270 | 3 And 3a, High Street | II |
| 1094271 | 6, High Street | II |
| 1094274 | 18, High Street | II |
| 1094275 | 19, High Street | II |
| 1094276 | Lothian House | II |
| 1094277 | The Golden Lion Public House | II |
| 1094278 | Old Sweetshop Cottage | II |
| 1094279 | 34-36, High Street | II |

| | | |
|---------|--|----|
| 1094280 | The Old Vicarage | II |
| 1094281 | Vicar's Hill | II |
| 1094282 | 49 And 50, High Street | II |
| 1094283 | Street Lamp In Front Of Number 50 | II |
| 1094284 | 52 And 53, High Street | II |
| 1094285 | 55 And 56, High Street | II |
| 1094286 | 58-60, High Street | II |
| 1094287 | 61 And 62, High Street | II |
| 1094288 | Street Lamp Outside Numbers 65 And 66 | II |
| 1094289 | 11, Church Street | II |
| 1094290 | The Vicarage | II |
| 1094291 | Low Boundary Walls, Memorials, Table Tombs In The Churchyard Of St Peters Parish Church (The Old Churchyard West Of Church Path To Castle Street Footpath) | II |
| 1094292 | 10-14, Church Street | II |
| 1094293 | Surgery | II |
| 1094294 | Belvedere | II |
| 1094295 | Crabthorn Farm Cottage & Crabthorn Farmhouse | II |
| 1094296 | Cuckoo Cottage | II |
| 1094297 | Old Street Farmhouse | II |
| 1094298 | East Hill | II |
| 1094299 | Fareham House | II |
| 1094300 | The Red Lion Hotel | II |
| 1094301 | Burpham House | II |
| 1094302 | Murrills | II |
| 1094303 | 7-13, East Street | II |
| 1094304 | 19 And 21, East Street | II |
| 1094305 | 23 And 25, East Street | II |
| 1094306 | Kings Row | II |
| 1094307 | 6 And 8, East Street | II |
| 1094308 | Post Office | II |
| 1094309 | Jolly Farmer Public House | II |
| 1094310 | Church Of St Francis | II |
| 1094311 | 195, Castle Street (See Details For Further Address Information) | II |
| 1094312 | 199, Castle Street | II |
| 1094313 | Crown House | II |
| 1094314 | Hope Cottage | II |
| 1094315 | Pendeen Cottage and Rover Cottage | II |
| 1094316 | The White House | II |
| 1094317 | Golden Cot | II |
| 1094318 | Walnut Cottage | II |
| 1094319 | 158, Castle Street | II |
| 1094320 | Dovercroft | II |
| 1094321 | Myrtle Cottage | II |
| 1094322 | Oriel Cottage | II |

| | | |
|---------|---|----|
| 1094323 | Bowery Cottage | II |
| 1094324 | The Old Bakehouse | II |
| 1094325 | Duckett House & Rosemary | II |
| 1094326 | 1-5, Catisfield Lane | II |
| 1094327 | Little Chilling (2 Cottages) | II |
| 1094328 | Manor Cottage | II |
| 1094329 | Manor House | II |
| 1094330 | Gate Piers And Front Garden Wall At Manor Lodge | II |
| 1094331 | 1, Church Place | II |
| 1094333 | 7, Church Street | II |
| 1141166 | 17 High Street | II |
| 1229113 | Little Brook | II |
| 1229120 | Barn To South West Of Brownwich Farmhouse | II |
| 1229142 | Meoncross Girls School | II |
| 1229289 | Churchyard Wall At St Mary's Churchyard | II |
| 1229293 | Reef Cottage | II |
| 1229309 | Street Boundary Wall To North West Of No 153 (Vine Cottage) | II |
| 1229310 | St Vincent Cottage | II |
| 1229347 | Street Boundary Wall To South East Of No 171 (St Vincent Cottage) | II |
| 1229355 | 189, Castle Street | II |
| 1229412 | Hythe Cottage | II |
| 1229423 | 164a And 164b, Castle Street | II |
| 1229438 | 168, Castle Street | II |
| 1229446 | Street Boundary Wall To South East Of No 174 (Wisteria Cottage) | II |
| 1229466 | 190, Castle Street | II |
| 1229534 | Catisfield Cottage | II |
| 1229550 | Meoncross Boys School | II |
| 1229566 | Front Garden Wall At Manor Cottage | II |
| 1229656 | Manor Lodge | II |
| 1229693 | 2, Church Place | II |
| 1229781 | Crofton Farmhouse | II |
| 1229803 | Courts Warehouse | II |
| 1229964 | Rockstone House | II |
| 1229990 | Stony Bridge | II |
| 1230002 | House At Saw Mills (Pink And Company Limited) | II |
| 1230164 | 10 And 11, High Street | II |
| 1230181 | Street Lamp Outside Number 13 | II |
| 1230184 | 20, High Street | II |
| 1230199 | Street Lamp Outside No 21 | II |
| 1230327 | Street Lamp Outside Outside Number 44 | II |
| 1230329 | 48, High Street | II |
| 1230340 | Lysses | II |
| 1230360 | Street Lamp In Front Of Number 52 | II |
| 1230398 | 67, High Street | II |

| | | |
|---------|---|----|
| 1230504 | The Old Lodge | II |
| 1230514 | 5 And 7, High Street | II |
| 1230518 | The Queens Head Hotel | II |
| 1230526 | 31, High Street | II |
| 1230530 | 35, High Street | II |
| 1230540 | 10-16, High Street | II |
| 1230545 | 28-34, High Street | II |
| 1230565 | The Bugle Hotel | II |
| 1230608 | Nook Cottages | II |
| 1230727 | Hazel Cottage | II |
| 1230758 | Portchester House | II |
| 1230965 | Mill House & Titchfield Mill | II |
| 1230990 | Barn At Segensworth House | II |
| 1230997 | Fern Hill Farmhouse | II |
| 1232685 | 1, Mill Street | II |
| 1232689 | 12, Mill Street | II |
| 1232711 | Carriston Cottage | II |
| 1232719 | Farthing House & Hamble House | II |
| 1232722 | 13,14 And 14a, North Wallington | II |
| 1232803 | Front Garden Wall And Gate Piers At No 22 (Ellesmere House) | II |
| 1232811 | Front Garden Wall And Gate Piers At No 26 | II |
| 1232840 | Front Garden Wall And Gate Piers At No 36 (Victoria Lodge) | II |
| 1232855 | Uplands | II |
| 1232876 | Old Park House | II |
| 1232889 | Railway Viaduct | II |
| 1232921 | North Fareham Farmhouse | II |
| 1232924 | 52 Wallington Shore Road | II |
| 1232956 | Stables At Cams Hall Home Farm | II |
| 1232957 | Railway Viaduct | II |
| 1232958 | West Hill Park School | II |
| 1232959 | Rose Cottage | II |
| 1232960 | Former Barn At Shoot Farm | II |
| 1233126 | War Memorial In St Paul's Churchyard | II |
| 1233156 | Oak Cottage | II |
| 1233166 | 5-13, South Street | II |
| 1233190 | 45, South Street | II |
| 1233191 | 14 And 16, South Street | II |
| 1233194 | 32, South Street | II |
| 1233195 | 38, South Street | II |
| 1233204 | 40 And 42, South Street | II |
| 1233205 | 44 And 46, South Street | II |
| 1233206 | Little Park Cottages | II |
| 1233224 | Greenhill Cottage | II |
| 1233225 | Friends Farmhouse | II |

| | | |
|---------|--|----|
| 1233226 | Swanwick Lane | II |
| 1233227 | Morgan's Farmhouse | II |
| 1233228 | Manor Farmhouse | II |
| 1233230 | Lower Swanwick Farmhouse | II |
| 1233231 | Tudor Cottage | II |
| 1233232 | The Hard | II |
| 1233244 | Victory Cottages | II |
| 1233277 | Building Adjacent To No 1 Victory Cottages | II |
| 1233278 | Anker Cottage | II |
| 1233280 | Crofton Manor Hotel | II |
| 1233282 | 5, Titchfield Road | II |
| 1233283 | 123, Titchfield Road | II |
| 1233285 | Hollam House | II |
| 1233286 | Meon Cottage | II |
| 1233289 | Little Posbrook Cottage | II |
| 1233290 | Posbrooke Gardens | II |
| 1233291 | Upper Posbrook Farmhouse | II |
| 1233294 | North Barn At Upper Posbrook Farm | II |
| 1233306 | Malt House Cottage | II |
| 1233308 | 7, Union Street | II |
| 1233388 | Wallington Bridge | II |
| 1233390 | 1 And 3, West Street | II |
| 1233391 | 5, West Street | II |
| 1233393 | The Crown Public House | II |
| 1233394 | United Reformed Church | II |
| 1233396 | Portland Chambers Trustee Savings Bank | II |
| 1233397 | Borough Council Offices Westbury Manor | II |
| 1233398 | War Memorial On Street Boundary Of Holy Trinity Churchyard | II |
| 1233400 | 3, West Street | II |
| 1233401 | 9, West Street | II |
| 1233404 | 15, West Street | II |
| 1233406 | 59, West Street | II |
| 1233407 | Yew Tree Cottage | II |
| 1233475 | 5, West Street | II |
| 1233508 | 17-21, West Street | II |
| 1233519 | Ticfelle Cottage | II |
| 1233530 | 61-69, West Street | II |
| 1233538 | 10, West Street | II |
| 1233541 | 16-22, West Street | II |
| 1233551 | Furze Hall Farmhouse Including Range Of Cowsheds Adjoining To The Rear | II |
| 1233552 | Barn At Furzehall Farm With Outbuilding Adjoining To The West | II |
| 1233649 | Lodge At Boundary Oaks School, Roche Court | II |
| 1233653 | Boundary Oaks School, Roche Court | II |
| 1233655 | The Potteries | II |

| | | |
|---------|---|----|
| 1233849 | 21 And 23, West Street | II |
| 1233866 | The Old Ship Inn | II |
| 1233873 | K6 Telephone Kiosk At Junction With Southampton Hill | II |
| 1233888 | Schoolhouse | II |
| 1233890 | Church Of St Mary | II |
| 1233901 | Screen Wall And Attached Former Farmhouse, Outbuildings And Yard Wall Forming East Side Of Home Farm Yard At Cams Hall | II |
| 1233919 | Cartshed With Loft Over And Attached Farmyard Wall With Outbuildings At Home Farm At Cams Hall | II |
| 1233930 | Pond Wall In Home Farm Yard At Cams Hall | II |
| 1233937 | Meon Marsh Sealock And Bridge | II |
| 1233939 | 6,6a And 8, West Street | II |
| 1233961 | Barn To Rear Of Morgan's Farmhouse | II |
| 1249613 | Cadets' Residence (Hudson, Shackleton And Wilson), Linked Walkway And Refectory Block (Moyana), At The Warsash Maritime Academy | II |
| 1249663 | Garden Cottage | II |
| 1249666 | Place House Cottages | II |
| 1249670 | Place House Cottages And Garden Boundary Wall Adjoining East | II |
| 1263646 | Ice House Adjoining Garden Cottage | II |
| 1276379 | Lychgate To Church Of St Mary | II |
| 1276382 | L Shaped Barn Range On West Side Of Home Farm Yard At Cams Hall With Yard Walls Attached At South East And North East Corners | II |
| 1276383 | Former Farmhouse And Attached Yard Wall On North West Side Of Home Farm Yard At Cams Hall | II |
| 1276354 | Dovecote At Cams Hall, To South West Of Stables | II |
| 1276355 | Walled Garden With Attached Garden House And Outbuildings At Cams Hall | II |
| 1276635 | 15, West Street | II |
| 1276639 | 27, West Street | II |
| 1276640 | 49, West Street | II |
| 1276648 | 1, Union Street | II |
| 1276654 | 3, Union Street | II |
| 1276661 | Lower Posbrook Farmhouse | II |
| 1276668 | 2, Union Street | II |
| 1276670 | 8 And 9, Union Street | II |
| 1276671 | Corrall's Office Building | II |
| 1276681 | Bay Tree Cottages | II |
| 1276730 | 25, South Street | II |
| 1276731 | 41 And 43, South Street | II |
| 1276732 | 6 And 8, South Street | II |
| 1276733 | 20 Andf 22, South Street | II |
| 1276755 | The Anchorage & The Watch | II |
| 1276405 | Hook With Warsash Infants School | II |
| 1276483 | 45 And 47, Newton Road | II |
| 1276532 | Garage At No 10 (Former Village Forge) | II |
| 1276537 | 36-40, West Street | II |

| | | |
|---------|---|----|
| 1276552 | West Court & West Court Cottage | II |
| 1276554 | Two Chapels At Fareham Cemetery | II |
| 1276696 | 117, Titchfield Road | II |
| 1276711 | Thatched Cottage | II |
| 1276772 | Church Of St Paul | II |
| 1276780 | Building In The Garden Of The Georgian House, St Margarets Priory and The Old Malt House | II |
| 1276819 | Lychgate To St Pauls's Churchyard | II |
| 1276820 | Shoot Farmhouse | II |
| 1276821 | 19, South Street | II |
| 1276838 | 67, Park Lane | II |
| 1276855 | Gate Piers At No 61 (Uplands) | II |
| 1276856 | Heathfield Manor | II |
| 1276862 | Orangery At Cams Hall | II |
| 1276879 | Boundary Wall To Horseshoe Cottage (Also Forms Lower Part Of House And Wall | II |
| 1276884 | Northwood House | II |
| 1276902 | Front Garden Wall And Gate Piers At No 28 | II |
| 1276912 | Front Garden Wall And Gate Piers At No 32 (Bembridge House Flats 1,2,3 And 4 | II |
| 1276957 | No 5 (Including Garage At Side) | II |
| 1278376 | Second Fareham Sea Scout Headquarters | II |
| 1278384 | Earl's Charity | II |
| 1278467 | Old Dormy House | II |
| 1278627 | 63, High Street | II |
| 1278676 | 33, High Street | II |
| 1278692 | 26 And 27, High Street | II |
| 1278808 | Glen House | II |
| 1278847 | 2, East Street | II |
| 1278871 | Eastleigh House | II |
| 1278877 | 15 And 17, East Street | II |
| 1278895 | 1, East Street | II |
| 1278901 | 9-13, East Street | II |
| 1278908 | 3 And 5, East Street | II |
| 1278930 | The Thatched Cottage | II |
| 1278934 | North And West Boundary Walls, Altar Tombs And Memorials In The Churchyard Of The Parish Church Of St Peter And St Paul | II |
| 1278957 | Manor Croft | II |
| 1279090 | Lyme Cottage | II |
| 1279132 | Little Willow | II |
| 1279167 | Noel Cottage | II |
| 1279200 | 8 And 9, Cams Hill | II |
| 1338886 | 9, Lower Quay | II |
| 1338887 | Rope Walk Cottage | II |
| 1338888 | Thatched Cottage | II |
| 1338889 | Fishermans Arms | II |

| | | |
|---------|--|----|
| 1338890 | Abbey Cottage (Now Divided Into 2 Houses) | II |
| 1338891 | 1-8, North Wallington | II |
| 1338892 | Great Crabthorn | II |
| 1338893 | Former Stables At Kintyre House | II |
| 1338895 | Number 75 Including Rear Wing | II |
| 1338896 | 76, High Street | II |
| 1338897 | Street Lamp To Number 76 | II |
| 1338898 | 79, High Street | II |
| 1338899 | Kames Cottage | II |
| 1338900 | 29, High Street | II |
| 1338912 | Churchyard Walls To St Peter And St Pauls Church | II |
| 1338913 | Front Garden Wall And Gate Piers At No 24 | II |
| 1338914 | Front Garden Wall At Medecroft | II |
| 1338915 | Front Garden Wall And Gate Piers At No 34 (Nos 1 And 2 Wilton Lodge) | II |
| 1339236 | Lamp In St Mary's Churchyard | II |
| 1339237 | 67-73, Castle Street | II |
| 1339238 | Vine Cottage | II |
| 1339239 | Former Barn To South Of No 157 | II |
| 1339240 | St Ambrose | II |
| 1339249 | Gate Piers At Bishopwood | II |
| 1339250 | Blackbrook House Maternity Home | II |
| 1339251 | Caigers Green | II |
| 1339252 | Rookery Farmhouse | II |
| 1339269 | Yew Tree Villa | II |
| 1339270 | Granary To South East Of No 69 (Great Brook) | II |
| 1339271 | Rose Cottage | II |
| 1339272 | Burridge Farmhouse | II |
| 1351244 | Toby Cottage | II |
| 1351245 | 3-7, East Street | II |
| 1351246 | Old Clarendon House | II |
| 1351247 | Huntsmans Cottage And 2 Adjoining Cottages | II |
| 1351248 | Mission Room With Cottage Adjoining | II |
| 1351249 | 197, Castle Street | II |
| 1351250 | Churchill Cottage | II |
| 1351251 | 211, Castle Street | II |
| 1351252 | Castle Cottage | II |
| 1351253 | 94, Castle Street | II |
| 1351254 | The Retreat | II |
| 1351255 | Pylewell House | II |
| 1351256 | Wisteria Cottage | II |
| 1351257 | Gate Piers And Front Garden Wall At Manor House | II |
| 1351258 | Gate Piers And Front Garden Wall At Manor Croft | II |
| 1351259 | 5, Church Street | II |
| 1351264 | 4 And 6, High Street | II |
| 1351265 | Sydney House | II |

| | | |
|---------|--|-----|
| 1351266 | Hook Cottage | II |
| 1351267 | Course House | II |
| 1351268 | Holy Rood Church | II |
| 1351269 | Yew Tree Cottage | II |
| 1351270 | Street Lamp Outside Number 2 | II |
| 1351271 | 4 And 5, High Street | II |
| 1351272 | 8 And 8a, High Street | II |
| 1351274 | 21, High Street | II |
| 1351275 | 23-25, High Street | II |
| 1351276 | Street Lamp Outside Number 57 | II |
| 1351277 | 64, High Street | II |
| 1351278 | 9, Church Street | II |
| 1351280 | 2 And 4, Church Street | II |
| 1351281 | 2, Coach Hill | II |
| 1351282 | 7, Coach Hill | II |
| 1351283 | Smugglers Cottage | II |
| 1351286 | The Stables Of Great Abshot House | II |
| 1351287 | Little Park Farmhouse (Now Divided Into 2 Houses) | II |
| 1351288 | 2, Lower Quay | II |
| 1365294 | Swanwick Barn And Cart Shed About 40 Metres South Of Rookery Farmhouse | II |
| 1391981 | Baptist Chapel | II |
| 1392315 | The Wall Surrounding The Walled Garden Of The Former Hook House | II |
| 1392316 | Bishopsgrove | II |
| 1392415 | The Grange | II |
| 1093503 | Brooklands | II* |
| 1093540 | Bishopwood | II* |
| 1094245 | Fareham And County Club | II* |
| 1094246 | 69, High Street | II* |
| 1094272 | 7, High Street | II* |
| 1094273 | 12, High Street | II* |
| 1094332 | Parish Church Of St Peter And St Paul | II* |
| 1230370 | Roseneath | II* |
| 1232890 | Cams Hall | II* |
| 1233024 | Great Posbrook | II* |
| 1233029 | Southern Barn At Great Posbrook Farm | II* |
| 1233279 | Crofton Old Church | II* |
| 1233542 | The Old Manor House | II* |
| 1233656 | Dean Farmhouse | II* |
| 1233725 | Brick Kiln, Chimney, Drying Sheds, Boiler And Engine House At Bursledon Brickworks South Section | II* |
| 1276734 | 28-30, South Street | II* |
| 1276622 | Church of the Holy Trinity | II* |
| 1276854 | Tudor Wing, West Wing And Georgian House, St Margarets Priory | II* |
| 1338894 | Kintyre House | II* |

| | | |
|---------|-------------------|-----|
| 1351273 | 13-16 High Street | II* |
|---------|-------------------|-----|

Appendix 3 – Locally Listed Buildings in the Borough as at January 2020

| Listed Building reference | List Name | Number of buildings in list item |
|---------------------------|--|----------------------------------|
| LB/1/55 | Former House, The Surgery, 15 East Street, Fareham | 1 |
| LB/1/80 | 9 & 11 West Street, Fareham | 2 |
| LB/1/81 | 13 West Street, Fareham | 1 |
| LB/1/83 | 17 & 19 West Street, Fareham | 2 |
| LB/10/190 | 46 Titchfield Road, Stubbington | 1 |
| LB/10/191 | 48 Titchfield Road, Stubbington | 1 |
| LB/10/196 | Former reading room, 1 & 3 Gosport Road, Stubbington | 2 |
| LB/11/217 | 175 Castle Street, Portchester | 1 |
| LB/11/222 | Nelson Cottages, 163 & 165 Castle Street, Portchester | 2 |
| LB/11/224 | 157 Castle Street, Portchester | 1 |
| LB/11/243 | The Cottage, 196 Castle Street, Portchester | 1 |
| LB/14/258 | Farm Buildings at Solent Court, Chilling Lane, Hook | 1 |
| LB/14/261 | Wellside Cottages, 1 & 2 Hook lane, Hook | 2 |
| LB/14/269 | Barn to north of Great Abshot Farm, Little Abshot Road, Hook | 1 |
| LB/15/11004 | Dairy Cottage, 2 Thornton Avenue, Warsash | 1 |
| LB/15/11005 | Petrol House, 1 & 2 Clocktower Building & 4, 6, 8, 10, 12, 14, 16 & 18 Shore Road, Warsash | 10 |
| LB/15/11016 | 1 Church Road, Warsash | 1 |
| LB/15/119 | The Old Dovecote, Crofton Way, Warsash | 1 |
| LB/15/270 | 34 & 36 Shore Road, Warsash | 2 |
| LB/15/272 | 1, 2 & 3 Warsash Cottages, Havelock Road, Warsash | 3 |
| LB/15/273 | Rose Cottage, Havelock Road, Warsash | 1 |
| LB/15/524 | Outbuilding along street facade to north of granary at Great Brook, Brook Lane, Warsash | 1 |
| LB/16/290 | Granary at Friends Farm, Swanwick Lane, Swanwick | 1 |
| LB/2/102 | Former Fareham County Primary School, Ashcroft Arts, Osborn Road, Fareham | 1 |
| LB/2/108 | 37, 38 & 39 North Wallington, Wallington | 3 |
| LB/2/110 | Former brewery behind the White Horse, Drift Road, Wallington | 1 |
| LB/2/11013 | 36 Osborn Road, Fareham | 1 |
| LB/2/11014 | 38 Osborn Road, Fareham | 1 |
| LB/2/98 | 45 High Street, Fareham | 1 |
| LB/20/301 | Wall to south of former Shoot Farmhouse, Shoot Lane, Chark Common | 1 |
| LB/20/306 | Former granary at Peel Farm, Newgate Lane, Fareham | 1 |
| LB/20/308 | Barn at Foxbury Farm, Newgate lane, Peel Common | 1 |
| LB/20/309 | Newgate Cottage, Newgate Lane, Peel Common | 1 |
| LB/21/323 | 30 Cams Hill, Fareham | 1 |
| LB/21/325 | Downend Farmhouse, Paradise Lane, Fareham | 1 |
| LB/21/330 | Hill Farm Cottage, 18 Highlands Road, Fareham | 1 |
| LB/21/331 | Cottages known as Holly Cottages, 3 & 4 Holly Grove, Fareham | 2 |
| LB/21/345 | Bridge over River Wallington adj. Spurlings farm, Pook Lane | 1 |
| LB/21/346 | Spurlings Farm Cottages, Pook Lane, Fareham | 1 |
| LB/21/348 | Barn at Park View Cottages, Pook Lane, Fareham | 1 |
| LB/21/363 | Uplands Cottage, Old Turnpike, Fareham | 1 |
| LB/22/364 | Barn at Crockerhill Farm, Forest Lane, Fareham | 1 |
| LB/22/365 | Crockerhill Farm, Forest Lane, Fareham | 1 |
| LB/23/367 | Barn at Great Chilling Farm, Chilling Lane, Hook | 1 |

| | | |
|-------------|---|----|
| LB/23/368 | Granary to west of Little Chilling, Chilling Lane, Hook | 1 |
| LB/24/11000 | Mansion & various buildings at Coldest Hospital, Bridge Road, Locks Heath | 1 |
| LB/24/11001 | Holly Hill Mansion, Barnes Lane, Warsash | 1 |
| LB/24/11007 | 14 Beacon Bottom, Park Gate | 1 |
| LB/24/11008 | The Parish Rooms, 217 Barnes Lane, Sarisbury | 1 |
| LB/24/11009 | 216-220 Barnes Lane, Sarisbury | 1 |
| LB/24/397 | Littlecroft and adjoining house, 27 & 35 Catisfield Lane, Catisfield | 1 |
| LB/24/398 | The Cottage, 23 Catisfield Lane, Catisfield | 1 |
| LB/24/400 | Elm Cottage, Catisfield Lane, Catisfield | 1 |
| LB/25/11006 | Fairlawns, 266 Botley Road, Burridge | 1 |
| LB/27/11002 | Inwood, Holly Hill Lane, Sarisbury | 1 |
| LB/27/11003 | Fynone, 91 Holly Hill Lane, Sarisbury | 1 |
| LB/27/424 | Church Lodge, Church Road, Warsash | 1 |
| LB/27/425 | Newtown Farmhouse, Newtown Road, Warsash | 1 |
| LB/3/11015 | Lowlands, Wallington Shore Road | 1 |
| LB/3/111 | 2, 3, 4, 5 & 6 Cams Hill, Fareham | 5 |
| LB/3/113 | 11, 12 & 13 Cams Hill, Fareham | 3 |
| LB/4/134 | 7, 9 & 11 Mill Road, Fareham | 3 |
| LB/4/135 | 13 Mill Road, Fareham | 1 |
| LB/4/136 | 15, 17, 19, 21, 23, 25, 27, 29 & 31 Mill Road, Fareham | 9 |
| LB/4/497 | Former warehouse at eastern entrance to Lower Quay Close, Lower Quay Close, Fareham | 1 |
| LB/5/11010 | 28 Osborn Road, Fareham | 1 |
| LB/5/11011 | 32 Osborn Road, Fareham | 1 |
| LB/5/11012 | 34 Osborn Road, Fareham | 1 |
| LB/5/120 | 59, 61 & 63 Trinity Street, Fareham | 3 |
| LB/5/121 | 65 & 67 Trinity Street, Fareham | 2 |
| LB/5/144 | 149 West Street, Fareham | 1 |
| LB/5/145 | 179, 179a & 181 West Street, Fareham | 3 |
| LB/5/146 | 205 & 205c West Street, Fareham | 2 |
| LB/5/147 | 207 West Street, Fareham | 1 |
| LB/5/148 | 209 & 211 West Street, Fareham | 2 |
| LB/5/154 | 160, 162, 164, 166, 168, 170, 172, 174, 176, 178, 180, 182 & 184 West Street, Fareham | 13 |
| LB/5/166 | 84 Trinity Street, Fareham | 1 |
| LB/5/168 | Former Lodge, 1 Park Lane, Fareham | 1 |
| LB/5/522 | 9, 11, 13 & 15 Trinity Street, Fareham | 4 |
| LB/6/11017 | 37-41 High Street (The Square), Titchfield | 3 |
| LB/6/11018 | 1 Coach House Mews, South Street, Titchfield | 1 |
| LB/6/11019 | The Parish Rooms, High Street, Titchfield | 1 |
| LB/6/121 | 28 Bridge Street, Titchfield | 1 |
| LB/6/253 | 32 Bridge Street, Titchfield | 1 |
| LB/6/257 | 30 Bridge Street, Titchfield | 1 |
| LB/6/324 | 1 Church Path, Titchfield | 1 |
| LB/6/325 | 5, 7, 9, 11, 13, 15 & 17 Church Path, Titchfield | 7 |
| LB/6/332 | 36 & 38 Bridge Street, Titchfield | 2 |
| LB/6/333 | 2, 4 & 6 Frog Lane, Titchfield | 3 |
| LB/6/354 | 19 & 21, Church Path, Titchfield | 2 |
| LB/6/355 | 2 Church Path, Titchfield | 1 |
| LB/6/356 | 4 Church Path, Titchfield | 1 |
| LB/6/357 | 1 & 2 Church Street, Titchfield | 2 |
| LB/6/433 | 3 Coach Hill, Titchfield | 1 |

| | | |
|----------|---|---|
| LB/6/434 | 5 Coach Hill, Titchfield | 1 |
| LB/6/446 | 14, 16 & 18 East Street, Titchfield | 3 |
| LB/6/447 | 22, 24 & 26 East Street, Titchfield | 3 |
| LB/6/456 | 25 & 25a, High Street, Titchfield | 2 |
| LB/6/470 | 44 High Street, Titchfield | 1 |
| LB/6/471 | 46 High Street, Titchfield | 1 |
| LB/6/478 | 21 South Street, Titchfield | 1 |
| LB/6/485 | 24 & 26 South Street, Titchfield | 2 |
| LB/6/491 | 1 West Street, Titchfield | 1 |
| LB/6/493 | Outbuilding adjoining east side of 3 West Street, Titchfield | 1 |
| LB/6/502 | 33 West Street, Titchfield | 1 |
| LB/6/504 | Ridgeway Cottages, 39 & 41 West Street, Titchfield | 2 |
| LB/6/506 | 53 West Street, Titchfield | 1 |
| LB/6/507 | Paddock Cottage, 57 West Street, Titchfield | 1 |
| LB/6/511 | Clematis Cottage, 73 West Street, Titchfield | 1 |
| LB/6/515 | Old Inn House, 26 & 28 West Street, Titchfield | 2 |
| LB/6/517 | 44 West Street, Titchfield | 1 |
| LB/6/518 | 13, 15 & 17 Coach Hill, Titchfield | 3 |
| LB/8/171 | Lodge at Westhill Park, St Margarets Lane, Titchfield | 1 |
| LB/8/172 | Cart shed & Pigsties at Great Posbrook Farm, Posbrook lane, Titchfield | 1 |
| LB/8/520 | Store to north west of eastern barn at Great Posbrook Farm, Posbrook lane, Titchfield | 1 |
| LB/8/521 | Small barn between cart shed and Great Posbrook, Posbrook lane, Titchfield | 1 |
| LB/9/176 | Former granary at Crabthorn Farmhouse, Farm Lane, Hill Head | 1 |
| LB/9/180 | Granary at south east of Crofton Farmhouse, Crofton Lane, Hill Head | 1 |
| LB/9/182 | 85 Stubbington Lane, Stubbington | 1 |

Glossary

Archaeological interest

There will be archaeological interest in a heritage asset if it holds, or potentially may hold, evidence of past human activity worth of expert investigation at some point. Heritage assets with archaeological interest are the primary source of evidence about the substance and evolution of places, and of the people and cultures that made them.

Conservation

The process of maintaining and managing change to a heritage asset in a way that sustains and, where appropriate, enhances its significance.

Designated heritage asset

A World Heritage Site, Scheduled Monument, Listed Building, Protected Wreck Site, Registered Park and Garden, Registered Battlefield or Conservation Area designated under the relevant legislation.

Development plan

This includes adopted Local Plans, neighbourhood plans and the London Plan, and is defined in section 38 of the Planning and Compulsory Purchase Act 2004.

Heritage asset

A building, monument, site, place, area or landscape identified as having a degree of significance meriting consideration in planning decisions, because of its heritage interest. Heritage asset includes designated heritage assets and assets identified by the local planning authority (including local listing).

Historic environment

All aspects of the environment resulting from the interaction between people and places through time, including all surviving physical remains of past human activity, whether visible, buried or submerged, and landscaped and planted or managed flora.

Historic environment record

Information services that seek to provide access to comprehensive and dynamic resources relating to the historic environment of a defined geographic area for public benefit and use.

Local planning authority

The public authority whose duty it is to carry out specific planning functions for a particular area. All references to local planning authority apply to the district council, London borough council, county council, Broads Authority, National Park Authority and the Greater London Authority, to the extent appropriate to their responsibilities.

Local Plan

The plan for the future development of the local area, drawn up by the local planning authority in consultation with the community. In law this is described as the development plan documents adopted under the Planning and Compulsory Purchase Act 2004. Current core strategies or other planning policies, which under the regulations would be considered to be development plan documents, form part of the Local Plan. The term includes old policies which have been saved under the 2004 Act.

Setting of a heritage asset

The surroundings in which a heritage asset is experienced. Its extent is not fixed and may change as the asset and its surroundings evolve. Elements of a setting may make a positive or negative contribution to the significance of an asset, may affect the ability to appreciate that significance or may be neutral.

Significance

The value of a heritage asset to this and future generations because of its heritage interest. That interest may be archaeological, architectural, artistic or historic. Significance derives not only from a heritage asset's physical presence, but also from its setting.