

Council Tax Guide 2022/23

Welcome to your Council Tax guide

This brief guide will explain how your Council Tax helps to pay for the services Fareham Borough Council provides across the Borough.

Fareham's part of the Council Tax increases

Following a consultation with residents living in the Fareham Borough, it has become clear that an increase in Council Tax is necessary to ensure that residents continue to receive the same high level of service they have come to expect.

In the Local Government Finance Settlement 2021 the referendum limits for local authorities were set out and Council Tax increases that exceed 2% would trigger a referendum. However, the government has also allowed shire districts to raise their Council Tax by a maximum of £5 when compared to the previous level, before a referendum is triggered.

As this settlement was for one year only, there

remains the details of the Fair Funding Review which, as a result of the COVID-19 pandemic, has been delayed further until at least 2023/24. With the outcome of this review unclear, it is important that the Council continues to identify and secure cash-releasing efficiencies each year in order to maintain the high level of service currently provided and continue to achieve its corporate priority to minimise Council Tax increases.

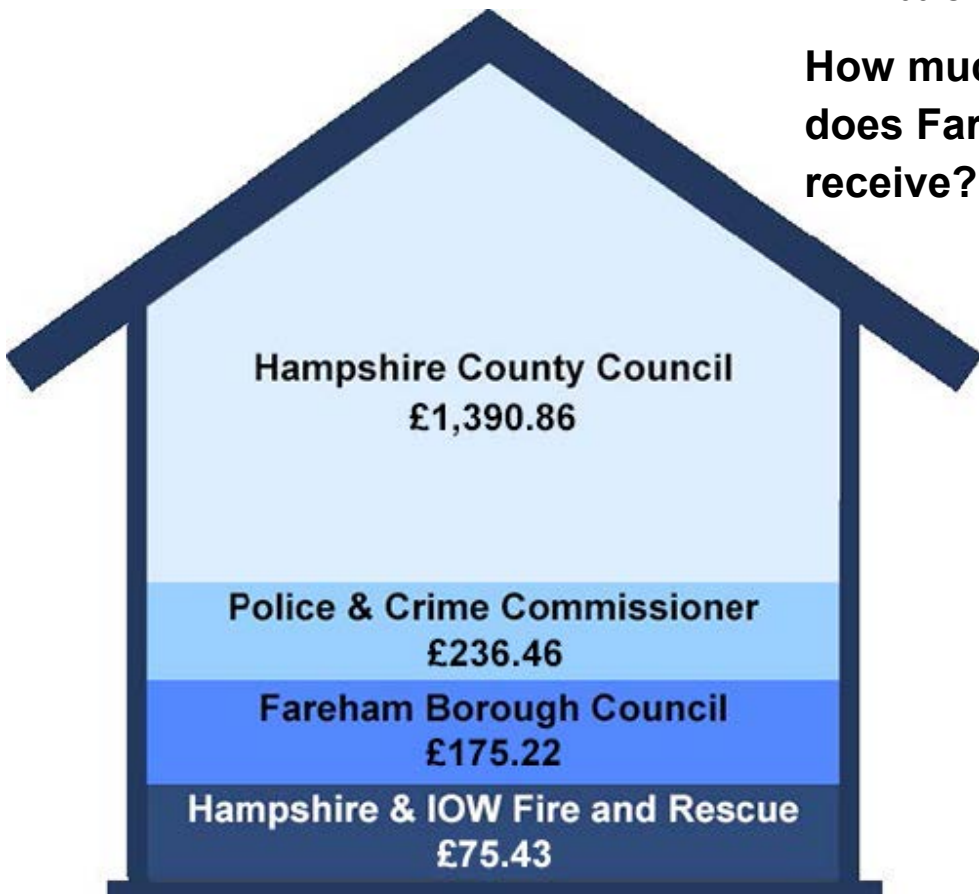
Despite this increase we have one of the lowest Council Taxes in the country; this is achieved by running our services more efficiently and by careful financial management.

How much of my Council Tax goes to Fareham Borough Council?

Only 10% of the Council Tax you pay goes towards services provided by Fareham Borough Council. Fareham's B and D charge of £175.22 continues to be the fifth lowest Council Tax for a district council in England out of more than 200 Councils.

How much of my Council Tax does Fareham Borough Council receive?

Council Tax for a Band D property (the mid Band) in 2022/23 will be £1,877.97



How do we calculate the Council Tax in Fareham?

We produce a Finance Strategy each year. This helps us make spending, borrowing and investment decisions over the next 5 years.

The Council has £8.1 million revenue reserves (money saved to invest in the future), funds balances of £14.3 million and capital reserves of £13.2 million. These are used to pay for new projects and services, meet any unforeseen costs and to smooth the effect of other financial pressures and changes in Government funding on Council Tax.

However, the Council's funds remain even tighter this year and are likely to be so for the foreseeable future because of economic pressures as a result of the pandemic and Government funding cuts.



The table below shows the changes to the Council's budget for 2022/23 and how we calculate your Council Tax.

COUNCIL TAX SUMMARY 2022/23			Amount per Band	
2021/22		2022/23	D Property	
£'000		£'000	£	
10,272	Net Expenditure	10,788	245.17	
	Less Income:			
-154	Lower Tier Services Grant	-220	-4.99	
-84	Use of Collection Fund Balances	39	0.89	
-2,578	Retained Business Rates	-2,898	-65.85	
7,456	Fareham Borough Council Total	7,710	175.22	
Add:	Hampshire County Council Precept		1,390.86	
	Hampshire Fire and Rescue Authority Precept		75.43	
	Police and Crime Commissioner Precept		236.46	
	TOTAL		£1,877.97	

Good at collecting Council Tax

Fareham Borough Council maintains excellent collection rates for Council Tax. We collected 98.4% of the Council Tax due in 2020/21, this compares excellently with other authorities both in Hampshire and nationally.

Making sure your Council Tax is well spent

Part of your Council Tax funds services provided by Fareham Borough Council such as waste collection and kerbside recycling, street cleaning, housing and community and leisure services.



The table below shows how we spend your money to provide services in Fareham.

REVENUE BUDGET SUMMARY 2022/23	Budget	Budget	Change between
	2021/22	2022/23	2021/22 and 2022/23
Service Budgets	£	£	£
Planning Committee	482,000	439,500	-42,500
Licensing & Regulatory Affairs Committee	552,700	574,400	21,700
Executive - Service Budgets			
- Leisure & Community	1,641,400	-17,500	-1,658,900
- Housing	1,856,500	2,083,000	226,500
- Planning & Development	1,659,500	1,636,600	-22,900
- Policy & Resources	-705,100	44,400	749,500
- Health & Public Protection	557,100	662,400	105,300
- Streetscene	5,399,300	4,897,400	-501,900
Accounting adjustments in Service Portfolios	3,249,300	3,147,200	-102,100
Total Service Expenditure	14,692,700	13,467,400	-1,225,300
Other Budgets	-4,420,800	-2,679,400	1,741,400
NET EXPENDITURE	10,271,900	10,788,000	516,100

What is my Council Tax spent on?

The chart below shows you how much of your £175.22 (Band D) is spent on the different services we provide to our residents.

How your £175.22 is spent	
EMPTYING YOUR BINS	22.93
AFFORDABLE HOUSING	20.46
GOOD QUALITY GREEN SPACES	19.59
REMOVING LITTER	17.23
MANAGING GROWTH	16.00
GIVING LOCAL PEOPLE A VOICE	8.99
SUPPORTING THOSE ON LOWER INCOMES	8.73
CONTROLLING PROPERTY DEVELOPMENT	8.66
MOWING THE GRASS	7.51
KEEPING YOU INFORMED	7.28
PROTECTING YOUR HEALTH	6.61
CONSERVATION	5.81
GRANTS	4.01
HELPING YOU FEEL SAFE AND SECURE	3.54
PUBLIC CONVENIENCES	3.37
LOCAL COMMUNITY FACILITIES	2.41
WELL MAINTAINED SPORTS PITCHES	2.15
ENTERTAINMENT AT FERNEHAM HALL	1.80
A RANGE OF LOCAL JOB OPPORTUNITIES	1.42
CREATING A VIBRANT TOWN CENTRE	1.27
PROTECTING THE COAST	1.11
PEST CONTROL	1.01
HELPING WITH TRAFFIC MANAGEMENT	0.87
PLANNING FOR EMERGENCIES	0.86
HOME IMPROVEMENTS	0.52
HELPING YOU TRAVEL AROUND THE BOROUGH	0.49
PLAY AREAS	0.33
LICENSING	0.17
HELPING WITH YOUR PROPERTY MOVES	0.09
POPULAR LEISURE CENTRES	0.00
HELPING WITH BEREAVEMENT ARRANGEMENTS	0.00
PLACES TO PARK YOUR CAR	0.00
TOTAL TO BE MET BY FAREHAM COUNCIL TAX PAYERS	£175.22

Council Tax Support

If you have made a claim for Council Tax Support, your Council Tax bill and enclosed Decision Letter will tell how much support you are entitled to. Please contact us to find out more about the Council Tax Support scheme and how to apply.

Contact us

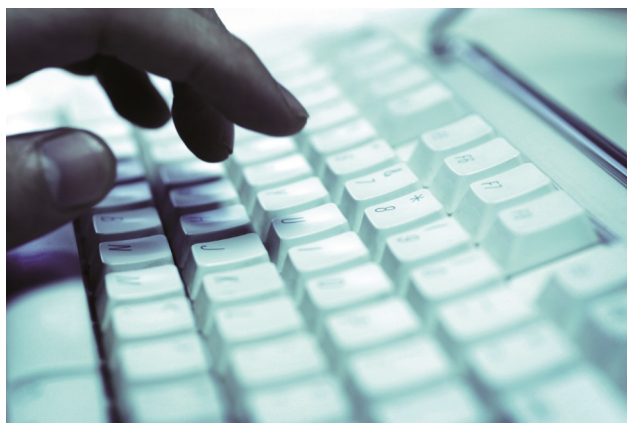
For more information regarding Council Tax please see the back of your Council Tax Bill or visit our website. Alternatively you can contact us at the Civic Offices and we will be happy to help you.

Tel: (01329) 824651

Email: counciltax@fareham.gov.uk

Web: www.fareham.gov.uk

Civic Offices, Civic Way, Fareham, PO16 7AZ



How is the rest of my Council Tax spent?

Further details on the spending plans of Hampshire County Council, Hampshire Police and Crime Commissioner and Hampshire and Isle of Wight Fire and Rescue Authority can be found at the following websites:

Hampshire County Council

For adult social care authorities, Council Tax bills show two percentage changes: one for the part of the overall change attributable to the adult social care precept and one for the part attributable to general expenditure.

<https://www.hants.gov.uk/counciltax>

Hampshire Police and Crime Commissioner

<https://www.hampshire-pcc.gov.uk/transparency/money/council-tax>

Hampshire and Isle of Wight Fire and Rescue Authority

www.hantsfire.gov.uk/about/council-tax/