

Council Tax Guide 2024/25

Welcome to your Council Tax guide

This brief guide will explain how your Council Tax helps to pay for the services Fareham Borough Council provides across the Borough.

Fareham's Council Tax increase

Following a consultation with residents living in the Fareham Borough, it has become clear that an increase in Council Tax is necessary to ensure that residents continue to receive the same high level of service they have come to expect.

The financial year 2024/25 will see a further one-off settlement from central government even though we have been asking for clarity over our funding and for the opportunity to make our own decisions over setting Council Tax, rather than rely on a percentage increase that is determined centrally.

Last year we were advised that the Fair Funding Review has been deferred until at least the start of the 2025/26 financial year. It will be far-reaching and include areas that fall under Hampshire County Council's remit such as social care and education.

Any changes to funding emerging as a result of the Review will be made for the 2026/27 financial year. As well as potential funding reductions we must also plan for other budget pressures that will see spending increase over the next few years.

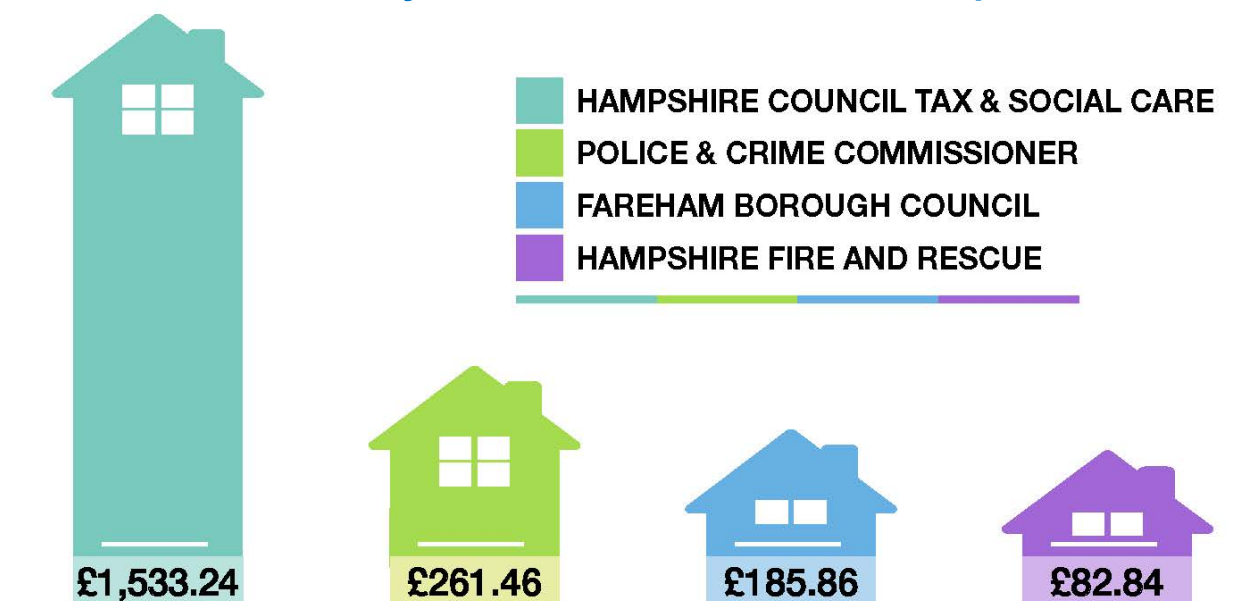
This all comes on top of the current cost of living crisis that has not only seen many households struggle but has also seen this council experience cost increases due to high inflation.

How much of my Council Tax goes to Fareham Borough Council?

Just over 9% of the Council Tax you pay goes towards the services provided by Fareham Borough Council. Fareham's 2024/25 Band D charge of £185.86 (£180.46 in 2023/24) is an increase of £5.40 or 2.99%.

In 2023/24, Fareham had the 2nd lowest Council Tax in Hampshire and the 5th lowest Council Tax across all District Councils in England. This is achieved by running our services more efficiently and by careful financial management.

How your total Council Tax is made up:



Council Tax for a Band D property (the mid Band) in 2024/25 will be £2,063.40

How do we calculate the Council Tax in Fareham?

We produce a Finance Strategy each year. This helps us make spending, borrowing and investment decisions over the next 5 years.

The Council has £6.8 million revenue reserves (money saved to invest in the future), funds balances of £11.1 million and capital reserves of £25.6 million.

These are used to pay for new projects and services, meet any unforeseen costs and to smooth the effect of other financial pressures and changes in Government funding on Council Tax.

However, the Council's funds remain even tighter this year and are likely to be so for the foreseeable future because of economic pressures, the cost-of-living crisis and a lack of clarity over Government funding.



The table below shows the changes to the Council's budget for 2024/25.

COUNCIL TAX SUMMARY 2024/25		Amount per Band	
2023/24		2024/25	D Property
£'000		£'000	£
10,272	Net Expenditure	13,293	300.82
	Less Income:		
-340	Lower Tier Services Grant	-607	-13.74
-84	Use of Collection Fund Balances	-0	0.00
-2,578	Retained Business Rates	-4,473	-101.22
7,270	Fareham Borough Council Total	8,213	185.86
Add:	Hampshire County Council Precept		1,533.24
	Hampshire Fire and Rescue Authority Precept		82.84
	Police and Crime Commissioner Precept		261.46
	TOTAL		£2,063.40

Good at collecting Council Tax

Fareham Borough Council maintains excellent collection rates for Council Tax. We collected 98.3% of the Council Tax due in 2022/23. This compares excellently with other authorities both in Hampshire and nationally.

Making sure your Council Tax is well spent

Part of your Council Tax funds services provided by Fareham Borough Council such as waste collection and kerbside recycling, street cleaning, housing and community and leisure services.



The table below shows how we spend your money to provide services in Fareham.

REVENUE BUDGET SUMMARY 2024/25	Budget	Budget	Change between
	2023/24	2024/25	2023/24 and 2023/24
Service Budgets	£	£	£
Planning Committee	694,300	578,100	-116,200
Licensing & Regulatory Affairs Committee	540,400	699,100	158,700
Executive - Service Budgets			
- Leisure & Community	-38,600	148,600	187,200
- Housing	2,270,800	3,435,900	1,165,100
- Planning & Development	1,246,100	1,221,200	-24,900
- Policy & Resources	541,800	-958,900	-1,500,700
- Health & Public Protection	765,800	373,500	-392,300
- Streetscene	5,592,200	6,706,800	1,114,600
Accounting Adjustments in Service Portfolios	4,101,900	3,891,400	-210,500
Total Service Expenditure	15,714,700	16,095,700	381,000
Other Budgets	-3,817,600	-2,803,100	1,014,500
NET EXPENDITURE	11,897,100	13,292,600	1,395,500

What is my Council Tax spent on?

The chart below shows you how much of your £185.86 (Band D) is spent on the different services we provide to our residents.

How your £185.86 is spent	
AFFORDABLE HOUSING	33.07
EMPTYING YOUR BINS	30.42
GOOD QUALITY GREEN SPACES	21.16
MANAGING GROWTH	16.21
REMOVING LITTER	10.98
CONTROLLING PROPERTY DEVELOPMENT	8.49
KEEPING YOU INFORMED	7.77
GIVING LOCAL PEOPLE A VOICE	7.61
ENTERTAINMENT AT FAREHAM LIVE	7.20
CONSERVATION	6.68
MOWING THE GRASS	5.90
SUPPORTING THOSE ON LOWER INCOMES	5.74
PROTECTING YOUR HEALTH	5.52
PUBLIC CONVENIENCES	3.34
CREATING A VIBRANT TOWN CENTRE	2.91
GRANTS	2.30
HELPING YOU FEEL SAFE AND SECURE	2.30
WELL MAINTAINED SPORTS PITCHES	1.68
LOCAL COMMUNITY FACILITIES	1.56
PROTECTING THE COAST	1.07
A RANGE OF LOCAL JOB OPPORTUNITIES	0.93
HELPING WITH TRAFFIC MANAGEMENT	0.85
PEST CONTROL	0.76
PLANNING FOR EMERGENCIES	0.69
HELPING YOU TRAVEL AROUND THE BOROUGH	0.38
PLAY AREAS	0.26
LICENSING	0.05
HOME IMPROVEMENTS	0.03
POPULAR LEISURE CENTRES	0.00
HELPING WITH BEREAVEMENT ARRANGEMENTS	0.00
PLACES TO PARK YOUR CAR	0.00
HELPING WITH YOUR PROPERTY MOVES	0.00
TOTAL TO BE MET BY FAREHAM COUNCIL TAX PAYERS	185.86

Council Tax Support

If you have made a claim for Council Tax Support, your Council Tax bill and enclosed Decision Letter will tell how much support you are entitled to. Please contact us to find out more about the Council Tax Support scheme and how to apply.

Contact us

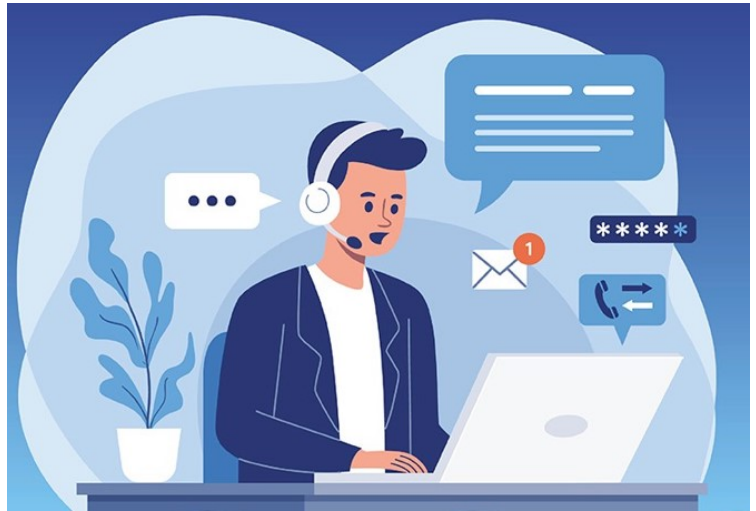
For more information regarding Council Tax please see the back of your Council Tax Bill or visit our website. Alternatively you can contact us at the Civic Offices and we will be happy to help you.

Tel: (01329) 824651

Email: counciltax@fareham.gov.uk

Web: www.fareham.gov.uk

Address: Civic Offices, Civic Way, Fareham,
PO16 7AZ



How is the rest of my Council Tax spent?

Further details on the spending plans of Hampshire County Council, Hampshire Police and Crime Commissioner and Hampshire and Isle of Wight Fire and Rescue Authority can be found at the following websites:

Hampshire County Council

For adult social care authorities, Council Tax bills show two percentage changes: one for the part of the overall change attributable to the adult social care precept and one for the part attributable to general expenditure.

www.hants.gov.uk/counciltax

www.hants.gov.uk/aboutthecouncil/budgetspendingandperformance

Hampshire Police and Crime Commissioner

www.hampshire-pcc.gov.uk/transparency/money/council-tax

Hampshire and Isle of Wight Fire and Rescue Authority

www.hantsfire.gov.uk/about/council-tax