

Community Action Team Meeting



Chairman
Cllr Arthur Mandry



FAREHAM
BOROUGH COUNCIL

IFA2 Planning Application Introduction

Councillor Seán Woodward
Executive Leader
Fareham Borough Council



Matters to cover...

- What is IFA2 & how does it work?
- Consultation undertaken by National Grid (NG)
- The planning application
- Environmental Impact Assessment – key topics
- Public Consultation
- What happens next

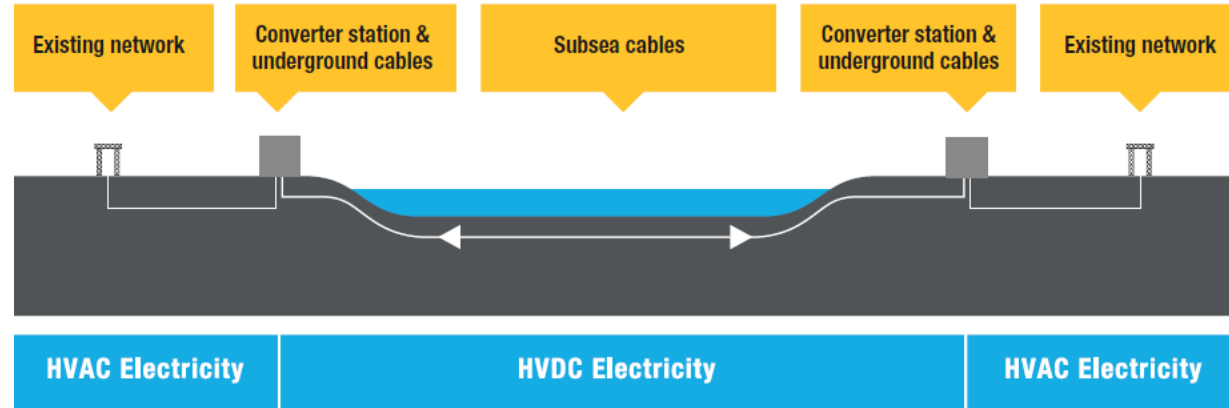
What is IFA2?

- IFA2 (Interconnexion France-Angleterre 2)
- Electricity interconnector
- Connect electricity transmission systems of UK and France
- Share power



How does IFA2 work?

- Over 100 miles of undersea cables
- Converter station at each end
- Changes direct current (DC) to alternating current (AC)
- Substation then connects to National Grid



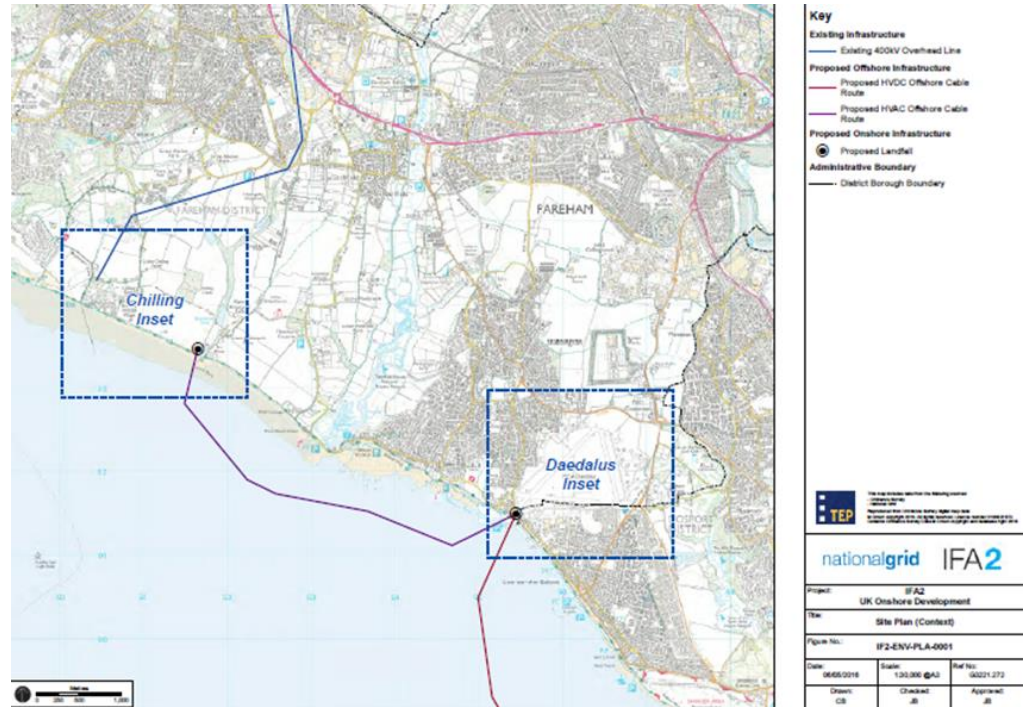
Pre-application Consultation

- NG held two consultation events - one in December 2015 and one in March this year
- Approximately 450 people attended the December events
- Approximately 680 people attended the March events
- 22,000 invitations were sent out for each event

The Planning Application

Split across two sites:

- Daedalus
- Chilling
- On-shore elements only



FAREHAM
BOROUGH COUNCIL

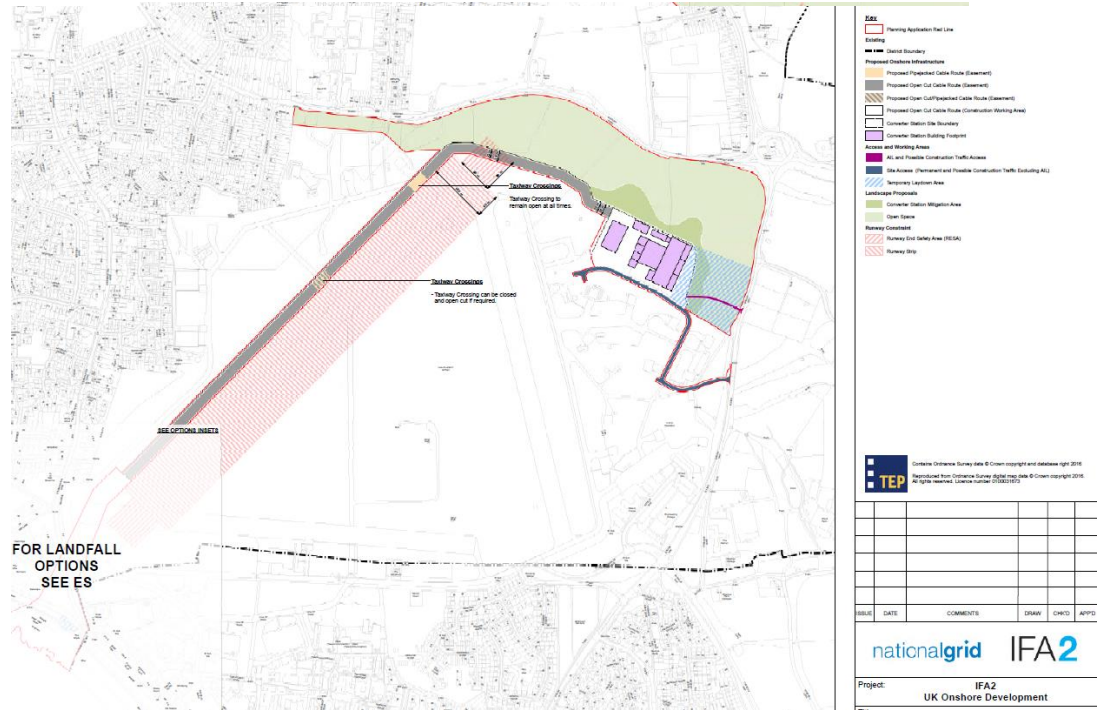
The Planning Application

- Outline planning permission is sought at Daedalus for:
- Converter station buildings (to a maximum height of 22 metres)
- Creation of public open space



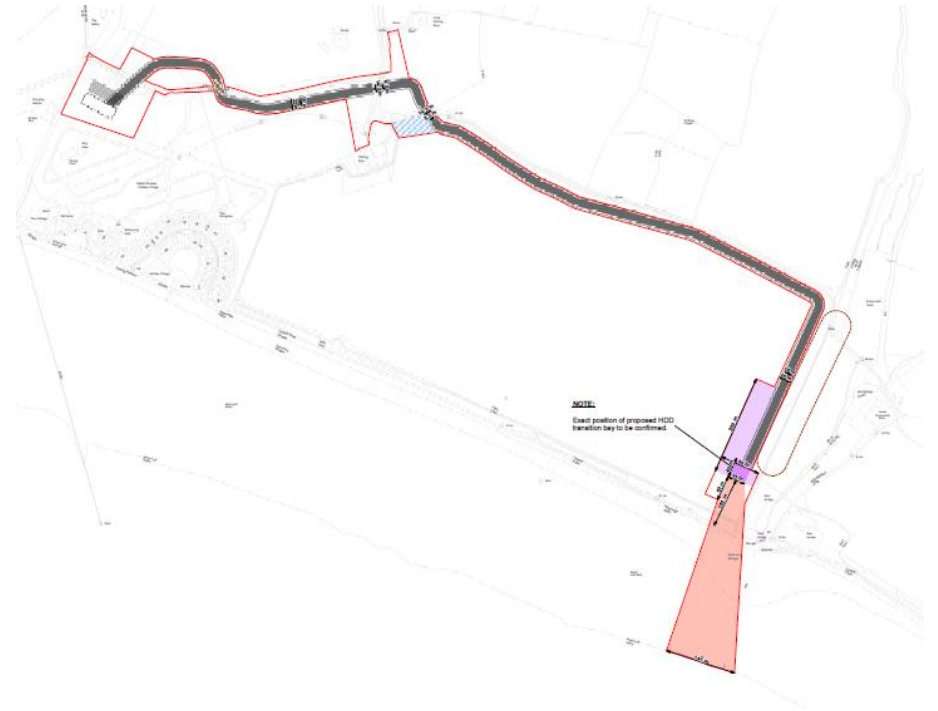
The Planning Application

- Full Planning permission is sought at Hill Head and Stubbington for:
- The installation of cables between Mean Low Water Springs and the converter station



The Planning Application

- Full Planning Permission is sought at Chilling for:
- The Installation of cables between the Mean Low Water Springs and the existing cable sealing end compound at Chilling Lane



Environmental Impact

- EIA – Environmental Impact Assessment
- Assesses significant Environmental Impacts
- Environmental Statement to support the application



Environmental Impact

- Many topics also raised as issues in NG consultation feedback
- Environmental Statement – 20 Chapters
- Technical appendices and figures
- Non-Technical Summary



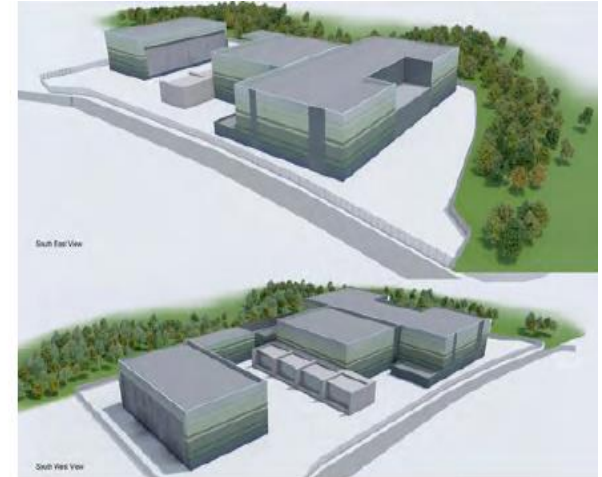
Environmental Impact

- Some key issues include:
- Visual appearance of the Converter Station
- Location of the Converter Station
- Noise and Electric & Magnetic Fields
- Impact on aircraft / airfield operations



Converter Station

- Up to 22m high
- Family of buildings
- Building design
- Landscape mitigation
- The outline planning permission



View from Brune Lane



Existing View

A - Existing view

Existing view looking west from the B3385 Broom Way at the junction with Brune Lane



Proposed on completion

B - Proposals on completion (at 0 years)

Existing view looking west from the B3385 Broom Way at the junction with Brune Lane

View from Brune Lane



Proposal on completion with planting – year 0

C - Proposals on completion (at 0 years) with additional mitigation (mounding and planting)
Existing view looking west from the B3385 Broom Way at the junction with Brune Lane



Proposal on completion with planting – year 15

D - Proposals with additional mitigation (mounding and planting) at year 15
Existing view looking west from the B3385 Broom Way at the junction with Brune Lane

View from Gosport Rd



Existing View

A - Existing view

Existing view looking south from the Peel Common Roundabout



Proposed on completion

B - Proposals on completion (at 0 years)

Existing view looking south from the Peel Common Roundabout

View from Gosport Rd



Proposal on completion with planting – year 0

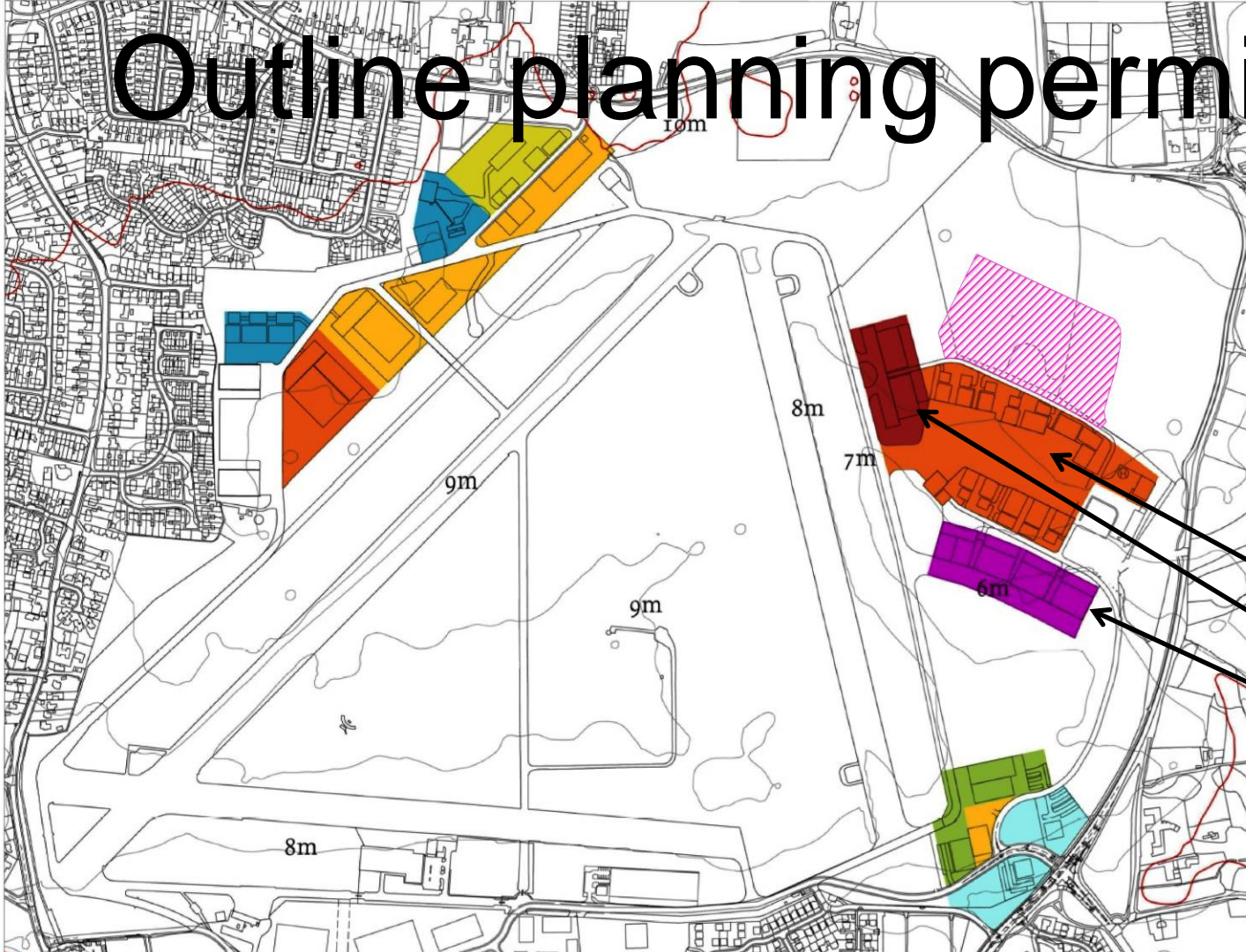
C - Proposals on completion (at 0 years) with additional mitigation (mounding and planting)
Existing view looking south from the Peel Common Roundabout



Proposal on completion with planting – year 15

D - Proposals with additional mitigation (mounding and planting) at year 15
Existing view looking south from the Peel Common Roundabout

Outline planning permission

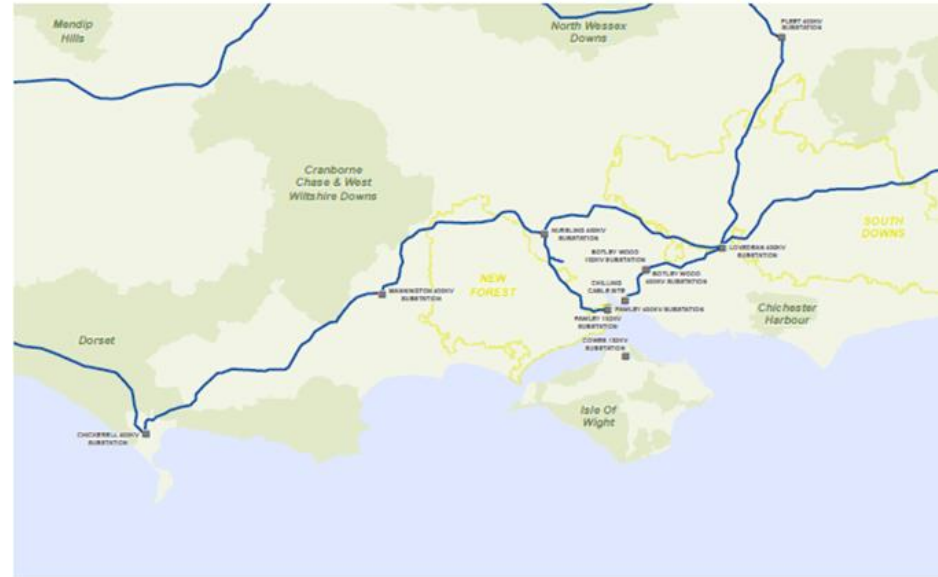


All heights are above ground levels as indicated
All heights are maximum to eaves level.



Converter Station Location

- Converter Station location driven by:
 - Connection point to the Grid
 - Different connection points assessed:
 - Dorset to East Sussex
 - Chilling chosen as connection point



Existing National Grid Network and substation sites.

Converter Station Location

- Available site search started 2011
- East and west shores of the Solent
- Need commercially available land
- NG considered Daedalus Waterfront first
- Too small for NG operational needs



Converter Station Location

- NG Preferred Site was Chilling:
 - HCC not willing to sell its land
 - NG could have used Compulsory Purchase Order in absence of other options
 - NG rather work with landowners rather than CPO in light of risks, uncertainties and delays
- Fareham concerned at visual impact at Chilling



Converter Station Location

Fawley Power Station:

- Not owned by NG
- Did look there – but site not available
- Site sold for housing/marina development

Existing Cable tunnel from Fawley:

- No capacity for additional cables – no space
- New tunnel would be expensive; and
- Under major shipping channel



Noise

- No noise from underground cables
- Main plant will be enclosed
- External equipment sited and insulated to minimise noise.
- Intended that converter noise will not exceed existing background levels at noise sensitive receptors



Electromagnetic fields (EMF)

- Government advised by Public Health England
- National policies on EMF exposure relating to high voltage infrastructure
- Applicant advises that level of exposure to EMFs will be fully in compliance with national policies and guidance



Airfield Impact

- No adverse effect on aircraft electronic systems
- No adverse effect on Maritime and Coastguard Agency
- Wired communication/ fibre optic cables not affected
- No appreciable effect on mobile telephones
- No appreciable effect on television reception



Airfield Impact

- Some effect possible on aircraft radios (operate on VHF at Daedalus) when taxiing close to the convertor building
- Underground cables likely to have some impact on aircraft compasses when taxiing close to them



Public Consultation

- Fareham will consult a number of statutory bodies and others on matters including:
- Noise
- EMFs
- Effect on the operation of the airfield



Public Consultation

- Just over 4,800 letters sent
- Press notice
- Social Media
- Site notices at both locations



Public Consultation

- Comments up to 30 June 2016
- Online:
 - www.fareham.gov.uk/planning
 - P/16/0557/OA
- Email or write:
 - mwyatt@fareham.gov.uk
 - Fareham Borough Council
Civic Offices,
Civic Way,
Fareham,
PO16 7AZ

FAREHAM
BOROUGH COUNCIL

Contact Us Accessibility Mobile Site MyAccount

A B C D E F G H I J K L M N O P Q R S T U V W X Y Z

Google Custom Search



Home

What's On

Latest News

Report it

Apply for it

Pay for it

You are here: Home



Mayor's Tea Party

Were you or someone you know born in 1926? Join the Mayor at a special tea party in honour of HM The Queen's 90th birthday. [More...](#)

Notice served on travellers

We are aware that there are currently travellers who are illegally camped at Stubbington Recreation Ground and apologise for any inconvenience this may cause our residents. [More...](#)

IFA2 Planning Application

There will be a CAT Meeting about the IFA2 Planning Application at Holy Rood Church, Stubbington on Monday 23 May at 6pm. [More...](#)

Benefits



Bereavement



Business



Have your say



Clean & Tidy



Council Tax



Grants



About the Council



FAREHAM
BOROUGH COUNCIL

What next?

- Public chance to comment
- Planning application likely to be decided by the Planning Committee in September 2016



Questions?