

# Help us to Conserve the Character of Portchester (Castle Street) Conservation Area

## Public Consultation

### What is the Consultation About ?

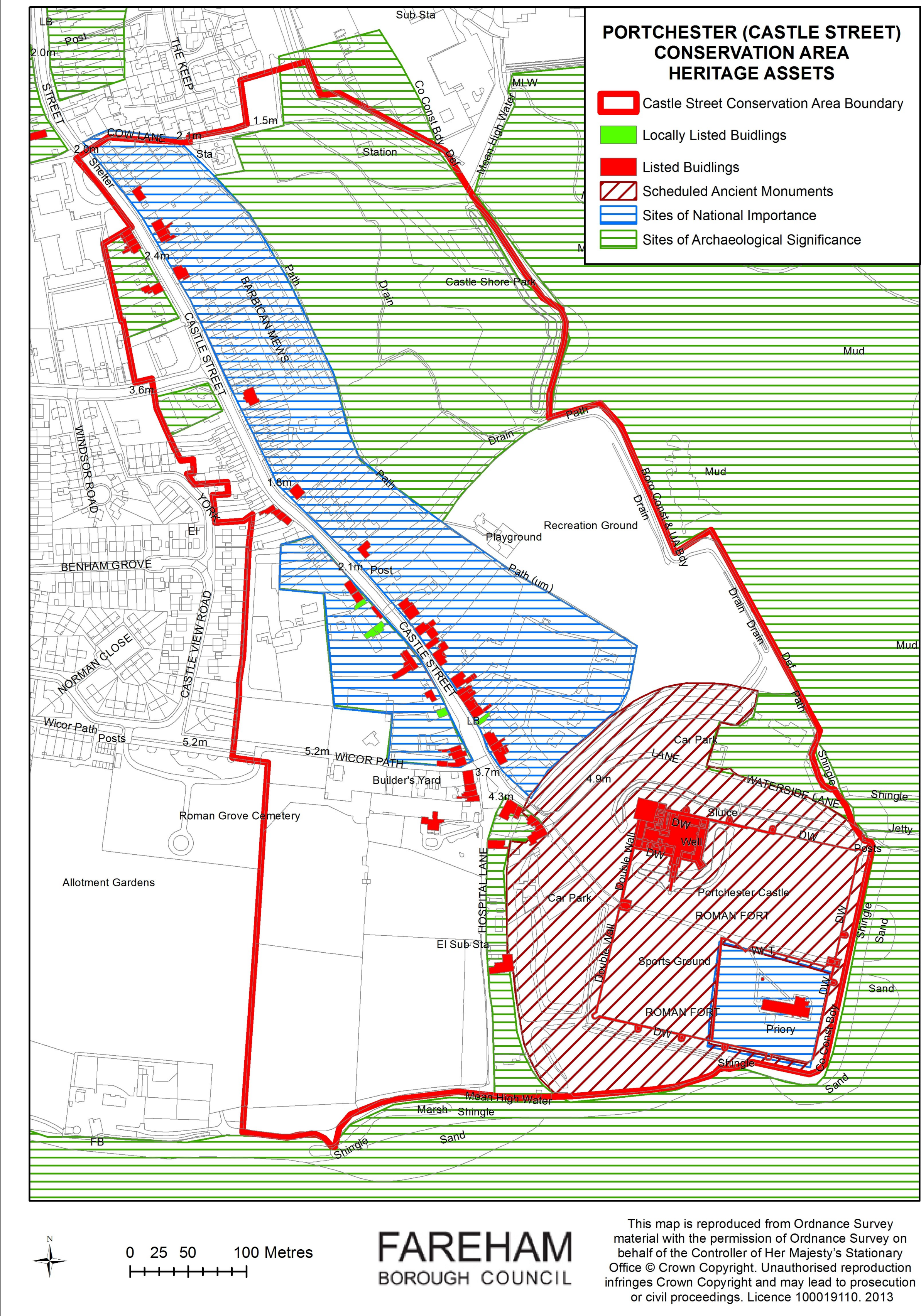
Fareham Borough Council would like you to comment on the draft updated Conservation Area Character Appraisal and Management Strategy for Portchester (Castle Street) Conservation Area.

### What is a Conservation Area ?

A conservation area is an area of special architectural or historic interest that the Council has designated in order to conserve its character and appearance for the benefit of present and future generations.

### Portchester (Castle Street) Conservation Area

The conservation area was designated in 1969 to protect the character and appearance of the village of Portchester, including Portchester Castle. The boundary was extended in 1975 to include an area north of White Hart Lane. Portchester is built on the flat coastal plain at the head of Portsmouth Harbour. The castle, which dates from the 3rd century AD, is located next to the shore at the southern end of Castle Street. The historic buildings, scheduled ancient monument, important areas for archaeology and important views are shown on the two maps below.

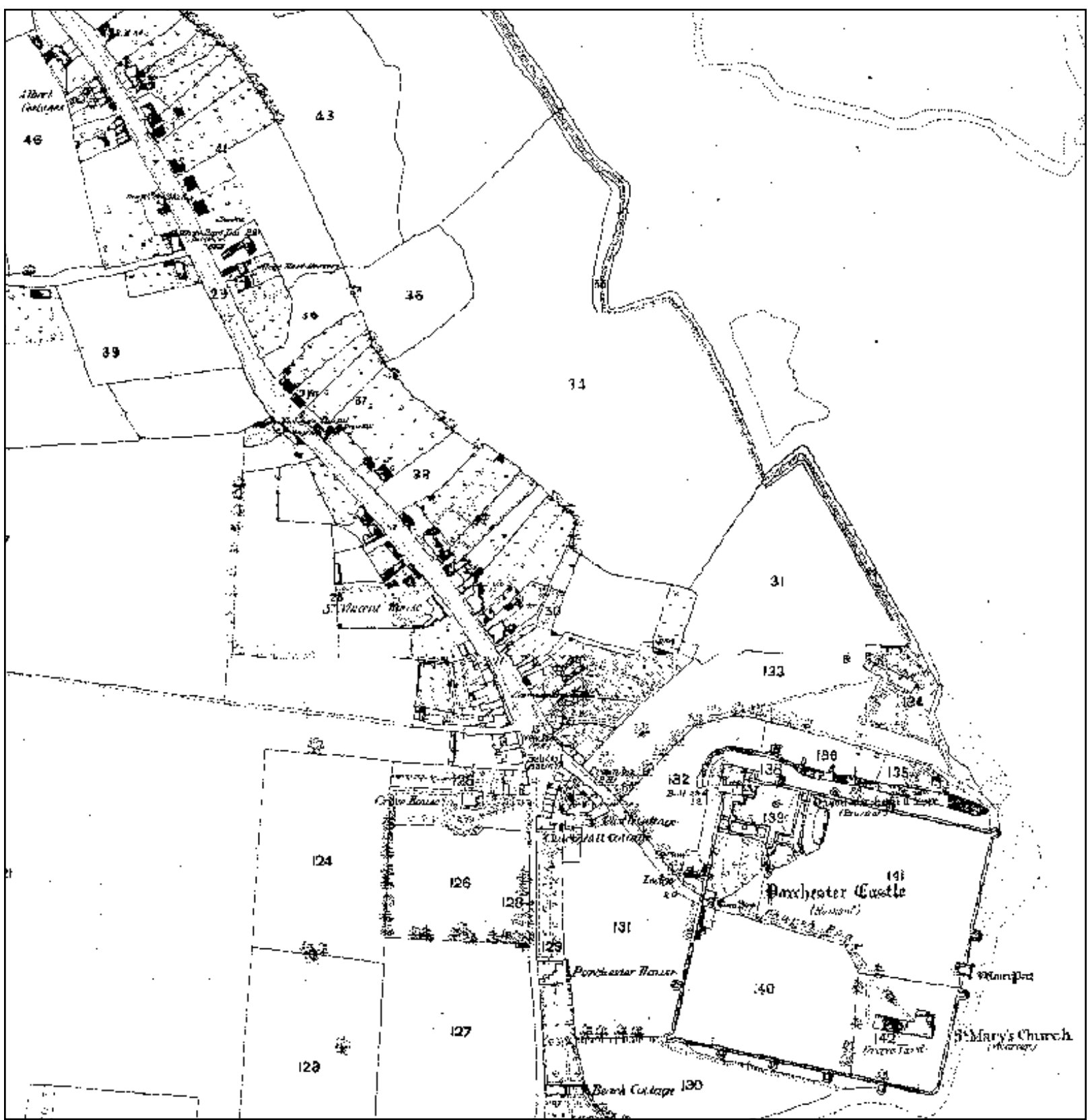




Character Appraisal

The conservation area character appraisal identifies the features of the conservation area that we think contribute to its architectural and historic interest. The **key features** identified are:

- The special architectural and historic interest and setting of Portchester Castle and St Mary's Church.
- The many important views of Portchester Castle from throughout the conservation area.
- The important long distance views of the castle in its wider setting in the historic context of Portsmouth Harbour, including those from Portsdown Hill.
- The archaeological interest of the settlement.
- The open land, gardens and allotments which provide a setting for the castle and the historic settlement.
- The surviving historic street pattern of Castle Street.
- The architectural and historic interest and setting of the listed buildings within the conservation area.
- The variety of architectural features, details and materials that contribute to the character of the conservation area.
- The many boundary walls and railings of historic interest that contribute to character.
- The many trees, groups of trees and widespread planting that contribute to the established character of the street frontages, gardens and the setting of the settlement.
- The loose surfaces and absence of formal pavements and kerbs on roads and footpaths where it contributes to character.
- The historic lamp columns.
- Traditional building materials and techniques that are important in maintaining the character and appearance of the conservation area.



Ordnance Survey  
1868

Areas of Differing Character

For appraisal Portchester (Castle Street) Conservation Area has been divided into 4 areas of differing character, these are shown on the map opposite and in the photos below.



Castle Street and its rear garden land



The open land surrounding the settlement



The immediate setting of the castle



Inside the castle walls





Managing the Conservation Area

The management strategy explains how we plan to conserve the character and appearance of the conservation area including:

- using the local planning process to manage development.
- identifying opportunities for enhancement, including improvements to specific sites (see map below and photos).
- monitoring change in the conservation area.

Article 4 Direction

The document recommends that an article 4 direction should be used to remove ‘permitted development rights’ which allow a variety of minor alterations and extensions to be carried out without the need to make a planning application. This can be harmful to the character of the conservation area. An article 4 direction requires a planning application to be made instead allowing proper consideration through the planning process.

How Can I Comment ?

We are especially interested in your comments concerning:

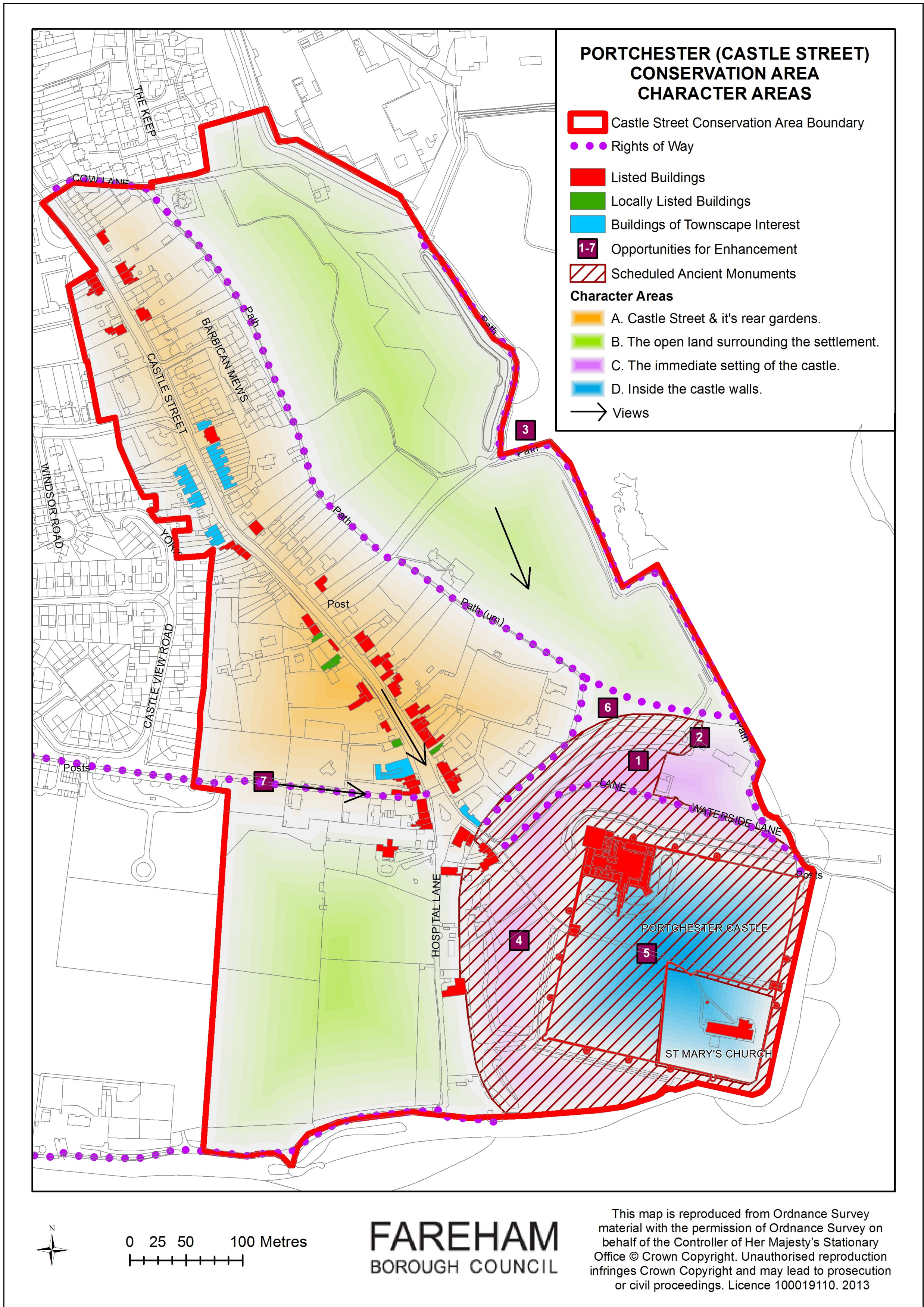
- The key features identified in the document that should be preserved and enhanced;
- The opportunities identified in the management strategy for enhancing character and appearance,
- The proposed use of an article 4 direction to control potentially harmful alterations to buildings by removing permitted development rights and requiring a planning application.

Send a completed comment sheet to the Conservation Officer, Fareham Borough Council, Civic Offices, Civic Way, Fareham, PO16 7AZ. Alternatively you can fill in an online comments form at [www.fareham.gov.uk/consultations](http://www.fareham.gov.uk/consultations).

The closing date for comments is;

Find Out More?

Please take a copy of the draft document and a comment sheet from this display or download one from the council’s website at [www.fareham.gov.uk/consultations](http://www.fareham.gov.uk/consultations).



Waterside Lane Car Park—Visual Improvements



Gunpowder Store - Planting Clearance



Sea Wall - Visual Improvement



Car Park adjacent to the land gate - Additional Planting



Church Road - Surfacing



Overhead Cables



Wicor Path– Western End



Signage Review





FAREHAM  
BOROUGH COUNCIL