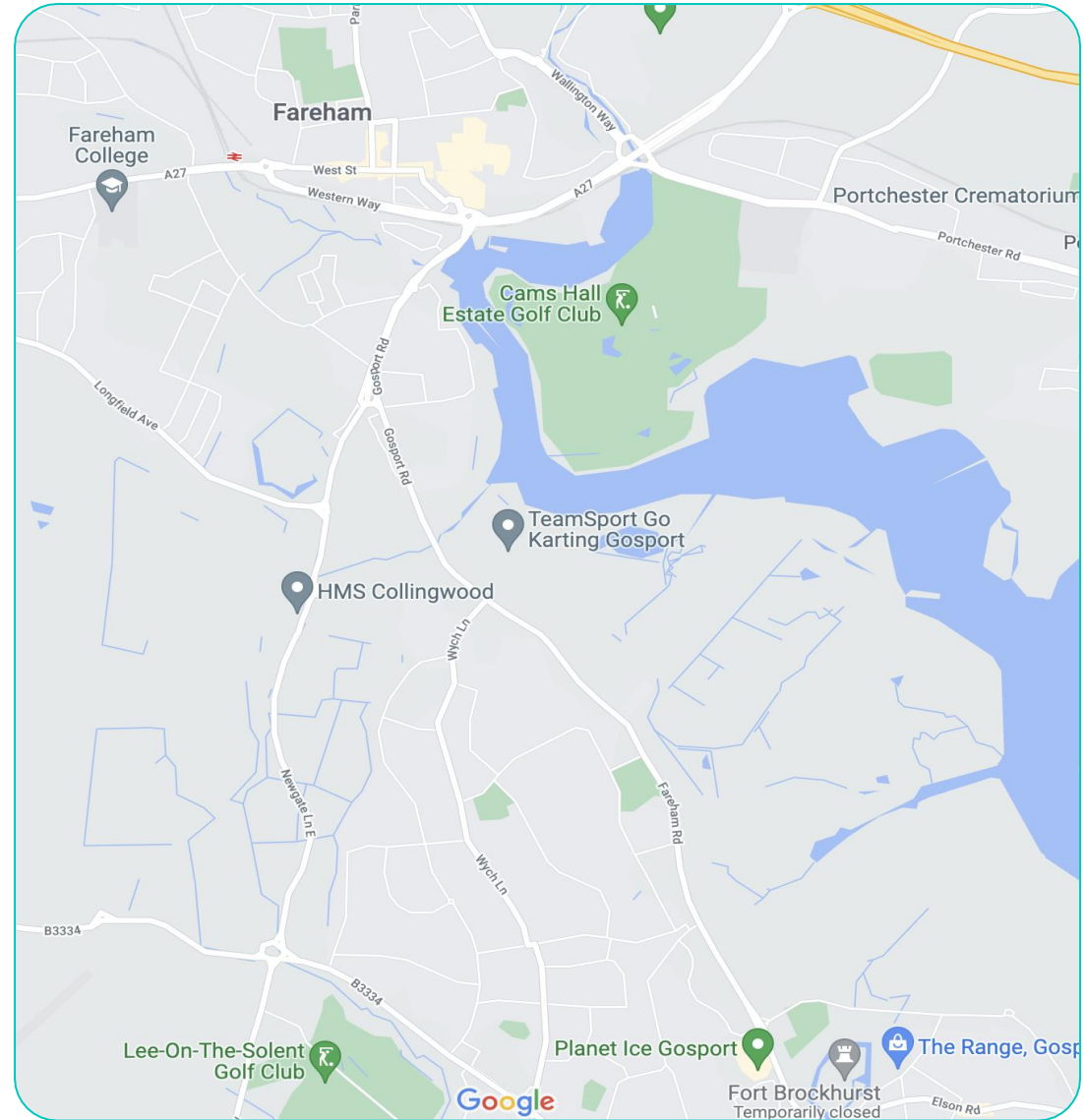


Presentation to Inspector: Helen Hockenhull BA(Hons) B.PI MRTPI

From Fareham, Gosport and Stubbington Residents in relation to Fareham Local Plan.

Reasons why Fareham Residents feel that the local plan is unsound. Little emphasis has been put on the traffic congestion that we already have. WE have enlisted the skills of a local pilot to prepare some images. The Daylight pictures you will see have been taken between 1600hrs and 1700hrs on Wednesday 3rd November 2021. The evening pictures have been taken between 1700hrs and 1800hrs on the same day. The FBC plan has allowed for 1250 houses to be built on land South of Longfield Avenue. This will not only impact on the Fareham residents but also the Gosport Residents who rely on the A32 (Gosport Rd / Fareham Rd, Newgate Lane to exit Gosport to travel eastwards towards Portsmouth. There are already 400 + houses that have been given planning permission off of Newgate Lane. This will just clog the exit for Gosport if travelling east along M27. Within this presentation you will also see comments that have been extracted from Facebook after the pictures were placed on several groups for Fareham and Gosport.



This picture shows Quay Street Roundabout. This is one of the pictures that was taken between 1600hrs and 1700hrs. As you can see by the green arrow that has been placed on the picture. This is the A32 which leads in and out of Gosport you can see the build up of traffic already both going in and out of the A32. The second red arrow points to the flyover that runs from East to West from Junction 9 of the M27. This flyover relieves some of the traffic but as you can see at the time of the picture being taken it shows how little this is used. Most of the traffic is using the A32 into Gosport.



This picture is at the same location as the previous picture but from a different angle. This shows the traffic better coming from the M27 Junction 9. You can see 4 vehicles at this time marked with the green arrow. Which goes to show the build up of traffic which will be even worse should the 1250 houses at Longfield Avenue be given the green light.



Comment from Posts on various social media platforms as follows.

"Well said and amazing photos."

"Sorry mate, people need houses near to commutable industry. Where do you propose they're built?"

"Great photos during rush hour (let's face it, it lasts longer than an hour too!) traffic."

"Not against houses just where they want to put them and the amount. 6000 houses with new off slip on slip already granted planning permission with railway. Just on outskirts of Fareham. Why the need for more in between existing houses on green fields. This is the most densely populated area where they want to build them and why you ask yourself, because it's about money and lining peoples pockets. Your right we do need houses affordable as well. Will these houses be affordable to someone on minimum wage. I doubt it as the land owner wants loads of money for his land. Maybe, the government should start compulsory purchases on land and build at cost. That would be amazing for people who cannot afford to buy."



Continued:

“that's not how this government operates unfortunately. A succession of buy to let schemes has pushed up rents (yeild) and hence house prices. The government will just change the definition of affordable housing to suit the developers.”

“Also, builders want to earn a living, they and their businesses the same as any other business would like to maximise their profits.”

“Nobody on minimum wage will be buying anything anywhere in the South East.”



Continued:

“whether there is or not, it’s here to stay because of one shop and it’s only going to get worse, and that one roundabout has a massive ripple effect when it is rush hour, especially now the slip road on Junction 11 is down to one lane, is an absolute nightmare.”

“Cannot agree more, the traffic assessment in the housing development plan was totally absent. Moreover, whoever says that the new bypass will lower traffic level they really do not consider the effect in Fareham town centre and close surrounding area.”

“it is getting too busy as it is so there is no way the number of developments can go ahead.

“Sadly they don’t seem to care about that”



Continued:



"I cannot see them caring about public revenue that much so it must be bribes or blackmail that gets this stuff passed!"

"Since I moved to Gosport in 84 the traffic was already heavy from the M27 through Fareham at rush hour, coming from SW London I was used to it. In 35 years it has got heavier, by luck the last 22 working years was local into Fleetlands or to Lee."

"Market roundabout made some improvements but not from the town side as the pictures show. For the younger generation looking for employment it's either on the peninsula or move out. 30+ minute commute just to get in/out of the Fareham bottle neck is a stressful end of any journey. The weekend traffic on Rowner Road/ Newgate Lane is as bad as weekday rush hour."

"I grew up in Gosport but moved out in 1990, traffic was bad enough back then. It's been the main factor why I haven't moved back."

"I work in Portsmouth so join the M27 at Jct 9 which is another bad area for queues. Would like to see footage of Segensworth and Park Gate as another 2000 dwellings are planned there too"

"It all takes on a whole new perspective when seen from above doesn't it."

"Doesn't look bad tbh, that's 5mins traffic at most. And again looking at it the wrong way. The more you 'develop' the road the more lazy people become and just drive everywhere. Make it difficult to drive, then more might actually use public transport or walk/cycle places."

"take 15 minutes for me to get to work by car. Hour and fifteen minutes by bus. I cannot walk there and too old to cycle up Titchfield hill!"

"Yep, don't doubt it, for every situation there will be someone who is just lazy and could get off the road."

"Lol the issue is developers getting rich at the expense of resident's quality of life it's not cycling related dear me."

"More local employment is needed so people don't have to drive out the area for work."

"We have large industrial estates spread around the area but invariably staff don't live nearby. I would love it if my employer was close by, but I have to travel too."

"And don't forget the 6000 houses at welborne..... 24000 people? Minimum 12000 cars?"

"Plus industrial units and 4 schools....."

"All piling onto the wonderful A32 to Wickham and beyond.... Of and Henry Cort Academy"



"I agree with you and like you have been trying to fight it. Wish the option had never happened. Should be kept as farmland."

"But no GP or dental surgeries."

"I didn't like to add that into the mix"

"Wrist slicing already!!!"

"And if the silver surfer accommodation is in line price wise with Skylark..... Heaven help us.... Extortionate."

"For councils it's all about the back***** they get for passing these plans etc."

"I'm afraid this area is slowly but surely being industrialised.... Just wait till the roads are finished and the ridiculous Airport starts taking passenger aircraft. Every blade of grass will be built on, so sad."

"Sad but true, Solent city, and us poor people who live here watching it all happen. It's developers and the politicians in their pockets to blame yet it carries on getting worse as no one will stand up to it who cannot be bought off."



"I worked for Virgin Atlantic at Gatwick.
It took me as long to get from j11 of M27 to St Michael's Grove, as it took me to get from Gatwick to J11 M27!!!!"

"It's ridiculous! I'm waiting to see how Segensworth fairs with alterations to Jct 9 especially when the Stubbington bypass opens and then there's all the houses planned for alongside that."

"I bet WW waits to go out/in the office until before/after rush hour."

"Don't forget the downsizing of the Stubbington roundabouts to force drivers to use W Way.

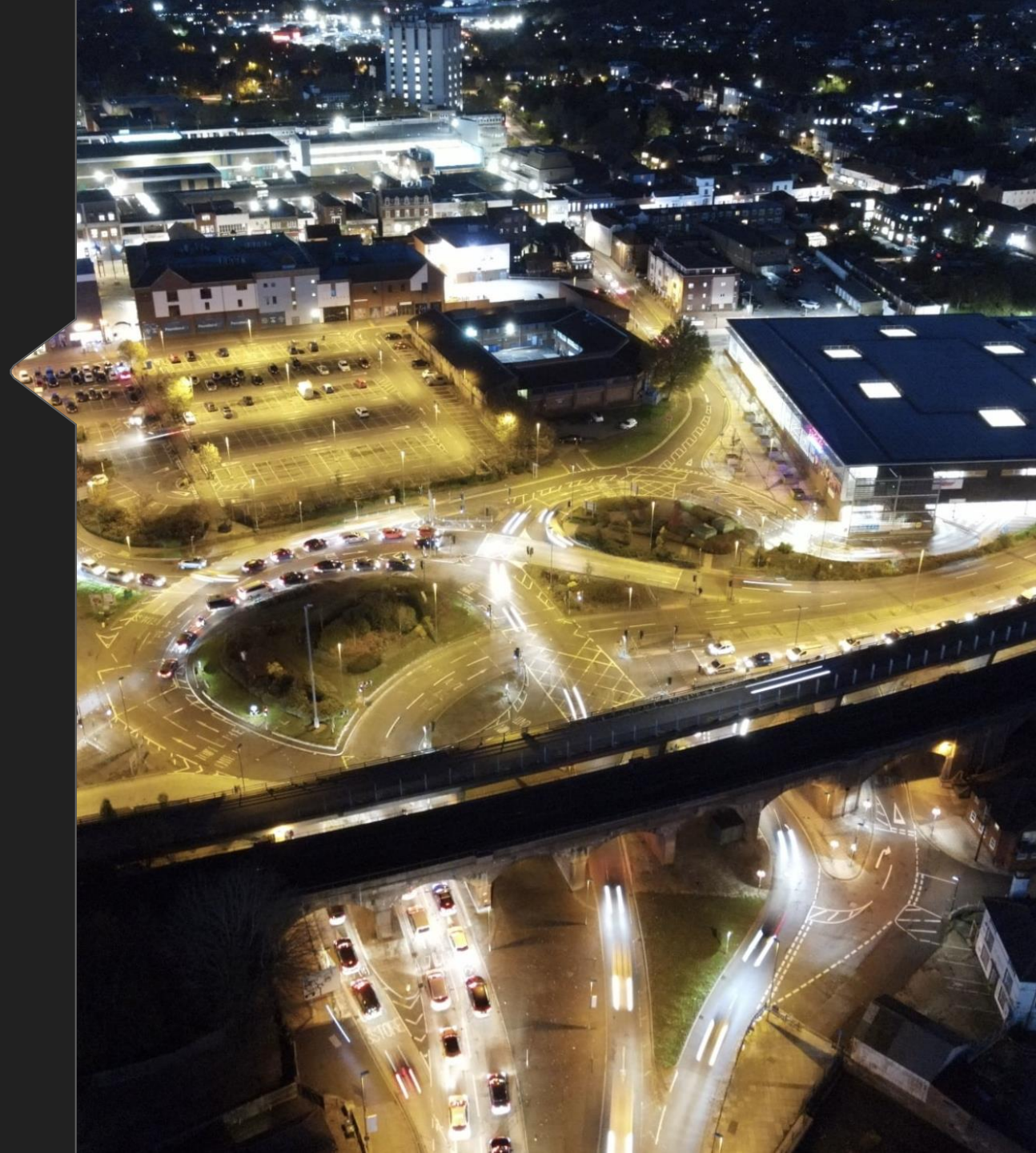
"The population of the South east must be content to sit in traffic or they wouldn't do it ,surely.

"Really, contentment? It's the fact they have no option.

"no option" No one forces them to commute by car or to live /work where ever that may be ,they choose to ,so appears to me ,they do have options !

"Do tell what those options are.

"plenty of options for them ,if living in Gosport ,why not work in Gosport ? Just a starter !"



“Try getting employment, how small minded is your comment?”

“That’s your opinion ,I did, used to travel all over for work ,got fed up with commuting so made the decision to work with in 30 minute walk from home and to live with putting what we needed first instead of what we wanted !”

“not everyone has that option and need to travel to get work.

“I am in a very good position in the fact that I now don’t need to work as I have a works pension and I could take the ‘I m alright Jack’ attitude but I am also a realist and look further than my own life to consider others.

ha,no certainly not a developer ,if I was wouldn’t be in Southeast England! And I’m well aware of how Hampshire has been over developed ,but ,this is what the electorate voted for !!! And no,I’m not a Conservative either !

Where is the public transport?

As it’s run by a private company it’s only running on profitable routes. If I needed a bus I ve got to walk 30 minutes to get to the nearest bus stop

This only serves to impact others. Are you in favour of limiting the number of vehicles per household?

Realistically public transport, ride sharing, and remote working combined with improved infrastructure is what is needed.



Nobody seems to consider the needs of the disabled who cannot use public transport!

Yet over the back of the hill miles and miles of empty space To many people crammed into small areas Let's spread out the country is overpopulated

Same Lower Swanick by the old Moody's boat yard... a set of traffic lights brings the A27 to a stand still to let a 2 or cars out of Nats or Moodys the que goes back to almost Tesco's Bursledon roundabout...by 4:30pm...

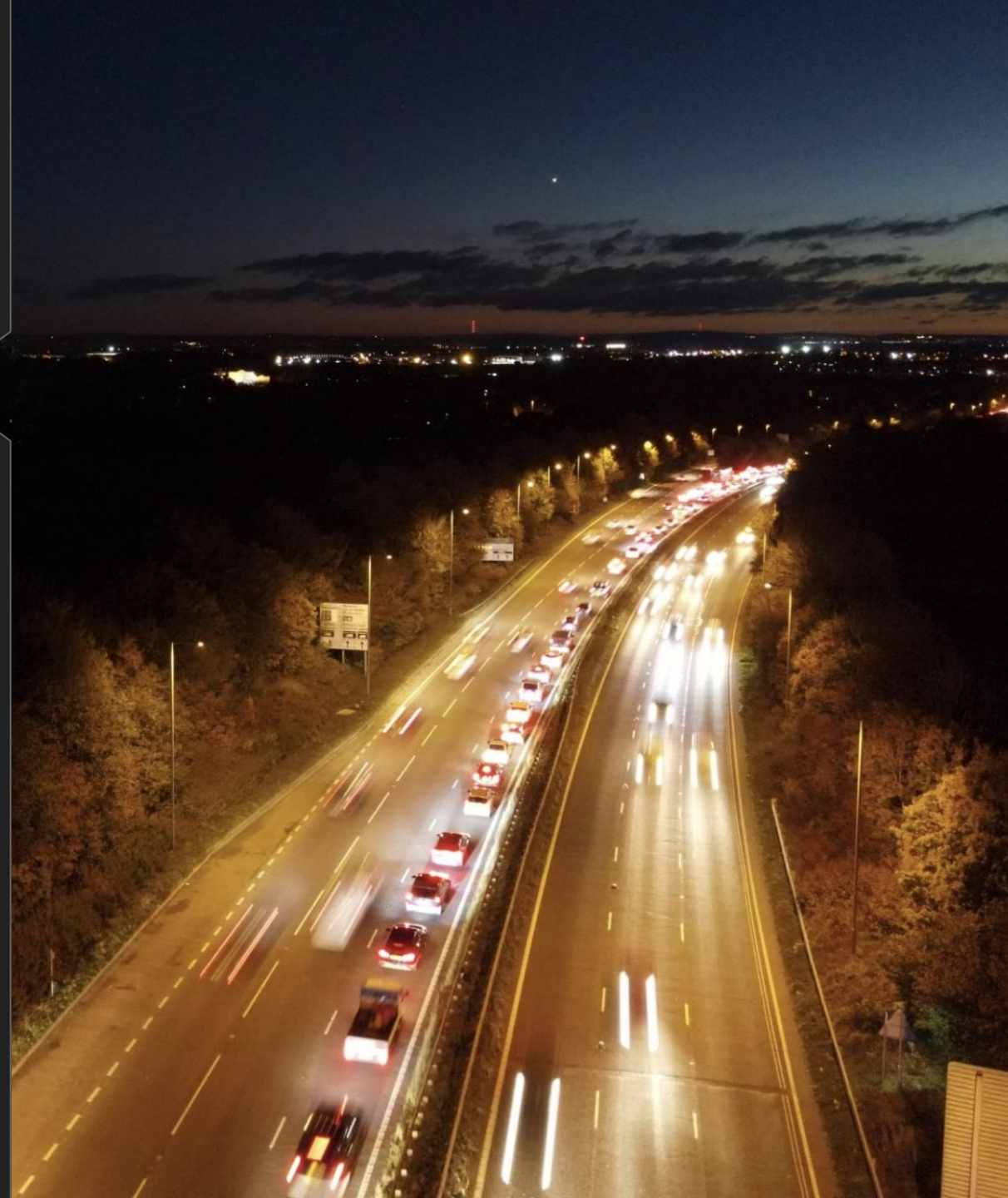
Our leaders just don't listen.. the biggest that doesn't listen is S W.

Combination of things. Crap estates springing up with no shops/services/public transport, means people need cars to go get shopping etc.

Then there's the problems with commuting between Fareham, Gosport, Portsmouth, Southampton with harbours in the way.

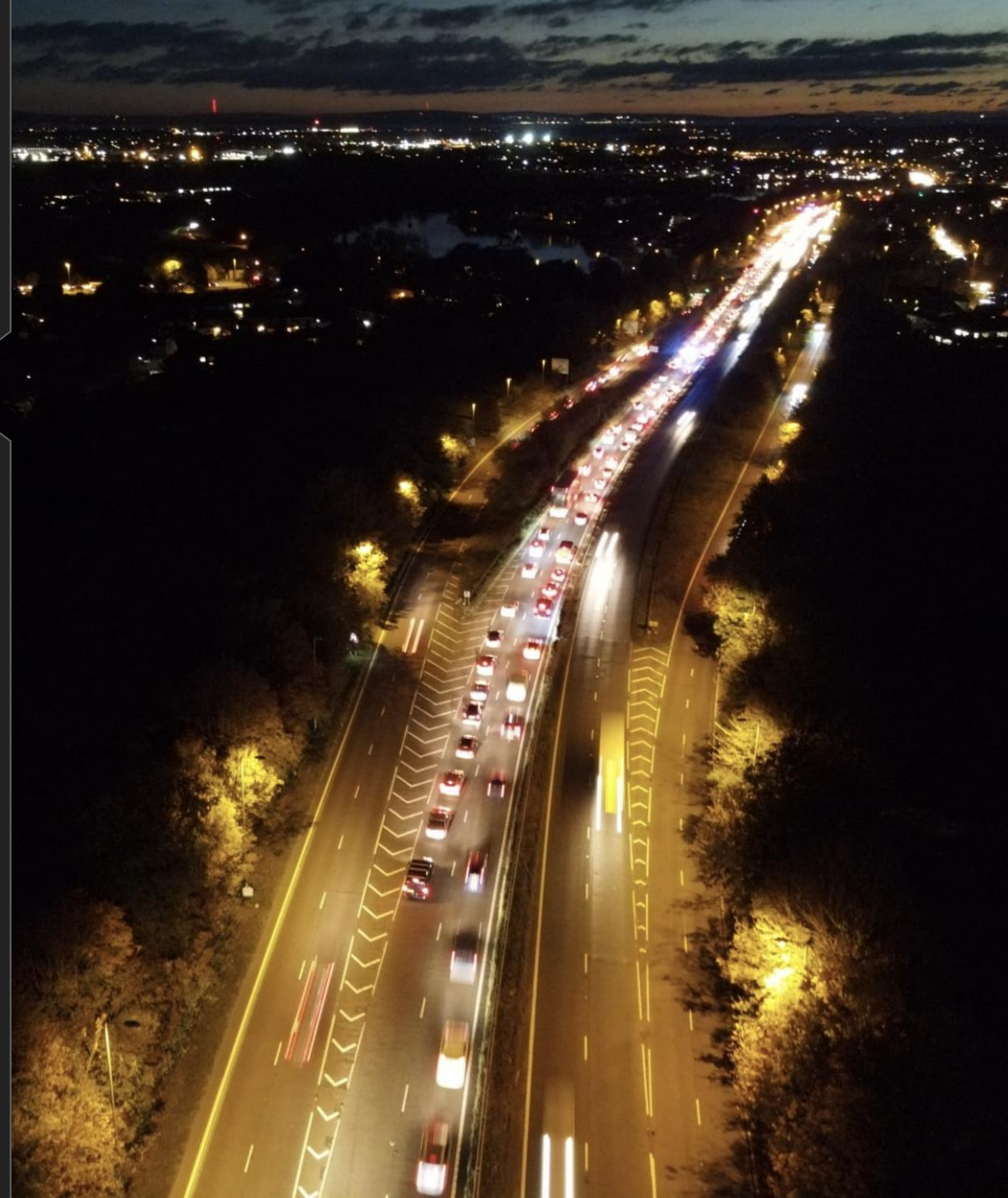
One option would be finally get around to building a local tram system/bus lanes separate to road network and under the harbours, but the local councils can't get their stupid heads around it and the bus companies won't lose profits funding it...

There is no solutions. In and out Gosport . Nearly every house there have at least one vehicle ..a lot more have two or three cars.. plus company vehicles ..than you have buses going in and out . business have vehicles dropping off and picking up things .the listing goes on and on,.



The issue is there is not the infrastructure in place for the road network to grow as we are limited by railway lines and WATER!! so like Locksheath as an example and Titchfield...are both like Islands. With 2 roads on and off...both blocked within no time..even Park Gate during the day (any time) there is a que to the roundabout all the time, anytime....just sheer weight of the traffic.
Add to that there's not the jobs in our area, OK it's got better with slowly more companies moving into units in the area.
But its not overrun with employment in our area. Most people live here yet work where there is more employment like the major cities..

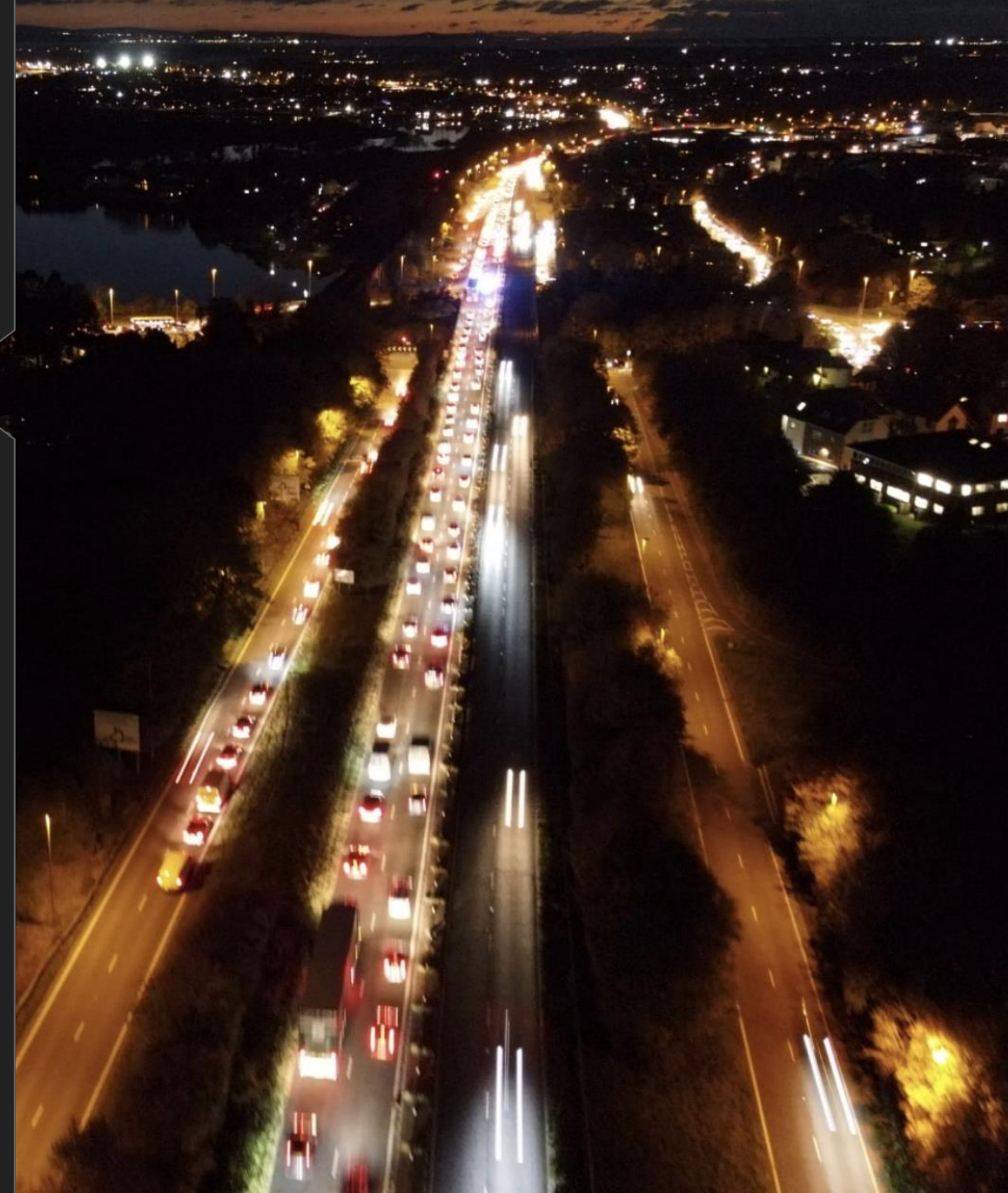
As you can see the comments some for extra development, but the majority are concerned at the extra development without much thought going into the Highways in the area. The Council may say that this will be relieved by the new Stubbington bypass. However, the residents also believe that the 1250 houses planned for land South Of Longfield Avenue will also add to the congestion and will also lead to the bypass being used for extra development off the bypass.



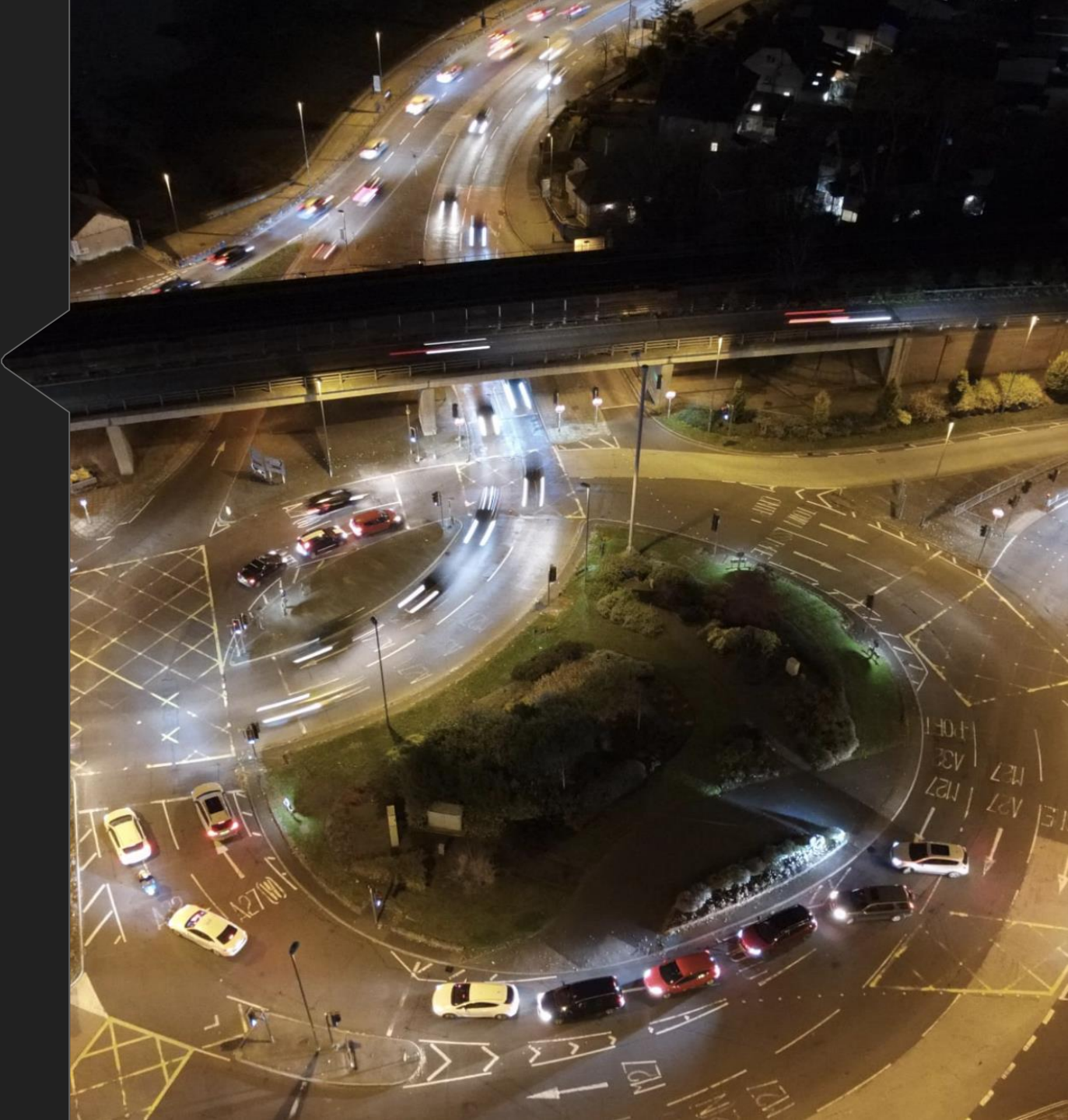
I would also like to add a link to CPRE comments on the local plan.

<https://www.cprehampshire.org.uk/news/significant-wasted-opportunity-cpre-hampshire-on-the-absence-of-south-hampshire-green-belt-in-fareham-local-plan-supplement/?fbclid=IwAR3Sx8qhcHhND0wEnrPIJVdId78jIkOWW AulWOng6wqMkLMsHfr1ZatL4ic>

I think the people of Fareham Borough have come to the conclusion that Welborne Garden village is the best opportunity for Fareham Borough Council to get the housing numbers up to the level that is required. However, there is some reluctance for this to begin despite the fact that it has already been agreed that 1100 houses could be started without the junction off the M27 being started. The people of Fareham are not completely against housing coming to Fareham but as you can see from the pictures in this presentation. This cannot be at the cost of more congestion on our local roads. When the plan for Welborne was originally submitted there plans for 10,000 houses. I obviously cannot speak for all the residents of Fareham and of course Gosport as they are affected by building in the Strategic Gaps but I am sure that the majority of residents would applaud Fareham Borough Council for building outside of the area that will affect both Fareham and Gosport residents. These green areas within the Strategic gaps are important to the settlements to keep their separate identities.



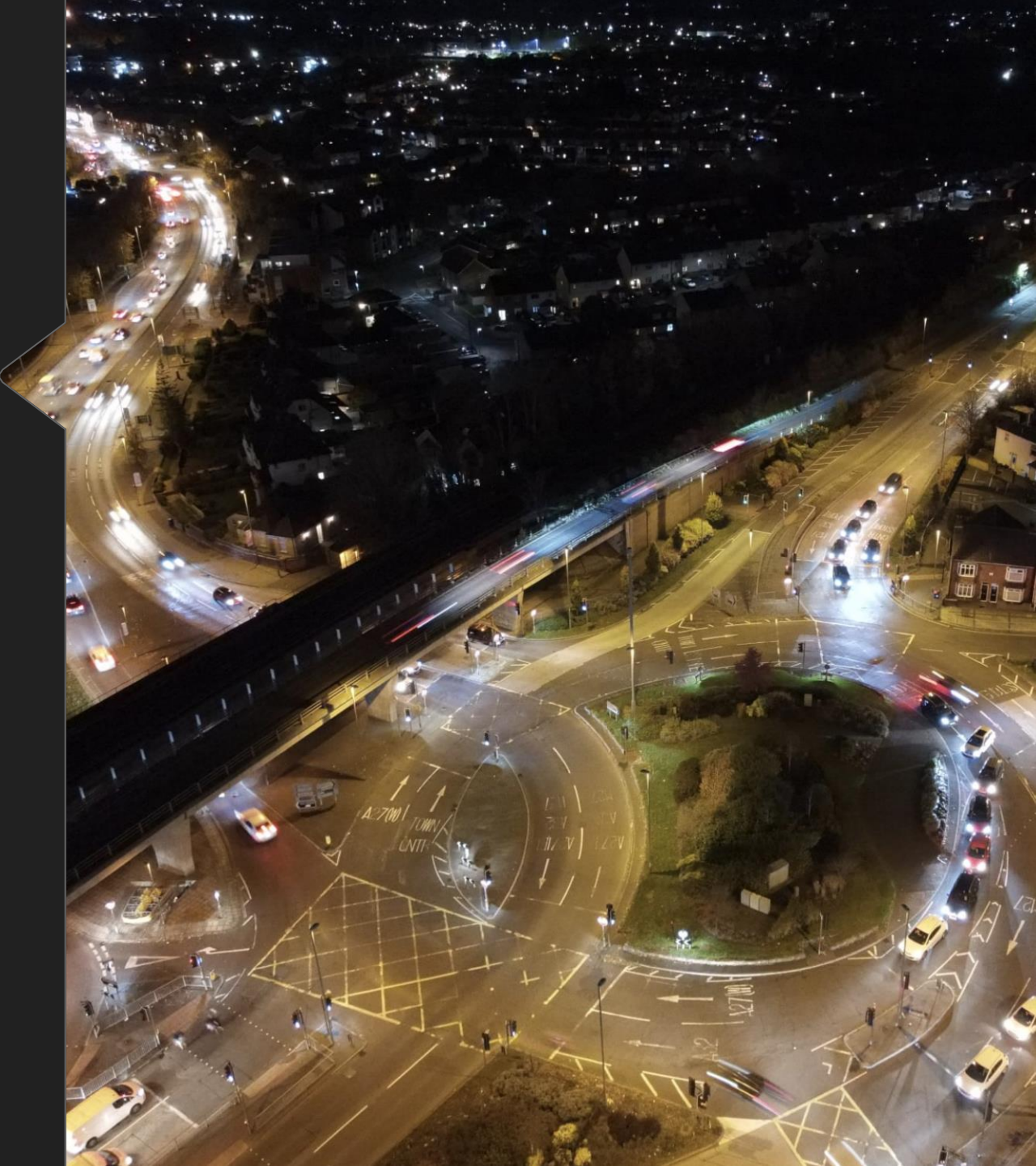
Congested Roads



A32 Into Gosport this is not just about Fareham.



As Above



A27 into Fareham Please consider the impact not just on Fareham but also Gosport and the health impact on the residents, due to build up of traffic. It all very well relying on Electric vehicles, but we are a long way off from that and if this plan does go ahead to include land South of Longfield Avenue there will be no turning back.

