

FAREHAM

BOROUGH COUNCIL

Fareham Local Plan – Shaping Fareham's Future

Fareham Borough Greenspace Study: Addendum 2

January 2014

Contents

	Page
Introduction	2
Explanation of Changes to Fareham Borough Greenspace Strategy set out in Addenda 1 and 2	2
Findings of Addendum 2	3
Provision Analysis	4
Spatial Analysis	4
New Provision	5
Detailed Ward Area Provision	7

List of Tables and Figures

Table 1: Fareham Borough Ward Populations	3
Tables 2-15: Parks and Amenity Open Space, and Natural Greenspace Provision by Ward	7
Table 16: Fareham Borough Greenspace / Open Space Provision Totals	22
Table 17: Surplus and Deficit by Ward	23
Table 18: Overview of Surplus and Deficit in Provision	24
Figure 1: Map Illustrating the Spatial Distribution of Existing Open Space and Natural Greenspace across the Borough.	25
Figure 2: Map Illustrating the Spatial Analyses of Natural Greenspace and Parks and Amenity Open Space Provision across the Borough.	26
Figure 3: Map Illustrating the Spatial Analyses of Parks and Amenity Open Space Provision across the Borough.	27
Figure 4: Map Illustrating the Spatial analyses of Natural Greenspace and Parks and Amenity Open Space Provision across the Borough.	28

Introduction

1. The Fareham Borough Greenspace Study (May 2007) was prepared during 2004-2006. It involved extensive community consultation including a random household survey, a local schools survey, an online survey of voluntary and community groups, and face-to-face consultation with voluntary and community groups.
2. Following the publication of the Greenspace Study, Fareham Borough Council produced an Addendum in 2010 (hereafter referred to as Addendum 1), which provided a quantitative update of Parks and Amenity Open Space, and Natural Greenspace provision in the Borough.
3. This document is the second Addendum (hereafter referred to as Addendum 2) to the Greenspace Study. It builds upon the changes to the original study, and those put forward in Addendum 1.

Changes to Fareham Borough Greenspace Strategy set out in Addenda 1 and 2

4. Addendum 1 has been prepared to account for changes in open space provision across the Borough. It simplifies the quantitative data and accounts for new guidance on planning for Natural Greenspace. The main changes/updates set out in Addendum 1 include the following:
 - Brookers Field and Meadow Walk have been deleted from the data because they are provided for residents of Gosport and are not easily accessible to residents of Fareham or Stubbington;
 - Extent of accessible Natural Greenspace at Fort Fareham corrected by deletion of the area above the ramparts;
 - Land at Seaford Park has been reclassified as sports pitches;
 - To conform with the Natural England standard of at least 2ha of natural greenspace within 300m of all residents and in recognition of the 'multi-functionality' of open space, only Natural Greenspaces of 2ha or more have been categorised Natural Greenspace, with sites of less than 2ha normally reclassified as amenity open space;
 - The whole of an area of Natural Greenspace is included where access is within 300m of the urban area, rather than just the area of the site that is within 300m.
 - Omitting sites with restricted access; and
 - Categorising sites by the predominant typology rather than dividing each area into the different typologies in recognition of the concept of multifunctional use.
5. The main changes/updates set out in Addendum 2 include:

- Omitting sites with limited access.
- Open space is considered by ward area. This is a departure from the approach set out in the Greenspace Study and in the first Addendum. This method is to ensure consistency with the approach to securing open space provision as set out in the Council's Open Space SPD¹.
- All open space that has been provided to support development (for example as part of a S106 agreement accompanying a planning application), and open space provided by the Council, which was not picked up in previous audits.

Findings of Addendum 2

6. The population of the Borough is 111,581 ([2011 Census](#))². The populations for each of the wards are set out in Table 1 below.

Table 1: Fareham Borough Ward Populations

Ward Name	Total Population
Fareham East	7,462
Fareham North	7,287
Fareham North-West	7,401
Fareham South	7,231
Fareham West	6,438
Hill Head	7,170
Locks Heath	7,104
Park Gate	7,811
Portchester East	10,882
Portchester West	6,907
Sarisbury	7,385
Stubbington	6,907
Titchfield	7,280
Titchfield Common	7,133
Warsash	7,183
Total	111,581

Source: Census 2011

¹ Or any replacement policy/guidance document, produced by the Council, relating to open space provision.

² The 2011 census population figures have been used in this Addendum in order to derive the figures in Tables 18 and 19. Updated population figures are not available for the settlement areas used in the original study, which provides additional justification demonstrating why this Addendum has calculated greenspace / open space provision by ward. Aggregations of individual wards are broadly comparable to settlement areas.

7. The following standards regarding open space provision, transposed from the adopted Local Plan Part 1: Core Strategy are set out below:

*Accessible Natural Greenspace: 2.1 ha/1,000 population; and
Parks and Amenity Open Space: 1.5 ha/1,000 population.*

These standards alongside the population figures have formed the basis upon which the surplus or deficit of a specific type of open space has been calculated.

Provision Analysis by Ward

8. The overall result of the corrections and revisions in this Addendum is to increase the total of accessible Natural Greenspace from 266.9ha to 307.69ha, and to increase the total accessible Amenity Open Space from 144.7ha to 189.60ha.
9. Across the whole Borough of Fareham there is a surplus of both Natural Greenspace, and Parks and Amenity Open Space of 84.54ha and 22.22ha, respectively. Additional detail is provided in Table 18.
10. The following wards do not currently have a deficit either in Natural Greenspace, or Parks and Amenity Open Space: Fareham East; Fareham South; Portchester East; Portchester West; Sarisbury; Titchfield Common; Warsash. Additional detail is provided in Table 18.
11. Park Gate and Fareham North-West, Fareham West and Titchfield wards show a deficit in both Natural Greenspace and Parks and Amenity Open Space. Hill Head and Stubbington experience a shortfall in Natural Greenspace. Fareham North shows a deficit in Parks and Amenity Open Space. Additional detail is provided in Table 18.

Spatial Analysis

12. In order to avoid double-counting, the analysis of open space surplus and deficit does not allow provision in adjacent wards within to be considered. Consequently, some wards show deficits despite there being good access to open space in neighbouring wards. In some instances the reverse may be true as physical barriers³ (such as busy roads, rivers and railway lines) may prevent open space being accessible to the resident population. To gain greater understanding of where deficiencies and surpluses arise, a spatial analysis of open space accessibility has

³ The effects of physical barriers on open space accessibility have not been included in the spatial analysis

been undertaken that illustrates cross-ward boundary synergies (See Maps 2-4)⁴.

13. The analysis applies a buffer of 400m around all open spaces. This distance has been chosen as it represents a reasonable walking distance of 400m. This approach applies a slightly larger buffer than that suggested in Natural England's Accessible Natural Greenspace Standards (ANGSt) of 300m. However, the buffer is considered appropriate as it is consistent with the local accessibility standards that have been applied in the assessment of site allocations proposed in the Local Plan.
14. The Borough is well provided in terms of Parks and Amenity Open Space, with only small areas of the urban part of the Borough not being accessible to this type of open space. As shown in Figure 3, these areas tend to be concentrated toward the edges of the urban areas particular around Segensworth, Hook, northwest Portchester, and parts of west, south, central and north Fareham.
15. In terms of Natural Green Space, and as shown on Figure 2, good accessibility to this type of open space is less widespread with numerous areas showing access deficiencies. With the exception of the Western Wards⁵, central areas of each settlement tend to be under served; perhaps reflecting the form of the development at that time where emphasis to open space did not tend toward Natural types of provision. This highlights the importance of preserving the natural character of green areas on the edge of settlements, and countryside together with increasing the public access to these areas so people are able to benefit from such assets.
16. When both types of open space are considered in combination, the Borough is relatively well-served, with deficiencies in open space accessibility broadly reflecting the shortfalls in Parks and Amenity Open Space, as discussed above. This spatial analysis should help to provide evidence that will enable Council resources to be targeted toward areas which are of the most underprovided.

New Provision

17. New open space is planned at Daedalus Airfield⁶ where it is proposed that there will be an additional 2.1ha of Parks and Amenity Open Space. This includes an extension to East House Avenue public open space, new allotments and a community orchard. 13.4ha of Natural Greenspace will be provided at Broom Way Fields to the northwest of Daeadlus. A further 9.6ha of Natural Greenspace land will

⁴ The analysis does not account for open space provision in the neighbouring districts of Gosport, Winchester, Portsmouth and Eastleigh

⁵ Comprising of Locks Heath, Park Gate, Titchfield Common, Warsash, Sarisbury and parts of Titchfield:

⁶ Refer to Local Plan Part 2: Development Sites and Policies Plan Policy DSP12: Public Open Space Allocations. Open space amount is indicative.

be secured to the south of Hanger East and Hangers West, although public access to this area is restricted and cannot therefore be counted toward open space provision. This planned open space has not been included in the open space provision calculations included in this Addendum.

18. New Parks and Amenity Open Space is planned at Coldeast⁷ to provide an additional 6.3ha of land for community facilities, 0.4ha of play space, and 2.6ha for informal recreation. Further, an additional 16.0ha of Natural Greenspace will be provided at the site. This new provision will provide significant open space gains for Park Gate ward, which will be accessible to other the population in adjacent wards and will help to address deficiencies in the adjacent ward of Locks Heath. This planned open space has not been included in the open space provision calculations included in this report.

⁷ Refer to Local Plan Part 2: Development Sites and Policies Plan Policy DSP12: Public Open Space Allocations. The amount of open space is indicative.

Detailed Ward Area Provision

Table 1: Fareham East

Natural Greenspace		
Site ID	Site Name	Site Size (Ha)
30	Salterns	5.77
97	Wallington Water Meadow	4.02
101	Furzehall Avenue	6.99
Total Area		16.78

Parks and Amenity Open Space		
Site ID	Site Name	Site Size (Ha)
14	Bosuns Close/Fen Avenue Open Space	0.84
15	Mainsail Drive Open Space	0.12
31	Eastern Parade Open Space	2.06
91	William Price Gardens Open Space	1.62
92	River Wallington Bankside	0.05
93	Fareham Cemetery	5.39
94	St.Peter and St.Paul Churchyard	0.88
95	Central Development Area	0.50
96	Garden of Reflection (Sensory Garden)	0.24
98	Westbury Manor Gardens	0.13
102	Lysses Open Space	0.92
103	Lysses Open Space	0.42
104	St. Christopher's	0.18
105	St Christopher's Open Space (east)	0.23
106	Waterside Gardens	0.30
109	Bath Lane Recreation Ground	0.48
Total Area		14.36

Table 2: Fareham North

Natural Greenspace		
Site ID	Site Name	Site Size (Ha)
117	Funtley Lake	4.56
118	The Deviation Line	14.20
119	Roebuck Avenue	2.71
Total Area		21.47

Parks and Amenity Open Space		
Site ID	Site Name	Site Size (Ha)
74	Henley Gardens Open Space	0.45
111	Funtley Recreation Ground	1.41
112	Funtley Recreation Ground	0.24
113	Lynton Gardens Open Space	0.52
115	Park Lane Recreation Ground	7.28
116	Dryden Close Open Space	0.16
Total Area		10.06

Table 3: Fareham North West

Natural Greenspace		
Site ID	Site Name	Site Size (Ha)
118	The Deviation Line	14.2
Total Area		14.2

Parks and Amenity Open Space		
Site ID	Site Name	Site Size (Ha)
57	Hammond Road Open Space	0.19
58	Beaumont Rise Open Space	0.08
59	Ocean Close Open Space	0.27
60	Nashe Way Open Space	0.29
61	Privett Road Woodland	1.91
63	Frosthole Crescent Open Space	0.25
64	Gifford Close Open Space	0.40
65	Green Walk Open Space	0.10
66	Greendale Close Open Space	0.19
67	Hammond Road	0.14
68	Hayes Close Open Space	0.23
69	Skelly's Wood West	0.28
70	Thames Drive	0.65
71	Fareham Park	2.98
73	Woodhall Way West Open Space	0.25
74	Henley Gardens Open Space	0.45
78	The Copse	0.25
79	Skelly's Wood East	1.24
514	Woodhall Way East Open Space	0.21
Total Area		10.37

Table 4: Fareham South

Natural Greenspace		
Site ID	Site Name	Site Size (Ha)
25	Fort Fareham	5.77
34	The Gillies	6.89
36	Cams Alders Sports Ground North	0.70
37	Cams Alders Sports Ground South	2.12
Total Area		15.47

Parks and Amenity Open Space		
Site ID	Site Name	Site Size (Ha)
8	Longfield Avenue	0.57
10	Cams Alders Recreation Ground	10.75
13	Barnfield Court Green Corridor	0.16
16	Briarwood Close	0.10
18	Redlands Lane Open Space	0.22
20	Crossfell Walk	0.17
22	Westley Grove	0.13
23	The Gillies Open Space	0.51
24	Longfield Avenue	0.29
26	Alexander Grove Open Space	0.35
27	Crossfell Walk Green Corridor	0.55
28	Coniston Walk	0.71
29	Cambrian Walk	0.57
130	Bishopfield Road Green Corridor	1.65
Total Area		16.71

Table 5: Fareham West

Natural Greenspace		
Site ID	Site Name	Site Size (Ha)
Total Area		0

Parks and Amenity Open Space		
Site ID	Site Name	Site Size (Ha)
2	Blackbrook Road Green	0.11
5	Place House Close Green Corridor	0.23
6	Blackbrook Park	0.38
7	Blackbrook Park	1.84
127	Cedar Way Open Space	0.09
128	Willow Tree Gardens Open Space	0.09
129	Greyshott Avenue	0.50
131	Malvern Avenue Open Space	0.39
132	Greyshott Avenue	0.23
134	Peak Lane Green Corridor	1.34
Total Area		5.20

Table 6: Hill Head

Natural Greenspace		
Site ID	Site Name	Site Size (Ha)
154	Seafield Park	4.23
Total Area		4.23

Parks and Amenity Open Space		
Site ID	Site Name	Site Size (Ha)
139	Hill Head Open Space	0.16
140	Moody Road to Mancroft Avenue Open Space	0.64
141	Cowdray Park	0.29
142	Mancroft Avenue Open Space	0.83
144	Mulberry Avenue	0.40
145	Salterns Park	3.75
147	Whaddon Chase	0.22
150	Seafield Park West	0.61
151	Old Street/Crabthorne Lane/Fitzwilliam Avenue	1.18
152	Cliff Road Bank	0.71
153	Seafield Park	4.77
301	Old Street/Dover Close Open Space	0.23
302	Plymouth Drive Green Corridor	0.18
314	Finisterre/Fastnet Way Open Space	0.17
315	Fair Isle Close Open Space	0.10
316	Plymouth Drive Open Space	2.32
317	Sea Kings Open Space	0.19
318	Viking Close Open Space	0.16
Total Area		16.90

Table 7: Locks Heath

Natural Greenspace		
Site ID	Site Name	Site Size (Ha)
212	Locks Heath Centre	4.16
402	Woodpecker Copse / St. Johns Greenway	2.44
Total Area		6.59

Parks and Amenity Open Space		
Site ID	Site Name	Site Size (Ha)
162	St Michaels Road Open Space	0.32
165	Monterey Drive	0.48
166	Genesis Young Persons Centre	0.16
179	Upper Brook Road/Raley Road Green Corridor	0.60
190	Laurel Gardens	0.18
195	Drake Close Open Space	0.12
196	Downland Close Open Space	0.39
197	Locks Heath Centre Open Space	2.09
198	Cunningham Drive/Topiary Gardens	0.36
199	Hollybrook Gardens	0.82
200	Crispin Close/St Josephs Close	0.65
379	Hazel Grove Green Corridor	0.29
395	St.Johns Cemetery	0.3
400	Locks Heath House Park	1.26
401	Coombedale/St. Tristan Close Green Corridor	0.82
Total Area		8.84

Table 8: Park Gate

Natural Greenspace		
Site ID	Site Name	Site Size (Ha)
297	Addison Road/Stalybridge Close Open Space	3.52
487	Addison Road (NE of Rec Grnd)	5.81
Total Area		9.33

Parks and Amenity Open Space		
Site ID	Site Name	Site Size (Ha)
158	Priory Park	0.44
160	Mallow Close Open Space	0.11
161	Buttercup Way Open Space	0.17
167	Holland Park	0.26
168	Holland Park	0.09
169	Dene Close Open Space	0.14
170	Winnards Park Open Space	0.16
172	Priory Park	2.54
178	Warsash Road/Upper Brook Road Green Corridor	1.18
179	Upper Brook Road/Raley Road Green Corridor	0.60
181	Yarrow Way Open Space	0.05
202	Badgers Copse Greenway	0.19
203	Badgers Copse	0.14
204	Badgers Copse Open Space	0.14
206	Red Oaks Drive	0.42
286	Bridge Road Woodland Strip	1.15
289	Stalybridge Close Open Space	0.09
290	Ironbridge Crescent Open Space	0.15
Total Area		8.02

Table 9: Portchester East

Natural Greenspace		
Site ID	Site Name	Site Size (Ha)
216	Anson Grove	2.90
228	Portsdown Hill	8.65
235	Orchard Grove/Commodore Park	3.58
239	Orchard Grove/Commodore Park	3.09
256	Wicor Sports Ground	3.49
258	Portchester Castle	2.04
261	Castle Shore Park	6.60
Total Area		30.34

Parks and Amenity Open Space		
Site ID	Site Name	Site Size (Ha)
217	Chalk Pit	1.11
236	St. Mary's Churchyard	0.81
237	Roman Grove Cemetery	1.93
238	Gladstone Gardens Open Space	0.15
244	Newtown Open Space	0.35
245	Kenwood Road Open Space	1.73
247	Castle Street Recreation Ground	3.33
249	Commodore Park Open Space	0.51
250	Sissinghurst Open Space	0.54
251	Shrubbery Close	0.40
252	Wessex Gardens	0.08
254	Portchester Park (1)	0.76
255	Portchester Park (2)	0.88
257	Harbour View	4.49
259	Portchester Castle	3.61
260	Castle Street Recreation Ground	1.45
Total Area		22.14

Table 10: Portchester West

Natural Greenspace		
Site ID	Site Name	Site Size (Ha)
229	Fort Nelson	3.45
230	Red Barn Open Space	3.19
274	Birdwood Grove	4.27
503	Cams Coastline	4.45
Total Area		15.35

Parks and Amenity Open Space		
Site ID	Site Name	Site Size (Ha)
218	Dore Avenue Open Space	1.91
219	Dore Avenue Open Space	3.01
221	Camelot Crescent Open Space	0.20
222	Cornaway Lane Open Space	0.78
223	Harting Gardens	0.17
224	Lancaster Close Open Space	0.38
225	Simpson Close	0.52
226	Steep Close	0.17
270	Romsey Avenue Open Space	0.08
271	The Ridgeway	0.18
272	Condor Avenue Open Space	0.56
275	Birdwood Grove	3.26
Total Area		11.20

Table 11: Sarisbury

Natural Greenspace		
Site ID	Site Name	Site Size (Ha)
285	Wendleholme	10.43
298	Holly Hill Woodland Park	28.05
446	Swanwick Nature Reserve	24.57
454	Bushy Land	4.07
458	Whiteley Green Corridors	2.23
460	Gull Coppice	12.03
463	Quaveys Copse	4.37
480	Air Traffic Control Centre Woodland (north)	10.60
483	Ashley Wood	3.06
490	South Winnards (Part of Holly Hill Woodland Park)	2.33
Total Area		101.73

Parks and Amenity Open Space		
Site ID	Site Name	Site Size (Ha)
280	Lower Swanwick Road Open Space	0.84
284	Holly Hill Cemetery	0.72
287	St.Paul's Churchyard and Cemetery	1.01
288	Coldeast Close Open Space (1)	0.06
292	Swanwick Lane Play Area	0.15
295	Coldeast Close Open Space (2)	0.19
444	Whiteley Green Corridors	0.34
447	Whiteley Community Centre Roundabout	0.12
449	Sweethills Crescent Open Space	0.96
450	Sweethills Crescent Open Space	0.31
451	Clydesdale Open Space	0.24
452	Clydesdale Open Space	0.72
455	Burridge Recreation Ground	0.24
456	Yew Woodland Park (west)	0.68
457	Yew Woodland Park (east)	0.42
459	North Whitely Green Corridor	0.87
464	Strawberry Track	1.17
518	Yew Tree Drive Woodland Corridor	1.66
519	Land West of Yew Tree Drive	0.20
522	Keats Close Link	0.27
523	Sweethills Crescent Corridor	0.54
524	Rookery Avenue West	0.47
Total Area		12.17

Table 12: Stubbington

Natural Greenspace		
Site ID	Site Name	Site Size (Ha)
305	Tips Copse	2.49
Total Area		2.49

Parks and Amenity Open Space		
Site ID	Site Name	Site Size (Ha)
148	East House Avenue Open Space	0.58
303	Stubbington Recreation Ground	0.54
309	Stubbington Recreation Ground	1.97
310	Crofton Churchyard and Cemetery	2.59
311	Stroud Green Lane Open Space	0.75
312	Stubbington Green South	0.03
313	Marks Road Open Space	0.10
319	Metcalfe Avenue Open Space	0.31
321	Puffin Crescent Open Space	0.14
322	The Oaks Open Space	0.08
323	Marks Tey Road Open Space	0.31
324	Rectory Close/Deal Close Open Space	0.14
325	Stubbington Green North	0.13
326	Stubbington Paddock	1.98
327	Cuckoo Lane Open Space	0.42
330	Marks Tey Road	1.18
331	Lychgate Green	0.22
332	Stroud Green Open Space	0.61
333	Grasmere Open Space	0.30
334	Grassmere Open Space	0.27
507	Metcalfe Avenue	0.19
Total Area		12.83

Table 13: Titchfield

Natural Greenspace		
Site ID	Site Name	Site Size (Ha)
370	Segensworth Open Space	2.15
Total Area		2.15

Parks and Amenity Open Space		
Site ID	Site Name	Site Size (Ha)
133	Fair Acre Rise Open Space	0.85
351	St. Peters Churchyard	0.97
352	Clay Pits/Posbrook Lane Cemetery	0.83
355	Bellfield Open Space	0.30
357	Jacaranda Close Open Space	0.17
358	Valerian Avenue Open Space	0.19
359	Segensworth Copse	0.52
361	Valerian Avenue Open Space	0.07
363	Segensworth Play Area	0.26
364	Segensworth Road Open Space	0.30
367	Barrys Meadow	0.66
368	Barrys Meadow	0.39
369	Bridge Road Open Space	1.43
371	Titchfield Recreation Ground	1.18
509	Purslane Gardens	0.73
510	West Way	0.10
Total Area		8.95

Table 14: Titchfield Common

Natural Greenspace		
Site ID	Site Name	Site Size (Ha)
380	Kites Croft	17.06
Total Area		17.06

Parks and Amenity Open Space		
Site ID	Site Name	Site Size (Ha)
192	Birchen Road	0.05
193	Longacres Green Corridor	0.64
208	Park Glen Open Space	0.10
209	Longacres Open Space	1.07
210	Wheatlands Open Space	0.31
381	Ascot Close Open Space	0.24
382	Course Park	0.49
383	Course Park Crescent	1.19
385	Oriel Drive Open Space	0.74
388	Kites Croft	0.08
390	Goodwood Close Open Space	0.18
391	Abshott Road Community Centre Grounds	0.61
397	Locks Heath House Park	0.77
403	Orwell Crescent Open Space	0.16
404	Abshott Park	1.09
406	Chartwell Close Open Space	0.48
407	Streamleaze Green Corridor	1.17
408	Huxley Close Open Space	0.43
409	Hunts Pond Road Recreation Ground	4.70
Total Area		14.49

Table 15: Warsash

Natural Greenspace		
Site ID	Site Name	Site Size (Ha)
424	Warsash Common	25.28
426	Hook Lane Recreation Ground	2.95
473	Hook with Warsash Local Nature Reserve (SE)	17.33
493	Fleet End Woodland (Fleet End Bottom)	4.94
Total Area		50.50

Parks and Amenity Open Space		
Site ID	Site Name	Site Size (Ha)
179	Upper Brook Road/Raley Road Green Corridor	0.60
178	Warsash Road/Upper Brook Road Green Corridor	1.18
173	Cockleshell Close Open Space	0.11
174	Irelands Lane Open Space	1.28
175	Irelands Lane Open Space	0.98
176	Shorewood Close Open Space	0.15
177	King George V Recreation Ground	0.26
405	Sovereign Crescent Open Space	0.59
410	Sovereign Crescent Green Corridor	0.32
416	Warsash Recreation Ground	0.73
417	Sandy Croft	0.03
419	St. Mary's Churchyard	0.79
421	Passage Lane Open Space	0.43
422	Strawberry Fields Open Space	3.68
425	Shell Croft Open Space	0.12
428	New Road Recreation Ground	0.92
429	Hook Lane Recreation Ground	3.66
472	Little Abshot Road	1.55
Total Area		17.36

Table 16: Fareham Borough Greenspace / Open Space Provision Totals

Ward	Natural Greenspace (ha)	Parks and Amenity Open Space (ha)
Fareham East	16.78	14.36
Fareham North	21.47	10.06
Fareham North-West	14.20	10.37
Fareham South	15.47	16.71
Fareham West	0.00	5.20
Hill Head	4.23	16.90
Locks Heath	6.59	8.84
Park Gate	9.33	8.02
Portchester East	30.34	22.14
Portchester West	15.35	11.20
Sarisbury	101.73	12.17
Stubbington	2.49	12.83
Titchfield	2.15	8.95
Titchfield Common	17.06	14.49
Warsash	50.50	17.36
Borough Total	307.69	189.60

Table 17: Surplus/Deficit by Ward⁸

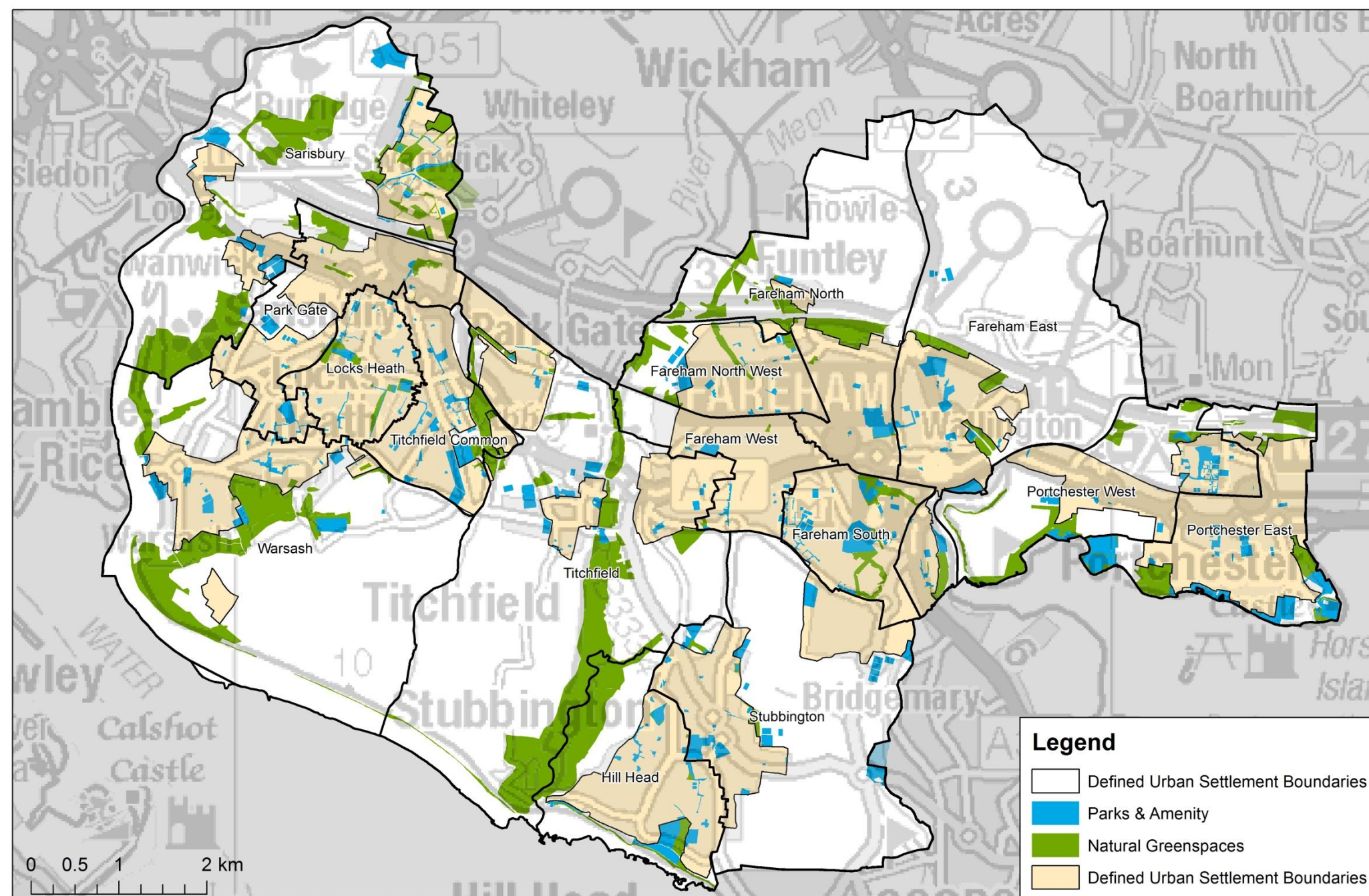
Ward Name	Natural Greenspace			Parks & Amenity Open Space		
	Existing (Ha)	Requirement (2ha per 1,000 population)	Surplus/Deficit (Ha)	Existing (Ha)	Requirement (1.5ha per 1,000 population)	Surplus/Deficit (Ha)
Fareham East	16.78	14.92	1.86	14.36	11.19	3.17
Fareham North	21.47	14.57	6.90	10.06	10.93	-0.87
Fareham North-West	14.20	14.80	-0.60	10.37	11.10	-0.73
Fareham South	15.47	14.46	1.01	16.71	10.85	5.86
Fareham West	0.00	12.88	-12.88	5.20	9.66	-4.46
Hill Head	4.23	14.34	-10.11	16.90	10.76	6.14
Locks Heath	6.59	14.21	-7.62	8.84	10.66	-1.82
Park Gate	9.33	15.62	-6.29	8.02	11.72	-3.70
Portchester East	30.34	21.76	8.58	22.14	16.32	5.82
Portchester West	15.35	13.81	1.54	11.20	10.36	0.84
Sarisbury	101.73	14.77	86.96	12.17	11.08	1.09
Stubbington	2.49	13.81	-11.32	12.83	10.36	2.47
Titchfield	2.15	14.56	-12.41	8.95	10.92	-1.97
Titchfield Common	17.06	14.27	2.79	14.49	10.70	3.79
Warsash	50.50	14.37	36.13	17.36	10.77	6.59
Total	307.69	N/A	84.54	189.60	N/A	22.22

⁸ Required by standards set out in the Local Plan Part 1: Core Strategy.

Table 18: Overview of Surplus and Deficit in Provision

Ward Name	Natural Greenspace Surplus/Deficit (Ha)	Parks & Amenity Surplus/Deficit (Ha)	Total Provision (Ha)
Fareham East	1.86	3.17	5.03
Fareham North	6.90	-0.87	6.03
Fareham North-West	-0.60	-0.73	-1.33
Fareham South	1.01	5.86	6.87
Fareham West	-12.88	-4.46	-17.34
Hill Head	-10.11	6.14	-3.97
Locks Heath	-7.62	-1.82	-9.44
Park Gate	-6.29	-3.70	-9.99
Portchester East	8.58	5.82	14.40
Portchester West	1.54	0.84	2.38
Sarisbury	86.96	1.09	88.05
Stubbington	-11.32	2.47	-8.85
Titchfield	-12.41	-1.97	-14.38
Titchfield Common	2.79	3.79	6.58
Warsash	36.13	6.59	42.72
Borough Total	84.54	22.22	106.76

Figure 1: Map Illustrating the Spatial Distribution of Existing Open Space and Natural Greenspace across the Borough.



Parks & Amenity & Natural Greenspaces (of unrestricted and limited access)

FAREHAM
BOROUGH COUNCIL



This map is reproduced from Ordnance Survey material with the permission of Ordnance Survey on behalf of the Controller of Her Majesty's Stationary Office © Crown Copyright. Unauthorised reproduction infringes Crown Copyright and may lead to prosecution or civil proceedings. Licence 100019110. 2014

Figure 2: Map Illustrating the Spatial Analyses of Natural Greenspace Provision across the Borough.

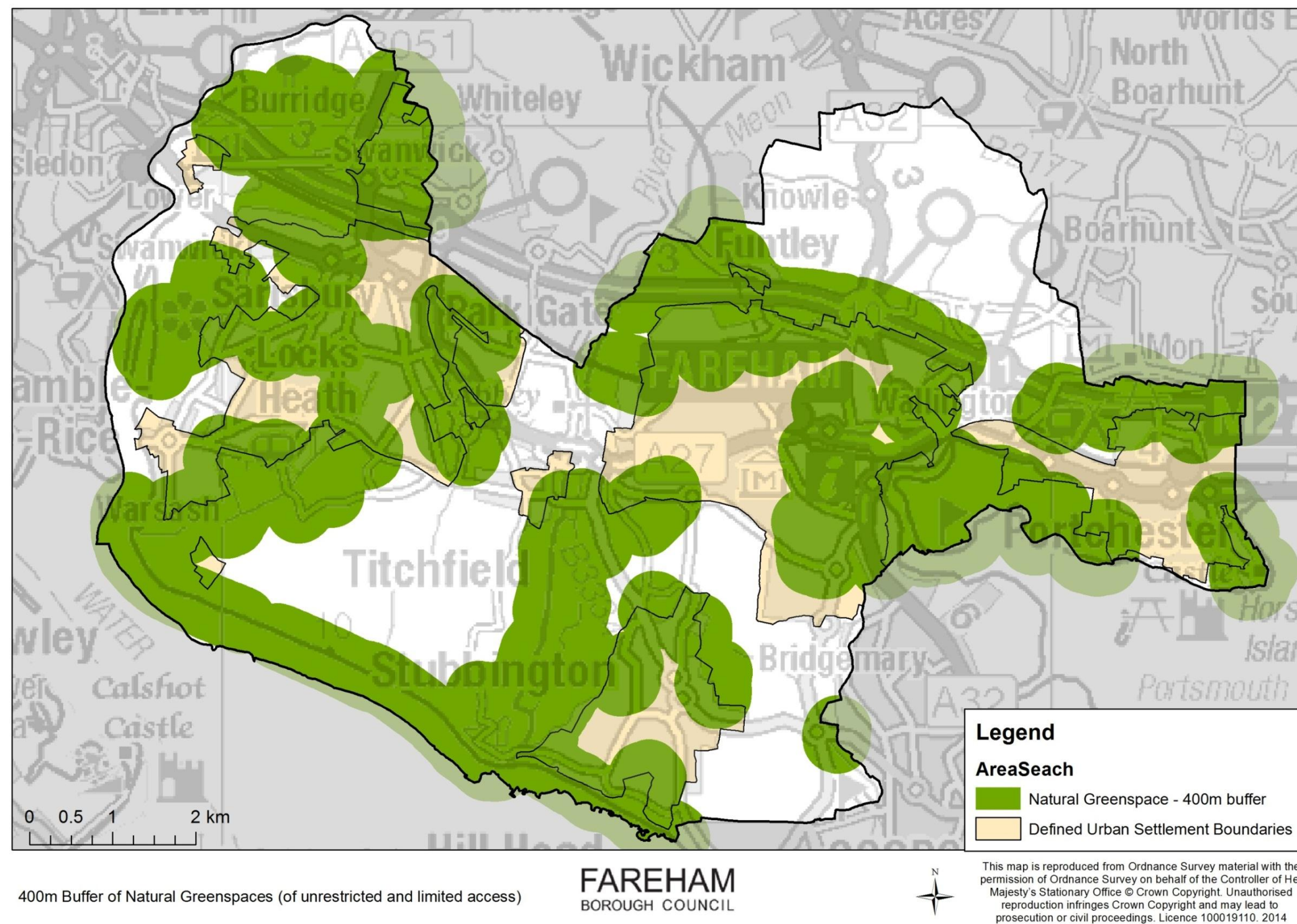


Figure 3: Map Illustrating the Spatial Analyses of Parks and Amenity Open Space Provision across the Borough.

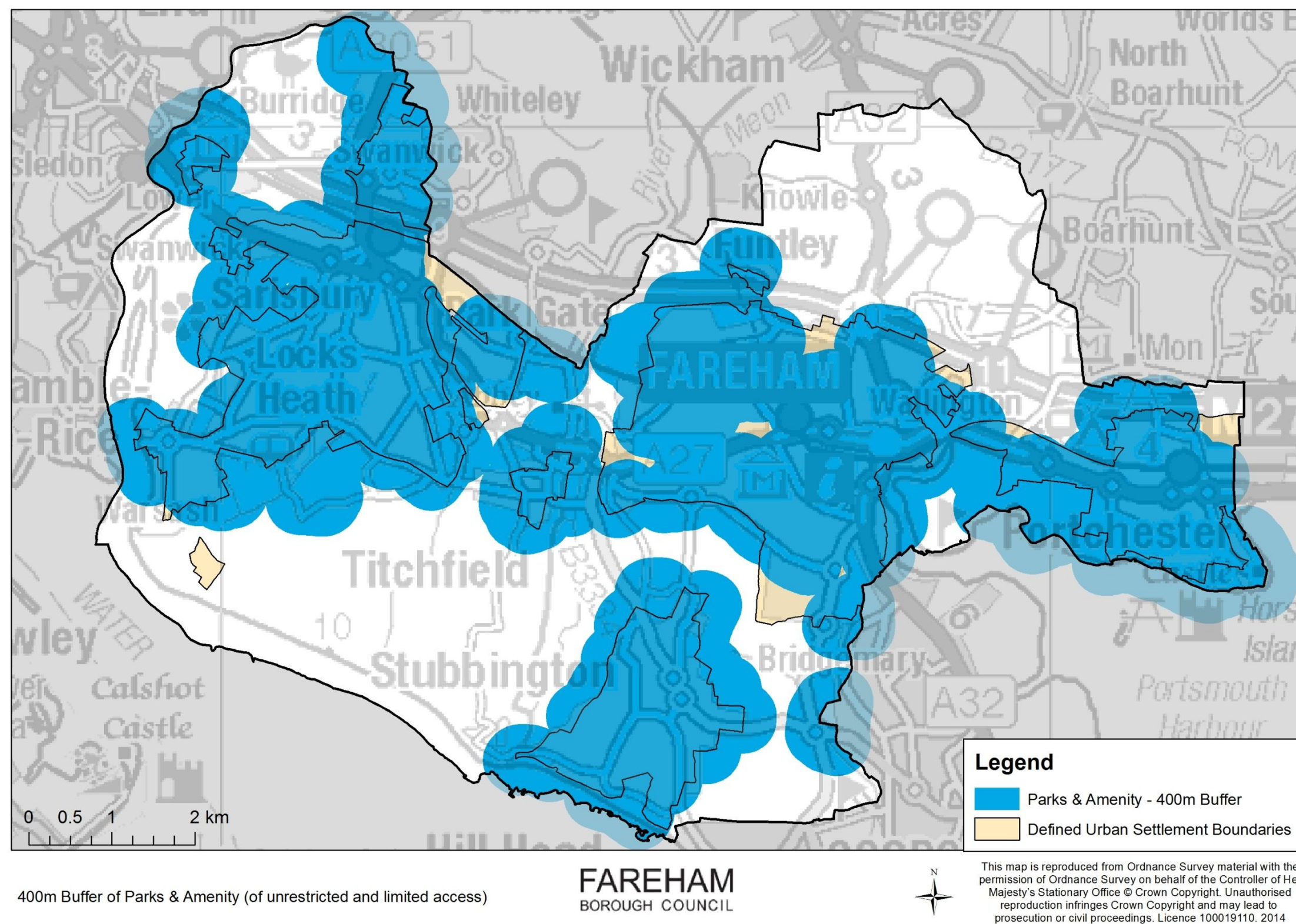


Figure 4: Map Illustrating the Spatial Analyses of Natural Greenspace, and Parks and Amenity Open Space Provision across the Borough.

