

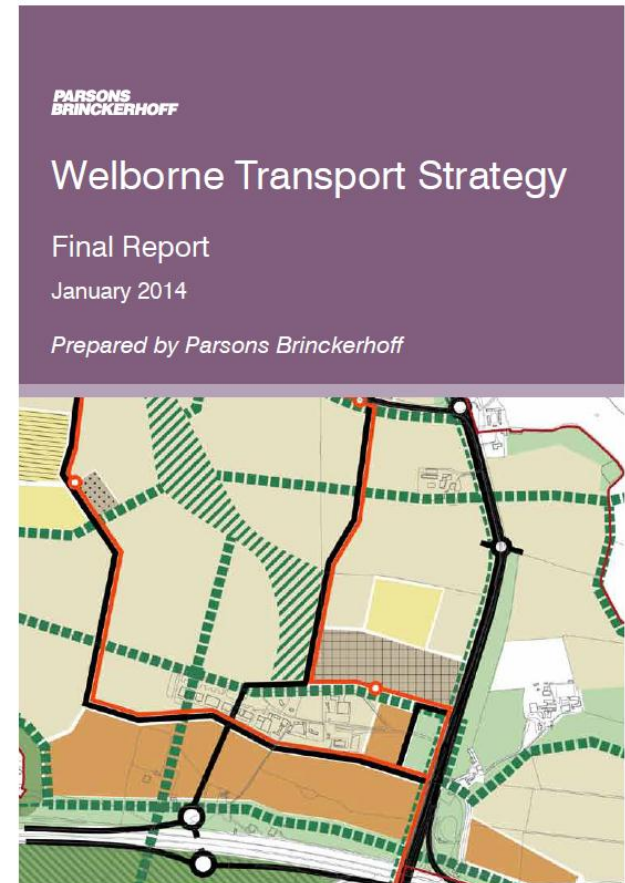
# Welborne Standing Conference

## Local Traffic Workshop

28 March 2014

# Transport Strategy 2014

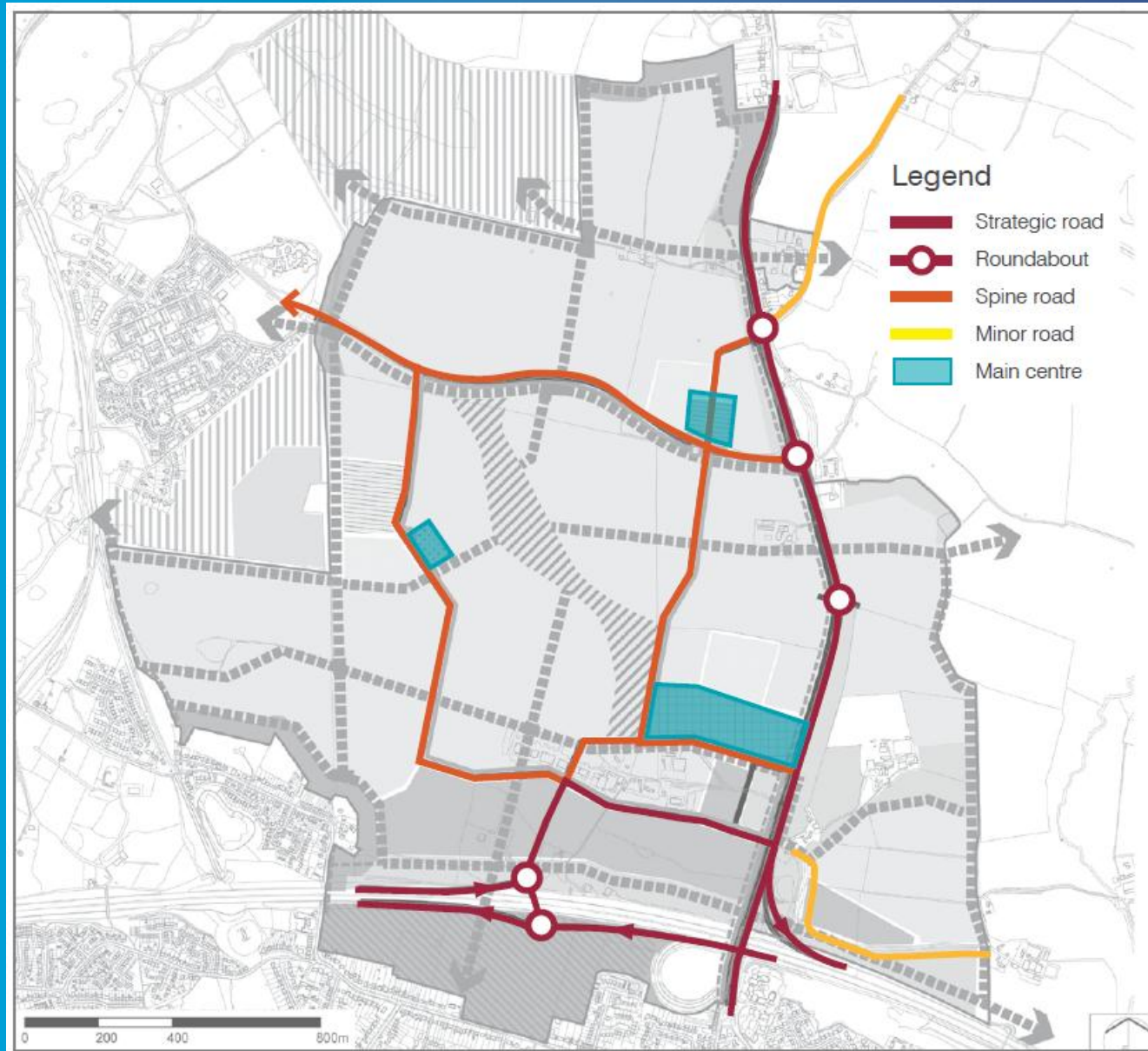
- Revised Strategy
  - Changes in Concept Masterplan
  - Timescale for improvements to J10
  - Greater detail on wider pedestrian and cycle links
  - Design guidance for A32
  - Updated position on local roads mitigation – key corridors and potential traffic management



# Welborne Plan

- Policy WEL 24 Strategic Road Access
  - Junction 10 and Junctions 9 and 11
- Policy WEL 26 Public Transport
  - BRT, local buses and potential rail halt
- Policy WEL 27 Encouraging Sustainable Choices
  - Travel Plans for walking, cycling and public transport

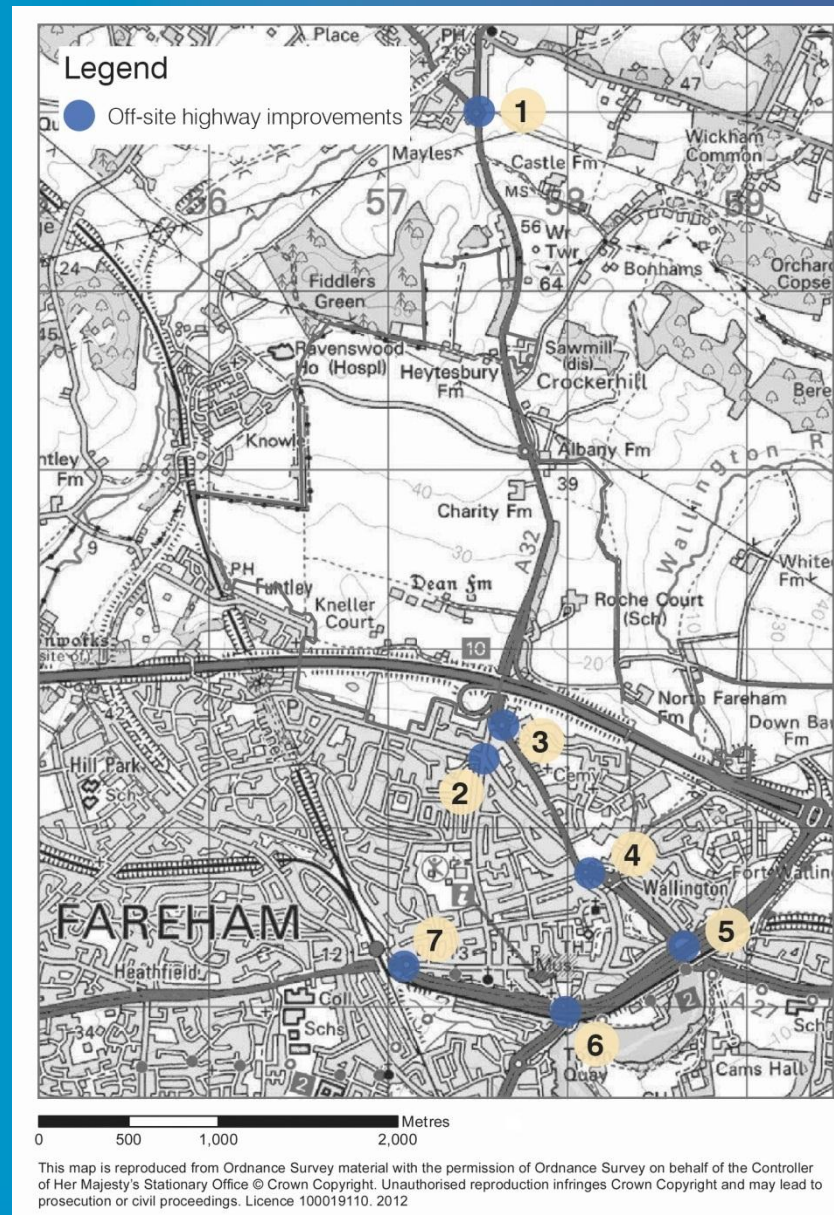
# On Site Network Main Routes



# Welborne Plan

- Policy WEL 25 – Local Road Transport and Access
  - Improvements to A32
  - Network of routes through the site, including north-south
  - Potential closure of Pook Lane to vehicular traffic
  - Delivery of necessary improvements to nearby road network
- Policy WEL 28 Walking and Cycling
  - Pedestrian and cycle routes to Fareham, Wickham, Funtley and Whiteley

# Off-site Highway Improvements

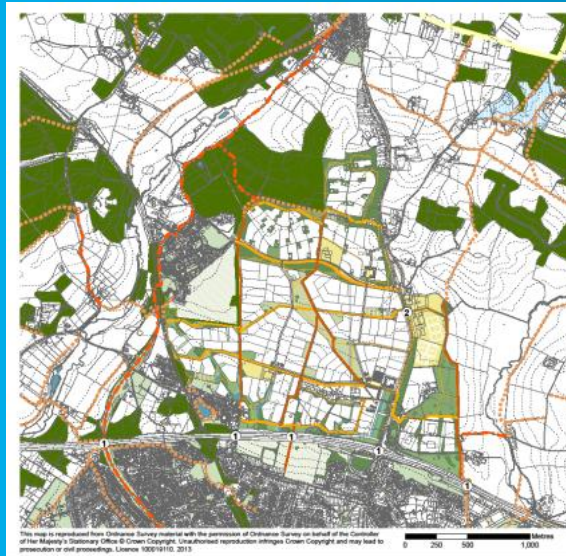




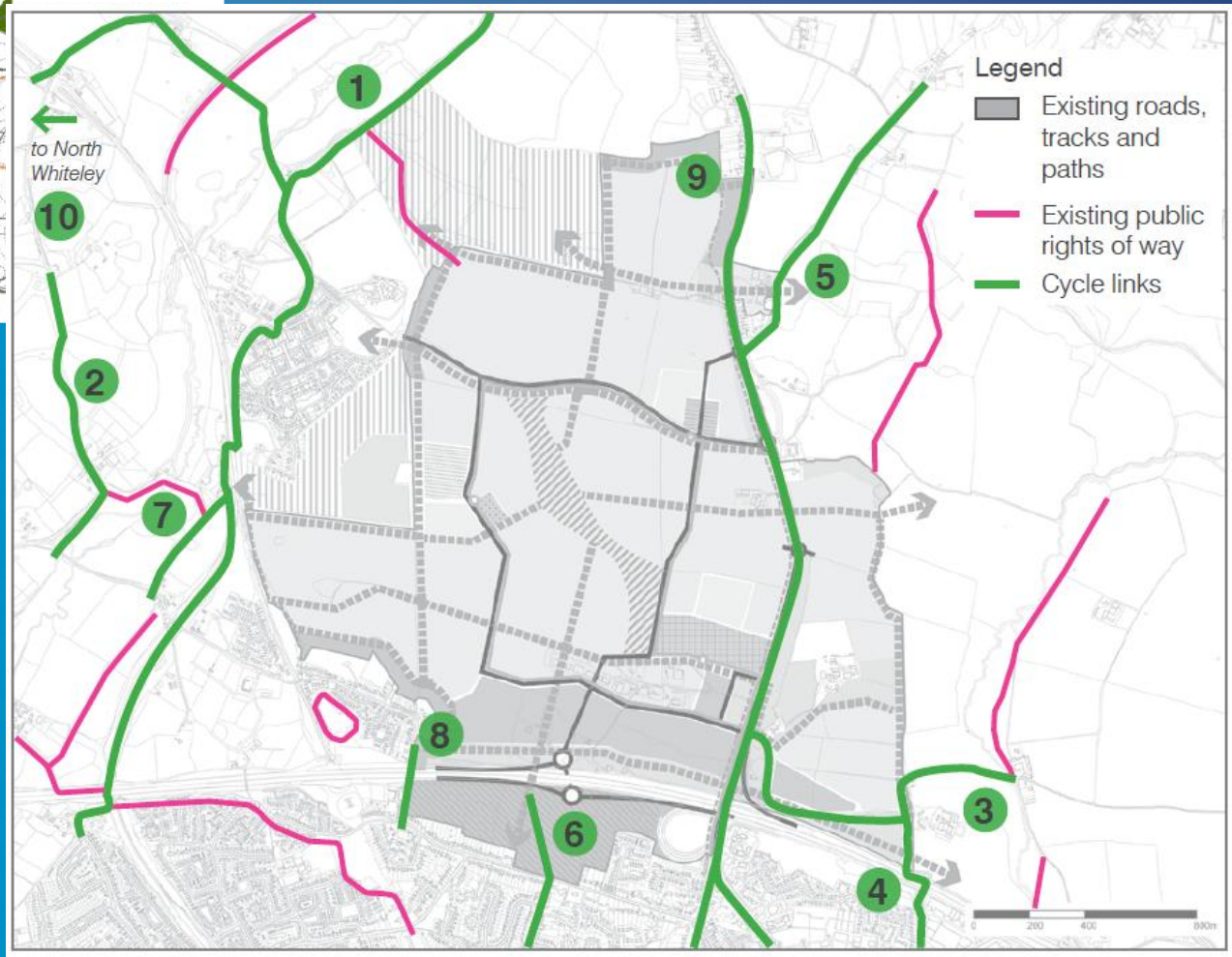
# Welborne Plan

- Policy WEL 28 Walking and Cycling
  - Pedestrian and cycle routes to Fareham, Wickham, Funtley and Whiteley

# Walking and Cycling

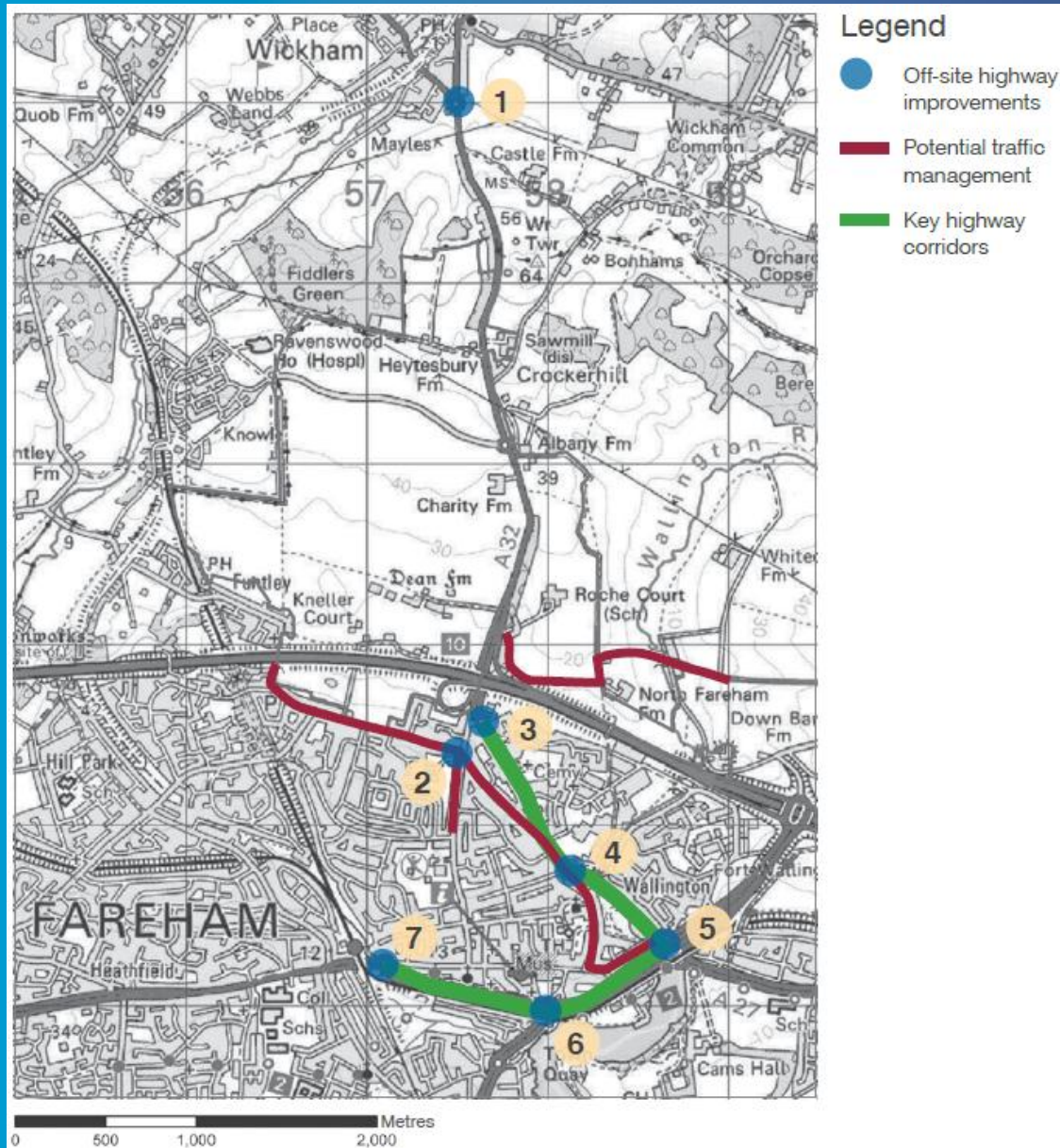


Welborne On Site  
Pedestrian and Cycle  
links showing  
connections to wider  
network including North  
Fareham via existing  
underpass and links  
north to Wickham via  
Mayles Lane



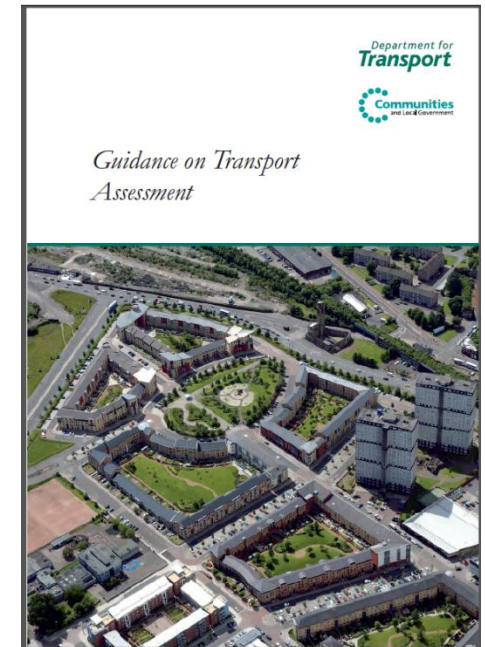


# Off-site Highway Improvements



# Next Steps

- Transport Framework to accompany Developer Proposals
  - Details on layout of the access points and primary road network, including the BRT route and the main pedestrian and cycle routes
  - A Public Transport Plan
  - A Framework Travel Plan
- Transport Assessment
  - Encouraging environmental sustainability
  - Managing the existing network
  - Mitigating residual impacts
- Close working between HA, HCC, FBC and Developers





Hampshire  
County Council



# Managing Local Impacts



- Legend**
- Off-site highway improvements
  - Potential traffic management
  - Key highway corridors

This map is reproduced from Ordnance Survey material with the permission of Ordnance Survey on behalf of the Controller of Her Majesty's Stationary Office © Crown Copyright. Unauthorised reproduction infringes Crown Copyright and may lead to prosecution or civil proceedings. Licence 100019110, 2012

Off-site highway improvements



**Hampshire**  
County Council



# Traffic Management Measures





# Traffic Management Measures





# Traffic Management Measures



# Traffic Management Measures

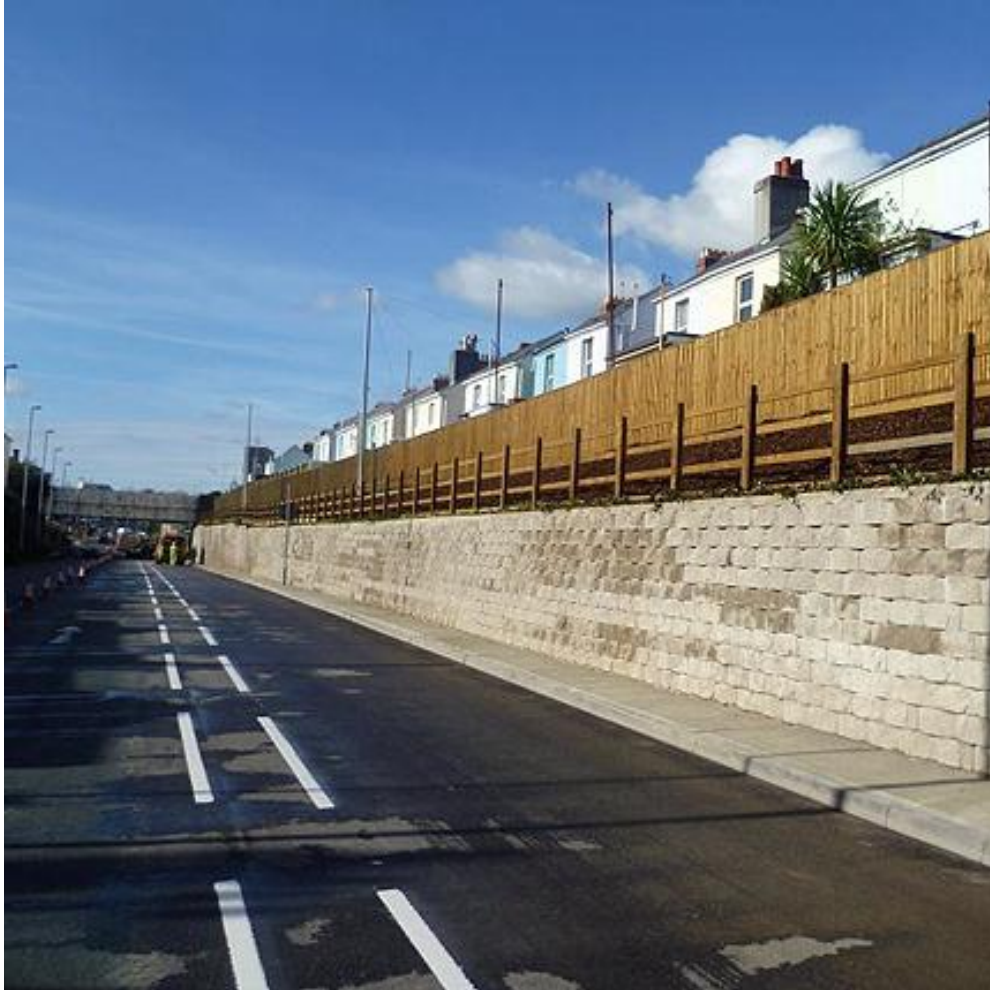




# Capacity Improvements



# Capacity Improvement



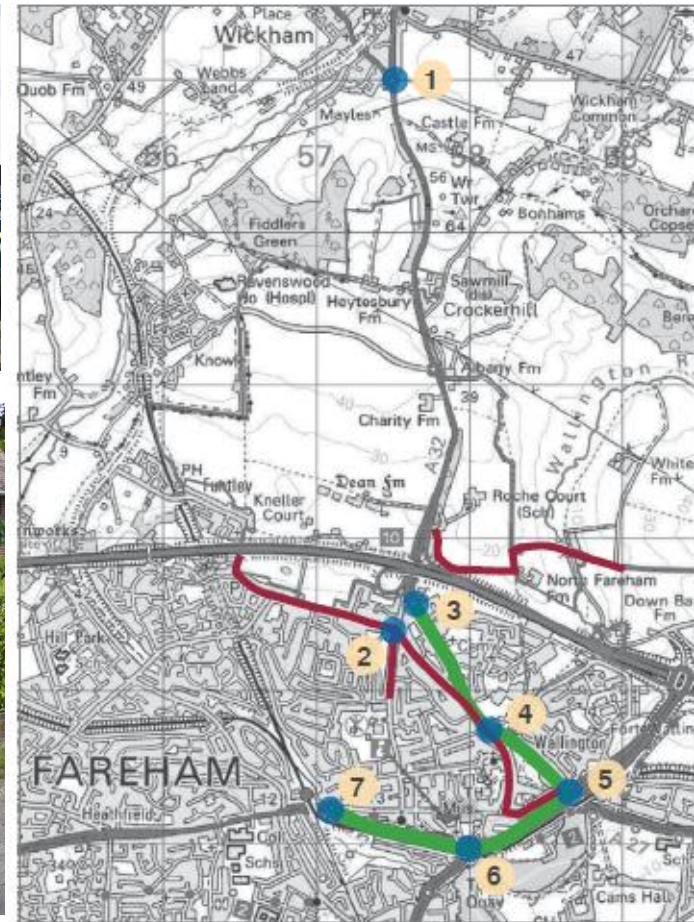


# Capacity Improvement





# Managing Local Impacts - Workshop



0 500 1,000 2,000 Metres

This map is reproduced from Ordnance Survey material with the permission of Ordnance Survey on behalf of the Controller of Her Majesty's Stationary Office © Crown Copyright. Unauthorised reproduction infringes Crown Copyright and may lead to prosecution or civil proceedings. Licence 100019110, 2012

Off-site highway improvements