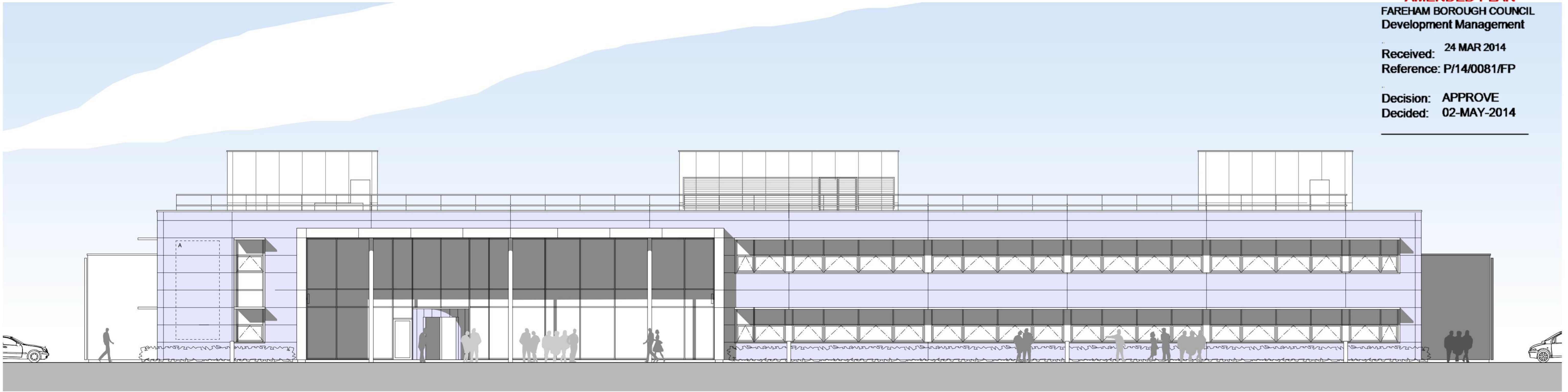


AMENDED PLAN
FAREHAM BOROUGH COUNCIL
Development Management

Received: 24 MAR 2014
Reference: P/14/0081/FP

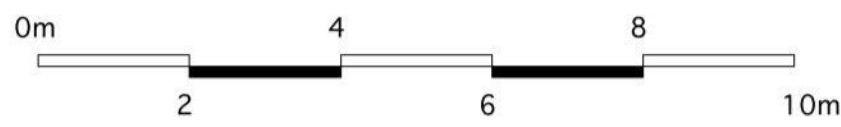
Decision: APPROVE
Decided: 02-MAY-2014



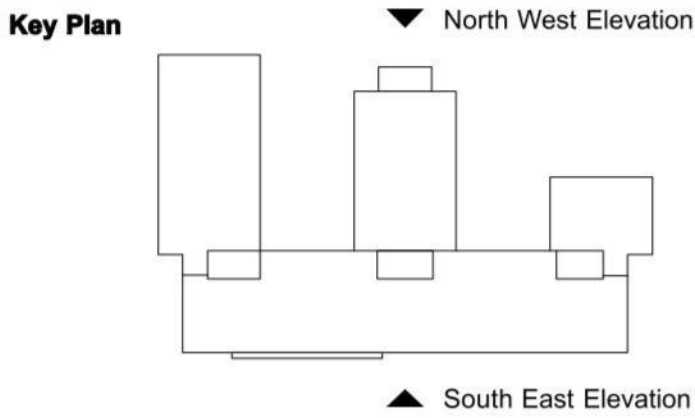
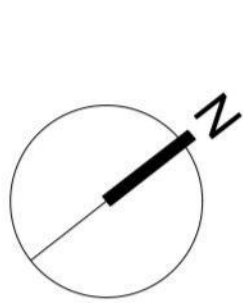
South East Elevation



North West Elevation



rev	date	description	drw	chkd
A	21/03/14	Plant enclosure expanded, Louvres shown, North core extended & roof access moved	MD	NJC



External Materials:

Curtain Walling: *Polyester powder coated aluminium double-glazed system incorporating opening lights*
Cladding Generally: *Metal composite flat panels*
External Service Cores: *Flat high pressure laminate panels*
Windows & Doors: *Polyester powder coated aluminium double-glazed systems*
Workshop Roller Shutter Doors: *Glazed sectional overhead doors*
Roof: *High performance PVC polymeric flat roofing system*
Bins/recycling Area: *Flat high pressure laminate panels to enclosures with matching gates*

Potential signage zone

PLANNING APPLICATION DRAWING

Perkins | Ogden Architects

Construct House Winchester Road Alresford SO24 9EZ
Tel (01962) 735155 Fax (01962) 734305

SHEET CONTENTS				
Fareham Borough Council, Innovation Centre, Solent Enterprise Zone, Daedalus, Lee-On-Solent Proposed South East and North West Elevations				
SCALE 1:100 @ A1 1:200 @ A3	CREATED 01/14	DRAWN POA	DRAWING NO. 5258/PL/1.007	REVISION A