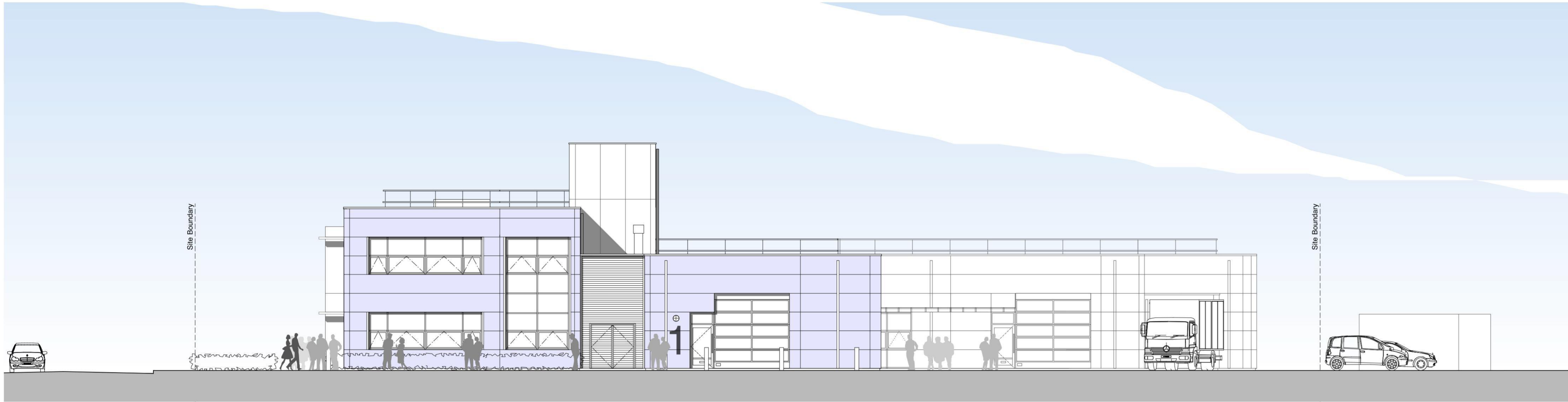




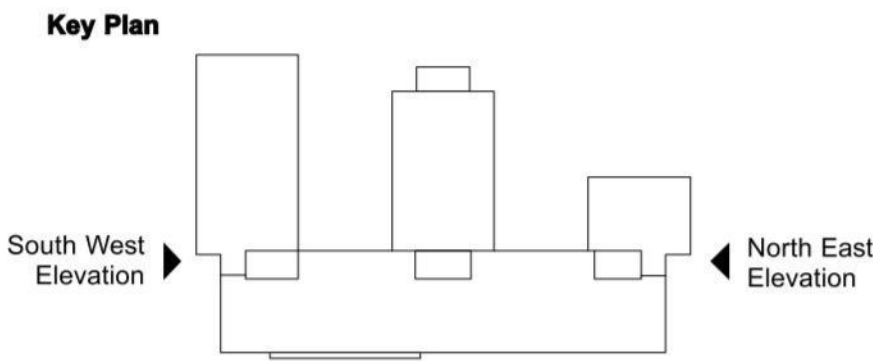
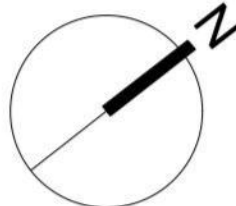
South West Elevation



North East Elevation



rev	date	description	drw	chkd
A	21/03/14	Louvre doors and brise soleil removed	MD	NUC



- External Materials:**
- Curtain Walling: Polyester powder coated aluminium double-glazed system incorporating opening lights
  - Cladding Generally: Metal composite flat panels
  - External Service Cores: Flat high pressure laminate panels
  - Windows & Doors: Polyester powder coated aluminium double-glazed systems
  - Workshop Roller Shutter Doors: Glazed sectional overhead doors
  - Roof: High performance PVC polymeric flat roofing system
  - Bins/recycling Area: Flat high pressure laminate panels to enclosures with matching gates

PLANNING APPLICATION DRAWING

Perkins | Ogden Architects

Construct House Winchester Road Alresford SO24 9EZ  
Tel (01962) 735155 Fax (01962) 734305

SHEET CONTENTS

Fareham Borough Council, Innovation Centre, Solent Enterprise Zone, Daedalus, Lee-On-Solent  
Proposed South West and North Eastt Elevations

SCALE

1:100 @ A1  
1:200 @ A3

CREATED

01/14

DRAWN

POA

DRAWING NO.

5258/PL/1.008

REVISION

A