

AMENDED PLAN

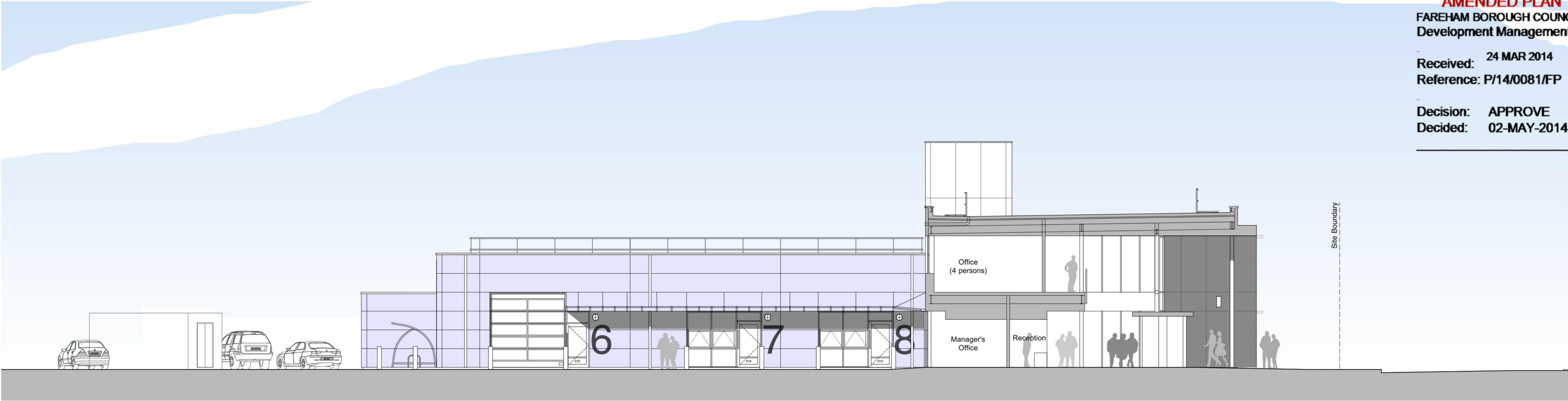
FAREHAM BOROUGH COUNCIL
Development Management

Received: 24 MAR 2014

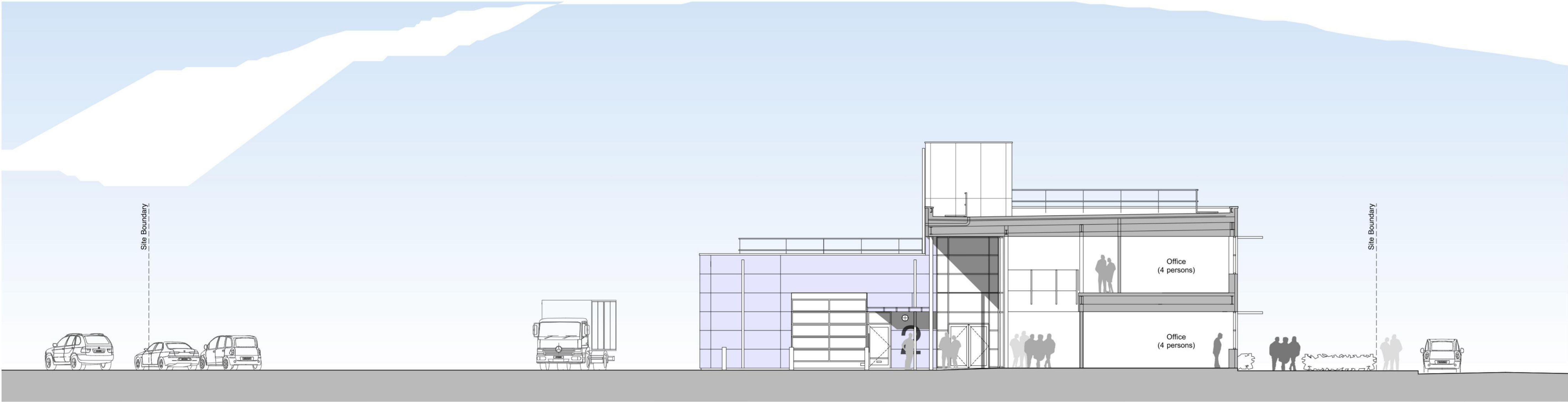
Reference: P/14/0081/FP

Decision: APPROVE

Decided: 02-MAY-2014



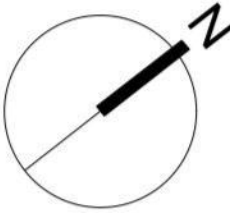
Section A-A



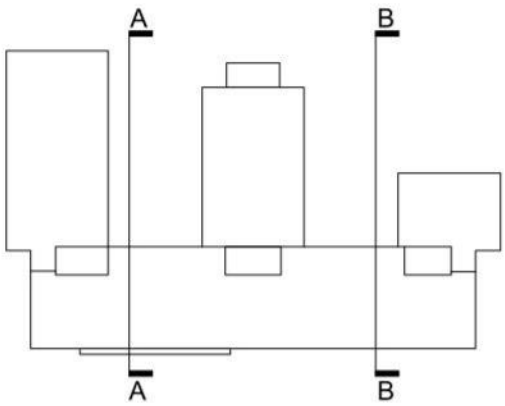
Section B-B



rev	date	description	drw	chkd
A	21/03/14	Reveals to rear re-entrant moved to gridline, workshop door adjusted	MD	NJC



Key Plan



External Materials:

Curtain Walling: Polyester powder coated aluminium double-glazed system incorporating opening lights
Cladding Generally: Metal composite flat panels
External Service Cores: Flat high pressure laminate panels
Windows & Doors: Polyester powder coated aluminium double-glazed systems
Workshop Roller Shutter Doors: Glazed sectional overhead doors
Roof: High performance PVC polymeric flat roofing system
Bins/recycling Area: Flat high pressure laminate panels to enclosures with matching gates

PLANNING APPLICATION DRAWING

Perkins | Ogden Architects

Construct House Winchester Road Alresford SO24 9EZ
Tel (01962) 735155 Fax (01962) 734305

SHEET CONTENTS
Fareham Borough Council, Innovation Centre, Solent Enterprise Zone, Daedalus, Lee-On-Solent
Proposed Sections Sheet 1

SCALE	CREATED	DRAWN	DRAWING NO.	REVISION
1:100 @ A1 1:200 @ A3	01/14	POA	5258/PL/1.009	A