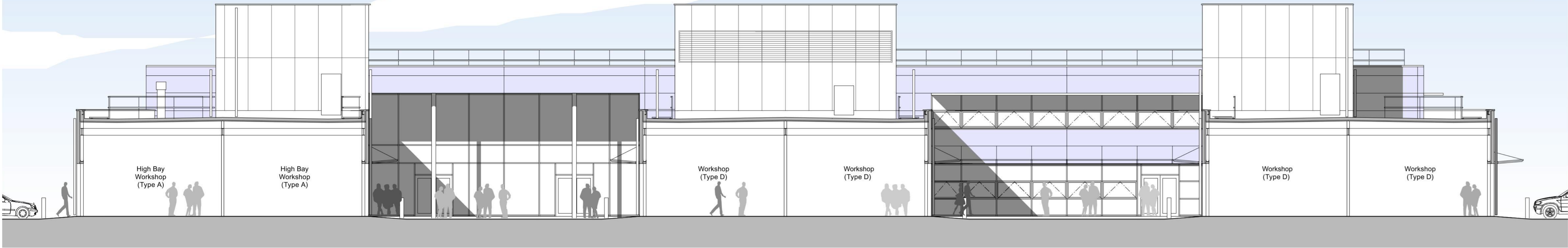
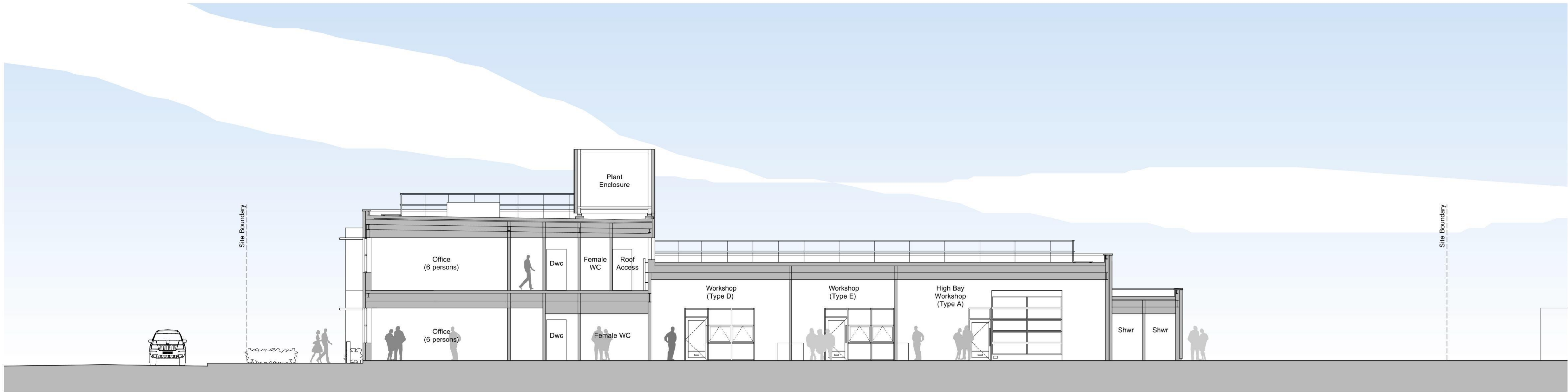


Received: 24 MAR 2014
Reference: P/14/0081/FP

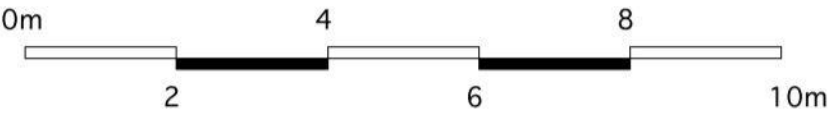
Decision: APPROVE
Decided: 02-MAY-2014



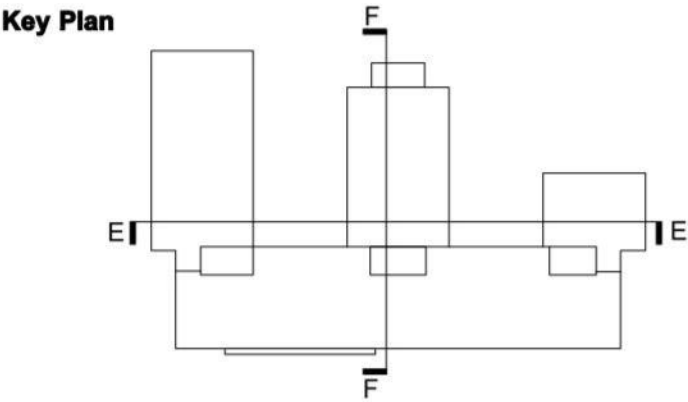
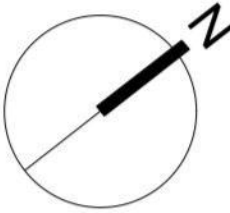
Section E-E



Section F-F



rev	date	description	drw	chkd
P1	21/03/14	Reveals to rear re-entrant moved to grid, Rooftop plant enclosure expanded, Louvres shown.	MD	NJC



External Materials:

Curtain Walling: Polyester powder coated aluminium double-glazed system incorporating opening lights
Cladding Generally: Metal composite flat panels
External Service Cores: Flat high pressure laminate panels
Windows & Doors: Polyester powder coated aluminium double-glazed systems
Workshop Roller Shutter Doors: Glazed sectional overhead doors
Roof: High performance PVC polymeric flat roofing system
Bins/recycling Area: Flat high pressure laminate panels to enclosures with matching gates

PLANNING APPLICATION DRAWING

Perkins | Ogden Architects
Construct House Winchester Road Alresford SO24 9EZ
Tel (01962) 735155 Fax (01962) 734305

SHEET CONTENTS
Fareham Borough Council, Innovation Centre, Solent Enterprise Zone, Daedalus, Lee-On-Solent
Proposed Sections Sheet 3

SCALE	CREATED	DRAWN	DRAWING NO.	REVISION
1:100 @ A1 1:200 @ A3	01/14	POA	5258/PL/1.011	A